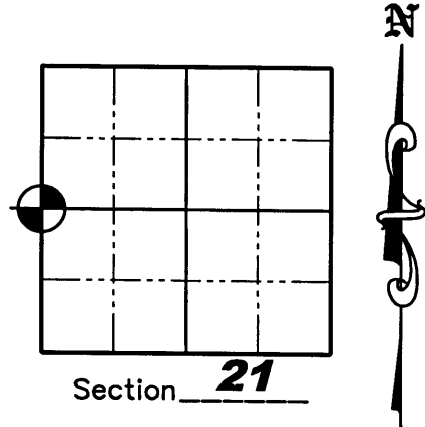


U.S. PUBLIC LAND SURVEY MONUMENT RECORD

NOTE: This form is intended and designed to fulfill all requirements of Wisconsin Administrative Code, Chapter A-E 7 .08 U.S. Public Land Survey Monument Record (3)(a)(b)(c)(d)(e)(f)(g)(h)(i). An additional sheet may be added if necessary to conform with said requirements.

(a) Corner location: Township 37 North
 Range 10 East/West
 Town STELLA
 County ONEIDA

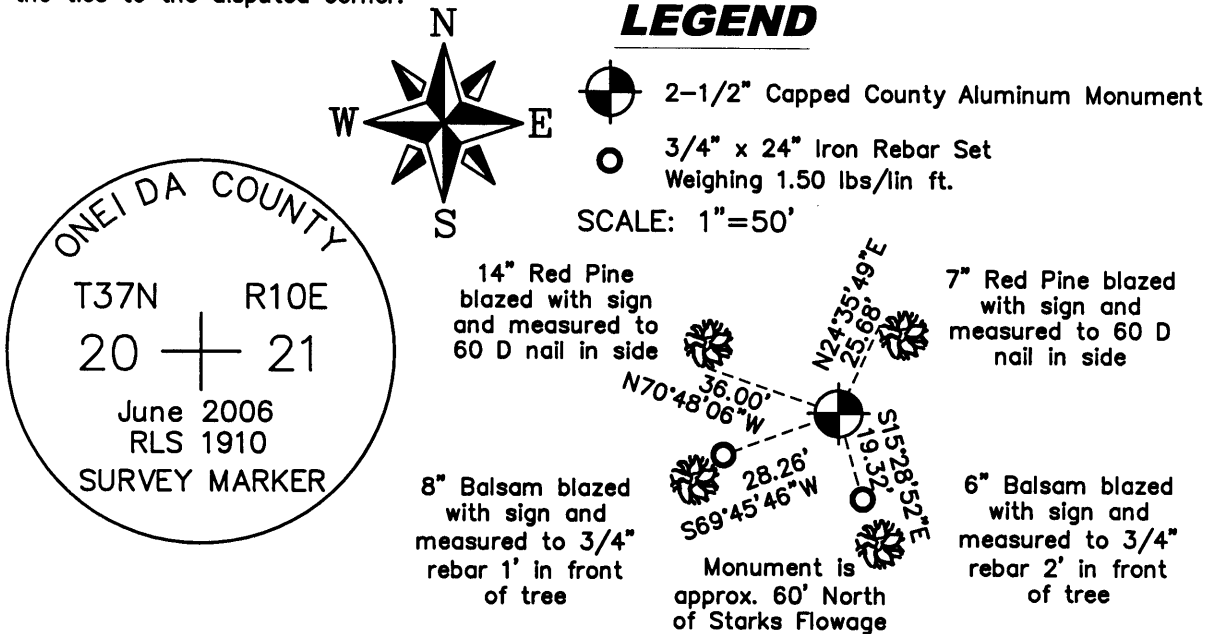


(b)(f)(g)(h) Description of monument found at this corner and if it was accepted, state all evidence (material, testimonial, occupation, plats, records, other monuments) used as a basis for accepting. If not accepted or if nothing was found, state evidence used as a basis for establishing location. If reestablished through lost corner proportionate methods, indicate all monuments, distances and directions used to establish. Indicate type of monument found or set and sign post.

1863— Corner established by W. E. Daugherty. 40.00 chs. Set post, W. Pine 8", N58W, 21 lks. W. Pine 10", S42E, 23lks.

JUNE 2006— Matthew E. Hogleund S-1910. No evidence found. Set 2-1/2" Aluminum Capped County Monument by single-proportionate measurement S00°35'29"E, 2662.07' from a found Aluminum Monument at the Northwest Section Corner and N00°35'29"W, 2662.07' from the Southwest Section Corner position from ties, see Plat of Survey dated 8/01/2006 for details. Stamped monument cap as shown below. White tee post was set 1' North of Monument and reference ties were set as shown below.

(c)(d)(e) Plan view of corner with ties to at least 4 witness monuments. If in disagreement with previously established corner, show the distances between the two corners and also indicate the ties to the disputed corner.



(i) I, Matthew E. Hogleund, certify that the corner location on this record was determined by me under my direction and control and that this U.S. Public Land Survey Monument is correct and complete to the best of my knowledge and belief.

Signature Matthew E. Hogleund Date 8/4/06

REGISTER OF DEEDS OFFICE
 ONEIDA COUNTY, WIS.

FILED

APR 12 2007

At _____ O'Clock _____ M
THOMAS H. LEIGHTON
 REGISTER OF DEEDS