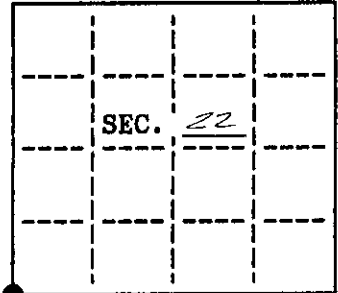


**U.S. PUBLIC LAND SURVEY MONUMENT RECORD**

Note: This form is intended and designed to fulfill all requirements of Wisconsin Administrative Code, Chapter A-E 7.08 U.S. Public Land Survey Monument Record (3)(a)(b)(c)(d)(e)(f)(g)(h)(i). An additional sheet may be added if necessary to conform with said requirements.

(a) CORNER LOCATION: State Plane Coordinates  
SW corner of Sec. 22 X \_\_\_\_\_  
 Township 37 North Y \_\_\_\_\_  
 Range 10 East Datum Base \_\_\_\_\_  
 Town/City STELLA County of ONEIDA



(b) HISTORY OF ORIGINAL CORNER ESTABLISHMENT

Original Surveyor: W M DAUGHERTY  
 Date of Survey: Commenced AUG, 1863  
 Completed AUG, 1863

Original B.T.'S

8" BLACK PINE, S65°W, 55 1/2 (36.30)  
 8" BLACK PINE, N72°E, 9 1/2 (5.94')

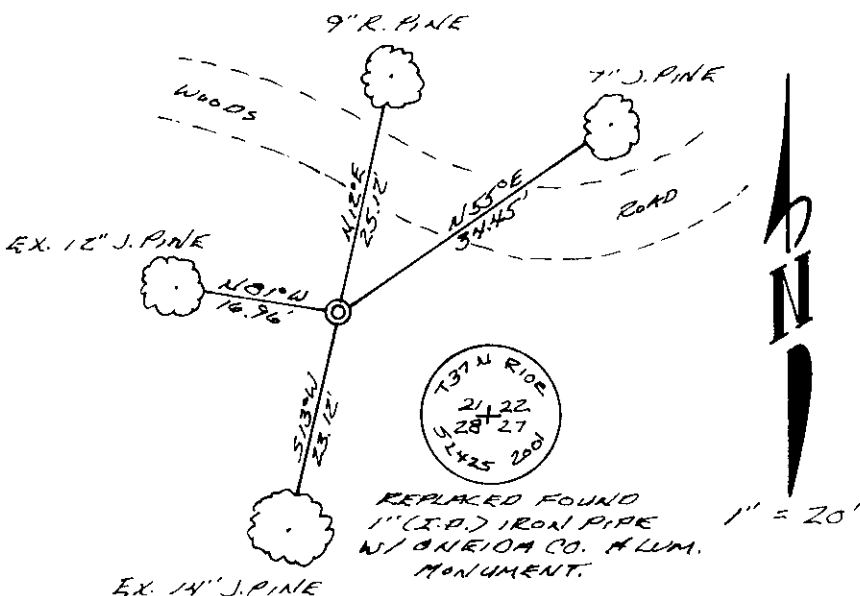
(b)(f)(g)(h) Description of monument found at this corner and if it was accepted, state all evidence (material, testimonial, occupational, plats, records, other monuments) used as a basis for accepting. If not accepted or if nothing was found, state evidence used as basis for establishing location. If reestablished through lost corner proportionate methods, indicate all monuments, distances and directions used to establish. Indicate type of monument and sign post found or set.

AUG, 1863 W M E. DAUGHERTY SET POST.

FEB, 1973 NEAL KIRBY SHOWS CORNER AND TWO B.T.'S - 14" J. PINE, S13°W, 22.50'; 11" J. PINE, S84°W, 14.75'

OCT, 2001 I FOUND A 1" (I.D.) IRON PIPE AND KIRBY'S B.T.'S I ACCEPT. THIS AS THE SECTION CORNER AND WITNESSED IT AS SHOWN BELOW.

(c)(d)(e) Plan view of corner with ties to at least 4 witness monuments. If in disagreement with previously established corner, show the distances between the two corners and also indicate the ties to the disputed.

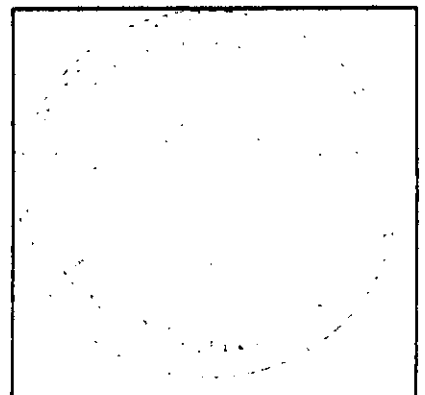


MEASURED TO 60d NAILS SET IN SIDES OF EACH B.T. SET CARBONITE ± 1' SOUTH.

(i) I, KEITH A. ZARM RLS-2425 hereby certify that the corner location on this record was determined by me or under my direction and control and that this U.S. Public Land Survey Monument Record is correct and complete to the best of my knowledge and belief.

Keith A. Zarm  
 Signature

26 Nov 01  
 Date



INDEX NO. R 13

3710210000