

At _____ o'clock _____ M
THOMAS J. LEIGHTON
REGISTER OF DEEDS
Recorders Data

This form is intended to fulfill the requirements of Chapter A-E7.06 (3)(a) thru (i) U.S. Public Land Survey Monument Location Record, Wisconsin Administrative Code. Use the reverse side of form for continuation.

U.S. PUBLIC LAND SURVEY MONUMENT LOCATION RECORD

USPLS CORNER: WEST 1/4 SECTION: 22 TOWNSHIP: 37 NORTH RANGE: 10 EAST
 NAME OF WATERWAY FOR M.C. CORNER: N/A SECTION LINE: N/A
 (CITY)(VILLAGE)(TOWN) OF: STELLA COUNTY OF: ONEIDA

Description of monument found or placed and all other evidence used as the basis for monument location; including monuments and measurements required if the corner location was reestablished by lost corner proportionate methods. Also indicate name of the original surveyor, original survey date and the corner monument, bearing trees, witness or other reference monuments established, including measured bearing and distance ties, from available survey records.

Found and accepted location of a deteriorating 6" sq. concrete monument with original tablet stamped by Hall in 1934 wired loosely to top, as shown to me by adjacent owner Fred Oettinger, who opened gated access woods road south to this corner location from Spring Drive. I carefully removed the monument and replaced it with a 2" dia. by 30" long aluminum pipe monument with black poly flanged pedestal base and stamped Oneida County cap 10" above grade. I left old monument tipped flat on grade to the West and piled rocks found nearby as a cairn around new monument at grade; corner falls about 12' northerly of northerly edge of woods roadway and clearing bearing N65°W +/-.

In August 1863, William E. Daugherty/GLO set a wood post as original corner and noted OBTs: a 10" Pw S02°E 20 links and a 10" Pw N18°W 27 links; all now obliterated.

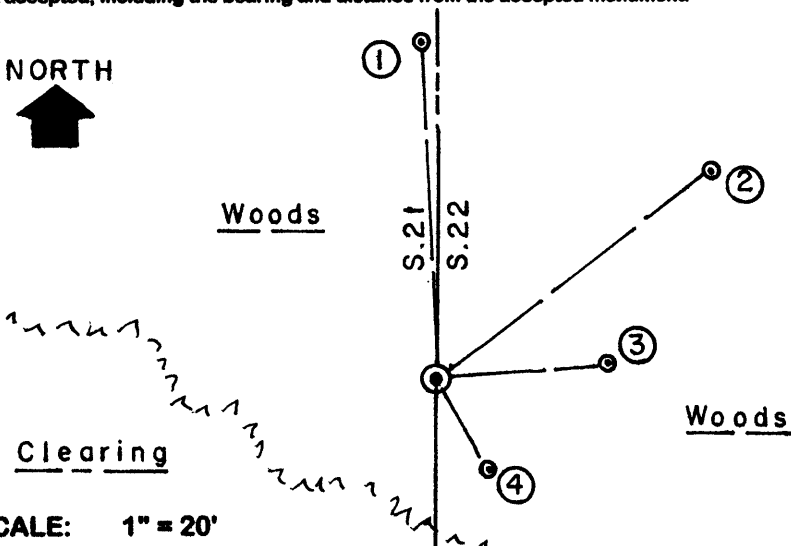
In September 1899, B.F. Dorr notes a new wood post at corner and a 13" Pr BT S45.5°W 31 links per Page 66 of Old Field Book 4A in Oneida County survey records; all now obliterated.

In November 1934, Hall noted he had found B.F. Dorr's corner post, SW BT and GLO SW(SE?) OBT with iron marks and replaced the wood post with a concrete monument per his Book 1 Field Notes Page 332 in Oneida County survey records; I did not find any evidence of record BTs.

This recovery completed May 20, 2004 and witnessed by adjoining owner Fred Oettinger.

Plan view map of monument location with bearing and distance ties to a minimum of four(4) described witness or reference monuments of concrete, natural stone, iron, live bearing trees or equivalent material. If applicable, also show a minimum of two(2) bearing and distance ties to any other monument found and not accepted; including the bearing and distance from the accepted monument.

NORTH



WITNESS MONUMENT TIES:

- ① New twin 6"/12" basal trunk Mr BT N02°W 35.63'.
- ② New 10" Pr BT N52°E 35.81'to PK & washer in left face.
- ③ New 16" Pw BT N84°E 17.72'.
- ④ New 22" Pw BT S30°E 11.10'.

No other suitable BTs nearby.

Standard white poly 'T' marker post set 7" West of corner monument.

SCALE: 1" = 20'

Unless otherwise indicated, all bearing tree ties are to a .25" dia. by 2.5" long PK nail with a 1.25" dia. steel washer driven into unblazed right face and a .25" dia. by 2.5" long PK nail with a 2" dia. steel washer stamped BT is also driven into unblazed face of bearing tree at DBH; the basis for measured bearings is by compass to nearest degree and all tie distances are measured horizontal by steel tape corrected to nearest 1/100th feet at standard temperature of 68° F.

RLS SEAL:

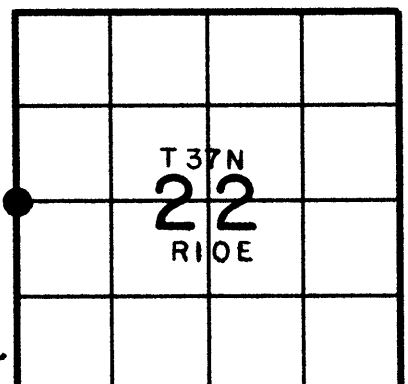


LAND SURVEYOR CERTIFICATE:

I, William C. Rohde, hereby certify that I am duly licensed as a Professional Land Surveyor in the State of Wisconsin; that this USPLS monument location was determined by me and/or under my direct supervision and control; and that this U.S. Public Land Survey Monument Location Record is true and correct to the best of my knowledge and belief.

Signed: *William C. Rohde*
 William C. Rohde RLS 841

Date Signed: September 4, 2004



SECTION LOCATION MAP
 INDEX NO. P 13

3710212000