

CERTIFIED LAND CORNER RESTORATION

State of Wisconsin }
County of Onaيدا } ss.

I Norman Loftus, do hereby certify that on the 30 day of August, 1984, I found evidence of the Southeast corner of Section 22 Township 37 North, Range 10 East, Fourth Principal Meridian, as described hereon; and that from this evidence I established a new monument and accessories as described hereon to perpetuate the original location of this corner:

Description of original monument and accessories and subsequent restorations:

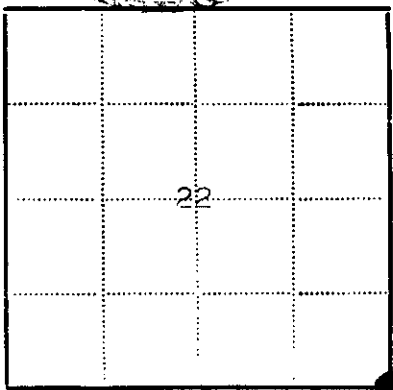
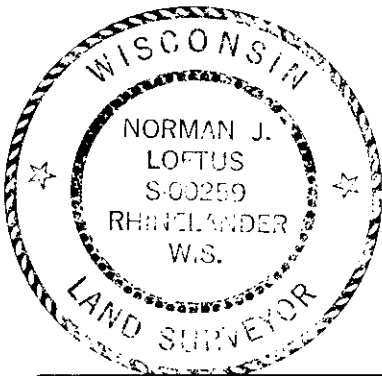
Original corner set by Wm. Daugherty 1863.
Hall replaced corner from evidence of bearing trees.

Description of corner evidence found:

Found an approximate 1" iron pipe top badly beat up and Hall's spruce B.T. ie. Spruce 9", S 85° 20' W, 54.6'. Spruce is now 2 1/2" in diameter. Hall's distance to creek to the North 1.056 chains, pipe was set in West rut of road

Description of monument and accessories I established to perpetuate the location of this corner:

Corner location checks with spruce B.T. and creek
New Witness - Aspen 12", N 50° W, 17.8'
1" iron pipe 4" exposed N 33° E, 40.0'
Corner is 3' from West edge of blacktop and 108' from center of culvert to the North.



● - Corner monument restored
□ -

Resident witnesses Todd Loftus

Dated at Rhineland, Wisconsin, this 15 day of October, 1984.

Signature Norman Loftus Title Registered Land Surveyor
(County Surveyor, Registered Land Surveyor, or other duly authorized official)

Surveyors Registration No. 259

Office of REGISTER OF DEEDS County of Onaيدا

I hereby certify that the within instrument was filed in this office for record on the 3rd day of December, 1984, and was filed in Book No. Page No. of County Records.

Signature Doris Verage Kuehn Title REGISTER OF DEEDS

Township, Range, Section, Index No., Page No.

U.S. PUBLIC LAND SURVEY MONUMENT RECORD

NOTE: This form is intended and designed to fulfill all requirements of Wisconsin Administrative Code, Chapter A-E 7 .08 U.S. Public Land Survey Monument Record (3)(a)(b)(c)(d)(e)(f)(g)(h)(i). An additional sheet may be added if necessary to conform with said requirements.

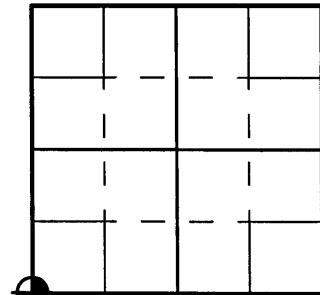
(a) Corner location: Township 37 North

Range 10 East

Town of Stella

County Oneida

Project # 744



Section 23



(b)(f)(g)(h) Description of monument found at this corner and if it was accepted, state all evidence (material, testimonial, occupation, plats, records, other monuments) used as a basis for accepting. If not accepted or if nothing was found, state evidence used as a basis for establishing location. If reestablished through lost corner proportionate methods, indicate all monuments, distances and directions used to establish. Indicate type of monument found or set and sign post.

1863 - William Daugherty set Original Corner

July 1929 - Hall found town road built North-South over this corner and a post on West side of fill. Stump of Original East Tam. is O.K., marks plain - other stump is in bad shape. He set corner 42 Lks. S89°W (Var 2°36'E) from East Stump; Corner falls in West rut of road. He drove a 1-1/4" well point at corner; Creek measures North 1.60 Chains (105.6') (Recorded as 1.10 Chains). Set new reference monuments: Spruce 9" S85°20'W 54.6'; Iron bolt in South sill of bridge N01°E 107.9'; Road North Bears N5-1/4°E

December 1984 - Norman J. Loftus found an approximate 1" iron pipe with the top badly beat up and Halls Spruce bearing tree, now a 24" diameter. He says corner checks with Spruce B.T. and creek call. He set new witness monuments: Aspen 12" N50°W, 17.8'; 1" iron pipe 4" exposed N88°E, 40.0'. The corner is 3' from West edge of blacktop and 109' from center of culvert to the North.

September 19, 2006 - Matthew E. Hoglund found and accepted an approximate 1" iron pipe with the top half of the pipe badly beat up 7" below the blacktop road and Halls spruce bearing tree, know a 26" diameter. Corner Checked with Halls spruce bearing tree so we drove a 60 D nail through the center of the pipe and set new reference monuments as shown below.

(c)(d)(e) Plan view of corner with ties to at least 4 witness monuments. If in disagreement with previously established corner, show the distances between the two corners and also indicate the ties to the disputed corner.

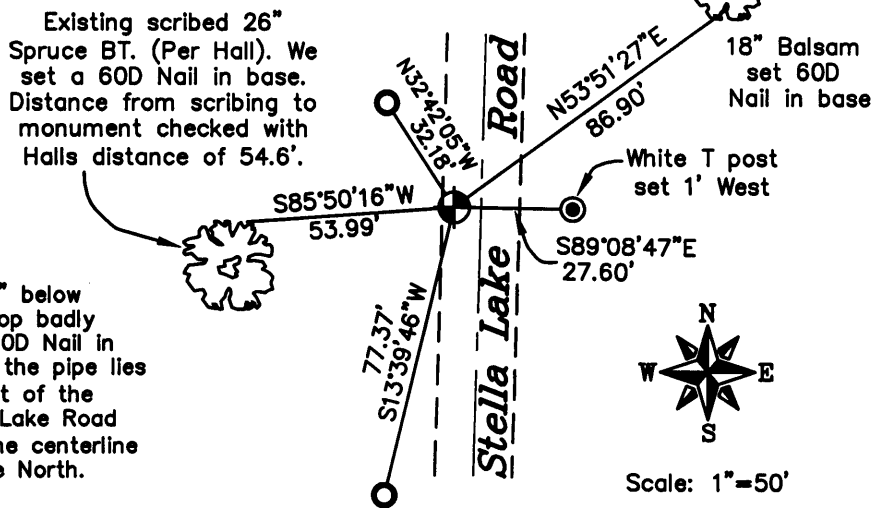
Legend

○ 3/4" x 24" capped iron rebar set

⊙ 1" Iron pipe found

⊕ 1" iron pipe found 7" below blacktop road with top badly beat up. We set a 60D Nail in center of pipe. Also the pipe lies approximately 3' East of the West edge of Stella Lake Road and 112' South of the centerline of the culvert to the North.

Existing scribed 26" Spruce BT. (Per Hall). We set a 60D Nail in base. Distance from scribing to monument checked with Halls distance of 54.6'.

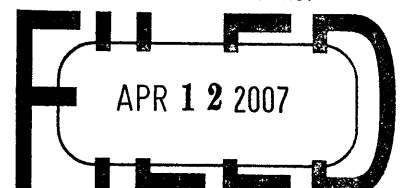


(i) I, Matthew E. Hoglund, certify that the corner location on this record was determined by me under my direction and control and that this U.S. Public Land Survey Monument is correct and complete to the best of my knowledge and belief.

Signature Matthew E. Hoglund Date 11/16/06

WISCONSIN
MATTHEW E. HOGLUND
S-1910
TOMAHAWK
WI
LAND SURVEYOR

REGISTER OF DEEDS OFFICE
ONEIDA COUNTY, WIS.



At _____ O'Clock _____ M
THOMAS H. LEIGHTON
REGISTER OF DEEDS
3710220000

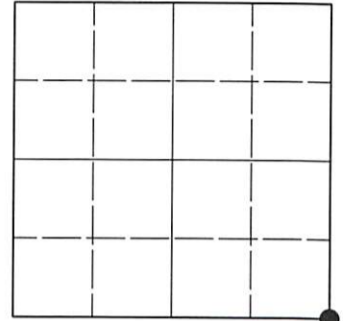
R-17

U.S. PUBLIC LAND SURVEY MONUMENT RECORD

Note: This form is intended and designed to fulfill all requirements of Wisconsin Administrative Code, Chapter A-E 7.08 U.S. Public Land Survey Monument Record (3)(a-i).

(a) CORNER LOCATION
 Cor. of Secs. 22, 23, 26 & 27
 Township 37 North
 Range 10 East of the 4th P.M.
 Town of Stella
 County of Oneida

WISCRS - Oneida County
 N: 176,582.51 USft
 E: 312,381.44 USft
 Datum: NAD 83(2011) ep. 2010.00
 GNSS Method: RTN - Offset
 GNSS Control: WISCORS VRS



Sec. 22, T. 37 N., R. 10 E.

(b)(f)(g)(h) Description of monument found at this corner and if it was accepted, state all evidence (material, testimonial, occupational, plats, records, other monuments) used as a basis for accepting. If not accepted or if nothing was found, state evidence used as basis for establishing location. If re-established through lost corner proportionate methods, indicate all monuments, distances and directions used to establish. Indicate type of monument and sign post found or set.

This record is a perpetuation of the following land corner document(s):

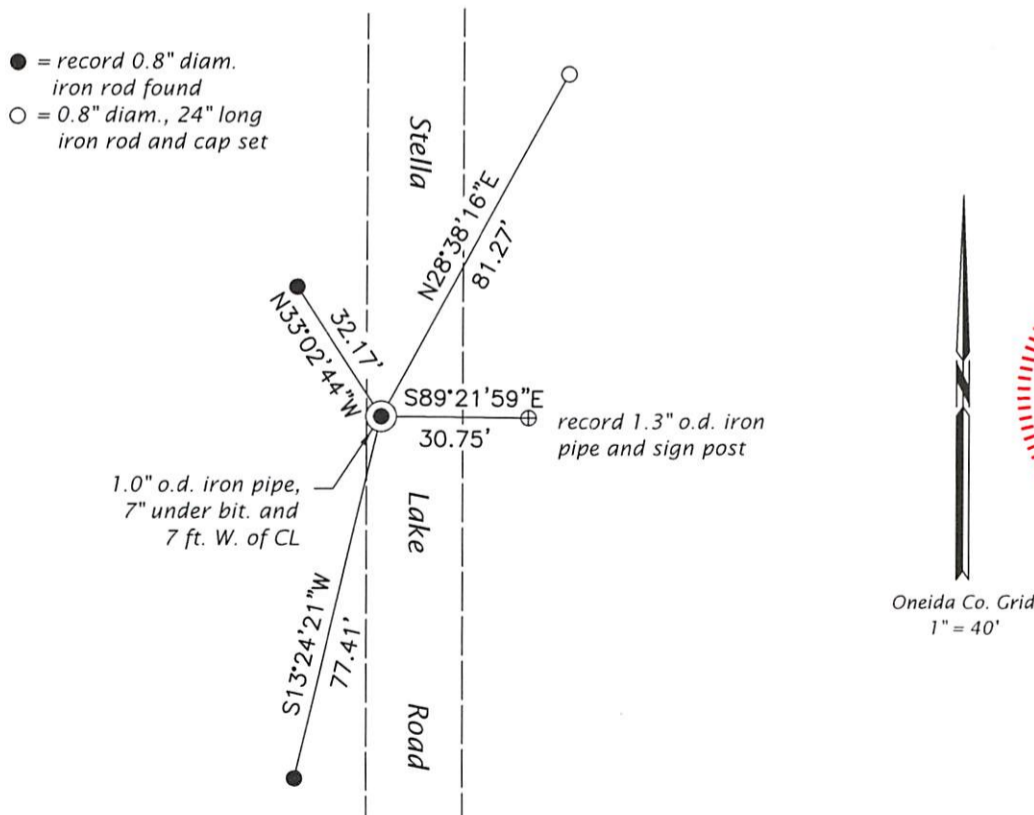
November 16, 2006: USPLS Monument Record by Matthew E. Hoglund, filed in Oneida County

A complete history of the corner can be found on the previous land corner document(s). I accept the record activity as a true and faithful perpetuation or reestablishment of the original corner location and further perpetuate it as described below.

July 14, 2021: I found and accepted the record monument, a 60d spike in a beat up 1.0" o.d. iron pipe 7" beneath the pavement surface and 7 ft. West of centerline. As the corner is in the road, I set an additional reference monument rather than measuring the record bearing trees. I found or established accessories as shown below.

The coordinate value shown has been verified by at least one of the following methods: 1) comparison to a previously GNSS determined published value; 2) the value is the average of two or more GNSS observations at a markedly different time; 3) one or more distances were measured back to the GNSS observed corner from temporary GNSS observed offset locations.

(c)(d)(e) Plan view of corner with ties to at least 4 witness monuments. If in disagreement with previously established corner, show the distances between the two corners and also indicate the ties to the disputed.

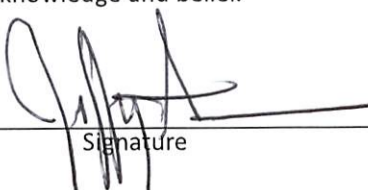


REGISTER OF DEEDS OFFICE
 ONEIDA COUNTY
 FILED

SEP 27 2021

KYLE J. FRANSON
 REGISTER OF DEEDS

(i) I, Jeffrey W. Austin, Professional Land Surveyor No. S-1885, hereby certify that the corner location on this record was determined by me or under my direction and control and that this U.S. Public Land Survey Monument Record is correct and complete to the best of my knowledge and belief.


SEP-5, 2021

 Signature Date