

CERTIFIED LAND CORNER RESTORATION

State of Wisconsin }
County of Oneida } ss.

I Norman Loftus, do hereby certify that on the 30 day of August, 1984, I found evidence of the East 1/4 corner of Section 22 Township 37 North, Range 10 East, Fourth Principal Meridian, as described hereon; and that from this evidence I established a new monument and accessories as described hereon to perpetuate the original location of this corner:

Description of original monument and accessories and subsequent restorations:
None could be found.

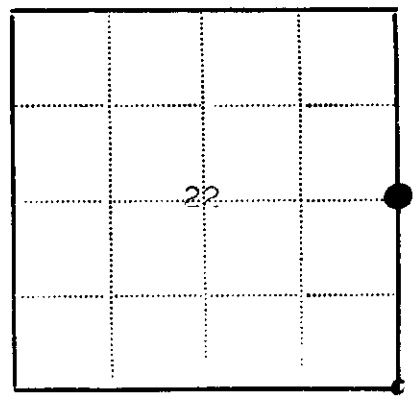
Description of corner evidence found:

Hall ran from Northeast Corner to Southeast corner but didn't set East 1/4 corner. No other evidence found

Description of monument and accessories I established to perpetuate the location of this corner:

Ran line between Northeast and Southeast Corner. Set corner at proportioned distance of 2616.445'. Set a 3" O.D. iron pipe 7" exposed. Could not drive deeper due to rock.

Witness to corner: Jackpine 15", 182° W, 39.10'
Jackpine 15", 190° E, 52.35'
1 1/2" x 2 1/2" iron pipe N 41° W, 7.00'
Drove spike at root collar of trees
distances measured to spike.



● - Corner monument restored
□ -

Resident witnesses Todd Loftus

Dated at Rhinelander Wisconsin, this 15 day of October 1984.

Signature Norman Loftus Title Registered Land Surveyor
(County Surveyor, Registered Land Surveyor, or other duly authorized official)

Surveyors Registration No. 259

Office of REGISTER OF DEEDS County of Oneida

I hereby certify that the within instrument was filed in this office for record on the 3rd day of December 1984, and was filed in Book No. Page No. of County Records.

Signature Doris Verage Kucha Title REGISTER OF DEEDS

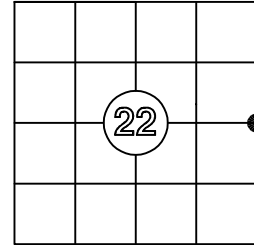
Township, Range, Section, Index No., Page No.

US PUBLIC LAND SURVEY MONUMENT RECORD

Per Wis. Admin. Code § A-E 7.08, a U.S. public land survey monument record shall be prepared and filed with the county survey records as part of any land survey within 60 days of setting or accepting the corner, which includes or requires the perpetuation, restoration, or use of a U.S. public land survey corner and when any of the situations in Wis. Admin. Code § A-E 7.08(1)(a), (b) or (c) arise.

3(a) Corner Identification: Observed Coordinates:
 Found 3" iron pipe N: 179198.69
 East 1/4 corner E: 312430.23
 Section 22 Datum: NAD83(2011)
 Township 37 North GNSS Control: WISCRS
 Range 10 East NETWORK
 4th Principal Meridian GNSS Method: RTK-Direct
 Town of Stella Verification Method: 3
 Oneida Co., WI

CORNER ID:
3710222000



Establishment of Original Corner

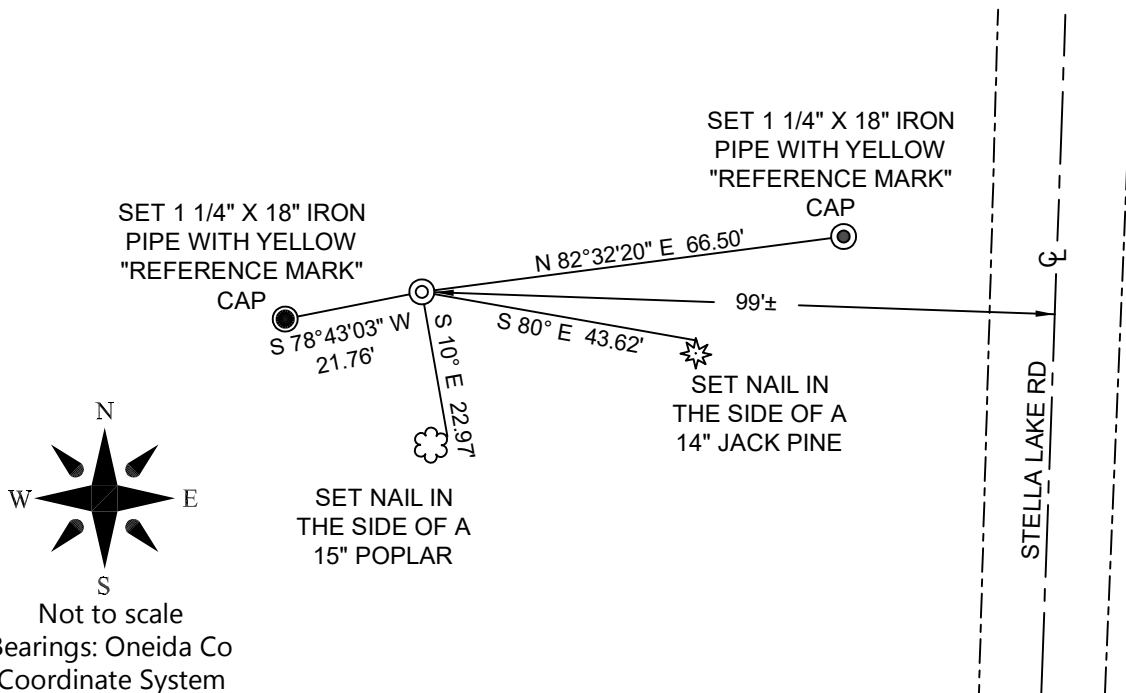
Corner Set: Wood Post
 Original Surveyor: Wm. Daugherty
 Date of Survey: June, 1863
 Spruce 8", S 77° E, 33 lks
 Spruce 7", N 68° W, 41 lks

The coordinate value has been verified by at least one of the following methods:

1. Comparison to a previously determined GNSS determined published value;
2. The value is the average of two or more GNSS observations at markedly different times;
3. One or more distances were measured to the corner from offset GNSS observed locations, set and observed per No. 2 methods.

3(b)(c)(d)(f)(g)(h)

- 8/30/1984 - Norm Loftus, S-259, set a 3" outside diameter iron pipe at the proportioned distance between the northeast corner and the south east corner of Section 22-37-10. He made new witnesses and filed a new Certified Land Corner Restoration form.
- 6/22/1995 - James Rein, S-1234, finds a 2" iron pipe.
- 1/20/1998 - James Rein, S-1234, finds a 2" iron pipe.
- 7/29/1999 - Russ Brown, S-2148, finds a 2" iron pipe.
- 2/23/2000 - Russ Brown, S-2148, finds a 2" iron pipe.
- 10/1/2001 - Keith Zarm, S-2425, finds a 2" iron pipe.
- 5/1/2003 - Russ Brown, S-2148, finds a 2" iron pipe.
- 5/9/2012 - Jon Badow, S-2731, finds a 2" iron pipe.
- 9/1/2025 - I, Anthony Jones, S-2508, found the 3" outside diameter iron pipe set by Norm Loftus. I did not find any of his witnesses. I set two offset nails in Stella Lake Road and took two, 180 second RTK observations, with a Carlson NR3 receiver, at markedly different times of the day on each nail. I made two conventional measurements to the iron pipe with a Trimble robotic total station. I set two new intervisible 1 1/4" x 18" iron pipes with yellow "reference mark" caps and nails in two new witness trees, as shown below.



Not to scale
 Bearings: Oneida Co
 Coordinate System

3(i) I, Anthony R. Jones, Wisconsin Professional Land Surveyor No S-2508, hereby certify that the corner location shown on this record was determined by me, and that this U.S. Public Land Survey Monument Record is correct and complete to the best of my knowledge and belief.

