

U.S. PUBLIC LAND SURVEY MONUMENT RECORD

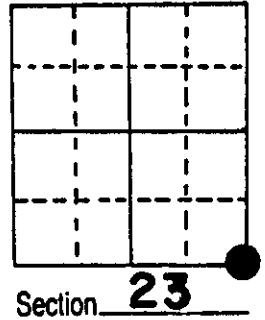
Note: This form is intended and designed to fulfill all requirements of Wisconsin Administrative Code, Chapter A-E 5.02, U.S. Public Land Survey Monument Record (3) (a) (b) (c) (d) (e) (f) (g) (h) (i). An additional sheet may be added if necessary to conform with said requirements.

(a) Corner location: Township 37 North

Range 10 East/West

Town/City/Village OF STELLA

County OF ONEIDA

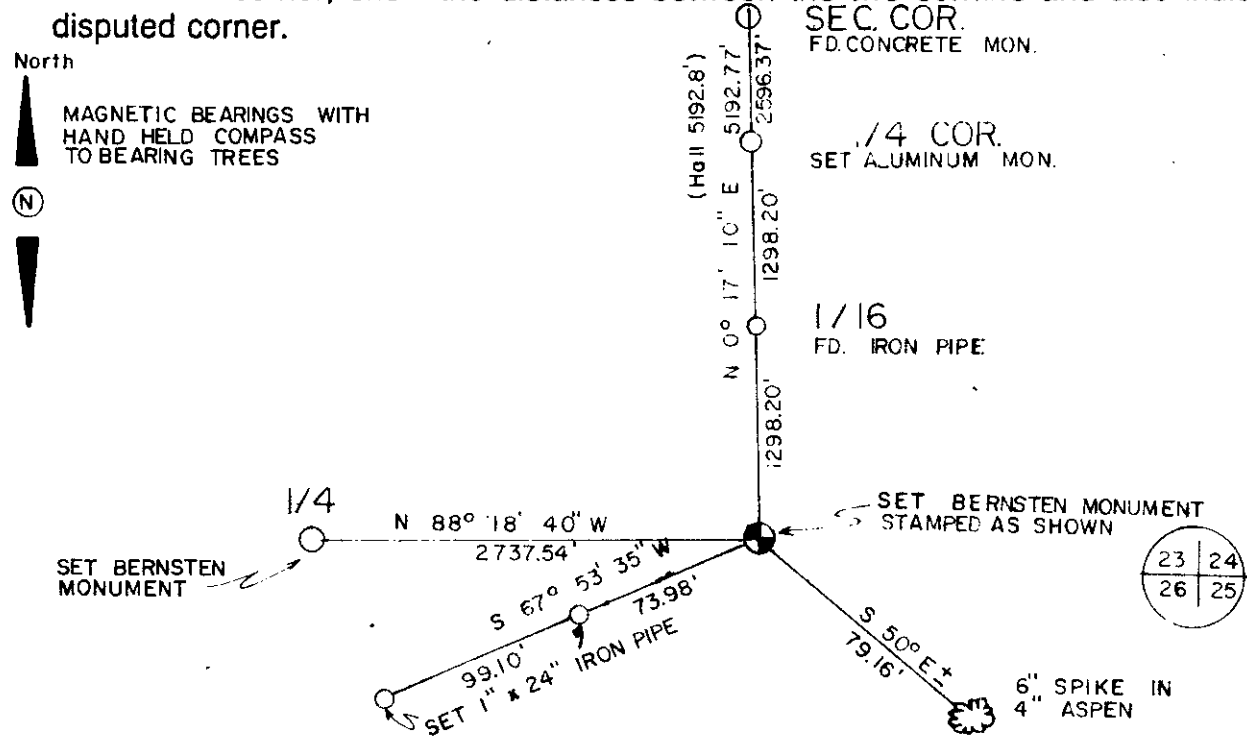


(b) (f) (g) (h) Description of monument found at this corner and if it was accepted, state all evidence (material, testimonial, occupational, plats, records, other monuments) used as a basis for accepting. If not accepted or if nothing was found, state evidence used as basis for establishing location. If reestablished through lost corner proportionate methods, indicate all monuments, distances and directions used to establish.

- 1863 W. E. Daughterty set orig corner.
- 1929 Harry C. Hall recovered original Section Corner calls for iron pipe and scribed cedar post in field W. Pine stump S 69° E 102.9' ; W pine stump N 73 3/4° E 103.0' ; wire fence N & S east 42.2'. He worked the east line of Section 23.

I reestablished this corner by using Halls information on the east line. The position for this corner falls in a young pine plantation that was previously a field. I searched for Halls pipe and references but none was found. I set a Bernsten Monument 6" above grade and referenced as shown below.

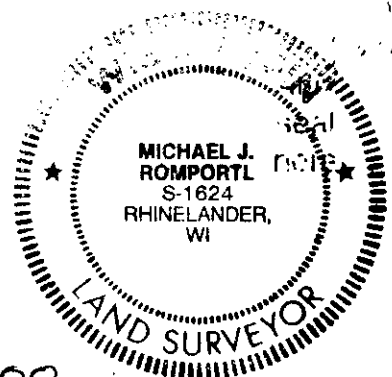
(c) (d) (e) Plan view of corner with ties to at least 4 witness monuments. If in disagreement with previously established corner, show the distances between the two corners and also indicate the ties to the disputed corner.



(i) I, MICHAEL J. ROMPORTL R.L.S. 1624
 (type or print name) certify that the corner location on this record was determined by me or under my direction and control and that this U.S. Public Land Survey Monument Record is correct and complete to the best of my knowledge and belief.

Michael J. Romportl November 1, 1984
 Signature Date

GENISOT & ASSOCIATES, INC
 1512 N EAGLE
 RHINELANDER, WIS



Index No. 7-21

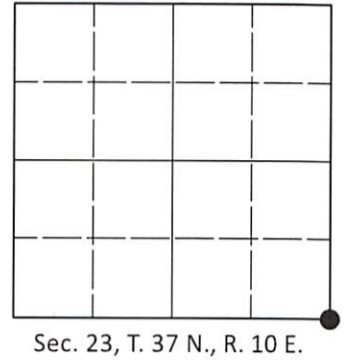
3710230000

U.S. PUBLIC LAND SURVEY MONUMENT RECORD

Note: This form is intended and designed to fulfill all requirements of Wisconsin Administrative Code, Chapter A-E 7.08 U.S. Public Land Survey Monument Record (3)(a-i).

(a) CORNER LOCATION
 Cor. of Secs. 23, 24, 25 & 26
 Township 37 North
 Range 10 East of the 4th P.M.
 Town of Stella
 County of Oneida

WISCRS - Oneida County
 N: 176,444.87 USft
 E: 317,854.57 USft
 Datum: NAD 83(2011) ep. 2010.00
 GNSS Method: RTN - Offset
 GNSS Control: WISCORS VRS



(b)(f)(g)(h) Description of monument found at this corner and if it was accepted, state all evidence (material, testimonial, occupational, plats, records, other monuments) used as a basis for accepting. If not accepted or if nothing was found, state evidence used as basis for establishing location. If re-established through lost corner proportionate methods, indicate all monuments, distances and directions used to establish. Indicate type of monument and sign post found or set.

This record is a perpetuation of the following land corner document(s):

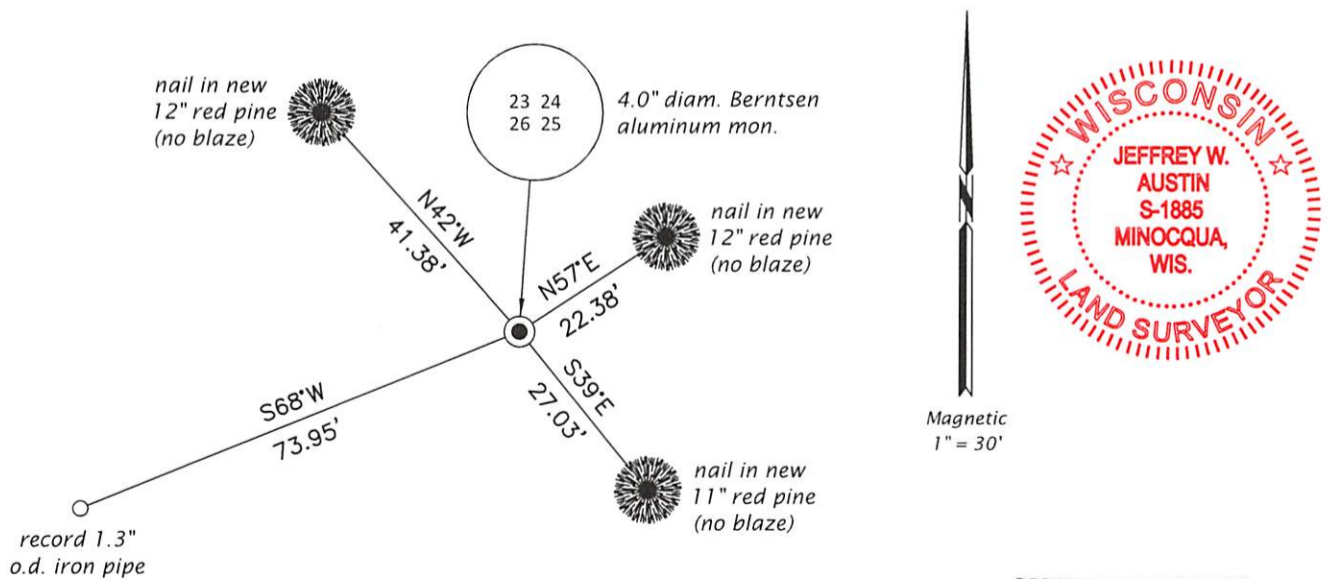
November 1, 1984: USPLS Monument Record by Michael J. Romportl, filed in Oneida County

A complete history of the corner can be found on the previous land corner document(s). I accept the record activity as a true and faithful perpetuation or reestablishment of the original corner location and further perpetuate it as described below.

July 12, 2021: I found and accepted the record monument, a 4.0" diam. Berntsen aluminum monument, firmly set, with a 4.0" diam. aluminum cap projecting 3" above the ground surface. The record aspen bearing tree is a stump. The far iron pipe reference monument is bent. I found or established accessories as shown below. I found a white vinyl sign post bearing SE, 0.7 ft.

The coordinate value shown has been verified by at least one of the following methods: 1) comparison to a previously GNSS determined published value; 2) the value is the average of two or more GNSS observations at a markedly different time; 3) one or more distances were measured back to the GNSS observed corner from temporary GNSS observed offset locations.

(c)(d)(e) Plan view of corner with ties to at least 4 witness monuments. If in disagreement with previously established corner, show the distances between the two corners and also indicate the ties to the disputed.



REGISTER OF DEEDS OFFICE
 ONEIDA COUNTY
 FILED

SEP 27 2021

KYLE J. FRANSON
 REGISTER OF DEEDS

(i) I, Jeffrey W. Austin, Professional Land Surveyor No. S-1885, hereby certify that the corner location on this record was determined by me or under my direction and control and that this U.S. Public Land Survey Monument Record is correct and complete to the best of my knowledge and belief.


 Signature

SEP 5, 2021
 Date