

# U.S. PUBLIC LAND SURVEY MONUMENT RECORD

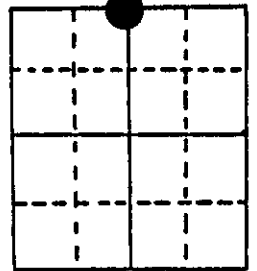
Note: This form is intended and designed to fulfill all requirements of Wisconsin Administrative Code, Chapter A-E 5.02, U.S. Public Land Survey Monument Record (3) (a) (b) (c) (d) (e) (f) (g) (h) (i). An additional sheet may be added if necessary to conform with said requirements.

(a) Corner location: Township 37 North

Range 10 East ~~West~~

Town/City/Village OF STELLA

County OF ONEIDA

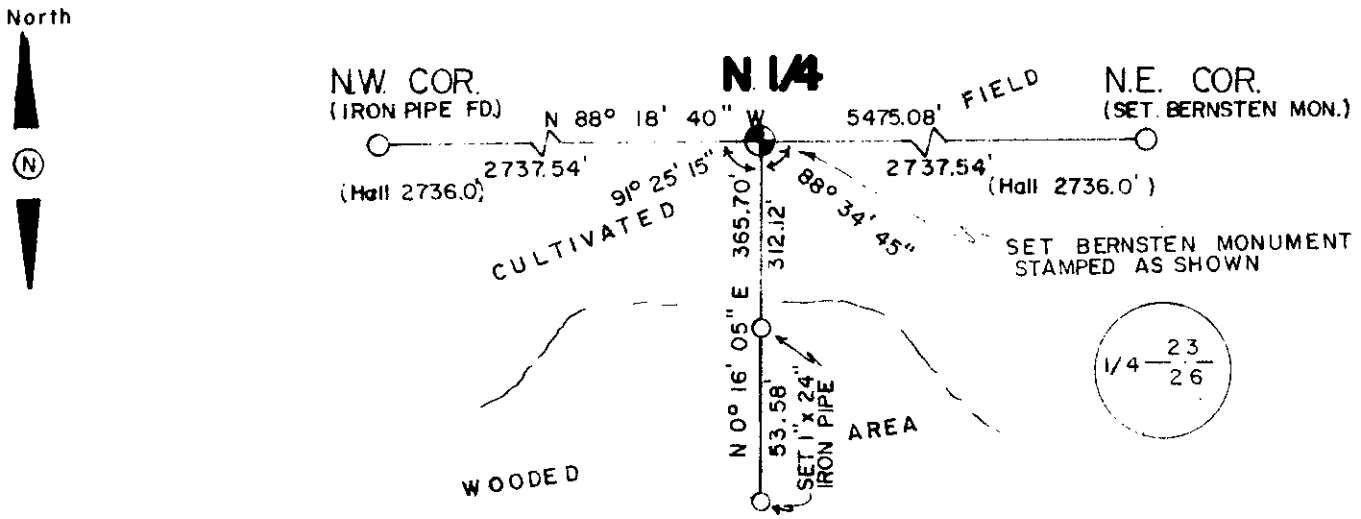


Section 26

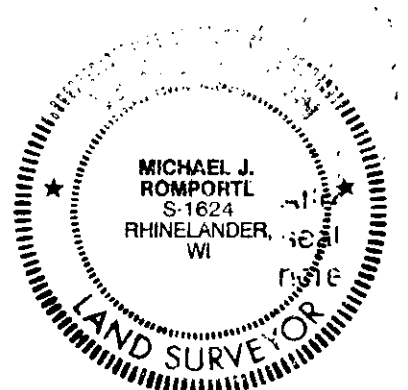
(b) (f) (g) (h) Description of monument found at this corner and if it was accepted, state all evidence (material, testimonial, occupational, plats, records, other monuments) used as a basis for accepting. If not accepted or if nothing was found, state evidence used as basis for establishing location. If reestablished through lost corner proportionate methods, indicate all monuments, distances and directions used to establish.

1863 W.E. Daughterty set orig. corner.  
1929 Harry C. Hall proportioned corner and set a iron pipe and scribed cedar post & pile of rocks in open field no bearings near.  
I proportioned this corner as shown below. The position for this corner falls in a cultivated field. I dug for evidence of Halls pipe and concluded that through the years this corner has been destroyed. At this corner I set a Bernsten Monument 18" below grade and referenced it as shown below.

(c) (d) (e) Plan view of corner with ties to at least 4 witness monuments. If in disagreement with previously established corner, show the distances between the two corners and also indicate the ties to the disputed corner.



(i) I, MICHAEL J. ROMPORTL R.L.S. 1624  
 (type or print name) certify that the corner location on this record was determined by me or under my direction and control and that this U.S. Public Land Survey Monument Record is correct and complete to the best of my knowledge and belief.



Index No. 219

Michael J. Romports November 1, 1984  
 Signature Date  
 GENISOT & ASSOCIATES, INC.  
 1512 N. EAGLE  
 RHINELANDER WIS.

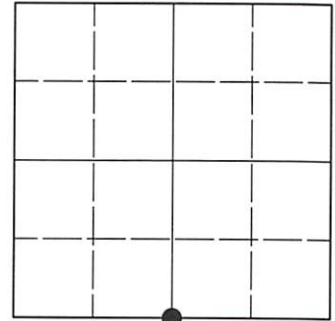
3710230020

# U.S. PUBLIC LAND SURVEY MONUMENT RECORD

Note: This form is intended and designed to fulfill all requirements of Wisconsin Administrative Code, Chapter A-E 7.08 U.S. Public Land Survey Monument Record (3)(a-i).

(a) CORNER LOCATION  
 1/4 Cor. of Secs. 23 & 26  
 Township 37 North  
 Range 10 East of the 4th P.M.  
 Town of Stella  
 County of Oneida

WISCRS - Oneida County  
 N: 176,513.72 USft  
 E: 315,118.26 USft  
 Datum: NAD 83(2011) ep. 2010.00  
 GNSS Method: RTN - Direct  
 GNSS Control: WISCRS VRS



Sec. 23, T. 37 N., R. 10 E.

(b)(f)(g)(h) Description of monument found at this corner and if it was accepted, state all evidence (material, testimonial, occupational, plats, records, other monuments) used as a basis for accepting. If not accepted or if nothing was found, state evidence used as basis for establishing location. If re-established through lost corner proportionate methods, indicate all monuments, distances and directions used to establish. Indicate type of monument and sign post found or set.

*This record is a perpetuation of the following land corner document(s):*

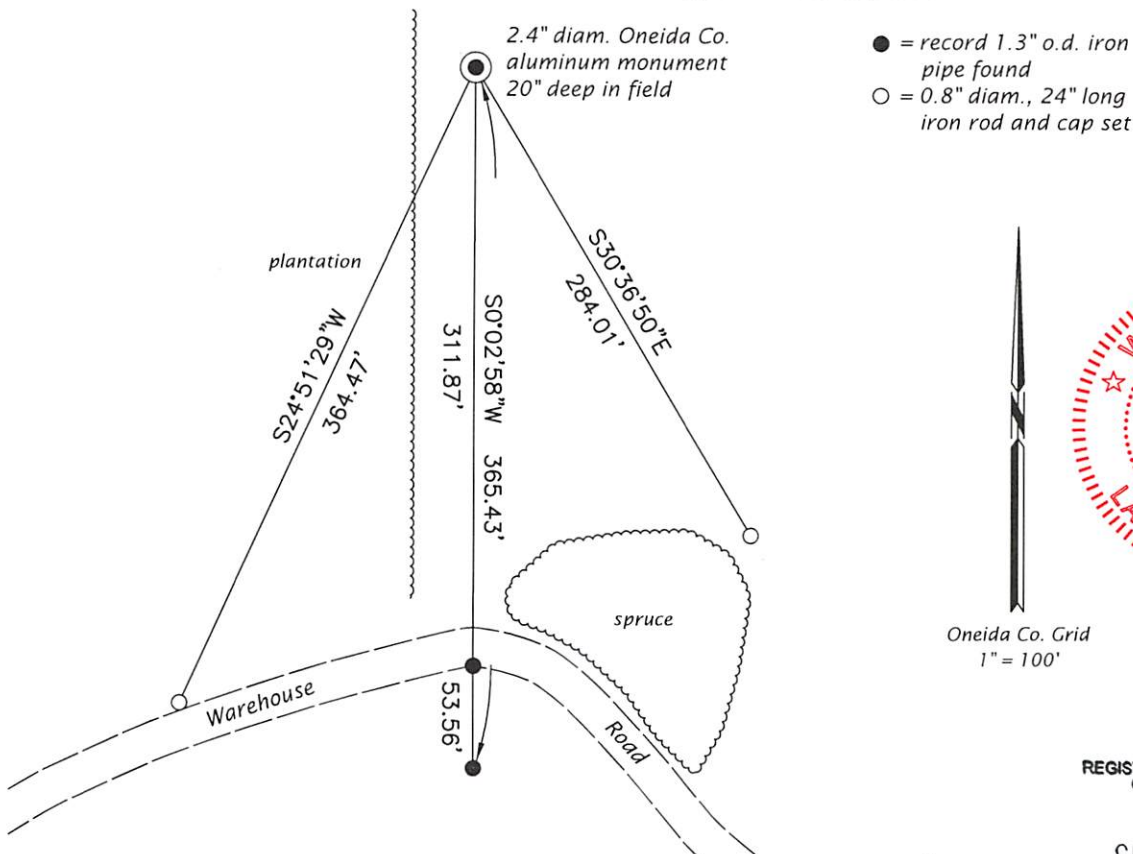
*November 1, 1984: USPLS Monument Record by Michael J. Romportl, filed in Oneida County*

*A complete history of the corner can be found on the previous land corner document(s). I accept the record activity as a true and faithful perpetuation or reestablishment of the original corner location and further perpetuate it as described below.*

*July 14, 2021: I found and accepted the record monument, a 2.4" diam. aluminum pipe, firmly set, with a 3.3" diam. Oneida Co. aluminum cap buried 20" beneath the ground surface. I found or established accessories as shown below. I found a white vinyl sign post bearing East, 0.9 ft.*

*The coordinate value shown has been verified by at least one of the following methods: 1) comparison to a previously GNSS determined published value; 2) the value is the average of two or more GNSS observations at a markedly different time; 3) one or more distances were measured back to the GNSS observed corner from temporary GNSS observed offset locations.*

(c)(d)(e) Plan view of corner with ties to at least 4 witness monuments. If in disagreement with previously established corner, show the distances between the two corners and also indicate the ties to the disputed.



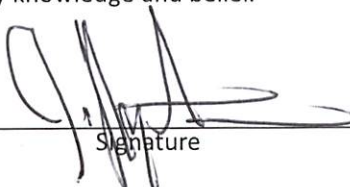
Oneida Co. Grid  
 1" = 100'

REGISTER OF DEEDS OFFICE  
 ONEIDA COUNTY  
 FILED

SEP 27 2021

KYLE J. FRANSON  
 REGISTER OF DEEDS

(i) I, Jeffrey W. Austin, Professional Land Surveyor No. S-1885, hereby certify that the corner location on this record was determined by me or under my direction and control and that this U.S. Public Land Survey Monument Record is correct and complete to the best of my knowledge and belief.

  
 Signature

SEP. 5, 2021  
 Date