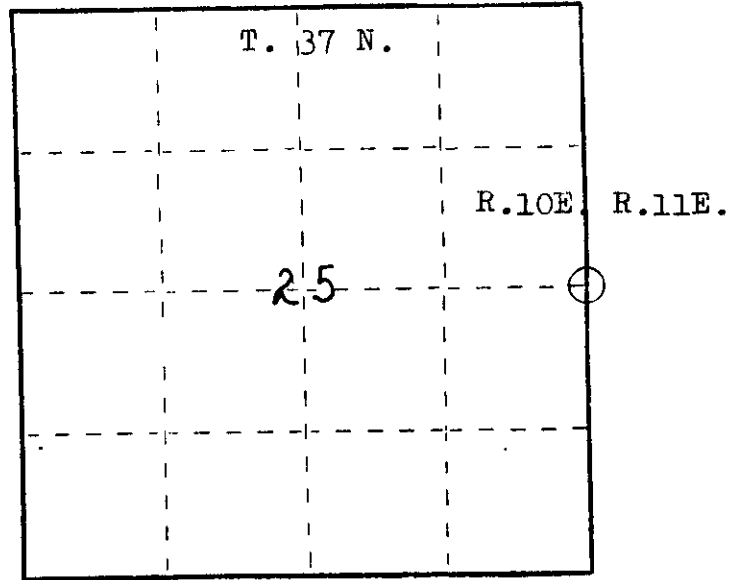


U. S. PUBLIC LAND SURVEY MONUMENT RECORD

INSTRUCTIONS: This record shall show the location of the corner and shall include all of the following nine elements (a through i).

- (a) Identify the corner by reference to the U.S. public land survey system.
 ○ = Corner monument restored.

1/4 Corner bet. Sections 25-30
 T.37N. R.10E.- R.11E.



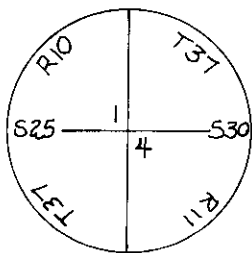
- (b) Describe any record evidence, monument evidence, occupational evidence, testimonial evidence or any other material evidence you considered, and whether the monument was found or placed.

Recovered a 2" Iron Pipe with brass cap stamped in good condition and securely set, monument protrudes 3' above ground. This monument was set by V.W. Maine, Oneida County Surveyor as per notes 10-22-35. Maine recovered D.H. Vaughn's old scribed stake set in 1906, he also recovered Vaughn's O.B.T.'s and an original Government B.T. Unable to find evidence of either surveyors O.B.T.'s as driveway development in this area has probably disturbed old stumps.

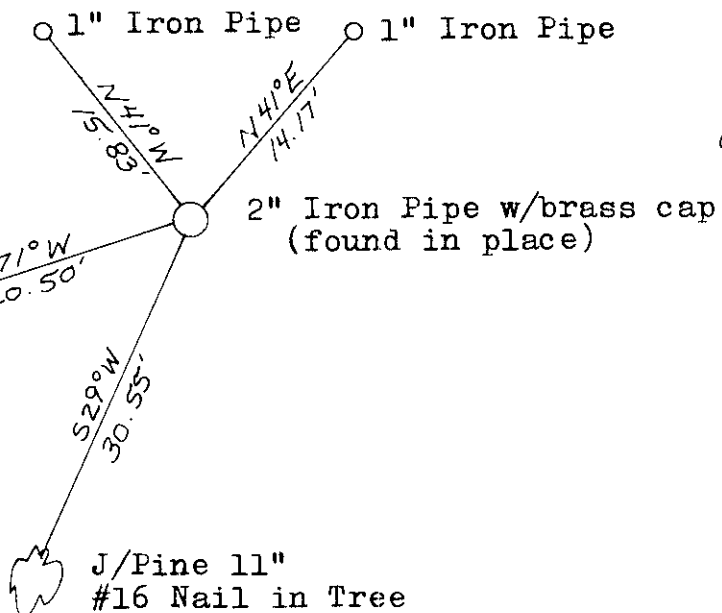
- (c) In the plan view drawing below, provide reference ties to at least 4 witness monuments, or, if the location is within a municipality, to at least 2 witness monuments. (Witness monuments shall be made of concrete, natural stone, iron or other equally durable material.)
 Describe witness monuments.

- (d) Show a plan view drawing depicting the relevant monuments and reference ties which is sufficient in detail to enable accurate relocation of the corner monument if the corner monument is disturbed. Indicate north.

Brass Cap Stamped:



W/Birch 8"
 #16 Nail in Tree



T-25

(e) Describe any material discrepancy between the location of the corner as restored or reestablished and the location of that corner as previously restored or reestablished by distance and direction. Show the discrepancy on the plan view drawing under (d), above. Show the distances between the corner as previously restored or reestablished and (1) the corner as restored or reestablished, and (2) to at least 2 of the witness monuments shown on the drawing in (d), above.

None

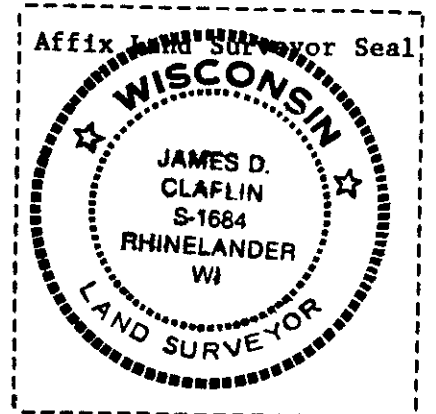
(f) Was the corner restored through acceptance of (1) an obliterated evidence location, or, (2) a found perpetuated location?

(Found perpetuated location)

(g&h) Was the corner reestablished through lost corner proportionate methods? If so, show the method, including the directions and distances to other public land survey corners used as evidence or used for proportioning in determining the corner location?

REGISTER'S OFFICE }
Oneida County, Wis. }

Received for Record the 24 day of
June A.D. 1983 at
3:15 o'clock P M. and recorded in
Vol. _____ on page _____
Donis George Kuehn
Register



(i) I, James D. Claflin
(type or print name) certify that the corner location shown
on this record was determined by me or under my direction and
control and that this U.S. Public Land Survey Monument Record is
correct and complete to the best of my knowledge and belief.

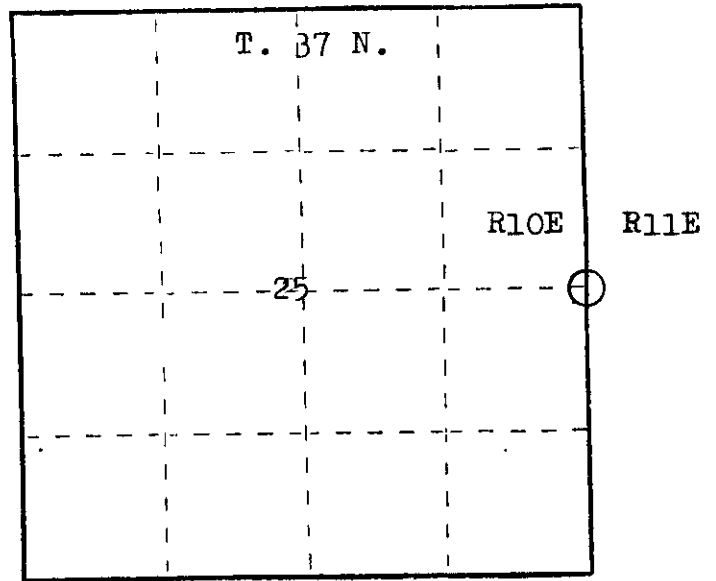
James D. Claflin Signature Date 6-17-83

U. S. PUBLIC LAND SURVEY MONUMENT RECORD

INSTRUCTIONS: This record shall show the location of the corner and shall include all of the following nine elements (a through i).

- (a) Identify the corner by reference to the U.S. public land survey system.
 ○ = Corner monument restored.

1/4 Corner bet. Sections 25-30
 T.37N. R.10E.- R.11E.

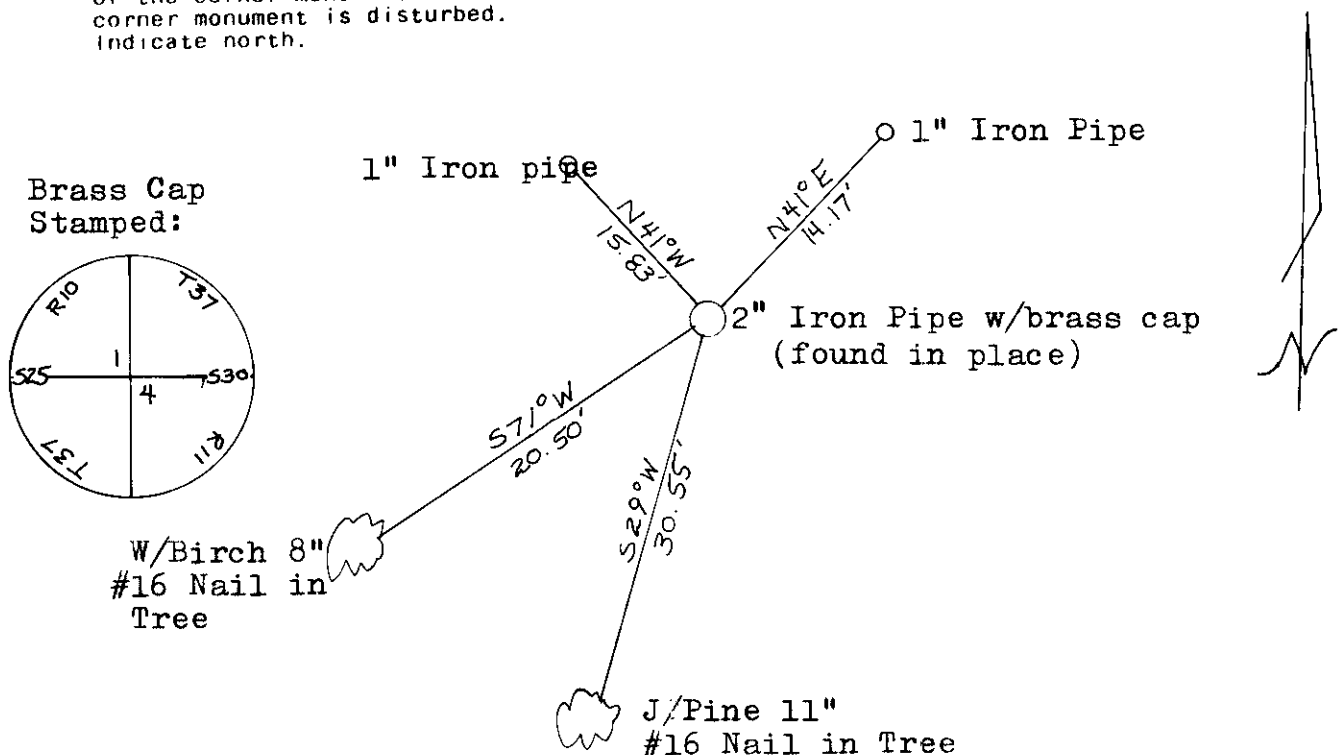


- (b) Describe any record evidence, monument evidence, occupational evidence, testimonial evidence or any other material evidence you considered, and whether the monument was found or placed.

Recovered a 2" Iron Pipe with brass cap stamped in good condition and securely set, monument protrudes 3' above ground. This monument was set by V. W. Maine, Oneida County Surveyor as per notes 10-22-35. Maine recovered D. H. Vaughn's old scribed stake set in 1906, also recovered Vaughn's O.B.T.'s and an original Government B.T. Unable to find evidence of either surveyors O.B.T.'s as driveway development in this area has probably disturbed old stumps.

- (c) In the plan view drawing below, provide reference ties to at least 4 witness monuments, or, if the location is within a municipality, to at least 2 witness monuments. (Witness monuments shall be made of concrete, natural stone, iron or other equally durable material.)
 Describe witness monuments.

- (d) Show a plan view drawing depicting the relevant monuments and reference ties which is sufficient in detail to enable accurate relocation of the corner monument if the corner monument is disturbed. Indicate north.



37102S2000

7-25

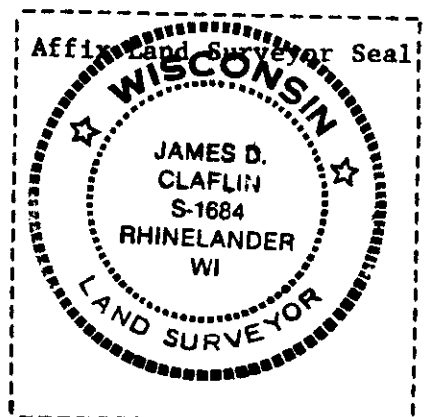
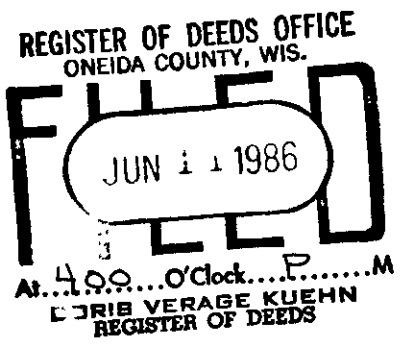
(e) Describe any material discrepancy between the location of the corner as restored or reestablished and the location of that corner as previously restored or reestablished by distance and direction. Show the discrepancy on the plan view drawing under (d), above. Show the distances between the corner as previously restored or reestablished and (1) the corner as restored or reestablished, and (2) to at least 2 of the witness monuments shown on the drawing in (d), above.

None

(f) Was the corner restored through acceptance of (1) an obliterated evidence location, or, (2) a found perpetuated location?

(Found perpetuated location)

(g&h) Was the corner reestablished through lost corner proportionate methods? If so, show the method, including the directions and distances to other public land survey corners used as evidence or used for proportioning in determining the corner location?



(i) I, James D. Claflin (type or print name) certify that the corner location shown on this record was determined by me or under my direction and control and that this U.S. Public Land Survey Monument Record is correct and complete to the best of my knowledge and belief.

James D. Claflin Signature 6-17-83 Date

This form is intended to fulfill the requirements of Chapter A-E 7.08 (3)(a) thru (i) U.S. Public Land Survey Monument Location Record, Wisconsin Administrative Code. Use the reverse side of form for continuation.

U.S. PUBLIC LAND SURVEY MONUMENT LOCATION RECORD

Recorders Data

USPLS CORNER: WEST 1/4 CORNER SECTION: 30 TOWNSHIP: 37 NORTH RANGE: 11 EAST

NAME OF WATERWAY FOR M.C. CORNER : N/A SECTION LINE: N/A

~~(CITY)(VILLAGE)(TOWN)~~ OF: PIEHL COUNTY OF: ONEIDA

Description of monument found or placed and all other evidence used as the basis for monument location; including monuments and related measurements required if the corner location was reestablished by lost corner proportionate methods. Also indicate name of original surveyor, original survey date and the corner monument, bearing trees, witness or other reference monuments established; including measured bearing and distance ties, from available records.

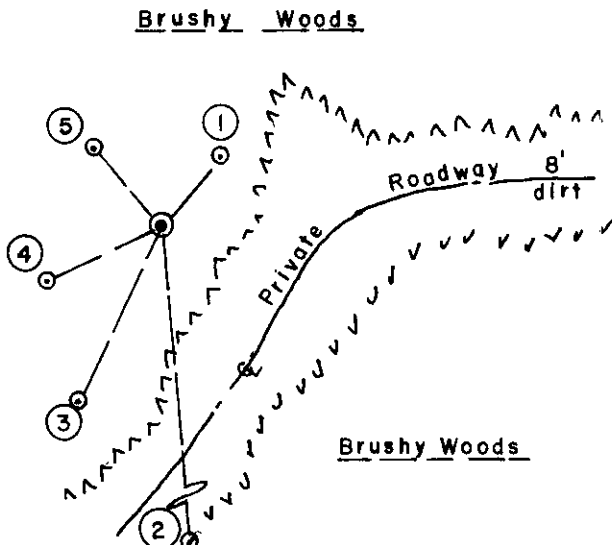
THIS CORNER HAS BEEN RE-REFERENCED AT THE REQUEST OF ONEIDA COUNTY SURVEYOR MICHAEL ROMPORTL. Found and accepted an old 2" dia. iron pipe monument with stamped brass cap 40" above existing grade, in a shallow rock cairn, which I replumbed and secured for new ties below; previous recovery notes from USPLS Monument Record filed by James D. Claflin, RLS 1684, June 11, 1986 in Oneida County records.

In July 1859, Hiram C. Fellows/GLO set a wood post as original 1/4 corner and marked OBTs: 10" Tamarack S35°W 23 links and a 7" Bw N71°E 26 links, all of which are now obliterated. In October 1935, V.W. Maine, Oneida Co. Surveyor, set a 2" dia. iron pipe monument with stamped brass cap in place of old scribed wood post set by D.H. Vaughn in 1906, and also recovered Vaughns BTs and a GLO OBT.

In June 1986, James D. Claflin, RLS 1684, recovered Maines capped iron pipe monument in good condition 3' above ground, but did not find any evidence of previous record BTs by GLO, Vaughn or Maine; new references were noted by Claflin as a 1" iron pipe N41°W 15.83', a 1" iron pipe N41°E 14.17'; a 11" Pj with #16 nail S29°W 30.55' and an 8" Bw with #16 nail S71°W 20.50', all of which I found and used for new ties below. In 1995, Todd Loftus, RLS 1523, found a 2.5" dia. brass capped iron pipe monument at this corner per his Plat of Survey filed as B-3189 in Oneida Co. records.

This recovery completed June 14, 1999; there were no direct witnesses other than a drive-by by adjacent owner at Fire No. 1901. I set a standard white poly 'T' marker post 8" West of corner monument and nailed a standard BT sign to upper NE face of SW Jack Pine BT. Corner falls about 115' West of Twin Lakes Creek culvert under dirt roadway East.

Plan view map of monument location with bearing and distance ties to a minimum of four(4) described witness or reference monuments of concrete, natural stone, iron, live bearing trees or equivalent material. If applicable, also show a minimum of two(2) bearing and distance ties to any other monument found and not accepted; including the bearing and distance from the accepted monument.



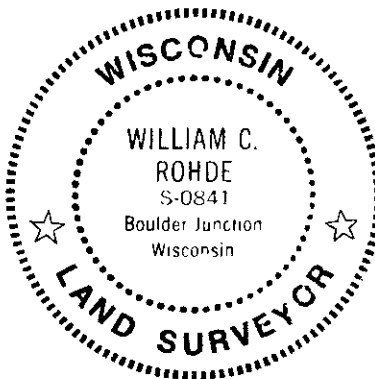
WITNESS MONUMENT TIES:

- ① 1" dia. iron pipe found with top 6" above grade in which I set a standard yellow poly Reference Mark cap N39°E 14.15'.
- ② New BT 12" Pr S05°E 61.43'.
- ③ Old BT 16" Pj tipped 30°+- SE with face blazes shut but plain S25°W 30.51'.
- ④ Old BT 11" Bw tipped 15°+-SE with face blazes open S64°W 19.91'.
- ⑤ 1" dia. iron pipe found with top 9" above grade in which I set a standard yellow poly Reference Mark cap at N41°W 15.91'.

SCALE: 1" = 30 feet

Unless otherwise indicated, all bearing tree ties are to a .25" dia. by 2.5" long PK nail with a 1.25" dia. steel washer stamped BT is also driven into unblazed face of bearing tree at DBH; the basis for measured bearings is by compass to nearest degree and all tie distances are measured horizontal by steel tape corrected to nearest 1/100th feet at standard temperature of 68° F.

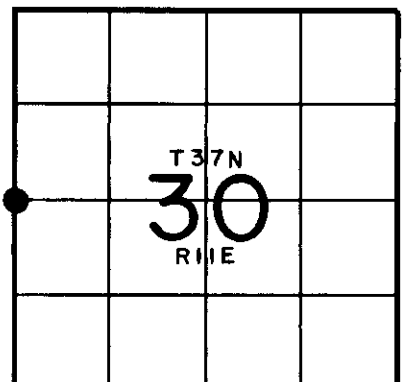
RLS SEAL:



LAND SURVEYOR CERTIFICATE:

I, William C. Rohde, hereby certify that I am duly licensed as a Professional Land Surveyor in the State of Wisconsin; that this USPLS monument location was determined by me and/or under my direct supervision and control; and that this U.S. Public Land Survey Monument Location Record is true and correct to the best of my knowledge and belief.

Signed *William C. Rohde*
William C. Rohde RLS 841



SECTION LOCATION MAP

INDEX NO. T 1
3710252000