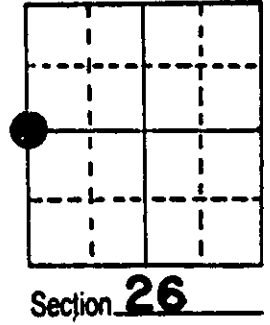


U.S. PUBLIC LAND SURVEY MONUMENT RECORD

Note: This form is intended and designed to fulfill all requirements of Wisconsin Administrative Code, Chapter A-E 5.02, U.S. Public Land Survey Monument Record (3) (a) (b) (c) (d) (e) (f) (g) (h) (i). An additional sheet may be added if necessary to conform with said requirements.

(a) Corner location: Township 37 North
 Range 10 East/West

Town/City/Village of STELLA
 County of ONEIDA

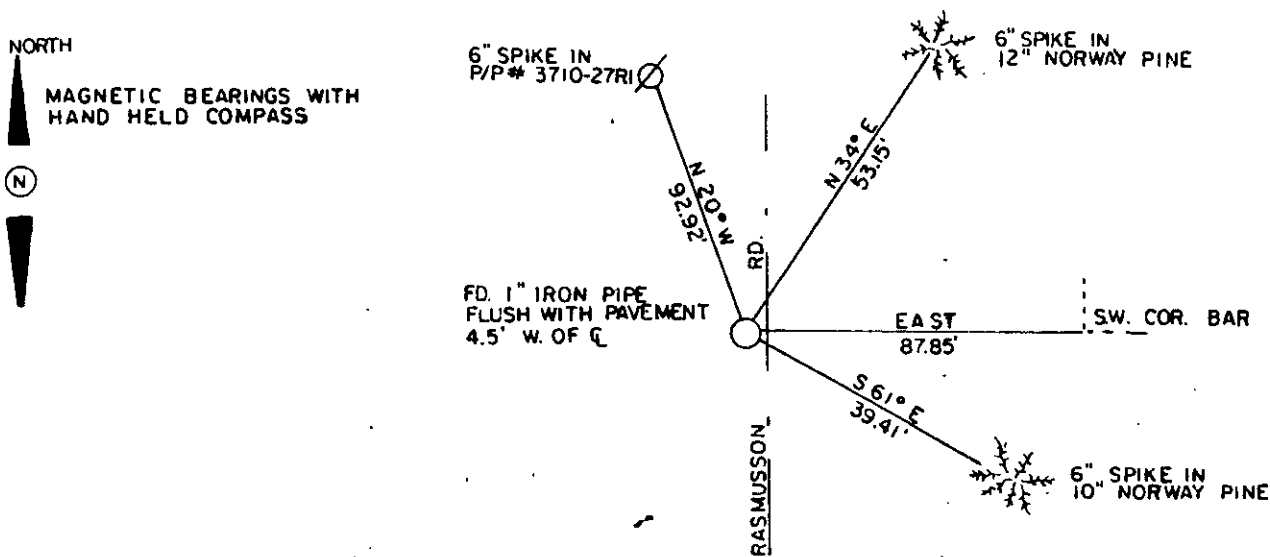


(b) (f) (g) (h) Description of monument found at this corner and if it was accepted, state all evidence (material, testimonial, occupational, plats, records, other monuments) used as a basis for accepting. If not accepted or if nothing was found, state evidence used as basis for establishing location. If reestablished through lost corner proportionate methods, indicate all monuments, distances and directions used to establish.

- 1863 William E Daughterty set original corner.
- 1929 Harry C. Hall no evidence of orig. cor. Mr. Hall proportioned the corner while subdividing Sec. 26. He set a 1½" steel shaft in a field and states no bearings near.
- 1967 J. C. Kirby found iron pipe at corner.

At this corner I found a 1" iron pipe in Rasmusson Road. The distances to the north and east checked reasonably well with Halls so I accepted the pipe for the location of the corner and witnessed it as shown below.

(c) (d) (e) Plan view of corner with ties to at least 4 witness monuments. If in disagreement with previously established corner, show the distances between the two corners and also indicate the ties to the disputed corner.



(i) I, MICHAEL J. ROMPORTL R.L.S. 1624
 (type or print name) certify that the corner location on this record was determined by me or under my direction and control and that this U.S. Public Land Survey Monument Record is correct and complete to the best of my knowledge and belief.

Michael J. Romportl December 4, 1984
 Signature Date
 GENISOT & ASSOCIATES, INC.
 RHINELANDER, WIS.



Index No. 7-17

3710272000

This form is intended to fulfill the requirements of Chapter A-E 7.08 (3)(a) thru (i) U.S. Public Land Survey Monument Location Record, Wisconsin Administrative Code. Use the reverse side of form for continuation.

U.S. PUBLIC LAND SURVEY MONUMENT LOCATION RECORD

Recorders Data

USPLS CORNER: WEST 1/4 CORNER SECTION: 26 TOWNSHIP: 37 NORTH RANGE: 10 EAST

NAME OF WATERWAY FOR M.C. CORNER: N/A SECTION LINE: N/A

(CITY)(VILLAGE)(TOWN) OF: STELLA COUNTY OF: ONEIDA

Description of monument found or placed and all other evidence used as the basis for monument location; including monuments and related measurements required if the corner location was reestablished by lost corner proportionate methods. Also indicate name of original surveyor, original survey date and the corner monument, bearing trees, witness or other reference monuments established; including measured bearing and distance ties, from available records.

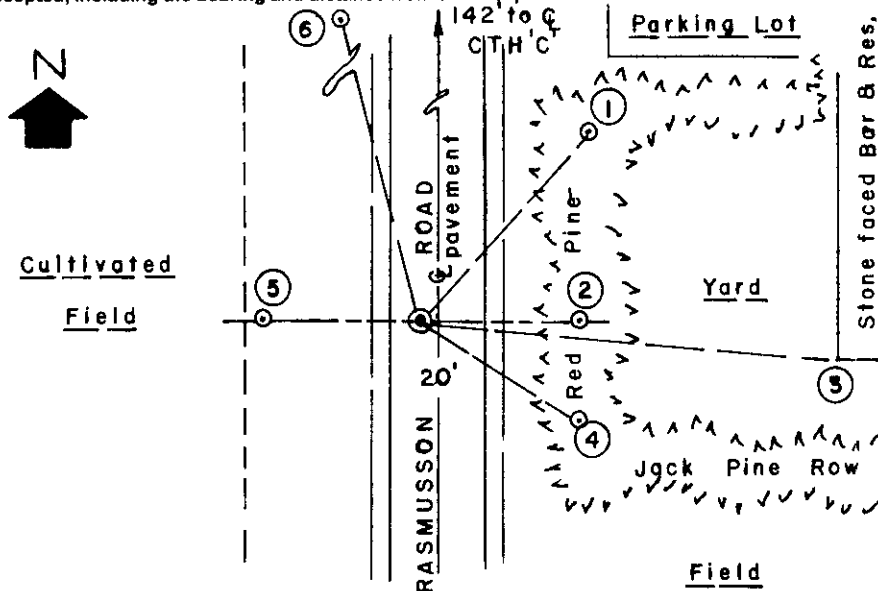
THIS CORNER HAS BEEN RE-REFERENCED AT THE REQUEST OF ONEIDA COUNTY SURVEYOR MICHAEL ROMPORTL. Found and accepted an old 1" dia. iron pipe with uncapped top flush with existing blacktop road pavement, in which I set a 1/4" dia. by 2.5" long PK nail as a center point; previous recovery notes from USPLS Monument Record filed by Michael J. Romportl, RLS 1684, December 1984 in Oneida County survey records.

In August 1863, William E. Daugherty/GLO set a wood post as the original 1/4 corner and marked OBTs: a 7" Pw S61°W 8 links and an 8" Pw S72°E 8 links, all of which are now obliterated within roadway area.

In 1929, Harold C. Hall found no evidence of original corner, so he set a 1.5" dia. steel shaft in existing field by single proportion while subdividing Section 26. In 1967, Joseph C. Kirby, RLS 253 found and accepted a 1" iron pipe at the corner.

In 1984, Michael J. Romportl, RLS 1624, found and accepted a 1" iron pipe in Rasmusson Road, and noted that his distances to north and east checked reasonably well with Halls, so he witnessed the iron pipe as found: 6" spike in power pole #3710-27R1 N20°W 92.92'; a 6" spike in 12" Norway Pine N34°E 53.15'; SW corner of Bar East 87.85' and a 6" spike in 10" Norway Pine S61°E 39.41', which I found OK and used for new ties below. I set a standard white poly 'T' marker post 4" West of West iron rod witness monument set. Recovery completed 6-14-99 and witnessed by adjacent owner of Bar East of corner and vehicle drive-bys. Corner is 3.5' West of existing Rasmusson Road blacktop pavement centerline and about 142 feet South of centerline of CTH 'C' pavement.

Plan view map of monument location with bearing and distance ties to a minimum of four(4) described witness or reference monuments of concrete, natural stone, iron, live bearing trees or equivalent material. If applicable, also show a minimum of two(2) bearing and distance ties to any other monument found and not accepted; including the bearing and distance from the accepted monument.



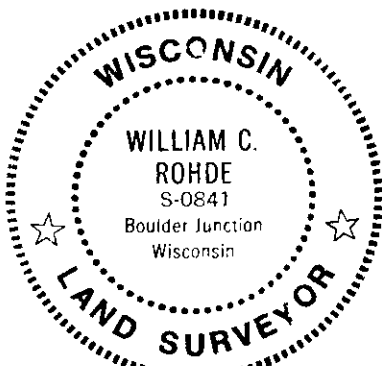
WITNESS MONUMENT TIES:

- ① Old BT 17" Pr N41°E 53.01'.
- ② 3/4" dia. by 24" long steel shaft set with uncapped top flush with grade East 33.00'.
- ③ SW corner of stone Bar S85°E at grade 87.85'.
- ④ Old BT 12" Pr S58°E 39.27'.
- ⑤ 3/4" dia. by 24" long steel shaft set with uncapped top flush with grade West 33.00'.
- ⑥ Old witness 60d spike in West face of power pole N15°W 92.95'. No 6" spike found in NE and SE Pr old BTs.

SCALE: 1" = 40'

Unless otherwise indicated, all bearing tree ties are to a .25" dia. by 2.5" long PK nail with a 1.25" dia. steel washer driven into unblazed right face and a .25" dia. by 2.5" long PK nail with a 2" dia. steel washer stamped BT is also driven into unblazed face of bearing tree at DBH; the basis for measured bearings is by compass to nearest degree and all tie distances are measured horizontal by steel tape corrected to nearest 1/100th feet at standard temperature of 68° F.

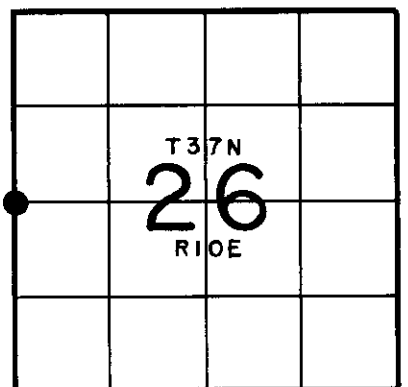
RLS SEAL:



LAND SURVEYOR CERTIFICATE:

I, William C. Rohde, hereby certify that I am duly licensed as a Professional Land Surveyor in the State of Wisconsin; that this USPLS monument location was determined by me and/or under my direct supervision and control; and that this U.S. Public Land Survey Monument Location Record is true and correct to the best of my knowledge and belief.

Signed: *William C. Rohde*
William C. Rohde RLS 841



SECTION LOCATION MAP

INDEX NO. T 17

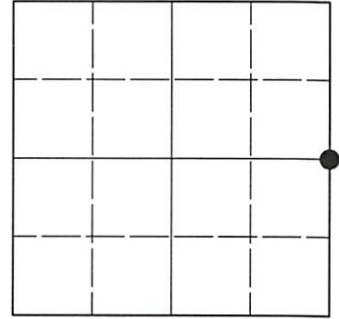
3710272000

U.S. PUBLIC LAND SURVEY MONUMENT RECORD

Note: This form is intended and designed to fulfill all requirements of Wisconsin Administrative Code, Chapter A-E 7.08 U.S. Public Land Survey Monument Record (3)(a-i).

(a) CORNER LOCATION
 1/4 Cor. of Secs. 26 & 27
 Township 37 North
 Range 10 East of the 4th P.M.
 Town of Stella
 County of Oneida

WISCRS - Oneida County
 N: 173,896.40 USft
 E: 312,432.98 USft
 Datum: NAD 83(2011) ep. 2010.00
 GNSS Method: RTN - Direct
 GNSS Control: WISCORS VRS



Sec. 27, T. 37 N., R. 10 E.

(b)(f)(g)(h) Description of monument found at this corner and if it was accepted, state all evidence (material, testimonial, occupational, plats, records, other monuments) used as a basis for accepting. If not accepted or if nothing was found, state evidence used as basis for establishing location. If re-established through lost corner proportionate methods, indicate all monuments, distances and directions used to establish. Indicate type of monument and sign post found or set.

This record is a perpetuation of the following land corner document(s):

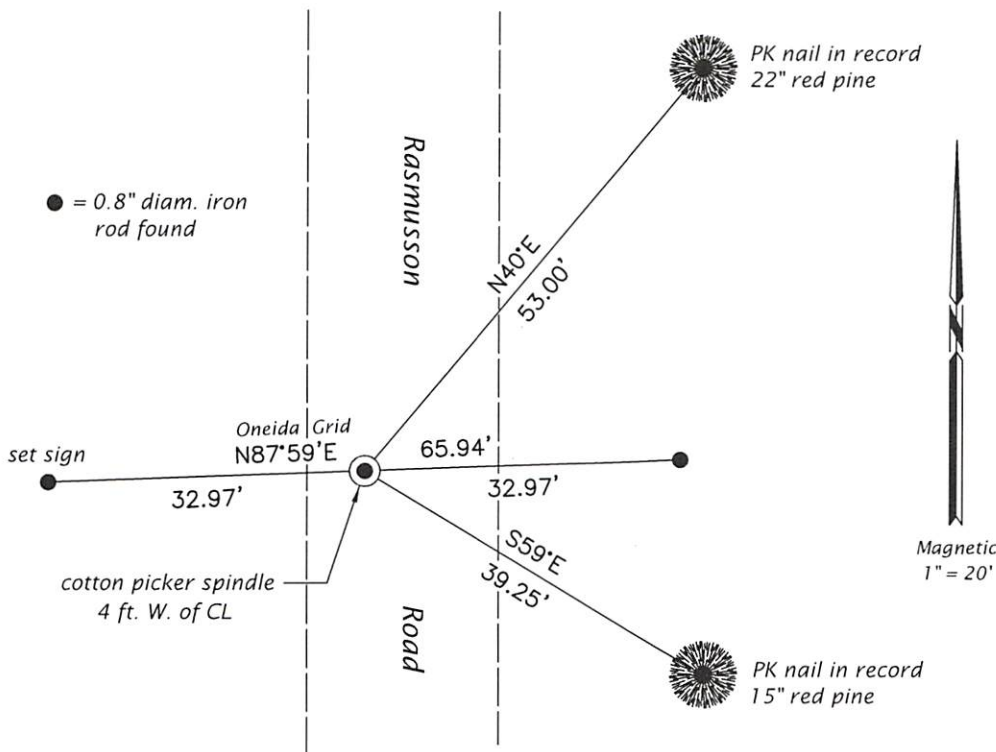
June 16, 1999: USPLS Monument Record by William C. Rohde, filed in Oneida County

A complete history of the corner can be found on the previous land corner document(s). I accept the record activity as a true and faithful perpetuation or reestablishment of the original corner location and further perpetuate it as described below.

July 14, 2021: At the midpoint of a straight line connecting the record witness monuments, I set a cotton picker spindle 4 ft. West of the road centerline. I found or established accessories as shown below.

The coordinate value shown has been verified by at least one of the following methods: 1) comparison to a previously GNSS determined published value; 2) the value is the average of two or more GNSS observations at a markedly different time; 3) one or more distances were measured back to the GNSS observed corner from temporary GNSS observed offset locations.

(c)(d)(e) Plan view of corner with ties to at least 4 witness monuments. If in disagreement with previously established corner, show the distances between the two corners and also indicate the ties to the disputed.



REGISTER OF DEEDS OFFICE
 ONEIDA COUNTY
 FILED

SEP 27 2021

KYLE J. FRANSON
 REGISTER OF DEEDS

(i) I, Jeffrey W. Austin, Professional Land Surveyor No. S-1885, hereby certify that the corner location on this record was determined by me or under my direction and control and that this U.S. Public Land Survey Monument Record is correct and complete to the best of my knowledge and belief.

[Handwritten Signature]
 Signature

SEP-5, 2021
 Date