

# U.S. PUBLIC LAND SURVEY MONUMENT RECORD

Instructions: This record shall show the location of the corner and shall include all of the following nine elements (a through i).

(a) Identify the corner by reference to the U.S. public land survey system.

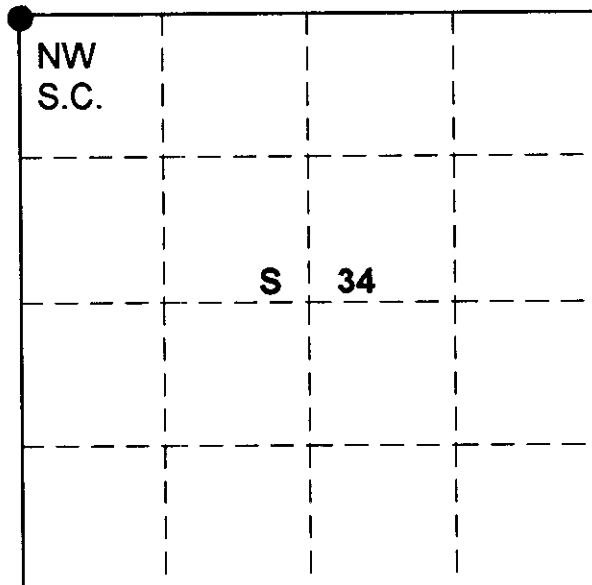
○ = Corner monument restored.

NW-S.C. Corner

Sec 34 T 37 N, R 10 E

Type of Monument:

2-1/4" Aluminum pipe W/ 3-1/4" Alloy cap.



## ONEIDA COUNTY

(b) Describe any record evidence, monument evidence, occupational evidence, testimonial evidence or any other material evidence you considered, and whether the monument was found or placed.

Original corner established in 1863 by WM. F. Daugherty Gov.t Deputy Surveyor from which Yellow Pine 14" bears N80-15'E 140.8lks and Yellow Pine bears S83E 141.90lks

D.H.Vaughn notes of 1915 indicates he had found this corner in 1899. He used this position to run to the southwest section corner to reestablished the quarter corner between sections 33 and 34. In 1915 he could find no evidence of the section corner as the area was converted to a farm field.

To reestablish the section corner he retraced his survey of 1899. Ran from southwest section corner to west quarter corner of section 34, which he set by proportional measurement in 1899. Prolonged line and a distance of 40.50 chains (2673.00') to reset section corner.

This area is now a potato field, no evidence of monument or accessories remain.

To reestablish section corner retraced line between southwest section corner and west quarter corner of section 34, same positions Vaughn used in 1915. (See page 2)

(c) In the plan view drawing below, provide reference ties to at least 4 witness monuments, or, if the location is within a municipality, to at least 2 witness monuments. (Witness monuments shall be made of concrete, natural stone, iron or other equally durable material).

Describe witness monuments:

Set two Witness monuments on section line

(1) 1" iron pipe flush with the ground  
S 00-42' 20"W 117.70'

(2) 1" iron pipe W/ 2' alloy cap 12" above ground  
S 00-42' 20"W 154.56' -cap stamped to identify

Marked new Bts. to section corner.

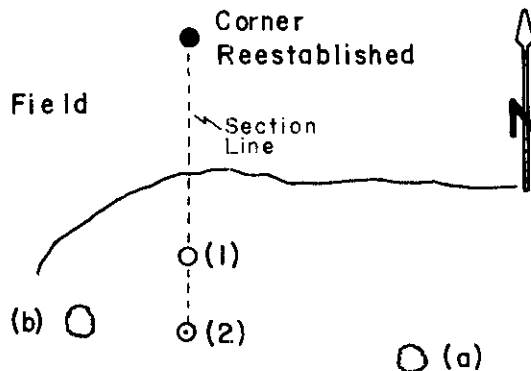
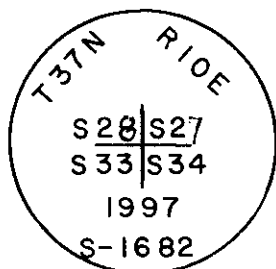
(a) Red Pine 12" S34E 206.40'

(b) Red Pine 10" S21W 159.14'

(d) Show a plan view drawing depicting the relevant monuments and reference ties which is sufficient in detail to enable accurate reestablishment of the corner monument if the corner monument is disturbed or the north.

Monument Set

2-1/4" Aluminum pipe W/ 3-1/4" Alloy cap  
18" Below Surface



(e) Describe any discrepancy between the location of the corner as restored or reestablished and the location of that corner as previously restored or reestablished by distance and direction. Show the discrepancy on the plan view drawing under (d), above. Show the distances between the corner as previously restored or reestablished and (1) the corner as restored or reestablished, and (2) to at least 2 of the witness monuments shown on the drawing in (d), above.

Continued from page 1

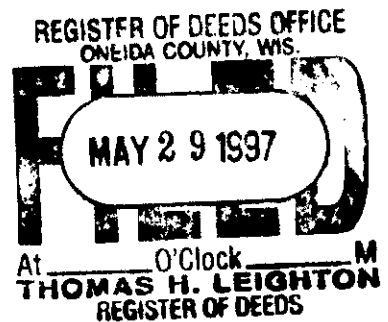
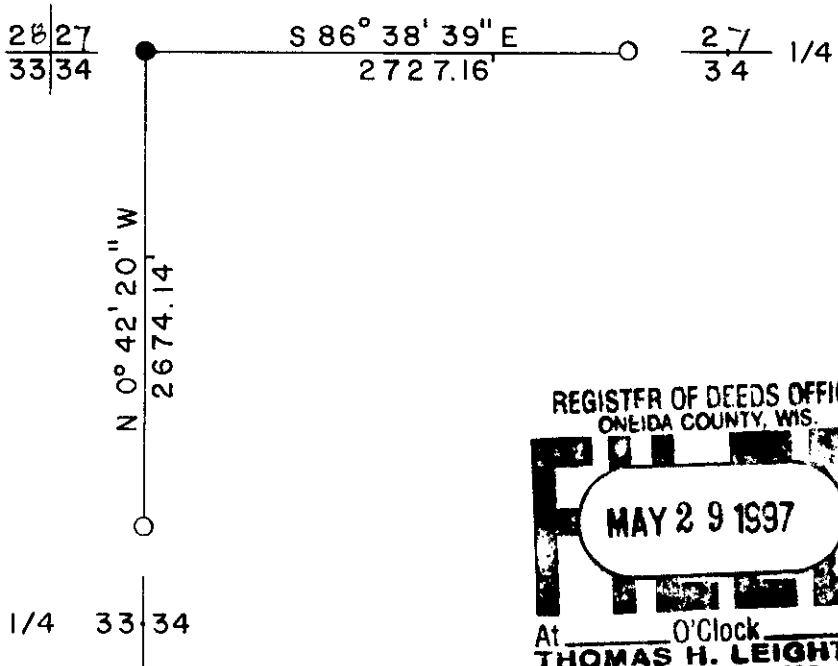
Have a distance of 2674.14' prolonged line and distance to reset section corner.

Found this to be the best acceptable method as it is compatible to D.H. Vaughn's distance's on the section line and the subdivision of section 34.

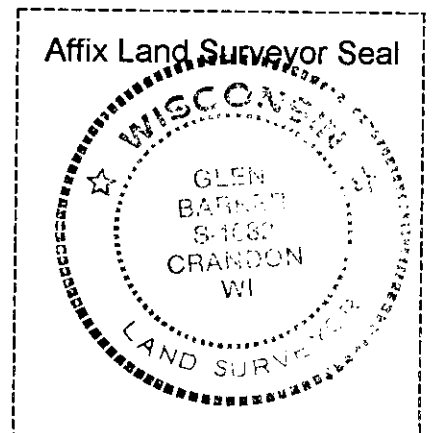
(f) Was the corner restored through acceptance of (1) an obliterated evidence location, or, (2) a found perpetuated location?

(g&h) Was the corner reestablished through lost corners proportionate methods? If so, show the method, including the directions and distances to other public land survey corners used as evidence or used for proportioning in determining the corner location?

Retracement method



(i) I, Glen Barker (type or print name) certify that the corner location shown on this record was determined by me or under my direction and control and that this U.S. Public Land Survey Monument is correct and complete to the best of my knowledge and belief.



*Glen Barker*  
Signature

5/27/97  
Date

SEC TWN RNG