

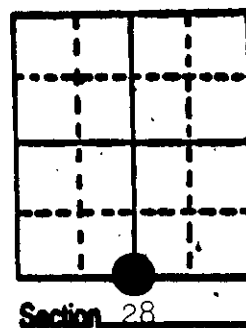
# U.S. PUBLIC LAND SURVEY MONUMENT RECORD

**Note:** This form is intended and designed to fulfill all requirements of Wisconsin Administrative Code, Chapter A-E 5.02, U.S. Public Land Survey Monument Record (3) (a) (b) (c) (d) (e) (f) (g) (h) (i). An additional sheet may be added if necessary to conform with said requirements.

(a) Corner location: Township 37 North  
 Range 10 East/West

Town/City/Village of Stella

County Oneida



(b) (f) (g) (h) Description of monument found at this corner and if it was accepted, state all evidence (material, testimonial, occupational, plats, records, other monuments) used as a basis for accepting. If not accepted or if nothing was found, state evidence used as basis for establishing location. If reestablished through lost corner proportionate methods, indicate all monuments, distances and directions used to establish.

- 1863 W.E. Daugherty established original  $\frac{1}{4}$ ; west corrected between 28 and 33 39.71 set  $\frac{1}{4}$  Y Pine 12 S  $7\frac{1}{2}$  E 98.
- 1899 B.F. Dorr recovered corner: Dist to  $C\frac{1}{4}$  of S. 28=2710.62.
- 1899 D.H. Vaughan recovered corner Dist to corner 28, 29, 32, 33=30.24 ch.
- 1914 D.H. Vaughan states road runs south from  $C\frac{1}{4}$  28 to  $S\frac{1}{4}$  28.
- 1923 D.S. Burnett found original corner and original B.T. Dist to  $C\frac{1}{4}$  28=2714.58
- 1986 I reestablish the corner using distances from the S.W. corner of Sec. 28 and Dorr's prorated  $C\frac{1}{4}$  and set an Oneida County capped Monument and witnessed it as shown below.

(c) (d) (e) Plan view of corner with ties to at least 4 witness monuments. If in disagreement with previously established corner, show the distances between the two corners and also indicate the ties to the disputed corner.

New 9" N. Pine  
 N 18 W 34.07

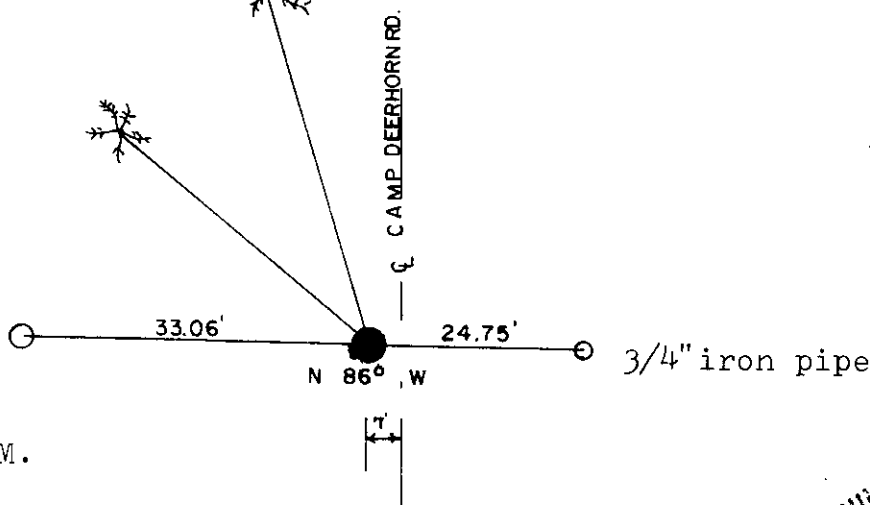
- Magnetic Bearings Taken With Handheld Compass
- Distance to 6" Nail in Side of tree
- No Scale



STAMPED  
 37-10  
 28  
 33

6" N. Pine  
 N 52 W 18.04

$\frac{1}{4}$ " iron pipe



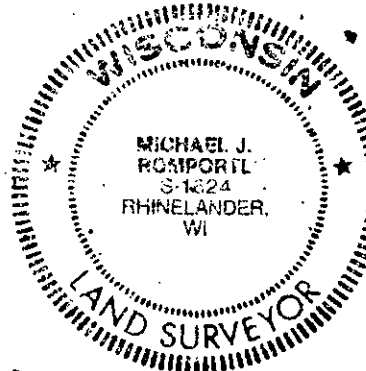
Set O.C.M.

(i) I, Michael J. Romportl

(type or print name) certify that the corner location on this record was determined by me or under my direction and control and that this U.S. Public Land Survey Monument Record is correct and complete to the best of my knowledge and belief.

Michael J. Romportl 12/2/21  
 Signature Date

GENISOT & ASSOCIATES INC.  
 1512 EAGLE ST., RHINELANDER, WIS.



Index No. 1-11

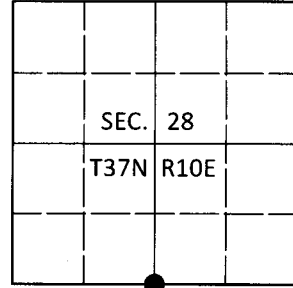
3710 280020

# U.S. PUBLIC LAND SURVEY MONUMENT RECORD

Note: This form is intended and designed to fulfill all requirements of Wisconsin Administrative Code, Chapter A-E 7.08 U.S. Public Land Survey Monument Record (3)(a-i).

(a) CORNER LOCATION  
 1/4 Cor. of Secs. 28 & 33  
 Township 37 North  
 Range 10 East of the 4th P.M.  
 Town of Stella  
 County of Oneida

WISCRS - Oneida County  
 N: 171,691.09 USft  
 E: 304,214.50 USft  
 Datum: NAD 83(2011)  
 GNSS Method: RTN - Direct  
 GNSS Control: WISCORS VRS



(b) HISTORY OF ORIGINAL CORNER ESTABLISHMENT

Original Surveyor:

Original Accessories:

Date of Survey Commenced:  
 Completed:

See previous USPLS Monument Record

(b)(f)(g)(h) Description of monument found at this corner and if it was accepted, state all evidence (material, testimonial, occupational, plats, records, other monuments) used as a basis for accepting. If not accepted or if nothing was found, state evidence used as basis for establishing location. If re-established through lost corner proportionate methods, indicate all monuments, distances and directions used to establish. Indicate type of monument and sign post found or set.

*This is a perpetuation of a previous USPLS Monument Record by Michael J. Romportl, RLS dated December 8, 1987 and filed in the office of the Oneida County Register of Deeds. A complete history of the corner can be found on the previous monument record. I accept the previous location as a true and faithful perpetuation or reestablishment of the original corner location and further perpetuate it as follows.*

*October 14, 2018: I found and accepted the record monument, a 2-1/2" diam. aluminum pipe with a 3-1/4" diam. Oneida Co. aluminum cap 4" beneath, and 1 ft. East of the West edge of pavement. Both of the record pine bearing trees are now stumps. I found or established accessories as shown below. I set a white vinyl sign post bearing West, 25 ft.*

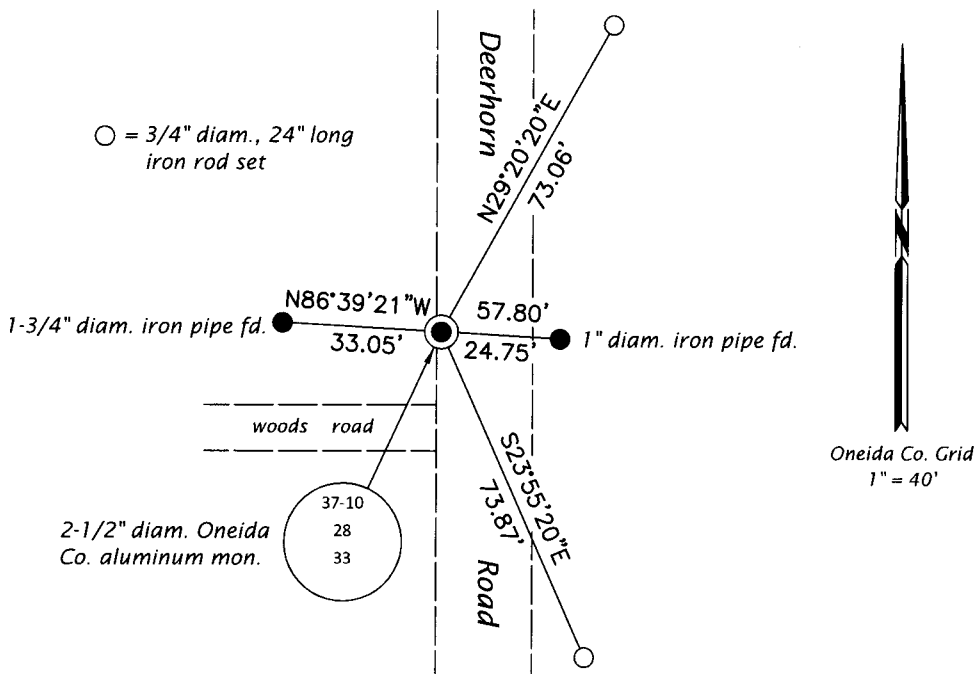
*The coordinate value shown has been verified by at least one of the following methods: 1) comparison to a previously GPS determined published value; 2) the value is the average of two or more GPS observations at a markedly different time; 3) one or more distances were measured back to the GPS observed corner from temporary GPS observed offset locations.*

REGISTER OF DEEDS OFFICE  
 ONEIDA COUNTY  
 FILED

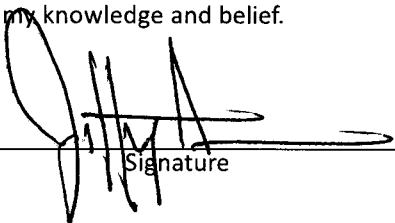
DEC 17 2018

KYLE J. FRANSON  
 REGISTER OF DEEDS

(c)(d)(e) Plan view of corner with ties to at least 4 witness monuments. If in disagreement with previously established corner, show the distances between the two corners and also indicate the ties to the disputed.



(i) I, Jeffrey W. Austin, Professional Land Surveyor No. S-1885, hereby certify that the corner location on this record was determined by me or under my direction and control and that this U.S. Public Land Survey Monument Record is correct and complete to the best of my knowledge and belief.

  
 Signature

3 DEC 2018  
 Date