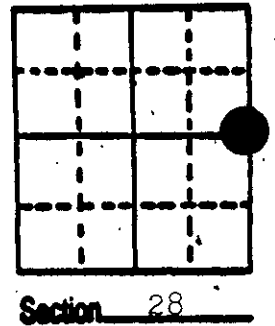
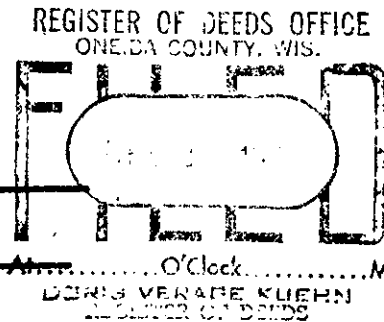


# U.S. PUBLIC LAND SURVEY MONUMENT RECORD

**Note:** This form is intended and designed to fulfill all requirements of Wisconsin Administrative Code, Chapter A-E 5.02, U.S. Public Land Survey Monument Record (3) (a) (b) (c) (d) (e) (f) (g) (h) (i). An additional sheet may be added if necessary to conform with said requirements.

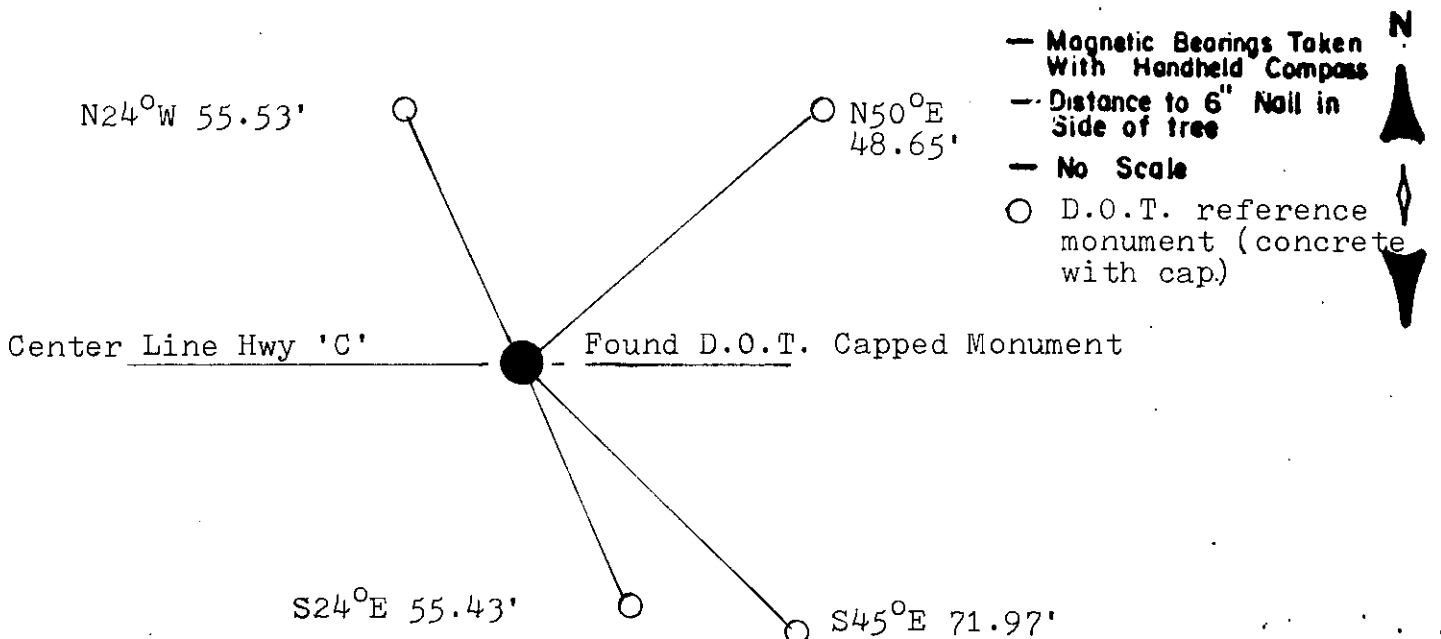
(a) Corner location: Township 37 North  
 Range 10 East/West  
 Town/City/Village of Stella  
 County Oneida



(b) (f) (g) (h) Description of monument found at this corner and if it was accepted, state all evidence (material, testimonial, occupational, plats, records, other monuments) used as a basis for accepting. If not accepted or if nothing was found, state evidence used as basis for establishing location. If reestablished through lost corner proportionate methods, indicate all monuments, distances and directions used to establish.

- 1863 W.E. Daugherty establish original corner at 40.00 ch. B.T. W. Pine 12 N 68 E 11; W. Pine 8 S 25 E 9.
- 1899 B.F. Dorr at corner.
- 1914 D.H. Vaughan states road runs E from C $\frac{1}{4}$ .
- 1916 D.H. Vaughan sets  $\frac{1}{4}$  bet 27 and 28 in center of road.
- 1973 J.C. Kirby indicates an iron pipe at the corner.
- 1973 Department of Transportation sets a 3" Brass capped pipe in center of highway, set reference monuments, Brass capped which I recovered and are shown below.
- 1987 I found D.O.T. Capped monument

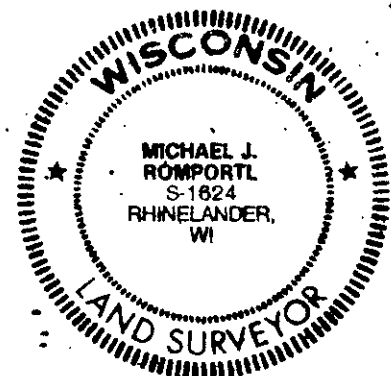
(c) (d) (e) Plan view of corner with ties to at least 4 witness monuments. If in disagreement with previously established corner, show the distances between the two corners and also indicate the ties to the disputed corner.



(i) I, Michael J. Romportl  
 (type or print name) certify that the corner location on this record was determined by me or under my direction and control and that this U.S. Public Land Survey Monument Record is correct and complete to the best of my knowledge and belief.

Michael J. Romportl 12/2/87  
 Signature Date

GENISOT & ASSOCIATES INC.  
 1512 EAGLE ST., RHINELANDER, WIS.



Index No. 1-13

**FILED**  
SEP 17 1999

At \_\_\_\_\_  
THOMAS H. LEIGHTON  
REGISTER OF DEEDS

This form is intended to fulfill the requirements of Chapter A-E 7.08 (3)(a) thru (i) U.S. Public Land Survey Monument Location Record, Wisconsin Administrative Code. Use the reverse side of form for continuation.

**U.S. PUBLIC LAND SURVEY MONUMENT LOCATION RECORD**

USPLS CORNER: West 1/4 Corner SECTION: 27 TOWNSHIP: 37 NORTH RANGE: 10 East  
 NAME OF WATERWAY FOR M.C. CORNER : N/A SECTION LINE: N/A  
 (CITY)(VILLAGE)(TOWN) OF: Town of Stella COUNTY OF: Oneida

Description of monument found or placed and all other evidence used as the basis for monument location; including monuments and related measurements required if the corner location was reestablished by lost corner proportionate methods. Also indicate name of original surveyor, original survey date and the corner monument, bearing trees, witness or other reference monuments established; including measured bearing and distance ties, from available records.

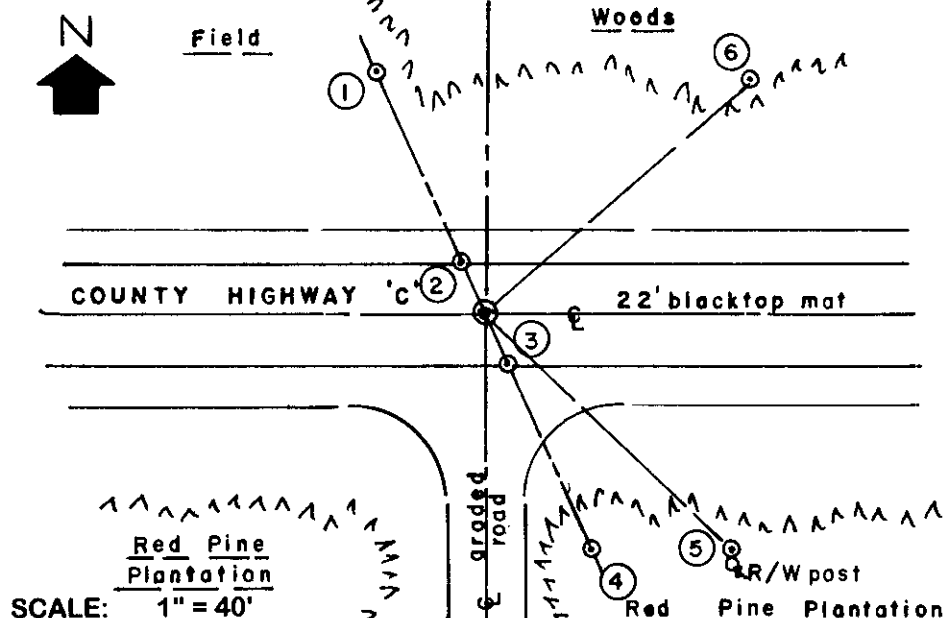
I reset the corner with a 1/2" mean dia. by 4.5" long tapered stainless steel cotton gin pin, with a bevel gear at top, flush with the existing blacktop pavement surface and marked it with an orange paint keel cross, in accord with a previous corner location record filed by Michael J. Romportl, RLS 1624, dated December 12, 1987, in Oneida County records, at his request and approval; please refer to such location record for previous corner recovery history.

I found record concrete reference monuments with standard Wis DOT stamped cap/tablet in top as noted for new ties below, excepting the NE monument location which now falls in a shallow ditch and believed lost. All concrete reference monuments found undisturbed with top from 2" to 5" below existing grade. Reference monument at (5) falls 2' North of a standard yellow painted wood R/W post. Corner falls at juncture of highway centerline East/West and dirt road South.

With transit on reference monument at (4), I reset corner by proportion on right line to reference monument (1) and also set a 1/4" dia. by 2.5" long PK nail flush in north and south edge of blacktop pavement. All magnetic compass bearings compared with record bearings to nearest degree. The corner location fell directly above a strong magnetic locator reading refined to a circular radius of 0.10 feet, so I did not elect to chisel out a hole thru existing blacktop pavement; and measurement between reference monuments at each end of the right line of record compared within 0.10 feet for single proportionment purposes.

I set a standard white poly 'T' marker post 8" North of reference monument at (4) and 8" South of reference monument at (1). This recovery completed July 28, 1999; there were no direct witnesses other than several vehicle drive-bys.

Plan view map of monument location with bearing and distance ties to a minimum of four(4) described witness or reference monuments of concrete, natural stone, iron, live bearing trees or equivalent material. If applicable, also show a minimum of two(2) bearing and distance ties to any other monument found and not accepted; including the bearing and distance from the accepted monument.

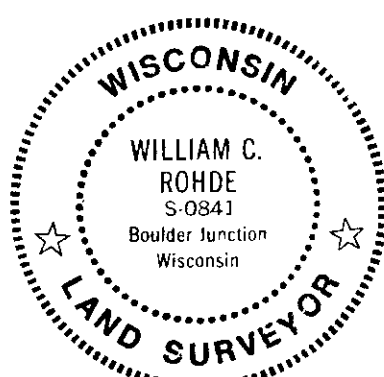


- WITNESS MONUMENT TIES:**
- (1) Concrete monument found with standard WIS DOT cap N24°W 55.49'.
  - (2) PK nail set in North edge of road pavement N24°W 11.56'.
  - (3) PK nail set in South edge of road pavement S24°E 12.84 feet.
  - (4) Concrete monument found with standard Wis DOT cap S24°E 55.39'.
  - (5) Concrete monument found with standard Wis DOT cap S45°E 71.92'.
  - (6) New BT 17" Pr N49°E 74.02'.

SCALE: 1" = 40'

Unless otherwise indicated, all bearing tree ties are to a .25" dia. by 2.5" long PK nail with a 1.25" dia. steel washer driven into unblazed right face and a .25" dia. by 2.5" long PK nail with a 2" dia. steel washer stamped BT is also driven into unblazed face of bearing tree at DBH; the basis for measured bearings is by compass to nearest degree and all tie distances are measured horizontal by steel tape corrected to nearest 1/100th feet at standard temperature of 68° F.

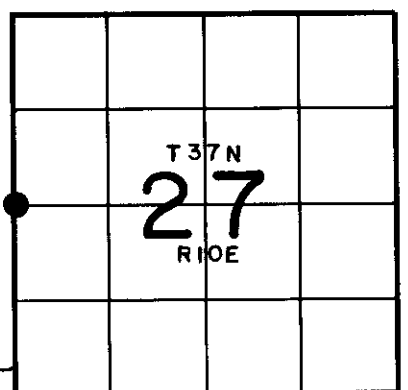
RLS SEAL:



**LAND SURVEYOR CERTIFICATE:**

I, William C. Rohde, hereby certify that I am duly licensed as a Professional Land Surveyor in the State of Wisconsin; that this USPLS monument location was determined by me and/or under my direct supervision and control; and that this U.S. Public Land Survey Monument Location Record is true and correct to the best of my knowledge and belief.

Signed: *William C. Rohde*  
William C. Rohde RLS 841



SECTION LOCATION MAP

INDEX NO. T 13

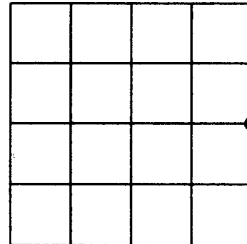
3710282000

**U.S. PUBLIC LAND SURVEY MONUMENT RECORD**

Note: This form is intended and designed to fulfill all requirements of the Wisconsin Administrative Code, Chapter A-E 7.08 U.S. Public Land Monument Record (3)(a)(b)(c)(d)(e)(f)(g)(h)(i).  
An additional sheet may be added if necessary to conform with said requirements.

(a) CORNER LOCATION: Oneida County Corner I.D. No.:

East 1/4 Corner, Sec. 28 3710282000  
Township 37 North  
Range 10 East  
Town of Stella  
County of Oneida



SECTION 28

(f)(g)(h) DESCRIPTION OF MONUMENT FOUND AT THIS CORNER AND IF IT WAS ACCEPTED, STATE ALL EVIDENCE (MATERIAL, TESTIMONIAL, OCCUPATIONS, PLATS, RECORDS, OTHER MONUMENTS) USED AS A BASIS FOR ESTABLISHING LOCATION. IF NOT ACCEPTED OR IF NOTHING WAS FOUND, STATE EVIDENCE USED AS BASIS FOR ESTABLISHING LOCATION. IF REESTABLISHED THROUGH LOST CORNER PROPORTIONATE METHODS, INDICATE ALL MONUMENTS, DISTANCES AND DIRECTIONS USED TO ESTABLISH. INDICATE TYPE OF MONUMENT AND SIGN POST FOUND OR SET.

SEPTEMBER 6, 1999 - STAINLESS STEEL COTTON GIN SPIKE WITH BEVELED GEAR AT TOP SET BY BILL ROHDE. SEE PREVIOUS MONUMENT LOCATION RECORDS FOR RECORDED BEARINGS AND DISTANCES.

JUNE 3, 2011 - A.R. JONES FOUND SPIKE AS CALLED FOR AND ALL WITNESS CORNERS ARE IN PLACE AS DESCRIBED ON ROHDE MONUMENT RECORD AND RE-TIED FOR PRE-CONSTRUCTION RECORD.

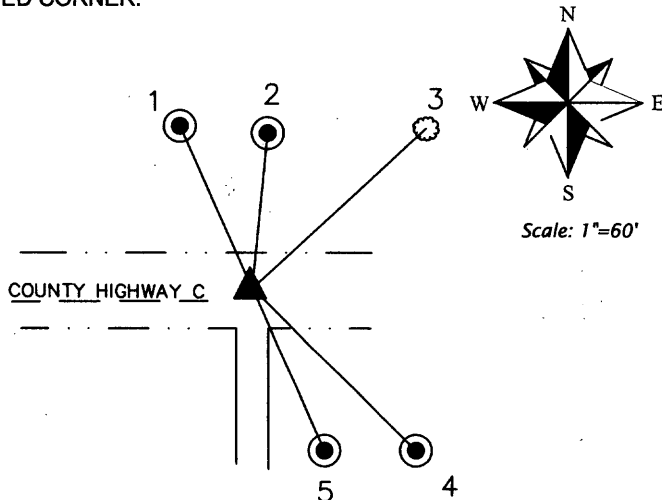
NOVEMBER 4, 2011-A.R. JONES SET PK NAIL AT CORNER LOCATION BASED ON ROHDE MONUMENT RECORD AFTER RE-CONSTRUCTION OF HWY C OBLITERATED EXISTING CORNER.

(c)(d)(e) PLAN VIEW OF CORNER WITH TIES TO AT LEAST 4 WITNESS MONUMENTS. IF IN DISAGREEMENT WITH PREVIOUSLY ESTABLISHED CORNER, SHOW THE DISTANCE BETWEEN THE TWO CORNERS AND ALSO INDICATE THE TIES TO THE DISPUTED CORNER.

BEARINGS BASED ON MEASURED LINE BETWEEN WITNESS CORNERS 1 AND 5

WITNESS MONUMENT TIES:

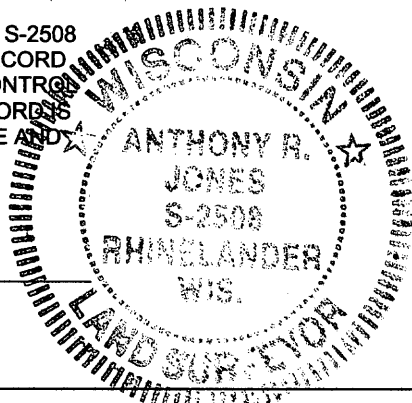
- 1: FOUND ALUMINUM MON. IN CONCRETE  
N 24°00'00" W, 55.54'
- 2: FOUND ALUMINUM MON. IN CONCRETE  
N 5°44'23" E, 48.72'
- 3: FOUND NAIL IN 24" RED PINE, 3.7'  
FROM GROUND LEVEL  
N 47°26'14" E, 73.55'
- 4: FOUND ALUMINUM MON. IN CONCRETE  
S 45°19'42" E, 71.93'
- 5: FOUND ALUMINUM MON. IN CONCRETE  
S 24°00'00" E, 55.39'



(I) I, ANTHONY R. JONES, REGISTERED LAND SURVEYOR NO. S-2508 HEREBY CERTIFY THAT THE CORNER LOCATION ON THIS RECORD WAS DETERMINED BY ME OR UNDER MY DIRECTION AND CONTROL AND THAT THIS U.S. PUBLIC LAND SURVEY MONUMENT RECORD IS CORRECT AND COMPLETE TO THE BEST OF MY KNOWLEDGE AND BELIEF.

*Anthony R. Jones*  
SIGNATURE

11/4/11  
DATE



INDEX NO. T-13

3710282000