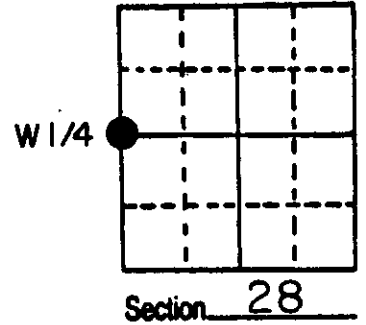


# U.S. PUBLIC LAND SURVEY MONUMENT RECORD

Note: This form is intended and designed to fulfill all requirements of Wisconsin Administrative Code, Chapter A-E 5.02, U.S. Public Land Survey Monument Record (3) (a) (b) (c) (d) (e) (f) (g) (h) (i). An additional sheet may be added if necessary to conform with said requirements.

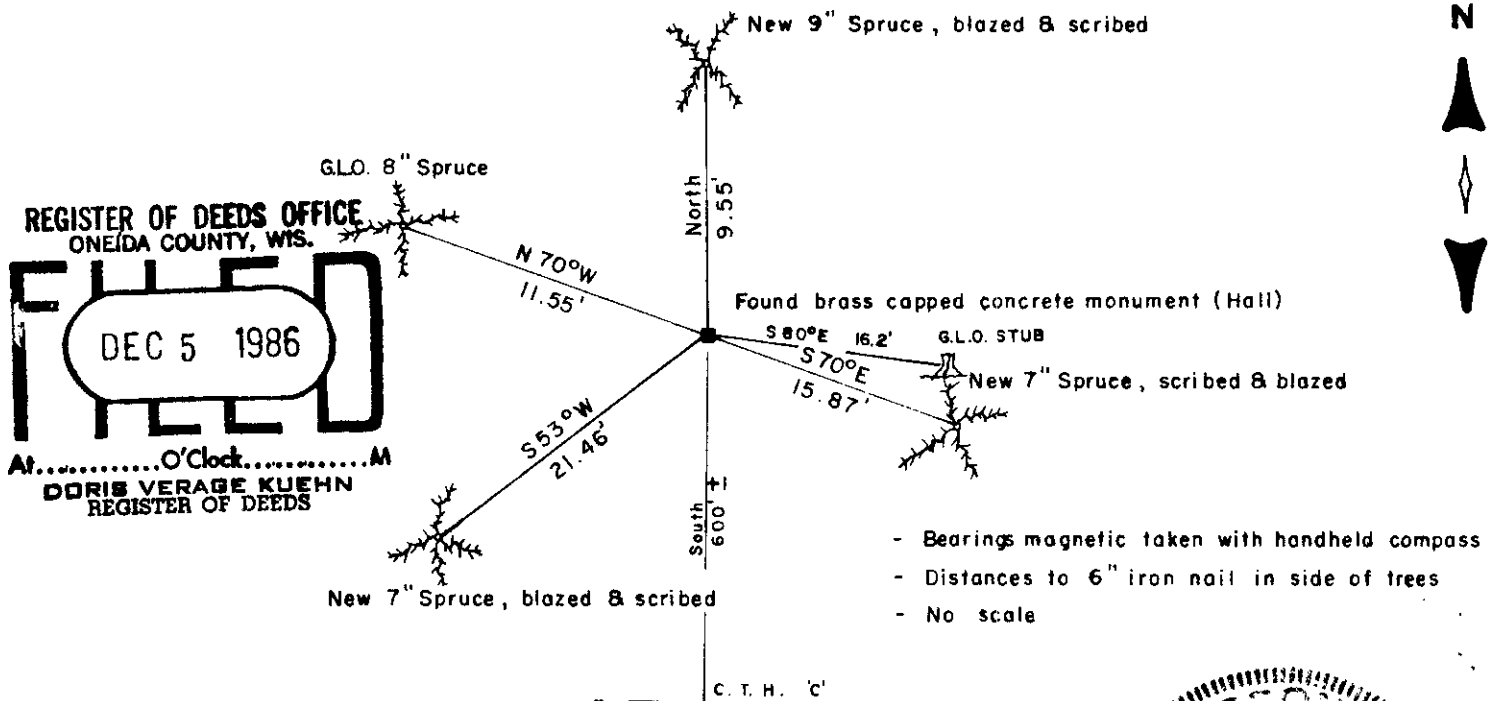
(a) Corner location: Township 37 North  
 Range 10 East/West  
 Town/City/Village STELLA  
 County ONEIDA



(b) (f) (g) (h) Description of monument found at this corner and if it was accepted, state all evidence (material, testimonial, occupational, plats, records, other monuments) used as a basis for accepting. If not accepted or if nothing was found, state evidence used as basis for establishing location. If reestablished through lost corner proportionate methods, indicate all monuments, distances and directions used to establish.

- 1863- W.E. Daugherty Established original corner @ 40.00ch. north of corner to 28,29,32,33: B.T.s Spruce 7 N60°W 68lks.
- 1899- B.F. Dorr ran south from N.W. cor 28 40.94ch. and found original stump and stake, new B.T. Spruce 5 N54°W 243/4lks.
- 1933- H.C. Hall found original corner position and set a concrete monument stamped Orig. 1/4s Cor.; Hall S 29|S28 1933; T37N R10E.
- 1953- Hugh B Crawford found Halls monument while doing a dependent resurvey of Sec. 29 for the Bureau of Land Management and made new B.T.s : Spruce 4 N73 1/2° W 17 1/2lks., Spruce 4 s80 1/2° E 24 1/2lks.
- 1986- I found Halls monument and the B.L.M.s B.T.s and witnessed the corner as shown below.

(c) (d) (e) Plan view of corner with ties to at least 4 witness monuments. If in disagreement with previously established corner, show the distances between the two corners and also indicate the ties to the disputed corner.

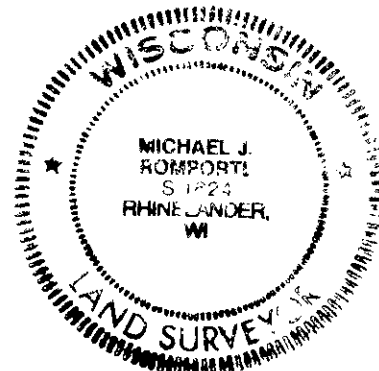


(i) I, MICHAEL J. ROMPORTL R.L.S. 1624

(type or print name) certify that the corner location on this record was determined by me or under my direction and control and that this U.S. Public Land Survey Monument Record is correct and complete to the best of my knowledge and belief.

Michael J Romportl Nov. 26, 1986  
 Signature Date

GENISOT & ASSOCIATES INC.  
 1512 EAGLE ST., RHINE, WI.



Index No. 79

3710292000