

# U.S. PUBLIC LAND SURVEY MONUMENT RECORD

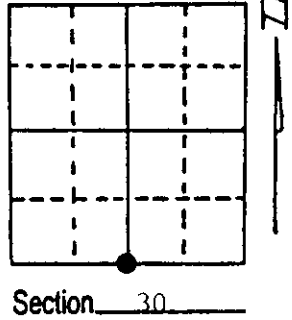
**Note:** This form is intended and designed to fulfill all requirements of Wisconsin Administrative Code, Chapter A-E 7.08 U.S. Public Land Survey Monument Record (3) (a) (b) (c) (d) (e) (f) (g) (h) (i). An additional sheet may be added if necessary to conform with said requirements.

(a) Corner location: Township 37 North

Range 10 East ~~West~~

Town/City/Village Stella

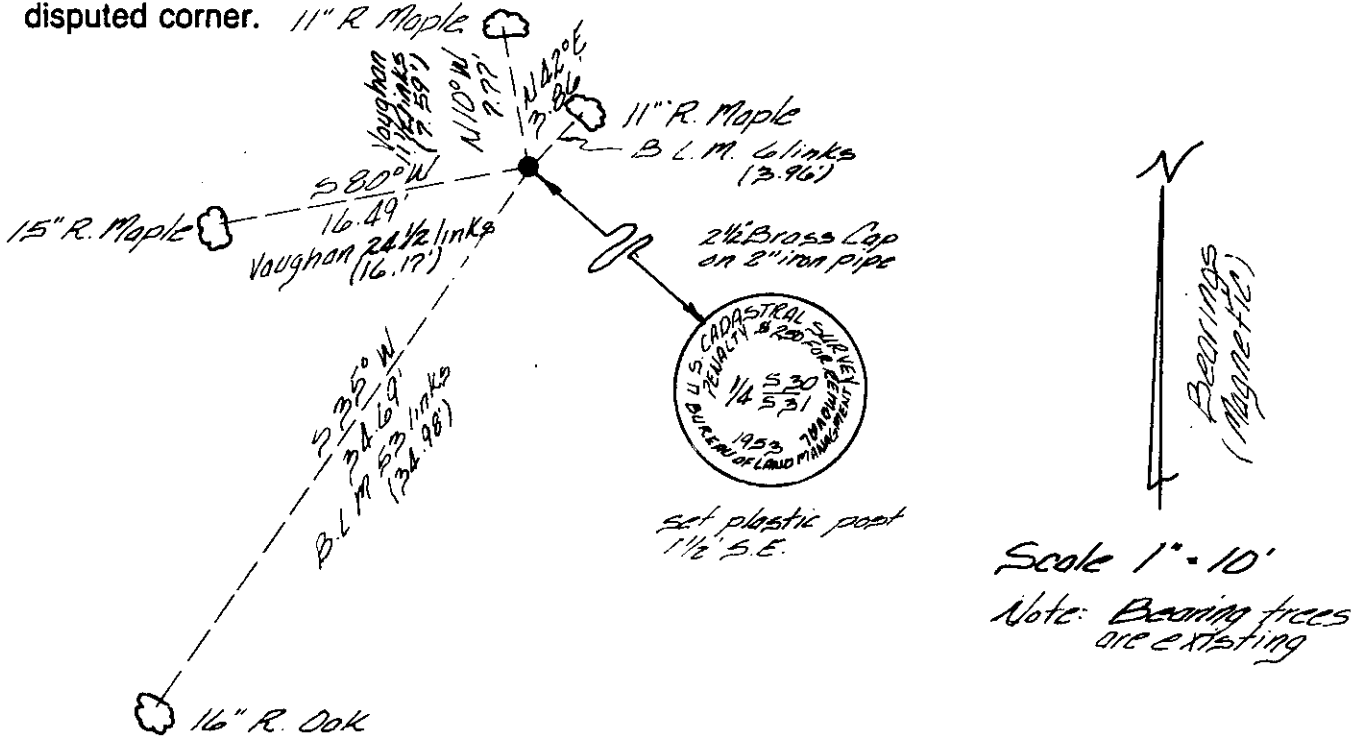
County Oneida County



(b) (f) (g) (h) Description of monument found at this corner and if it was accepted, state all evidence (material, testimonial, occupational, plats, records, other monuments) used as a basis for accepting. If not accepted or if nothing was found, state evidence used as basis for establishing location. If reestablished through lost corner proportionate methods, indicate all monuments, distances and directions used to establish.

- 1863 William Dougherty, Deputy Surveyor, Set  $\frac{1}{4}$  Section Post; Bearing trees; 6" Birch, S30°E, 9 links; 12" Birch N86°W 31 links
- Dec 31, 1912 D. H. Vaughan, County Surveyor, 42.83 $\frac{1}{2}$  chains East of SW Section Corner and 33.60 $\frac{1}{2}$  chains West of Meander Corner Set  $\frac{1}{4}$  Corner to Section 30 and 31. Bearing trees; made 8" Sugar N9 $\frac{1}{2}$ °W, 11 links; 10" Sugar, S82 $\frac{1}{2}$ °W, 24 links.
- July 1953 Hugh Crawford, Cadastral Engineer, 40.79 chains found a 1 $\frac{1}{2}$ " dia. iron pipe marking the  $\frac{1}{4}$  Corner Sections 30 and 31. Set 2 $\frac{1}{2}$ " dia. Brass Cap monument up 6" marked S30-S31, 1953. Made Bearing trees; 8" maple N43°E 6 links, 10" Maple S34 $\frac{1}{2}$ °W 53 links. Reset the pipe West and along side the new monument.
- Aug. 25, 1988 James D. Rein, Surveyor found 2 $\frac{1}{2}$ " Brass Cap on 2" iron pipe up 5" Stamped as shown, Existion Bearing trees 11" R. Maple N10°W, 7.77 feet (Vaughan); 15" Maple S90°W, 16.49 feet (Vaughan); 16" Oak S35°W, 34.69 feet (BLM); 11" Maple N42°E, 3.86 feet (BLM).

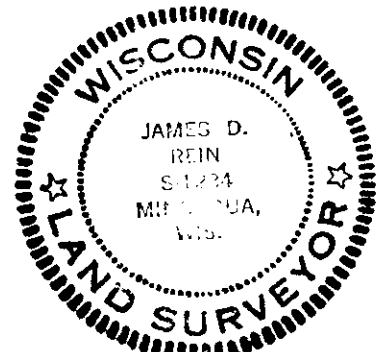
(c) (d) (e) Plan view of corner with ties to at least 4 witness monuments. If in disagreement with previously established corner, show the distances between the two corners and also indicate the ties to the disputed corner.



(i) I, James D. Rein, RLS No. S-1234  
 (type or print name) certify that the corner location on this record was determined by me or under my direction and control and that this U.S. Public Land Survey Monument Record is correct and complete to the best of my knowledge and belief.

James D. Rein Signature August 19th, 1988  
 Date

Scale 1" = 10'  
 Note: Bearing trees are existing



3710300020

Index No. 1-3