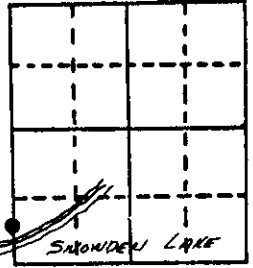
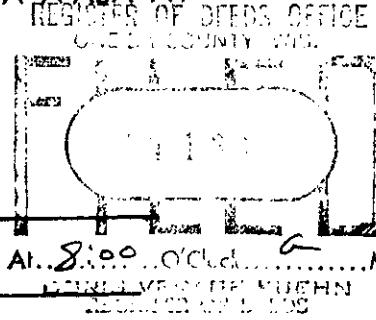


U.S. PUBLIC LAND SURVEY MONUMENT RECORD

Note: This form is intended and designed to fulfill all requirements of Wisconsin Administrative Code, Chapter A-E 5.02, U.S. Public Land Survey Monument Record (3) (a) (b) (c) (d) (e) (f) (g) (h) (i). An additional sheet may be added if necessary to conform with said requirements.

(a) Corner location: Township 37 North
 Range 10 East/West
 Town/City/Village Stella
 County Oneida

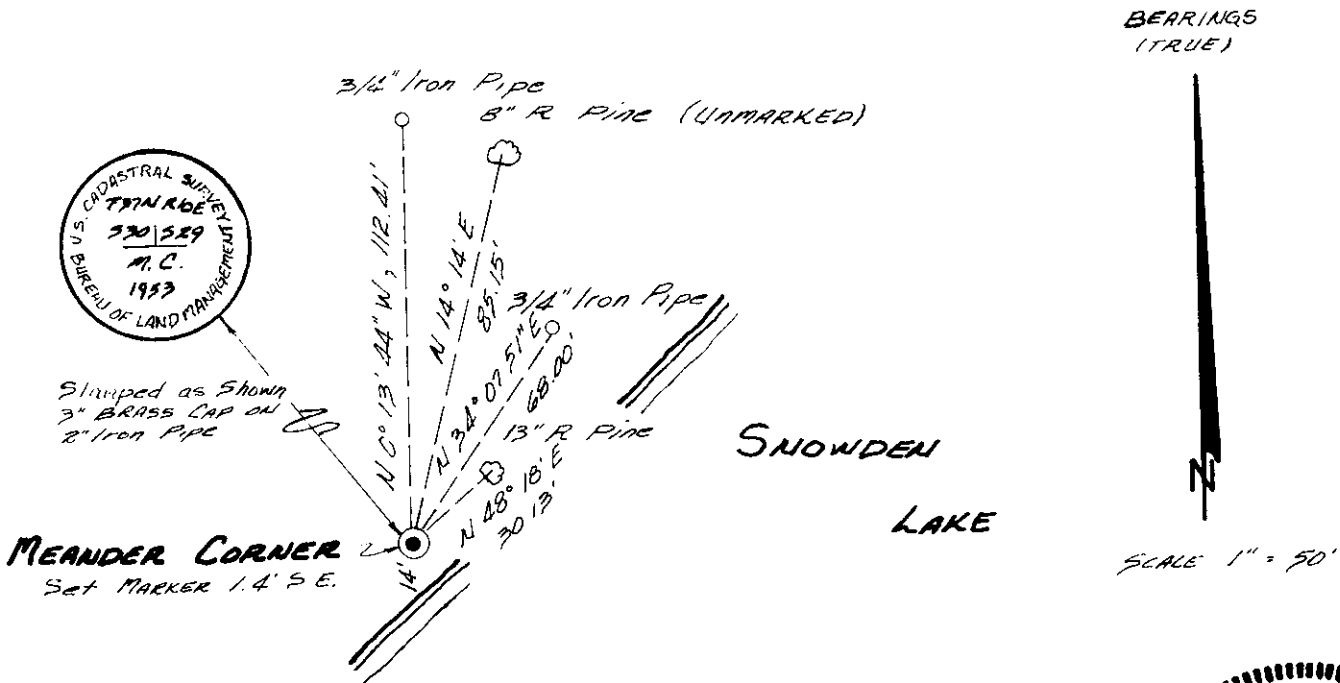


Section 29

(b) (f) (g) (h) Description of monument found at this corner and if it was accepted, state all evidence (material, testimonial, occupational, plats, records, other monuments) used as a basis for accepting. If not accepted or if nothing was found, state evidence used as basis for establishing location. If reestablished through lost corner proportionate methods, indicate all monuments, distances and directions used to establish.

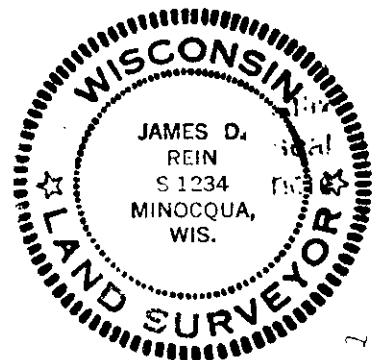
August 1863 - William E. Dougherty Deputy Surveyor - Set Meander Post. Original B.T.'s: Birch 10" N34°E, 21 lks; Aspen 10" N55°W, 27 lks.
 July-August 1953 - Hugh B. Crawford, Cadastral Engineer - Set iron post 2" dia. 30" long, 28" in ground, with brass cap. Made B.T.'s: Norway Pine 10" N48°E, 46½ lks; Elm 20" N36½°W, 47 lks.
 August 5th, 1987 - James D. Rein, Registered Land Surveyor # S-1234. Found BLM brass capped 2" dia. iron pipe. Existing B.T.'s: 13" Red Pine N48°E, 30.23 feet; 25" Elm (stp) N36°W, 30 feet.
 Set plastic post by corner monument and made new ties as shown below.

(c) (d) (e) Plan view of corner with ties to at least 4 witness monuments. If in disagreement with previously established corner, show the distances between the two corners and also indicate the ties to the disputed corner.



(i) I, James D. Rein, Registered Land Surveyor No. S-1234
 (type or print name) certify that the corner location on this record was determined by me or under my direction and control and that this U.S. Public Land Survey Monument Record is correct and complete to the best of my knowledge and belief.

James D. Rein August 11th, 1987
 Signature Date



Index No. UV-5

3710300300

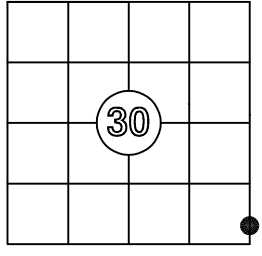
US PUBLIC LAND SURVEY MONUMENT RECORD

Per Wis. Admin. Code § A-E 7.08, a U.S. public land survey monument record shall be prepared and filed with the county survey records as part of any land survey within 60 days of setting or accepting the corner, which includes or requires the perpetuation, restoration, or use of a U.S. public land survey corner and when any of the situations in Wis. Admin. Code § A-E 7.08(1)(a), (b) or (c) arise.

3(a) Corner Identification:
 Found brass cap
 Meander Corner-north shore of Snowden Lake
 Section 30
 Township 37 North
 Range 10 East
 4th Principal Meridian
 Town of Stella
 Oneida Co., WI

Observed Coordinates:
 N: 172585.99
 E: 296801.32
 Datum: NAD83(2011)
 GNSS Control: WISCRS NETWORK
 GNSS Method: RTK-Direct
 Verification Method: 2

CORNER ID:
3710300300



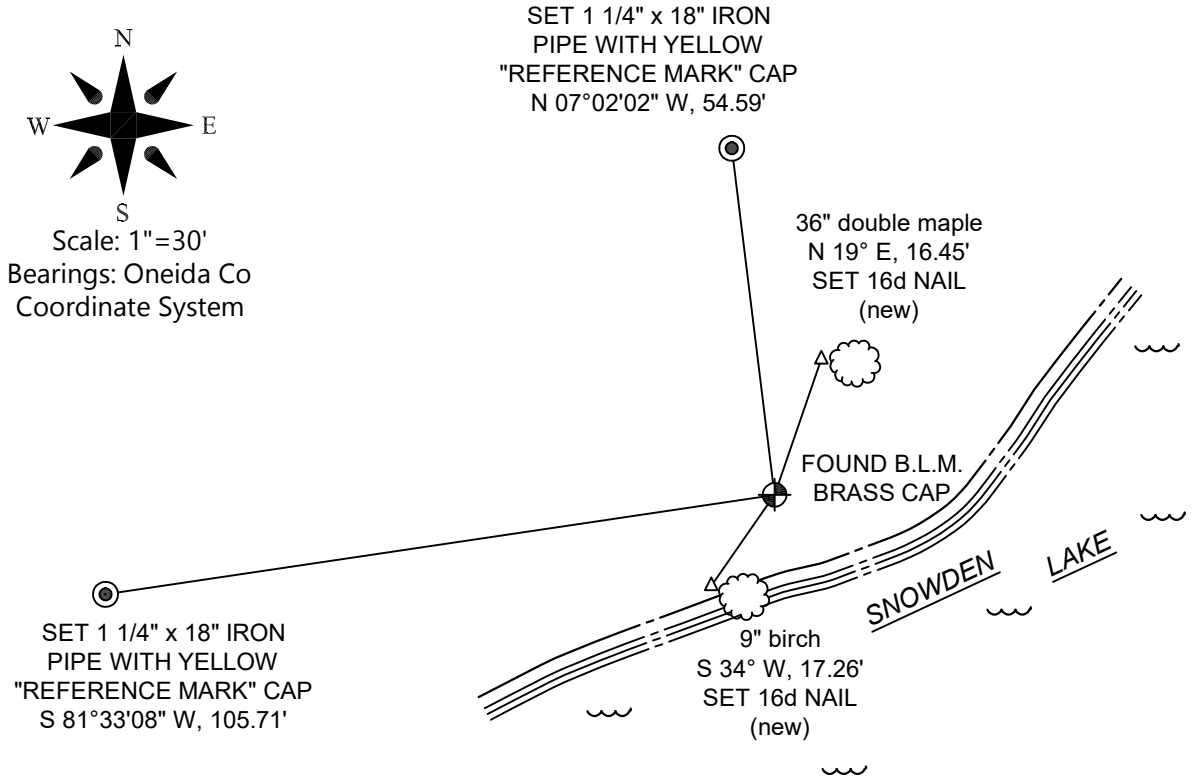
Establishment of Original Corner
 Corner Set: wood post
 Original Surveyor: Wm. Daugherty
 Date of Survey: August, 1863
 Birch 10", N 34° E, 21 lks
 Aspen 10", N 55° W, 27 lks

The coordinate value has been verified by at least one of the following methods:

1. Comparison to a previously determined GNSS determined published value;
2. The value is the average of two or more GNSS observations at markedly different times;
3. One or more distances were measured to the corner from offset GNSS observed locations, set and observed per No. 2 methods.

3(b)((c)(d)(f)(g)(h))

- This is a continuation of a previous USPLSS Monument Records by Surveyor James Rein, S-1234 (1987).
- 8/11/1987 - James Rein, S-1234, finds the B.L.M. brass cap and made new ties.
- 3/1/1996 - James Rein, S-1234, finds the brass cap.
- 5/7/1997 - James Rein, S-1234, finds the brass cap.
- 10/15/2023 - Charles Oleinik, S2439, finds the brass cap.
- 8/30/2025 - I, Anthony Jones, S-2508, found the B.L.M. brass cap set by Hugh Crawford, Cadastral Engineer, in 1953, in good condition, flush with the ground and stamped to identify the location. Rein's 13" red pine, N 48° 18' W, 30.13' is lying in the lake. I found both 3/4" iron pipes and the 8" red pine, but there is a woven wire fence and underbrush in front of all three and I could not verify the dimensions. I, therefore, made four new witnesses, as shown below. The white guard post is gone and I did not set a new one, as it is in a yard.



3(i) I, Anthony R. Jones, Wisconsin Professional Land Surveyor No S-2508, hereby certify that the corner location shown on this record was determined by me, and that this U.S. Public Land Survey Monument Record is correct and complete to the best of my knowledge and belief.

