

U.S. PUBLIC LAND SURVEY MONUMENT RECORD

Note: This form is intended and designed to fulfill all requirements of Wisconsin Administrative Code, Chapter A-E 5.02, U.S. Public Land Survey Monument Record (3) (a) (b) (c) (d) (e) (f) (g) (h) (i). An additional sheet may be added if necessary to conform with said requirements.

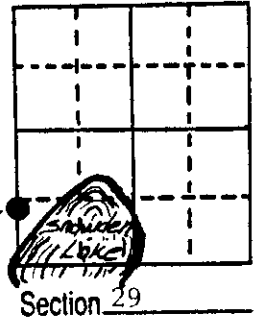
(a) Corner location: Township 37 North

Range 10 East/West

Town/City/Village Stella

County Oneida

MEANDER CORNER
West line of Section
29 between Gov't Lots
4 and 5.



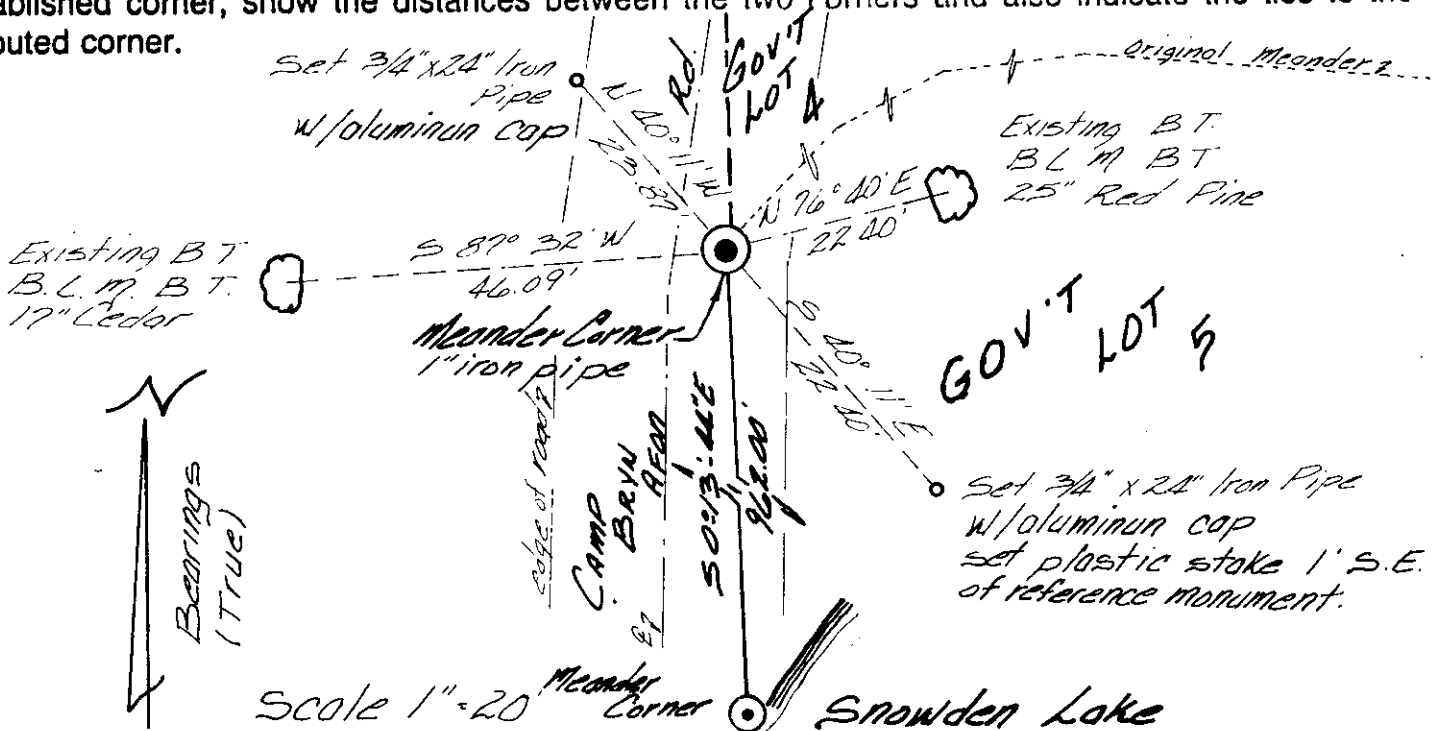
(b) (f) (g) (h) Description of monument found at this corner and if it was accepted, state all evidence (material, testimonial, occupational, plats, records, other monuments) used as a basis for accepting. If not accepted or if nothing was found, state evidence used as basis for establishing location. If reestablished through lost corner proportionate methods, indicate all monuments, distances and directions used to establish.

July 1953 - Hugh B. Crawford (Cadastral Engineer) 19.515 chains Point for the original Meander Corner of Sections 29 and 30, at record distance from the Corner of Sections 19, 20, 29 and 30. Set iron post, 2½ dia, 30" long, 33" in the ground, with brass cap. From which a 24" Norway Pine N76°E, 34 links; 10" Cedar S88°W, 69½ links.

May 1975 - H. Behn, RLS - Shows corner position being remonumented by 1¼" dia iron pipe, referenced by a 24" N. Pine N76°50E, 21.34 feet and by a 15" Cedar S88°02W, 45.57 feet.

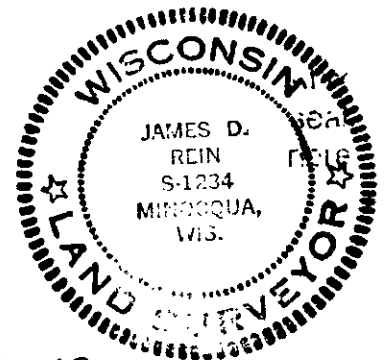
January 16, 1988 - James D. Rein, RLS - Recovered 1" dia iron pipe flush in pavement of Camp Bryn Afon Road; Existing GLO bearing trees 25" Red Pine N76°40E, 22.40 feet and a 17" Cedar S87°32W, 46.09 feet. Set capped aluminum iron pipes as shown below in plan view. Note: Bearing tree distance measurements made to aluminum nails.

(c) (d) (e) Plan view of corner with ties to at least 4 witness monuments. If in disagreement with previously established corner, show the distances between the two corners and also indicate the ties to the disputed corner.



(i) I, James D. Rein, Registered Land Surveyor No. S-1234
(type or print name) certify that the corner location on this record was determined by me or under my direction and control and that this U.S. Public Land Survey Monument Record is correct and complete to the best of my knowledge and belief.

James D. Rein January 16th, 1988
Signature Date



3710300900

Index No. V-V-5 (Geo me)

US PUBLIC LAND SURVEY MONUMENT RECORD

Per Wis. Admin. Code § A-E 7.08, a U.S. public land survey monument record shall be prepared and filed with the county survey records as part of any land survey within 60 days of setting or accepting the corner, which includes or requires the perpetuation, restoration, or use of a U.S. public land survey corner and when any of the situations in Wis. Admin. Code § A-E 7.08(1)(a), (b) or (c) arise.

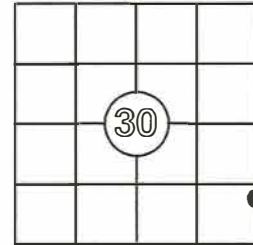
3(a) Corner Identification:

Set 5" gear spike
Original MC location
Section 30
Township 37 North
Range 10 East
4th Principal Meridian
Town of Stella
Oneida Co., WI

Observed Coordinates:

N: 173548.05
E: 296793.57
Datum: NAD83(2011)
GNSS Control: WISCRS NETWORK
GNSS Method: RTK-Direct
Verification Method: 2

CORNER ID:
3710300900



Establishment of Original Corner

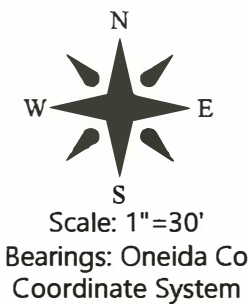
Corner Set: wood post
Original Surveyor: Wm. Daugherty
Date of Survey: August, 1863
Birch 10", N 34° E, 21 lks
Aspen 10", N 55° W, 27 lks

The coordinate value has been verified by at least one of the following methods:

1. Comparison to a previously determined GNSS determined published value;
2. The value is the average of two or more GNSS observations at markedly different times;
3. One or more distances were measured to the corner from offset GNSS observed locations, set and observed per No. 2 methods.

3(b)(c)(d)(f)(g)(h)

- This is a continuation of a previous USPLSS Monument Records by Surveyor James Rein, S-1234 (1988).
- 1/6/1988 - James Rein, S-1234, finds the B.L.M. iron pipe and existing ties. He made new ties.
- 3/17/2006 - Todd Loftus, S-1523, finds a "subdivisional mon of record".
- 11/2/2025 - I, Anthony Jones, S-2508, found an unidentifiable iron marker 2" below the surface of Camp Bryn Afon Rd. I could not tell if it was an iron rod, railroad spike or bent iron pipe/tipped, without digging a huge hole in the blacktop. I found both of Rein's aluminum capped monuments in good condition, so I measured between them and set a 5" gear spike at the proportionate distance, as shown on Rein's USPLSS Monument Record. The iron marker. The B.L.M 25" red pine is gone and the 17" cedar is 10' below the level of the road, so I could not get an accurate measurement. I set two new witnesses, as shown below. There is a scrivener's error on Rein's monument record. I contacted him and he sent me a copy of the original notes. His record distance from the iron pipe to the southeast aluminum capped iron pipe should be 33.20', not 22.40'.



FOUND ALUMINUM CAP
N 40°26'44" W, 23.96'

SET 5"
GEAR SPIKE

SET 1 1/4" x 18" IRON
PIPE WITH YELLOW
"REFERENCE MARK" CAP
N 19°02'11" E, 32.42'

driveway for 4118
Camp Bryn Afon Rd

FOUND ALUMINUM CAP
WITH WHITE GUARD
POST, 1" S.E.
S 40°26'44" E, 33.32'

SET 1 1/4" x 18" IRON
PIPE WITH YELLOW
"REFERENCE MARK" CAP
S 18°49'12" W, 74.48'

CAMP BRYN

B.L.M. MEANDER CORNER
FOUND BRASS CAP
S 00°27'41" E, 962.09'

3(i) I, Anthony R. Jones, Wisconsin Professional Land Surveyor No S-2508, hereby certify that the corner location shown on this record was determined by me, and that this U.S. Public Land Survey Monument Record is correct and complete to the best of my knowledge and belief.