

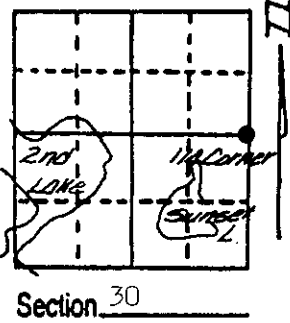
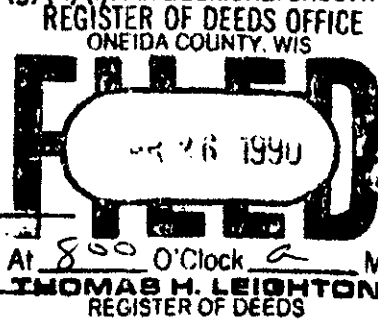
U.S. PUBLIC LAND SURVEY MONUMENT RECORD

Note: This form is intended and designed to fulfill all requirements of Wisconsin Administrative Code, Chapter A-E 7.08 U.S. Public Land Survey Monument Record (3) (a) (b) (c) (d) (e) (f) (g) (h) (i). An additional sheet may be added if necessary to conform with said requirements.

(a) Corner location: Township 37 North
 Range 10 East/West

Town/City/Village Stella

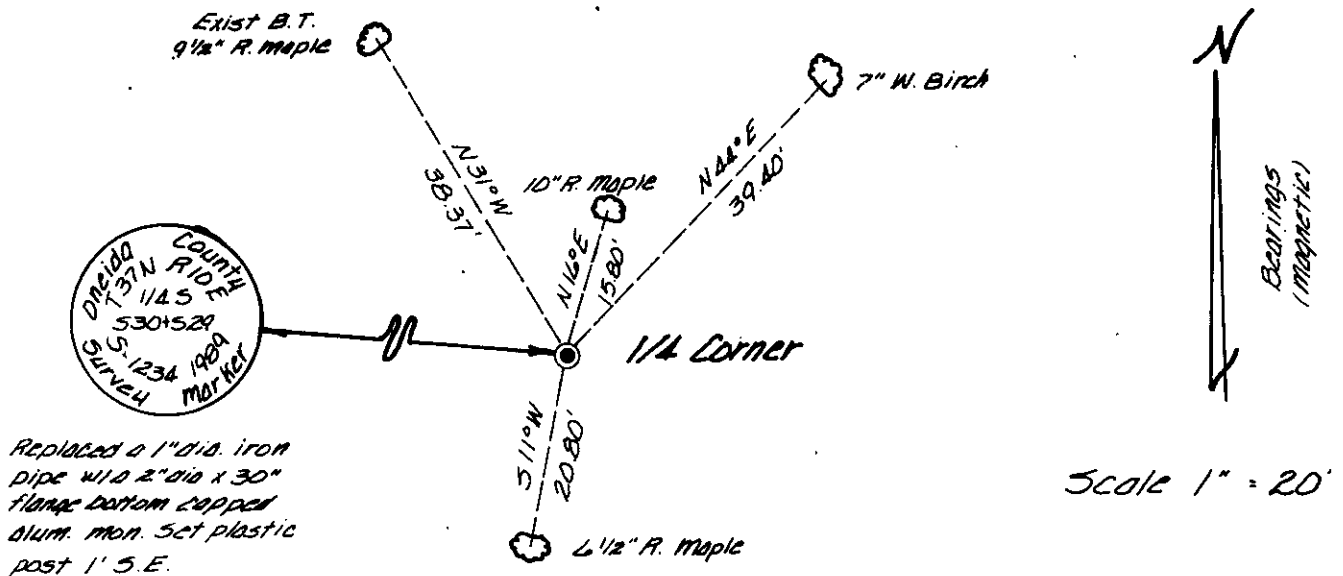
County Oneida



(b) (f) (g) (h) Description of monument found at this corner and if it was accepted, state all evidence (material, testimonial, occupational, plats, records, other monuments) used as a basis for accepting. If not accepted or if nothing was found, state evidence used as basis for establishing location. If reestablished through lost corner proportionate methods, indicate all monuments, distances and directions used to establish.

- 1863 - W. Daugherty, Deputy Surveyor, set 1/4 section post. Bearing trees: 6" Tamarack, N38°E, 136 links; 8" Spruce, N88°W, 17 links.
- July 1953 - Hugh B. Crawford, Cadastral Surveyor, proportioned corner position but no corner was set.
- May 1975 - Harold Behn, Registered Land Surveyor, monumented 1/4 corner position by using BLM resurvey as shown on map #7, file #29-3710, by Wilderness Surveying Inc. Bearing trees: 6" Soft Maple, N28°W, 38.0'; 12" W. Birch, N32°E, 30.7'.
- Aug 17, 1989 - James D. Rein, Registered Land Surveyor, recovered a 1" iron pipe. Existing Bearing trees: 9 1/2" R. Maple, N31°W, 38.37'. Replaced 1" iron pipe with an alum. capped 2" dia x 30" flange bottom Oneida County Monument. Set plastic post 1' SE. See sketch below for addition bearing tree ties.

(c) (d) (e) Plan view of corner with ties to at least 4 witness monuments. If in disagreement with previously established corner, show the distances between the two corners and also indicate the ties to the disputed corner.



(i) I, James D. Rein RLS No. 1234
 (type or print name) certify that the corner location on this record was determined by me or under my direction and control and that this U.S. Public Land Survey Monument Record is correct and complete to the best of my knowledge and belief.



James D. Rein Signature
 August 28th, 1989 Date

Index No. T-5