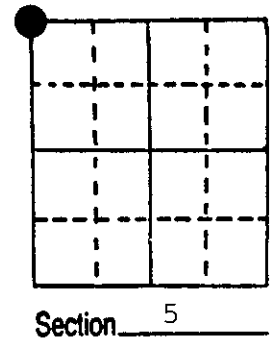


U.S. PUBLIC LAND SURVEY MONUMENT RECORD

Note: This form is intended and designed to fulfill all requirements of Wisconsin Administrative Code, Chapter A-E 5.02, U.S. Public Land Survey Monument Record (3) (a) (b) (c) (d) (e) (f) (g) (h) (i). An additional sheet may be added if necessary to conform with said requirements.

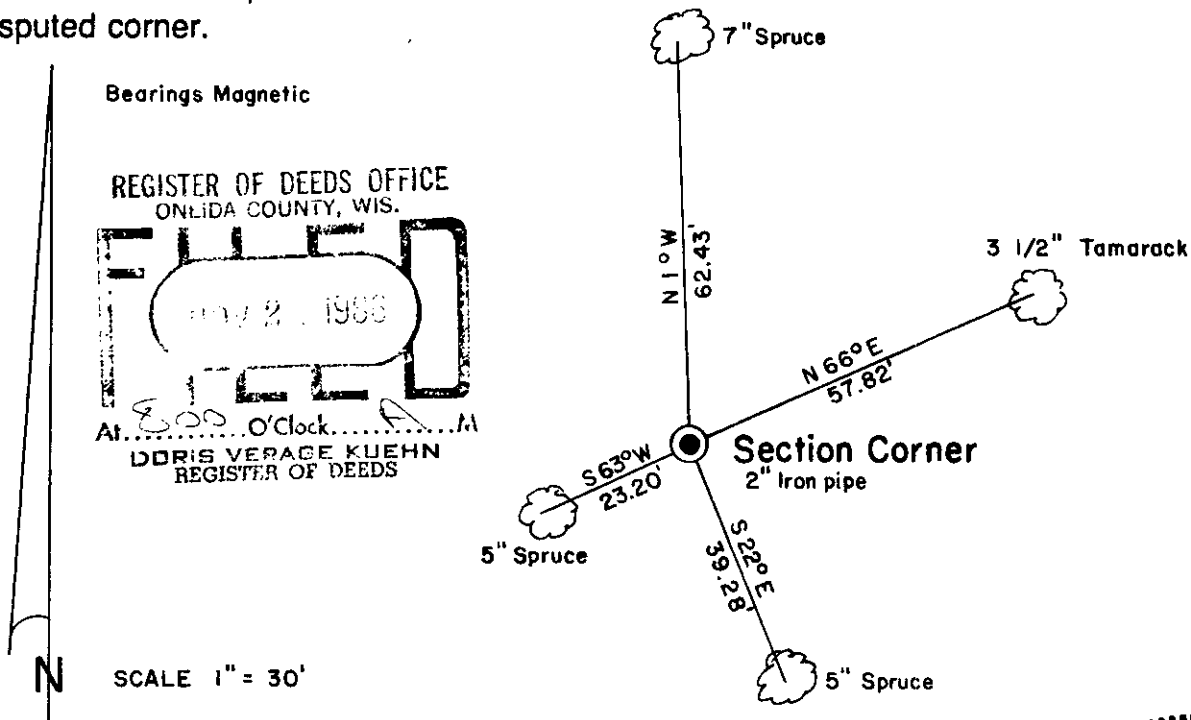
(a) Corner location: Township 36 North
 Range 10 East/West
 Town/City/Village Stella
 County Oneida



(b) (f) (g) (h) Description of monument found at this corner and if it was accepted, state all evidence (material, testimonial, occupational, plats, records, other monuments) used as a basis for accepting. If not accepted or if nothing was found, state evidence used as basis for establishing location. If reestablished through lost corner proportionate methods, indicate all monuments, distances and directions used to establish.

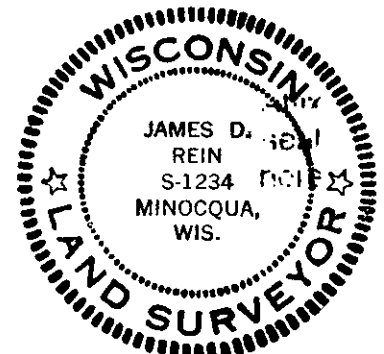
July, 1859 - H. D. Fellows - Set post corner to Sections 5, 6, 31, 32. B.T.'s:
 Tamarac 6", N87°W, 170 links - Tamarac 6", S36°E, 50 links - Tamarac 6", N32°E, 138 links - Tamarac 6", S41°W, 80 links.
 Feb. 6, 1950 - Genisot Engineering Co. - Identifies corner as Iron pipe. No B.T.'s listed.
 July 2, 1977 - J. Kraemer and J. Rein, Wilderness Surveying - found old 2" dia. iron pipe up 1½ feet above ground in swamp. 2 old wood posts and a ½" dia. iron pipe along side. Located 4 rotted stumps which closely match original B.T.'s: 6" stump N34°E, 91.2 feet - 2" stump S30°E, 33.3 feet - 4" stump S45°W, 52.7 feet - 5" stump N86°W, 112.7 feet. Made 2 new B.T.'s 7" Spruce N1°W, 62.1 feet and 5" Spruce S63°W, 22.9 feet.
 August 14, 1986 - James D. Rein - 2 inch Iron pipe remains undisturbed in swamp. 2 previous B.T.'s still alive: 7" Spruce N1°W, 62.43 feet - 5" Spruce S63°W, 23.20 feet. Made new B.T.'s - 5" Spruce S22°E, 39.28 feet and 3½" Tamarack, N66°E, 57.82 feet. Distances measured to aluminum nails set in center of root crown on side of trees.

(c) (d) (e) Plan view of corner with ties to at least 4 witness monuments. If in disagreement with previously established corner, show the distances between the two corners and also indicate the ties to the disputed corner.



(i) I, James D. Rein, Registered Land Surveyor No. S-1234
 (type or print name) certify that the corner location on this record was determined by me or under my direction and control and that this U.S. Public Land Survey Monument Record is correct and complete to the best of my knowledge and belief.

James D. Rein Signature August 7th, 1986 Date



Index No. A-5

3710310000