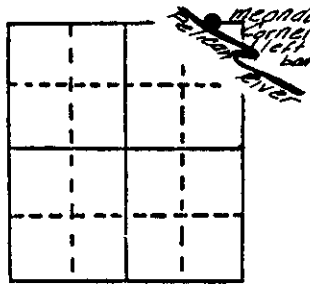


# U.S. PUBLIC LAND SURVEY MONUMENT RECORD

**Note:** This form is intended and designed to fulfill all requirements of Wisconsin Administrative Code, Chapter A-E 5.02, U.S. Public Land Survey Monument Record (3) (a) (b) (c) (d) (e) (f) (g) (h) (i). An additional sheet may be added if necessary to conform with said requirements.

(a) Corner location: Township 36 North  
 Range 10 East/West

MEANDER CORNER  
 Left bank of  
 Pelican River



Town/City/Village Pelican

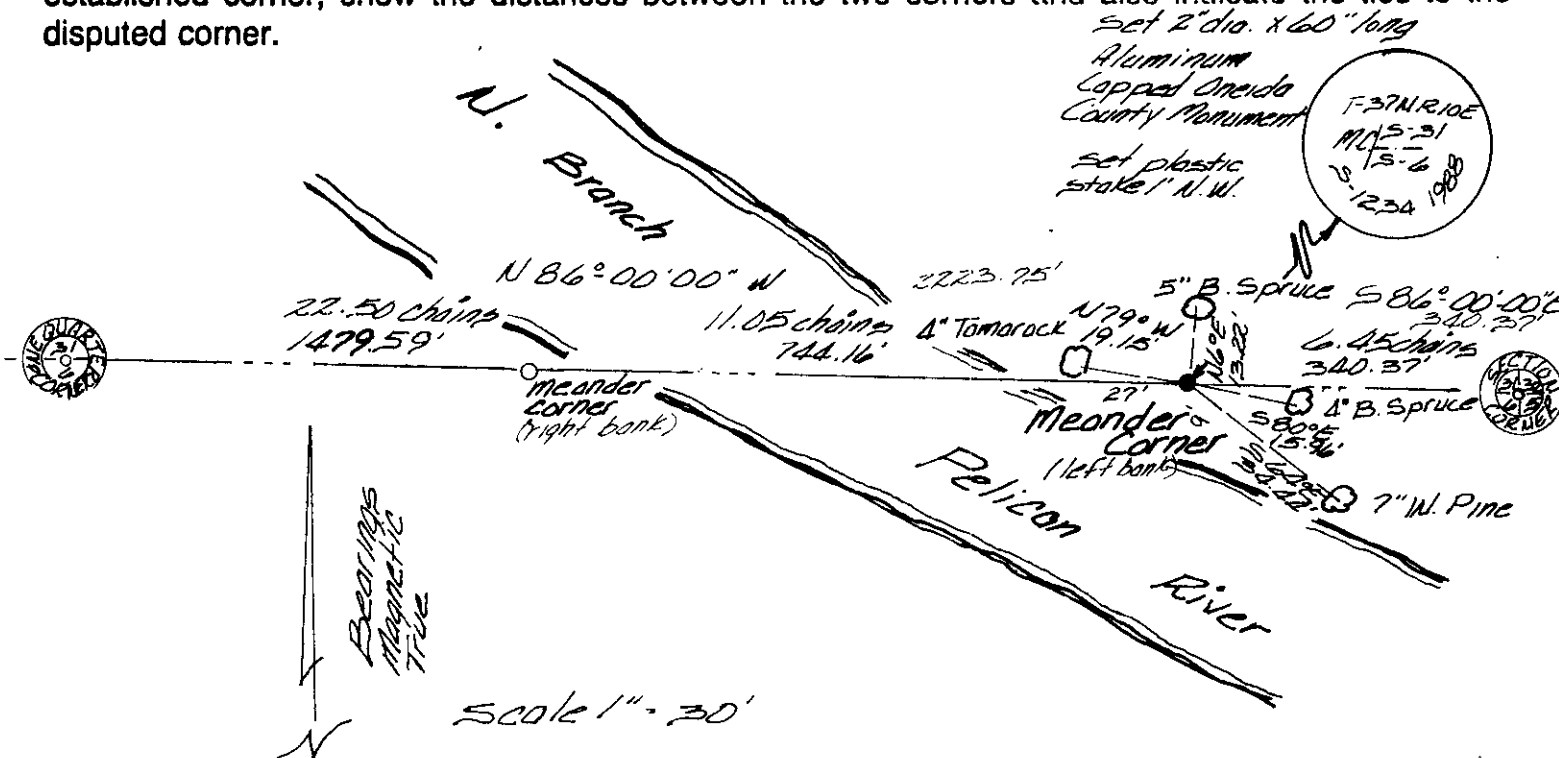
County Oneida

Section 6

(b) (f) (g) (h) Description of monument found at this corner and if it was accepted, state all evidence (material, testimonial, occupational, plats, records, other monuments) used as a basis for accepting. If not accepted or if nothing was found, state evidence used as basis for establishing location. If reestablished through lost corner proportionate methods, indicate all monuments, distances and directions used to establish.

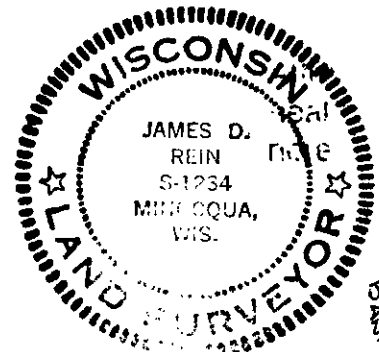
July 1859 - H.C. Fellows, Deputy Surveyor- Set meander post for corner - Original BT's: Tamarac 10" N27°W, 23 links; Tamarac 5" S82°E, 65 links.  
 March 1988 - James D. Rein, RLS - Unable to recover acceptable evidence for original corner position, thus I re-establish the meander corner on the township line between the northeast section corner and the north quarter corner of Section 6 near the left bank of the Pelican River - Set a capped 2" dia x 60" long aluminum piston type aluminum monument marked as shown in plan view. Made new bearing trees with aluminum nails set in the center of root crown on side of tree facing corner.

(c) (d) (e) Plan view of corner with ties to at least 4 witness monuments. If in disagreement with previously established corner, show the distances between the two corners and also indicate the ties to the disputed corner.



(i) I, James D. Rein, Registered Land Surveyor  
 (type or print name) certify that the corner location on this record was determined by me or under my direction and control and that this U.S. Public Land Survey Monument Record is correct and complete to the best of my knowledge and belief.

James D. Rein Signature  
April 9th, 1988 Date



Index No. A-5 (Left)

3710310004