

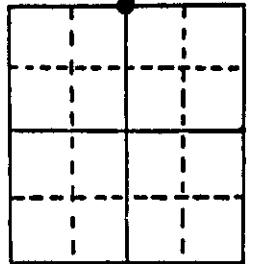
U.S. PUBLIC LAND SURVEY MONUMENT RECORD

Note: This form is intended and designed to fulfill all requirements of Wisconsin Administrative Code, Chapter A-E 5.02, U.S. Public Land Survey Monument Record (3) (a) (b) (c) (d) (e) (f) (g) (h) (i). An additional sheet may be added if necessary to conform with said requirements.

(a) Corner location: Township 36 North
 Range 10 East/West

Town/City/Village Pelican

County Oneida



Section 6

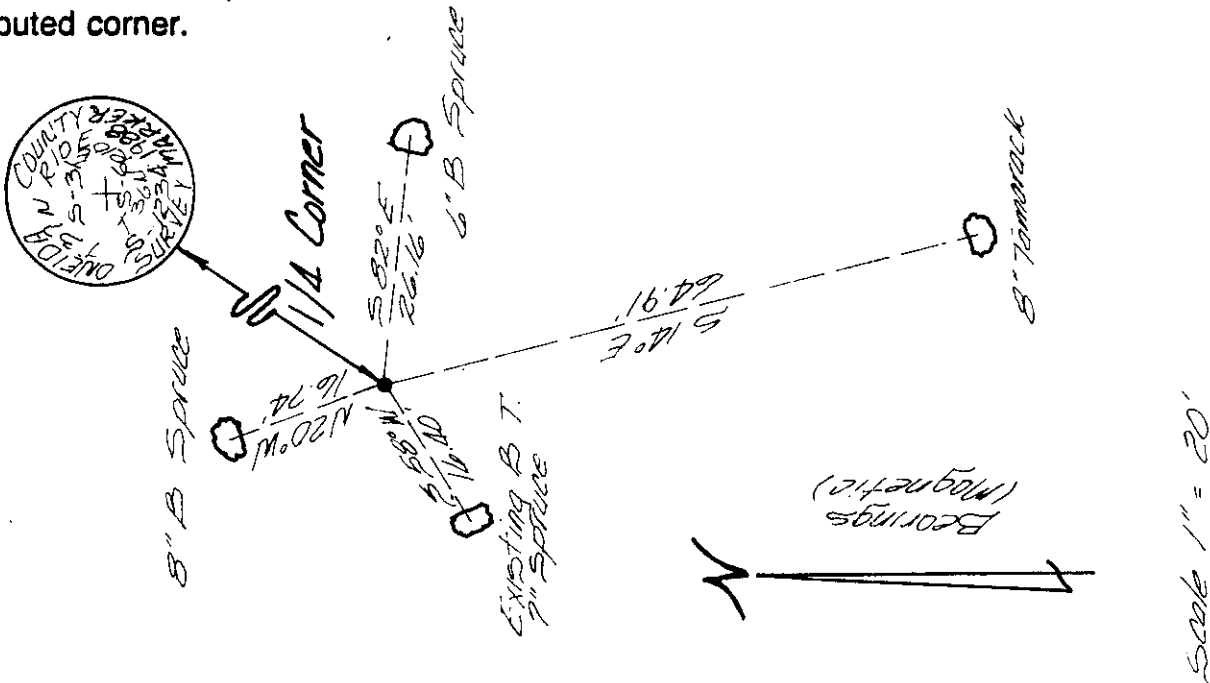
(b) (f) (g) (h) Description of monument found at this corner and if it was accepted, state all evidence (material, testimonial, occupational, plats, records, other monuments) used as a basis for accepting. If not accepted or if nothing was found, state evidence used as basis for establishing location. If reestablished through lost corner proportionate methods, indicate all monuments, distances and directions used to establish.

July 1859 - H.C. Fellows, Deputy Surveyor - Set 1/4 Sec. post original BT's:
 Spruce 7" S72°W 42 links; Spruce 7" N67°E 57 links

August 1975 - Harold Behn RLS. - Replaced decayed Tamarack post and 10 Ft long x 1 3/4" iron pipe with a 1 1/4" dia iron pipe. Made BT's; 5" Spruce N20°E, 2.9 ft and a 6" Spruce S63°W, 16.4 ft

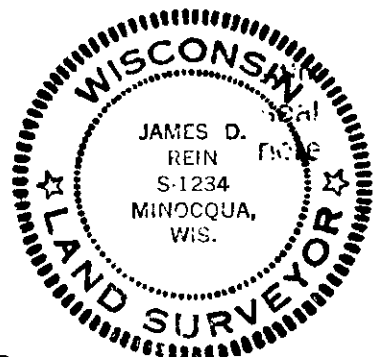
March 1988 - James D. Rein, RLS.; Drove capped 2" dia x 30" long flange bottom aluminum monument over a found 1" inside diameter iron pipe. Retied existing bearing tree and made new BT's as shown in plan view. Distance measurements made to aluminum nails set in center of root crown on side of tree facing corner. Set plastic stake 1 foot west of corner.

(c) (d) (e) Plan view of corner with ties to at least 4 witness monuments. If in disagreement with previously established corner, show the distances between the two corners and also indicate the ties to the disputed corner.



(i) I, James D. Rein, Registered Land Surveyor No. S-1234
 (type or print name) certify that the corner location on this record was determined by me or under my direction and control and that this U.S. Public Land Survey Monument Record is correct and complete to the best of my knowledge and belief.

James D. Rein Signature April 9th, 1988 Date



Index No. A-3