
Although I cannot determine who set the capped pipe (looks like a Maine pipe), I accepted the pipe as the corner, and witnessed it as shown on the reverse side of this sheet.

FEB 08 2023

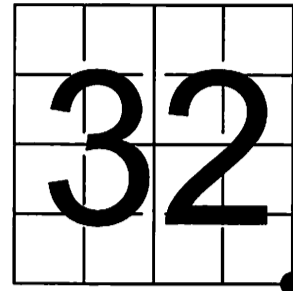
KYLE J. FRANSON
REGISTER OF DEEDS

U S PUBLIC LAND SURVEY MONUMENT RECORD - ADDENDUM

NOTE: This form is intended and designed to fulfill all requirements of Wisconsin Administrative Code, Chapter A-E 7.08 U.S. Public Land Survey Monument Record (3) (a-i)

A-E 7.08(3)(a) Identity of corner
SOUTHEAST CORNER OF SECTION 32
TOWNSHIP 37 NORTH
RANGE 10 EAST OF THE 4TH PM
TOWN OF STELLA,
COUNTY OF ONEIDA

WISCORS - ONEIDA COUNTY
N: 166,418.762 USft (166,418.792)
E: 302,267.118 USft (302,267.050)
Datum: NAD83 (2011)
GNSS Method RTN - Direct
GNSS Control WISCORS VRS



The coordinate value shown has been verified by the average of two or more GPS observations at a markedly different time. Values shown in parenthesis, are previously published measurements.

A-E 7.08(3)(b) Description of any record evidence, monument evidence, occupational evidence, testimonial evidence, or any other material evidence.

Original Surveyor: Hiram C. Fellows

Date of Original Survey Commenced: July, 1859
Completed: July, 1859

Original Accessories:
Birch 9 N 61° W 18 Links
Aspen 12 N 48° E 14 Links
Maple 9 S 37° E 21 Links
Aspen 14 S 74° W 78 Links

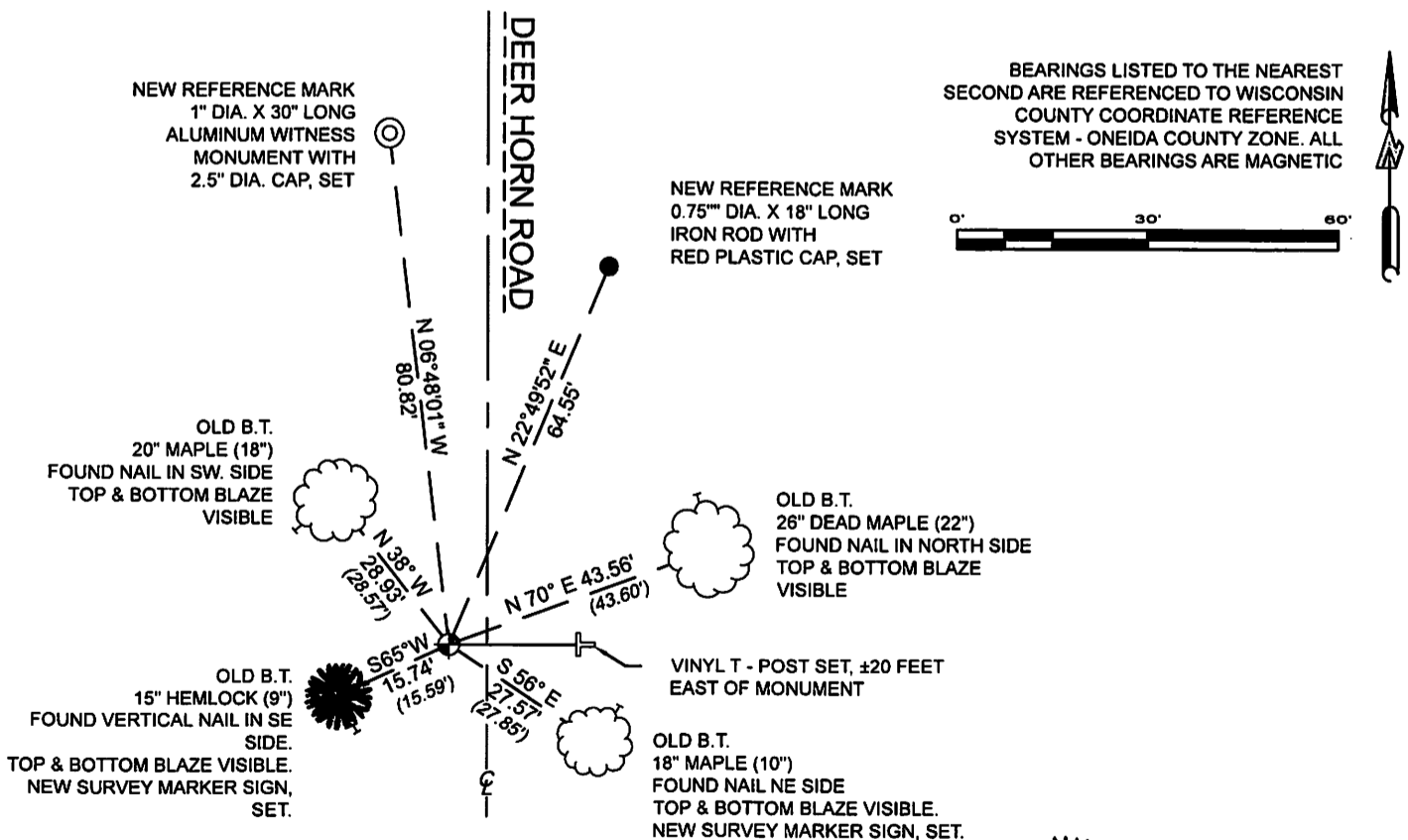
See Previous Monument Record: Index No. Z-9 - October 1, 1986 - Surveyor 1624 - Michael J. Romportl - Thence:

April 26, 2002 - Surveyor 1795 - Devon Vanden Heuvel - indicates this position as "capped monument" on O.C.S. Map C2129.
July 3, 2014 - Surveyor 2729 - Gregory S. Maines - indicates this position as "2-1/2" brass capped iron pipe found" on O.C.S. Map C2830.
October 16, 2019 - Surveyor 2343 - Kevin P. Bixby - indicates this position as "2.5" brass capped I.P." on O.C.S. Map B8179.

July 21, 2022 - At the request of Oneida County Land Information, I found: 2.5" diameter brass capped iron pipe stamped to identify the corner position. I also found all of Romportl's B.T.'s established as noted on U.S. Public Land Survey Monument Record Z-9 standing and alive (unless noted below). Monument is ±6' west of centerline and near the west edge of Deer Horn Road.

A-E 7.08(3)(f) I accept this monument as a FOUND PERPETUATED LOCATION OF THE CORNER and established 2 new witnesses as shown below.

A-E 7.08(3)(c)(d)(e)(h) Plan view of corner with references to at least 4 witness monuments. If in disagreement with previously established corner, show the distances between the two corners and also indicate the ties to the disputed. The directions and distances to other public land survey corners used as evidence or used for determining the corner location.

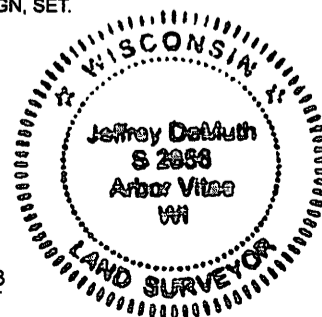


A-E 7.08(3)(i) I, Jeffrey L. DeMuth, Professional Land Surveyor No. S-2656, hereby certify that the corner location on this record was determined by me or under my direction and control and that this U.S. Public Land Survey Monument Record is correct and complete to the best of my knowledge, and belief

Handwritten signature of Jeffrey L. DeMuth

January 17, 2023
DATE

SIGNATURE



Z-9
43710320000