

U.S. PUBLIC LAND SURVEY MONUMENT RECORD

REGISTER OF DEEDS
ONEIDA COUNTY

Note: This form is intended and designed to fulfill all requirements of the Wisconsin Administrative Code, Chapter A-E 7.08 U.S. Public Land Monument Record (3)(a)(b)(c)(d)(e)(f)(g)(h)(i). An additional sheet may be added if necessary to conform with said requirements.

JUN 22 2017

(a) CORNER LOCATION:

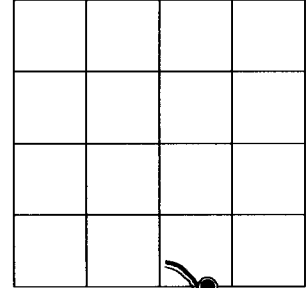
E. Meander Corner of Section 32
Township 37 North
Range 10 East
Town of Stella
County of Oneida

WISCORS - Oneida County
North: 166466.319 USft
East: 300739.374 USft
Latitude: 45° 38' 32.17457" N
Longitude: 89° 16' 04.42720" W
Datum: NAD 83(2011)
GNSS Method: RTK - Offset
GNSS Control: WISCORS VRS
Record North: 166466.393 USft
Record East: 300739.443 USft
Record Datum: NAD 83(1991)

AT _____ O'CLOCK _____ M
KYLE J. FRANSON
REGISTER OF DEEDS

(RECORDING AREA)

SECTION 32



(b) HISTORY OF ORIGINAL CORNER ESTABLISHMENT

Original Surveyor: Hiram C. Fellows
Date of Survey: July, 1859

Original B.T.'S: Yellow Pine 8" N 42°E, 8 lks.
Yellow Pine 9" S 20°W 13 lks.

(f)(g)(h) DESCRIPTION OF MONUMENT FOUND AT THIS CORNER AND IF IT WAS ACCEPTED, STATE ALL EVIDENCE (MATERIAL, TESTIMONIAL, OCCUPATIONAL, PLATS, RECORD, OTHER MONUMENTS) USED AS A BASIS FOR ESTABLISHING LOCATION. IF NOT ACCEPTED OR IF NOTHING WAS FOUND, STATE EVIDENCE USED AS BASIS FOR ESTABLISHING LOCATION. IF REESTABLISHED THROUGH LOST CORNER PROPORTIONATE METHODS, INDICATE ALL MONUMENTS, DISTANCES AND DIRECTIONS USED TO ESTABLISH. INDICATE TYPE OF MONUMENT AND SIGN POST FOUND OR SET.

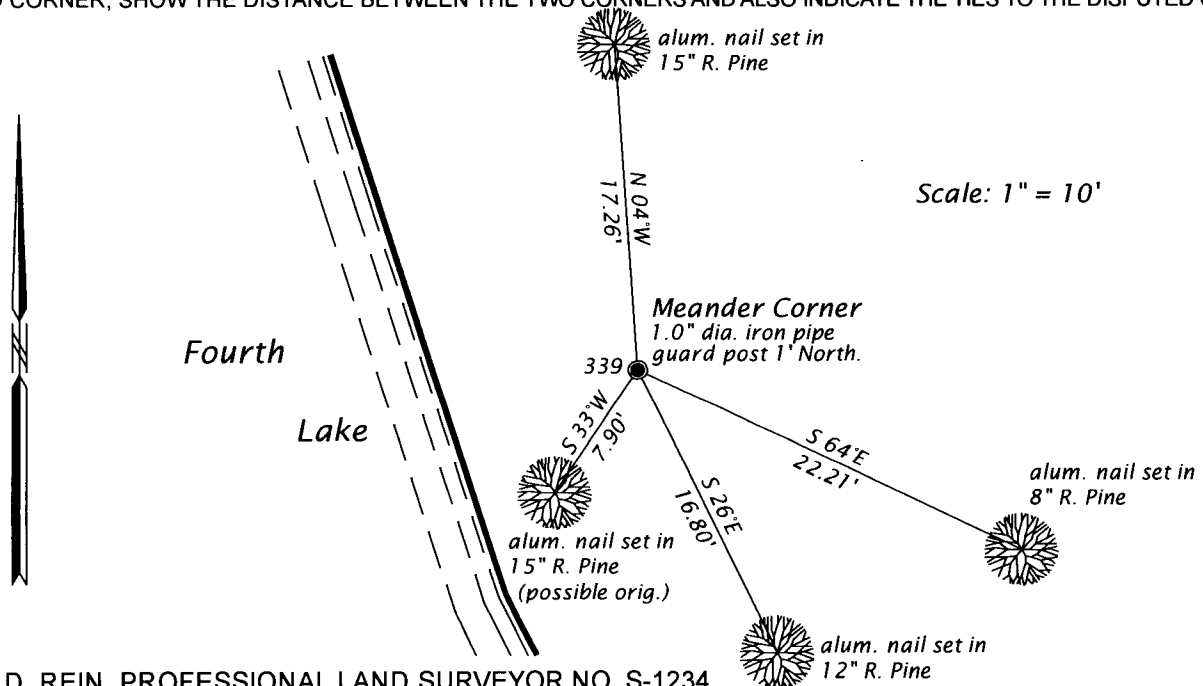
December 26, 1931 - H. C. Hall, County Surveyor (H. C. Hall Book 1, page 258, survey in Section 32, T37N, R10E) found a Y. Pine growing where record dist. from both Orig. bearings to MC intersect.

February 6, 1950 - W. R. Wincentsen, County Surveyor, (Wincentsen Book, pages 81 and 82, survey in Section 5, T36N, R10E) notes describe corner monumented by an iron pipe referenced by B.T.'s; Pine 8" N 35°E, 9.5 lks.; Pine 18" N 13° 30' E, 2.8 lks.; 14" Pine N79°30'E, 8.2 lks.; and 16" Pine S23°W, 12 links

June 7th, 1977 - James D. Rein, RLS No. 1234, Wilderness Surveying, Inc. field notes and "County Plat of Paradise Acres" describe corner as "Iron pipe set, 3/4" dia. and 30" long" based on Genisot's B.T.'s: 18" N. Pine N13°E, 1.8'; 14" N. Pine N79°E, 5.4'; 8" N. Pine N35°E, 6.3'; and a 16" N. Pine S23°W, 7.9'. (CONTINUED ON REVERSE PAGE)

The coordinate value shown has been verified by at least one of the following methods: 1) comparison to a previously GPS determined published value; 2) the value is the average of two or more GPS observations at a markedly different time; 3) one or more distances were measured back to the GPS observed corner from temporary GPS observed offset locations.

(c)(d)(e) PLAN VIEW OF CORNER WITH TIES TO AT LEAST 4 WITNESS MONUMENTS. IF IN DISAGREEMENT WITH PREVIOUSLY ESTABLISHED CORNER, SHOW THE DISTANCE BETWEEN THE TWO CORNERS AND ALSO INDICATE THE TIES TO THE DISPUTED CORNER.



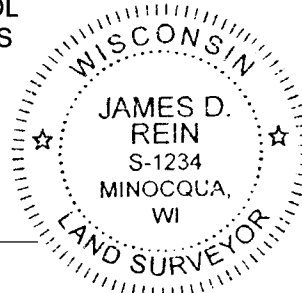
(i) I, JAMES D. REIN, PROFESSIONAL LAND SURVEYOR NO. S-1234 HEREBY CERTIFY THAT THE CORNER LOCATION ON THIS RECORD WAS DETERMINED BY ME OR UNDER MY DIRECTION AND CONTROL AND THAT THIS U.S. PUBLIC LAND SURVEY MONUMENT RECORD IS CORRECT AND COMPLETE TO THE BEST OF MY KNOWLEDGE AND BELIEF.

[Handwritten Signature]

6-12-17

SIGNATURE

DATE



INDEX NO. Z-7-8
3710320012

(CONTINUED FROM REVERSE PAGE)

March 23, 2017 - James D. Rein, PLS No. 1234, we recovered a 1" dia. iron pipe $\pm 1.5'$ southerly of a 16" R. Pine (Wincentzen's B.T.) and 15" R. Pine (Wincentzen's B.T.) S33°W, 7.9'. We did not replace the iron pipe with a county monument because it is wedged into the pine tree roots. We set a white poly guard post and made new reference ties as shown in the plan.