

CERTIFIED LAND CORNER RESTORATION

State of Wisconsin }  
County of Oneida } ss.

I, James E. Kasson, do hereby certify that on the 12th day of July, 1981, I found evidence of the M.C. on the north line ~~XXXXXX~~ corner of Section 5 on west shore 4th Lake Township 36 North, Range 10E, Fourth Principal Meridian, as described hereon; and that from this evidence I established a new monument and accessories as described hereon to perpetuate the original location of this corner:

Description of original monument and accessories and subsequent restorations:

see record book

6" Tamarack N22W 38 links  
" " S54W 57 links

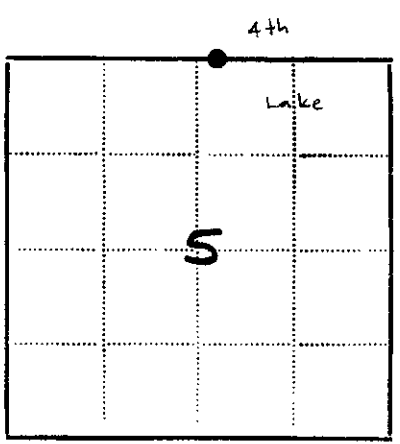
Description of corner evidence found:

No corner evidence found

Description of monument and accessories I established to perpetuate the location of this corner:

Set 1" x 30" iron pipe

Made Bt's: 7" Tamarack, N76°E, 3.65'  
3" Spruce, N40°W, 19.71'



● - Corner monument restored  
□ -

Resident witnesses

Dated at Rhinelander Wisconsin, this 22 day of July 1981.

Signature James E. Kasson Title R.L.S.  
(County Surveyor, Registered Land Surveyor, or other duly authorized official)

Surveyors Registration No. 1416

Office of Reg. of Deeds County of Oneida

I hereby certify that the within instrument was filed in this office for record on the 11 day of June 1986, and was filed in Book No. Page No. of County Records.

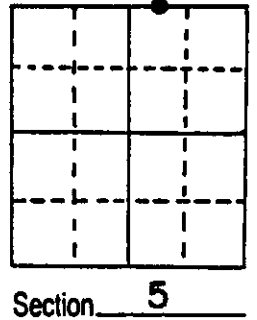
Signature Darla Berger Title Registrar of Deeds  
Cynthia A. Pias, Deputy

Township, Range, Section, Index No., Page No.

# U.S. PUBLIC LAND SURVEY MONUMENT RECORD

Note: This form is intended and designed to fulfill all requirements of Wisconsin Administrative Code, Chapter A-E 5.02, U.S. Public Land Survey Monument Record (3) (a) (b) (c) (d) (e) (f) (g) (h) (i). An additional sheet may be added if necessary to conform with said requirements.

(a) Corner location: Township 36 North  
 Range 10 East ~~West~~  
 Town/City/Village STELLA  
 County ONEIDA

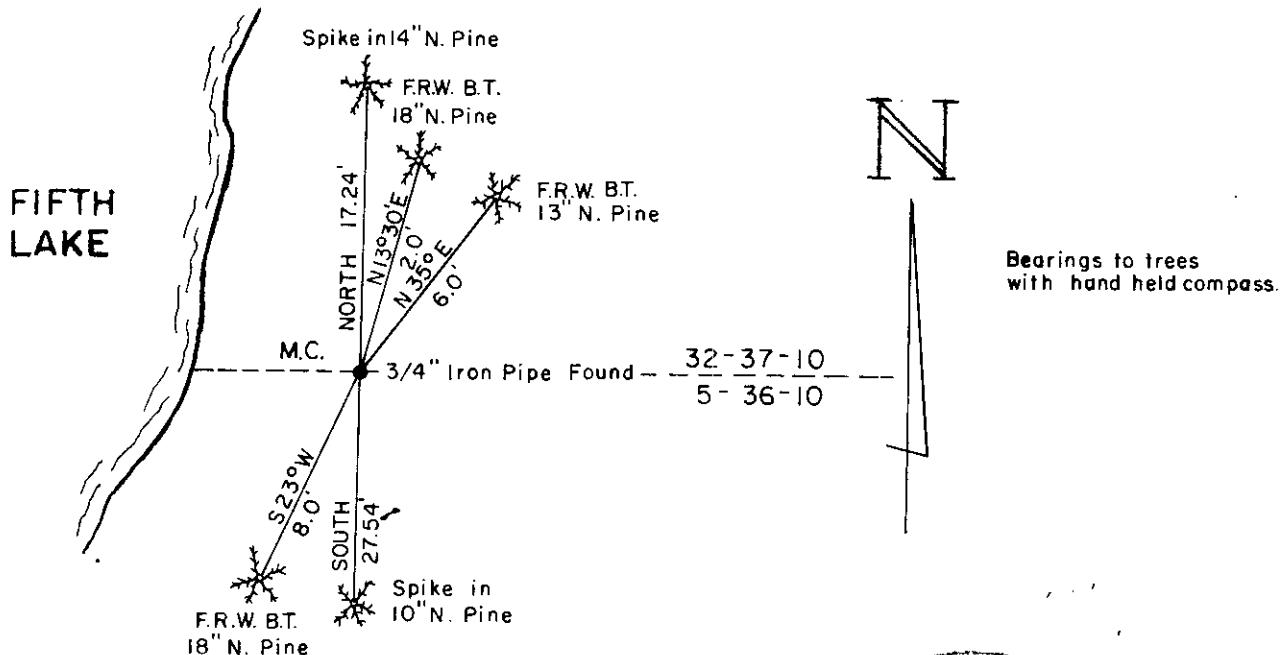


(b) (f) (g) (h) Description of monument found at this corner and if it was accepted, state all evidence (material, testimonial, occupational, plats, records, other monuments) used as a basis for accepting. If not accepted or if nothing was found, state evidence used as basis for establishing location. If reestablished through lost corner proportionate methods, indicate all monuments, distances and directions used to establish.

Corner was found by F.R. Wincentzen in 1950. He made 4 BT's of which I found 3 and a 1/2" iron pipe marking corner position. The iron pipe remains in place.

REGISTER OF DEEDS OFFICE  
 ONEIDA COUNTY, WIS.  
**FILED**  
 JUL 11 1986  
 At 10:00 O'Clock A.M.  
 DORIS VERAGE KUEHN  
 REGISTER OF DEEDS

(c) (d) (e) Plan view of corner with ties to at least 4 witness monuments. If in disagreement with previously established corner, show the distances between the two corners and also indicate the ties to the disputed corner.



(i) I, William E. Bandow  
 (type or print name) certify that the corner location on this record was determined by me or under my direction and control and that this U.S. Public Land Survey Monument Record is correct and complete to the best of my knowledge and belief.

William E. Bandow 12-7-84  
 Signature Date



Index No. A-7-8

