

Stock No. 26273

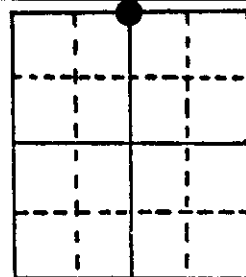
U.S. PUBLIC LAND SURVEY MONUMENT RECORD

Note: This form is intended and designed to fulfill all requirements of the Wisconsin Administrative Code, Chapter A-E 5.02, U.S. Public Land Survey Monument Record (3) (a) (b) (c) (d) (e) (f) (g) (h) (i) (j) (k) (l) (m) (n) (o) (p) (q) (r) (s) (t) (u) (v) (w) (x) (y) (z). An additional sheet may be added if necessary to conform with said requirements.

(a) Corner location: Township 36 North
Range 10 East/West

Town/City/Village Stella

County Oneida



Section 5

(b) (f) (g) (h) Description of monument found at this corner and if it was accepted, state all evidence (material, testimonial, occupational, plats, records, other monuments) used as a basis for accepting. If not accepted or if nothing was found, state evidence used as basis for establishing location. If reestablished through lost corner proportionate methods, indicate all monuments, distances and directions used to establish.

July, 1859 - H. C. Fellows- Set ¼ Section post B.T.'s: Tamarac 6", S56°W, 8 links
Tamarac 6", N36°E, 28 links

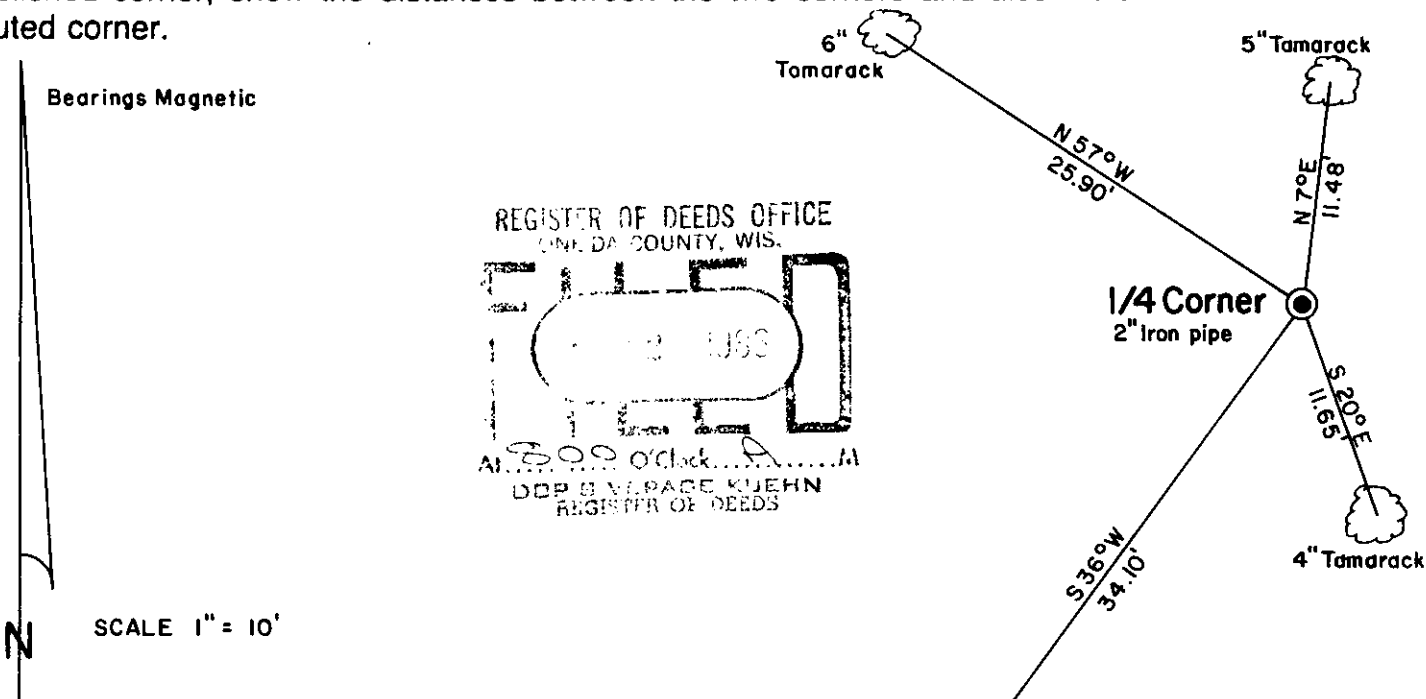
February 6th, 1950 - Genisot Engineering Co. - Identifies corner as Iron pipe B.T.'s:
Spruce 6", N34°-30'E, 30.2 links - Spruce 4", S2°-30'W, 25 links (Hall's)

June, 1977 - James D. Rein, Wilderness Surveying - found base of rotted off post, set 2" X 7 ft. iron pipe with pin on end. Set new scribed tamarac post. Existing B.T.'s:
7" Spruce, N34°E, 20.2 feet (live) - 3" Spruce, S2°-W, 16.12 feet (Dead)
New B.T.'s: 5" Spruce, N13°-W, 15.72 feet - 5" Tamarack, N50°W, 25.7 feet -
5" Spruce, S60°W, 5.6 feet

August 5th, 1986 - James D. Rein, Wilderness Surveying, Inc. - Same 2" iron pipe. Only one B.T. still alive - 6" Tamarack, N57°W, 25.90 feet - New B.T.'s:
6" Tamarack, S36°W, 34.10 feet - 4" Tamarack, S20°E, 11.65 feet -
5" Tamarack, N7°E, 11.48 feet

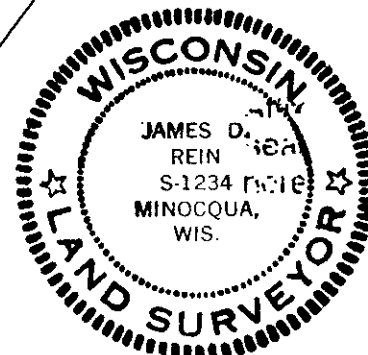
Distances measured to aluminum nails set in center of root crown on side of trees.

(c) (d) (e) Plan view of corner with ties to at least 4 witness monuments. If in disagreement with previously established corner, show the distances between the two corners and also indicate the ties to the disputed corner.



(i) I, James D. Rein, Registered Land Surveyor No. S-1234
(type or print name) certify that the corner location on this record was determined by me or under my direction and control and that this U.S. Public Land Survey Monument Record is correct and complete to the best of my knowledge and belief.

James D. Rein Signature
August 7th, 1986 Date



Index No. A-7

3710320020