

# U.S. PUBLIC LAND SURVEY MONUMENT RECORD

REGISTER OF DEEDS  
ONEIDA COUNTY  
WISCONSIN

JUN 22 2017

Note: This form is intended and designed to fulfill all requirements of the Wisconsin Administrative Code, Chapter A-E 7.08 U.S. Public Land Monument Record (3)(a)(b)(c)(d)(e)(f)(g)(h)(i). An additional sheet may be added if necessary to conform with said requirements.

**(a) CORNER LOCATION:**

East Quarter Corner of Section 32  
Township 37 North  
Range 10 East  
Town of Stella  
County of Oneida

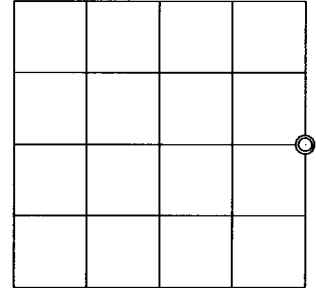
**WISCORS - Oneida County**

North: \* USft  
East: \* USft  
Latitude:  
Longitude:  
Datum: NAD 83(2011)  
GNSS Method: Static - Direct  
GNSS Control: WISCORS VRS  
Record North: 169079.137 USft  
Record East: 302220.956 USft  
Record Datum: NAD 83(1991)

AT            O'CLOCK            M  
**KYLE J. FRANSON**  
REGISTER OF DEEDS

( RECORDING AREA )

SECTION 32



**(b) HISTORY OF ORIGINAL CORNER ESTABLISHMENT**

Original Surveyor: William E. Daugherty  
Date of Survey: Commenced August 21st, 1863  
Completed August 27th, 1863  
Original B.T.'S: Spruce 7" S 51°E, 20 lks.  
Fir 7" West 9 lks.

(f)(g)(h) DESCRIPTION OF MONUMENT FOUND AT THIS CORNER AND IF IT WAS ACCEPTED, STATE ALL EVIDENCE (MATERIAL, TESTIMONIAL, OCCUPATIONAL, PLATS, RECORD, OTHER MONUMENTS) USED AS A BASIS FOR ESTABLISHING LOCATION. IF NOT ACCEPTED OR IF NOTHING WAS FOUND, STATE EVIDENCE USED AS BASIS FOR ESTABLISHING LOCATION. IF REESTABLISHED THROUGH LOST CORNER PROPORTIONATE METHODS, INDICATE ALL MONUMENTS, DISTANCES AND DIRECTIONS USED TO ESTABLISH. INDICATE TYPE OF MONUMENT AND SIGN POST FOUND OR SET.

March 19, 1899 - D. H. Vaughan, County Surveyor (Old Field Book 1, page 36, for survey in Section 33, T37N, R10E) found 1/4 corner from fir, broke off at 1/4S mark, spruce gone.

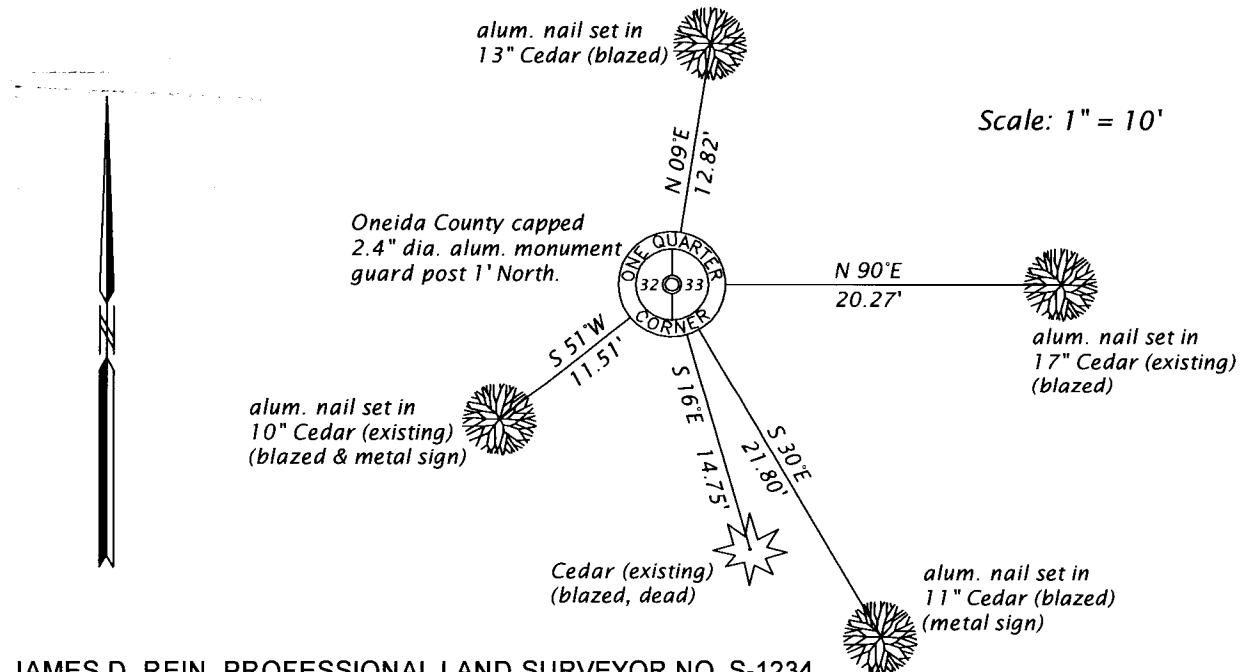
June 7 & 9, 1915 - D. H. Vaughan, County Surveyor (Old Field Book 2, page 32 and transcribed in Old Field Book 8, page 5, and in Door-Vaughan Book, page 334, for a survey in Section 33, T37N, R10 E), random South from NW Sec. Cor. @ 41.21 ch. fell 82 lks E. of 1/4 post, 1 org. tree nearly gone, SE tree all gone. Set cedar post and made new BT's: Cedar 10" N54°W, 22 1/2 lks.; cedar 12" S12 1/2°E, 15 lks.

June 3, 1977 - James D. Rein, RLS No. 1234. Wilderness Surveying, Inc. field notes and "County Plat of Paradise Acres" describe corner as 2" dia. iron pipe and cedar post set from Vaughan's BT's: 10" cedar (dead) N50°W, 9.9"; and a 10" cedar (dead) S9°E, 14.75"; and made BT's: 6" cedar S51°W, 11.17 feet; and a 7" cedar N9°E, 12.7"

May 4, 2017 - James D. Rein, PLS No. 1234, we recovered a 2.5" dia. iron pipe, referenced by the remains, of Vaughan's SE bearing tree and my previous NE bearing tree. I accept the iron pipe as monumenting the original corner position, which we replaced with an Oneida County capped 2.5" x 30" long aluminum monument and new reference ties as shown in the plan.

~~The coordinate value shown has been verified by at least one of the following methods: 1) comparison to a previously GPS determined published value; 2) the value is the average of two or more GPS observations at a markedly different time; 3) one or more distances were measured back to the GPS observed corner from temporary GPS observed offset locations.~~ *R. MGR*

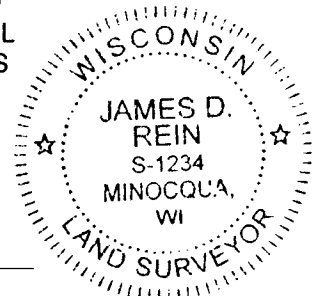
(c)(d)(e) PLAN VIEW OF CORNER WITH TIES TO AT LEAST 4 WITNESS MONUMENTS. IF IN DISAGREEMENT WITH PREVIOUSLY ESTABLISHED CORNER, SHOW THE DISTANCE BETWEEN THE TWO CORNERS AND ALSO INDICATE THE TIES TO THE DISPUTED CORNER.



(i) I, JAMES D. REIN, PROFESSIONAL LAND SURVEYOR NO. S-1234 HEREBY CERTIFY THAT THE CORNER LOCATION ON THIS RECORD WAS DETERMINED BY ME OR UNDER MY DIRECTION AND CONTROL AND THAT THIS U.S. PUBLIC LAND SURVEY MONUMENT RECORD IS CORRECT AND COMPLETE TO THE BEST OF MY KNOWLEDGE AND BELIEF.

*James D. Rein*  
SIGNATURE

6-12-17  
DATE



INDEX NO. X-9  
3710322000