

# U.S. PUBLIC LAND SURVEY MONUMENT RECORD

Instructions: This record shall show the location of the corner and shall include all of the following nine elements (a through i).

(a) Identify the corner by reference to the U.S. public land survey system.

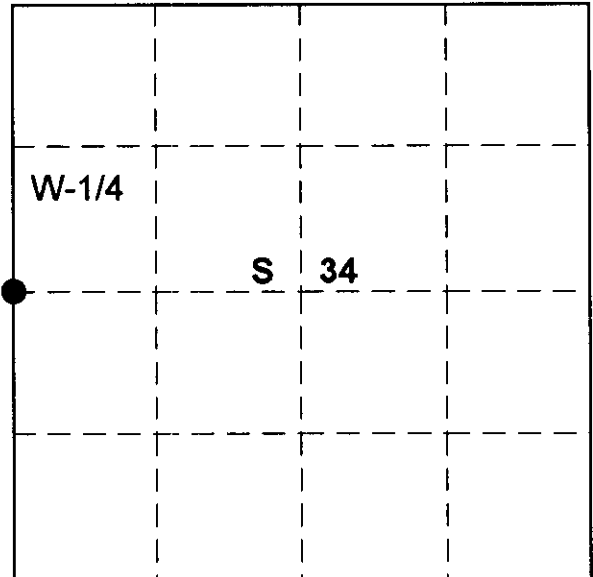
○ = Corner monument restored.

West-1/4 Corner

Sec 34 T 37 N, R 10 E

Type of Monument:

2-1/4" Aluminum pipe W/ 3-1/4" Alloy cap.



## ONEIDA COUNTY

(b) Describe any record evidence, monument evidence, occupational evidence, testimonial evidence or any other material evidence you considered, and whether the monument was found or placed.  
Original corner established in 1863 by Wm.F. Daugherty, Gov.t Deputy Surveyor from which White pine 10" bears S45E 22lks and Spruce 8" bears N64E 15lks.

In 1899 D.H. Vaughan county surveyor reestablished said quarter section corner on a proportional measurement. He ran from the southwest section corner to the northwest section corner of section 34, for a total distance of 80.98 chains (5344.68') Set a wood post 40.49 chains (2672.34') intermediate.

In 1958 H.C.Lawrence Land Surveyor recovered Vaughans old scribed post and replaced with new post. Ran from southwest section corner to recovered quarter corner section 34, for a distance of 44.53 chains(2674.98')

Recovered H.C Lawrence's 3"x3' wood post scribed 1/4S-S33-S34 in 1996.  
Replaced post with a 2-1/4' aluminum pipe W/ 3-1/4' alloy cap projectin 6" above ground.  
No evidence of any old BTs.

(c) In the plan view drawing below, provide reference ties to at least 4 witness monuments, or, if the location is within a municipality, to at least 2 witness monuments. (Witness monuments shall be made of concrete, natural stone, iron or other equally durable material).

Describe witness monuments:

(d) Show a plan view drawing depicting the relevant monuments and reference ties which is sufficient in detail to enable accurate relocation of the corner monument if the corner monument is disturbed. Indicate north.

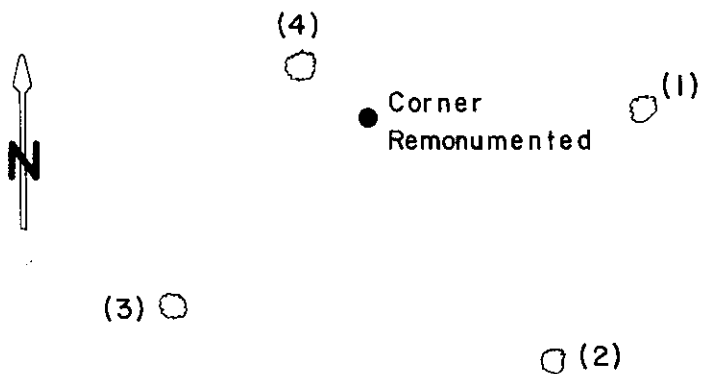
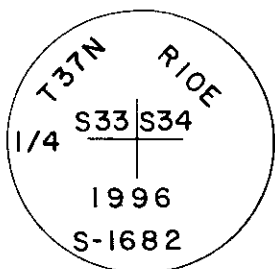
**Marked NBTs**

- (1) Red Maple 12" N88E 43.21'
- (2) Red Oak 5" S37E 47.75'
- (3) Red Maple 6" S45W 42.87'
- (4) White Birch 6" N52W 13.38'

BT sighns on all BTs

**Monument Set**

2-1/4' Alum. Pipe W/ 3-1/4' Alloy Cap

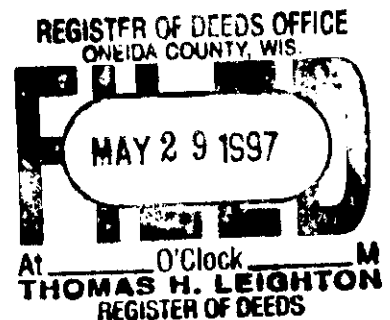
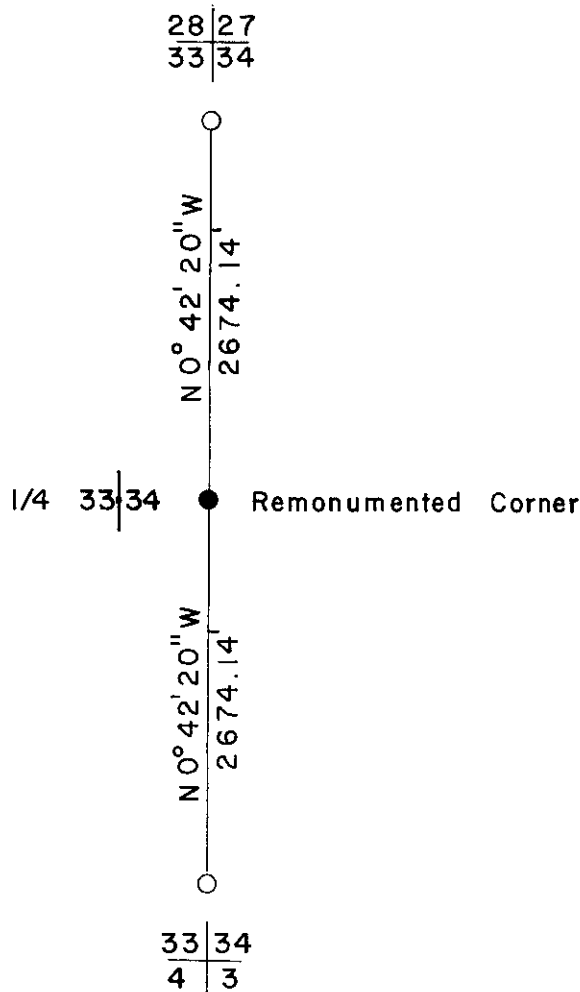


(e) Describe any discrepancy between the location of the corner as restored or reestablished and the location of that corner as previously restored or reestablished by distance and direction. Show the discrepancy on the plan view drawing under (d), above. Show the distances between the corner as previously restored or reestablished and (1) the corner as restored or reestablished, and (2) to at least 2 of the witness monuments shown on the drawing in (d), above.

(f) Was the corner restored through acceptance of (1) an obliterated evidence location, or, (2) a found perpetuated location?

**Perpetuated location.**

(g&h) Was the corner reestablished through lost corners proportionate methods? If so, show the method, including the directions and distances to other public land survey corners used as evidence or used for proportioning in determining the corner location?



(i) I, Glen Barker (type or print name) certify that the corner location shown on this record was determined by me or under my direction and control and that this U.S. Public Land Survey Monument is correct and complete to the best of my knowledge and belief.



Signature

Date

SEC

TWN

RNG