

CERTIFIED LAND CORNER RESTORATION

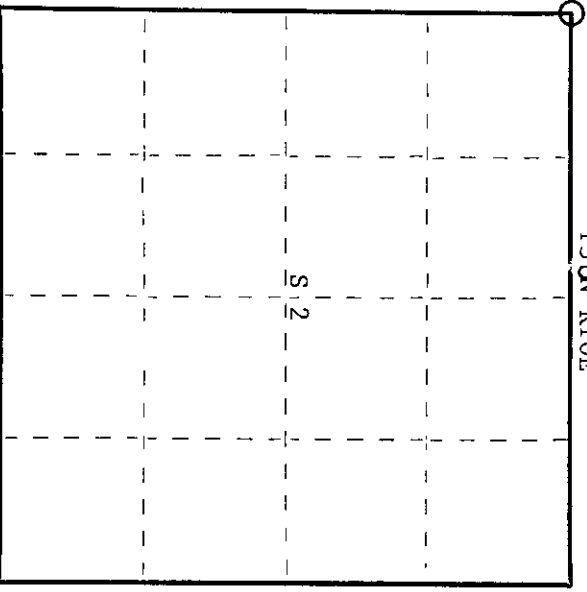
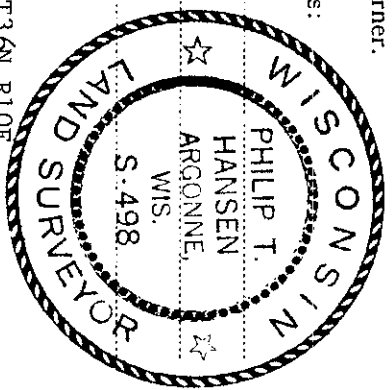
Index No. **A-17**

State of Wisconsin

County of Oneida } ss.

I Phillip T. Hansen, do hereby certify that on the 10th day of May, 1975, I found evidence of the Section corner of 34, 35, 2, and 3 Township 37-36, North, Range 10 East, Fourth Principal Meridian, as described hereon; and that from this evidence I established a new monument and accessories as described hereon to perpetuate the original location of this corner.

Resident witnesses:



O = Corner monument restored.

History of original corner establishment:

Original corner established by Hiram C. Fellows, Govt. Deputy Surveyor, in 1859 from which white pine 10" bears S36°W, 9 links; yellow pine 6" bears N75°E, 32 links; spruce 10" bears S72°E, 20 links and birch 10" bears S50°W, 10 links. Corner recovered by D.H. Vaughan, County Surveyor, who claimed it was a government original. Corner restored by H.C. Lawrence, Registered Land Surveyor, in 1946. Recovered D.H. Vaughan's post which he believed had been moved because of road construction. Chaining the distance verified this and he set his new post 16-1/2 links east of the old post. Witnessed this new post to scribed highline pole S57-1/2°W, 30-1/2 links, scribed S3 B.D.

Description of corner evidence found:

Recovered 4" cedar post, squared and scribed S35 WC. Post had been pulled out and was lying in brush.

Located an iron pipe driven in the road bed from measurements and direction from scribed line pole. This is the true corner.

Description of monument and accessories I established to perpetuate the original location of this corner.

Set a 2-1/2" iron pipe w/brass cap stamped for witness corner -

S498  
T37N  
R  
S34 | S35 10  
S3 | S2 E  
T36N  
CPT-1975  
WC 118 Links

3710 340000

Dated at Rhineland, Wis., this 3rd day of July, 1975.

Signature Phillip T. Hansen Title Registered Land Surveyor Registration No. S 498  
County Surveyor, Registered Land Surveyor, or other duly authorized official

Office of Registrar of Deeds, County of Oneida  
at 3:00 o'clock P. M. 1st day of October, 1975  
I hereby certify that the within instrument was filed in this office for record on the

By Annis Verage Fuenin (Register of Deeds)

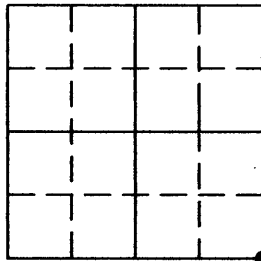
By \_\_\_\_\_ Deputy

# U.S. PUBLIC LAND SURVEY MONUMENT RECORD

Note: This form is intended and designed to fulfill all requirements of the Wisconsin Administrative Code, Chapter A-E 7.08 U.S. Public Land Monument Record (3)(a)(b)(c)(d)(e)(f)(g)(h)(i).  
An additional sheet may be added if necessary to conform with said requirements.

(a) CORNER LOCATION: Oneida County Corner I.D. No.:

SE Section Corner, Sec. 34 3710340000  
Township 37 North  
Range 10 East  
Town of Stella  
County of Oneida



SECTION 34

(f)(g)(h) DESCRIPTION OF MONUMENT FOUND AT THIS CORNER AND IF IT WAS ACCEPTED, STATE ALL EVIDENCE (MATERIAL, TESTIMONIAL, OCCUPATIONS, PLATS, RECORDS, OTHER MONUMENTS) USED AS A BASIS FOR ESTABLISHING LOCATION. IF NOT ACCEPTED IF NOTHING WAS FOUND, STATE EVIDENCE USED AS BASIS FOR ESTABLISHING LOCATION. IF REESTABLISHED THROUGH LOST CORNER PROPORTIONATE METHODS, INDICATE ALL MONUMENTS, DISTANCES AND DIRECTIONS USED TO ESTABLISH. INDICATE TYPE OF MONUMENT AND SIGN POST FOUND OR SET.

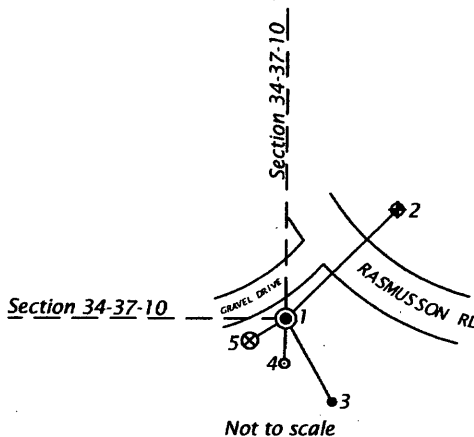
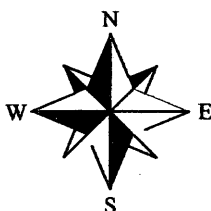
- 1859 - Hiram C. Fellows, Deputy Gov't. Surveyor set post from which the following ties bear:  
10" white pine, S 36° W, 9 lks, 6" yellow pine, N 75° E, 32 lks, 10" spruce, S 72° E, 20 lks, 10" birch, S 50° W, 10 lks
- 1906 - D.H. Vaughn, County Surveyor, recovered post
- 1946 - H.C. Lawrence, Registered Land Surveyor, recovers Vaughn's post, which he believed moved due to road construction. Chaining the distance verified this and he set his new post 16 1/2 lks east of old post. Witnessed this new post to scribed highline pole S 57° 1/2' W, 30 1/2 lks, scribed S3 B.D.
- 1975 - Philip Hansen, Registered Land Surveyor recovers Lawrence's 4" cedar post, squared and scribed S35, WC. Post pulled out and lying in brush. Located iron pipe driven in the road bed from measurements and direction from scribed line pole. His tie sheets notes: "This is the true corner". Set 2 1/2" iron pipe w/ brass cap stamped for witness corner.
- 1997 - Glen Barker, Registered Land Surveyor, calls out a found 1" iron pipe with reference corner. See map B3658 as filed in the Oneida County Land Information Office. No ties.
- 2001 - Todd Loftus, Registered Land Surveyor, calls out a "Subdivisional Monument of Record". See map B4994 as filed in the Oneida County Land Information Office. No ties
- July 1, 2010 - Anthony R. Jones, Registered Land Surveyor, finds 1" iron pipe, as found by Hansen. Pipe is located about 12" south of gravel drive running west. Also found Hansen's set witness corner as shown in the diagram on the below. Also found scribed highline pole as noted by Hansen. Established two additional ties as shown in the diagram below.

S498  
T37N  
S34|S35  
S2|S3  
T36N  
CPI-1975  
WC 118 LINKS

(c)(d)(e) PLAN VIEW OF CORNER WITH TIES TO AT LEAST 4 WITNESS MONUMENTS. IF IN DISAGREEMENT WITH PREVIOUSLY ESTABLISHED CORNER, SHOW THE DISTANCE BETWEEN THE TWO CORNERS AND ALSO INDICATE THE TIES TO THE DISPUTED CORNER.

BEARINGS BASED ON THE WEST LINE  
OF THE SE 1/4 OF SECTION 34-37-10  
AND ONEIDA COUNTY GPS INFORMATION  
ACCEPTED AS: N 00°24'46" E.

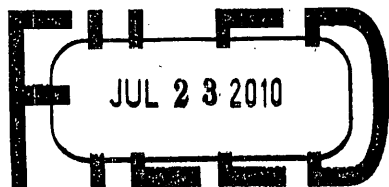
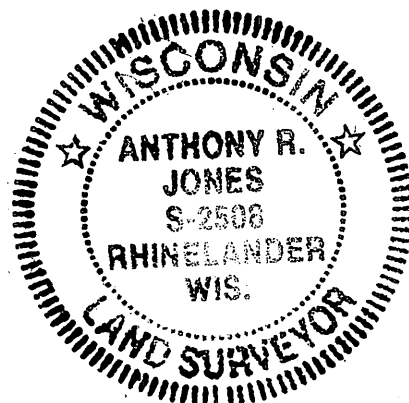
- 1: FD 1" IP ACCEPTED BY HANSEN (1975) AS SE COR. OF SECTION
- 2: FOUND 2 1/2" IRON PIPE W/BRASS CAP STAMPED FOR WITNESS CORNER  
N 45°25'35" E, 77.27' (118 LKS)
- 3: SET 1 1/4" x 18" IRON PIPE  
N 28°55'10" E, 47.19'
- 4: SET 60d NAIL IN 10" SPRUCE  
S 01°53'24" W, 22.42'
- 5: SET 60d NAIL IN POLE 3610-3E1 (S3 B.D.)  
S 58°29'24" E, 20.88'



Set plastic post 1' south.  
Distances to tree and utility pole are to 60d spike in the side of tie.  
Bearings to tree and utility pole are to center of tie.

(I) I, ANTHONY R. JONES, REGISTERED LAND SURVEYOR NO. S-2508 HEREBY CERTIFY THAT THE CORNER LOCATION ON THIS RECORD WAS DETERMINED BY ME OR UNDER MY DIRECTION AND CONTROL AND THAT THIS U.S. PUBLIC LAND SURVEY MONUMENT RECORD IS CORRECT AND COMPLETE TO THE BEST OF MY KNOWLEDGE AND BELIEF.

*[Signature]*  
SIGNATURE REGISTER OF DEEDS OFFICE ONEIDA COUNTY, WIS. DATE 7/16/10



At \_\_\_\_\_ O'Clock \_\_\_\_\_ M  
THOMAS H. LEIGHTON  
REGISTER OF DEEDS

3710340000

INDEX NO. 217