

CERTIFIED LAND CORNER RESTORATION

Index No. **X-17**

3710342000

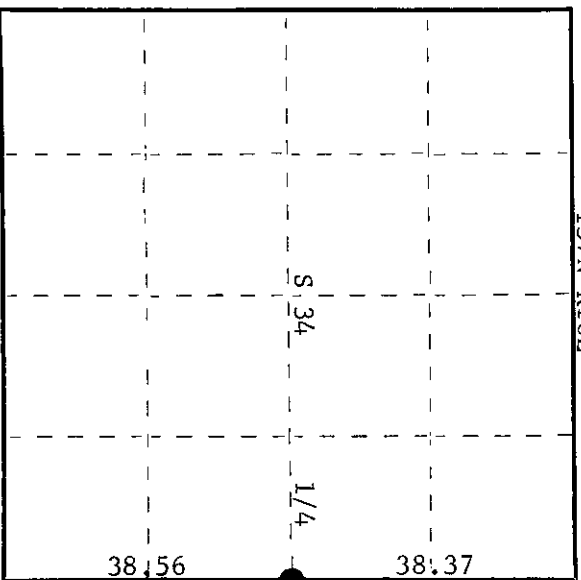
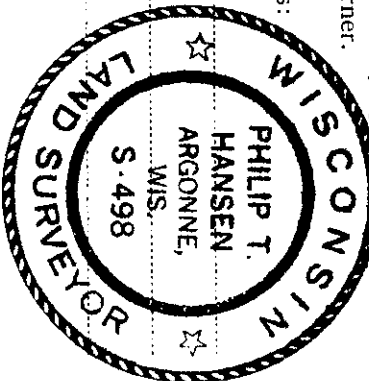
State of Wisconsin

County of Oneida } ss.

I Philip T. Hansen, do hereby certify that on the 19th day of August, 1975, I found evidence of the Quarter corner of Sections 34 and 35 Township 37 North, Range 10 East, Fourth Principal Meridian, as described hereon; and that from this evidence I established a new monument and accessories as described hereon to perpetuate the original location of this corner.

Resident witnesses:

Glen Barker
Jim Clarlin



○ = Corner monument restored.

History of original corner establishment:

H.C. Lawrence, Registered Land Surveyor, recovered an old post scribed for witness corner 50 links west of the center line of the N-S road. The point, in center of road, he found to be 38.56 chains north of the Section Corner on town line, which he had previously recovered and restored. Set a new 4" cedar post in place of the wooden witness post.

Description of corner evidence found:

Recovered Lawrence's 4" cedar post, squared and scribed W.C. 1/4S S35, 50 links W. S34 in fair condition.

Description of monument and accessories I established to perpetuate the original location of this corner.

Replaced 4" cedar witness post with 2-1/2" iron pipe w/brass cap stamped -

S498
T37N R10E

This was found in fair condition.

NBT's: White birch 6" S44°W 118 links-scribed 1/4 BT
Highline pole #37-10-3421 S18°W 127.4 links

S34 | S35

1/4 W.C.
50 links E.
CPI-1975

Measurements from BT's are to the true corner.

Dated at Rhineland, Wis., this 3rd day of September, 1975

Signature Philip T. Hansen Title Registered Land Surveyor Registration No. S-498
(County Surveyor, Registered Land Surveyor, or other duly authorized official)

Office of Register of Deeds, County of Oneida
Instrument was filed in this office for record on the 14th day of October, 1975
at 2:00 o'clock P. M. I hereby certify that the within

Doni Savage Fuchs
(Register of Deeds)

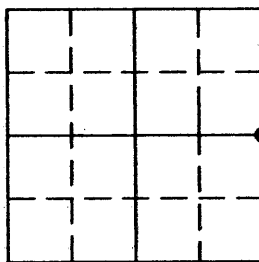
By: _____ Deputy

U.S. PUBLIC LAND SURVEY MONUMENT RECORD

Note: This form is intended and designed to fulfill all requirements of the Wisconsin Administrative Code, Chapter A-E 7.08 U.S. Public Land Monument Record (3)(a)(b)(c)(d)(e)(f)(g)(h)(i). An additional sheet may be added if necessary to conform with said requirements.

(a) CORNER LOCATION: Oneida County Corner I.D. No.:

East 1/4 Corner, Sec. 34 3710342000
Township 37 North
Range 10 East
Town of Stella
County of Oneida



SECTION 34

(f)(g)(h) DESCRIPTION OF MONUMENT FOUND AT THIS CORNER AND IF IT WAS ACCEPTED, STATE ALL EVIDENCE (MATERIAL, TESTIMONIAL, OCCUPATIONS, PLATS, RECORDS, OTHER MONUMENTS) USED AS A BASIS FOR ESTABLISHING LOCATION. IF NOT ACCEPTED OF IF NOTHING WAS FOUND, STATE EVIDENCE USED AS BASIS FOR ESTABLISHING LOCATION. IF REESTABLISHED THROUGH LOST CORNER PROPORTIONATE METHODS, INDICATE ALL MONUMENTS, DISTANCES AND DIRECTIONS USED TO ESTABLISH. INDICATE TYPE OF MONUMENT AND SIGN POST FOUND OR SET.

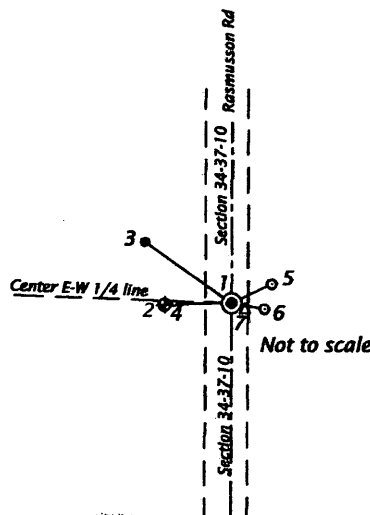
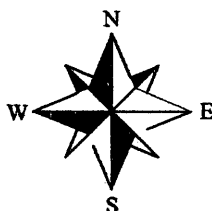
- 1863 - W.E. Daugherty set 1/4 post 40.00 chains north of southeast corner post. Set ties: 12" white pine, N35°W, 20 links, 10" yellow pine, S30°E, 18 links
- 1915 - D.H. Vaughn, County Land Surveyor, reset 4x4 cedar post from ties. Set additional ties: 4x4 cedar post 50 links east and west of corner post.
- 1946 - H.C. Lawrence, Registered Land Surveyor, recovers old post, scribed for witness corner, 50 links west of center of N-S road. The point, in center of road, he found to be 38.56 chains north of the section corner on town line, which he had previously recovered and restored. Set a new 4" cedar post in place of the wooden witness post.
- 1975 - Philip Hansen, Registered Land Surveyor recovers Lawrence's 4" cedar post, squared and scribed W.C. 1/4S, 50 links W. S34 in fair condition. Set 2 1/2" iron pipe w/ brass cap stamped for witness corner. Set additional ties: 6" white birch, S44°W, 118 links, scribed 1/4 BT, highline pole #37-10-3421 S18°W, 127.4 links.
- 1997 - Glen Barker, Registered Land Surveyor recovers P.K Nail in road with reference corner. See map B3658 as filed in the Oneida County Land Information Office. No ties.
- 2000 - Keith A. Zarm, Registered Land Surveyor, calls out a found PK Nail in road 33' east of brass capped reference monument. See map B4458 as filed in the Oneida County Land Information Office. No ties.
- 2007 - Russell F. Brown, Registered Land Surveyor, resets Mag Nail from C.P.I. Map No. B3658. See map B6628 as filed in the Oneida County Land Information Office. No ties
- July 1, 2010 - Anthony R. Jones, Registered Land Surveyor, finds PK nail in road, severely bent and nearly out of the blacktop. Nail is in dischord with map by Barker (B3658) and Zarm (B4458) and witness corner. See diagram below. Reset corner with 4" spike provided by Oneida County Land Information Office to conform to Barker and Zarm maps and witness corner.

S498
T37N R10E
S34 | S35
| W.C.
50 LINKS E.
CPI-1975

(c)(d)(e) PLAN VIEW OF CORNER WITH TIES TO AT LEAST 4 WITNESS MONUMENTS. IF IN DISAGREEMENT WITH PREVIOUSLY ESTABLISHED CORNER, SHOW THE DISTANCE BETWEEN THE TWO CORNERS AND ALSO INDICATE THE TIES TO THE DISPUTED CORNER.

BEARINGS BASED ON THE WEST LINE OF THE SE 1/4 OF SECTION 34-37-10 AND ONEIDA COUNTY GPS INFORMATION ACCEPTED AS: N 00°24'46" E.

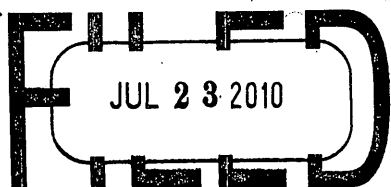
- 1: SET 4" SPIKE WITH ENGRAVED "+"
AS PROVIDED BY ONIEDA CO. LIO
- 2: FOUND 2 1/2" IRON PIPE W/BRASS
CAP STAMPED FOR WITNESS
CORNER
S 88°26'58" W, 30.00' (50 LKS)
SET PLASTIC POST
- 3: SET 1 1/4" x 18" IRON PIPE
N 54°34'19" W, 52.29'
- 4: FOUND 1" IRON PIPE BY BROWN
S 89°43'40" W, 28.11'
- 5: SET 60d NAIL 9" TWIN MAPLE
S 64°37'14" E, 21.79'
- 6: SET 60d NAIL IN 12" WHITE BIRCH
S 79°27'00" E, 16.41'
- 7: FOUND PK NAIL IN ROAD, BENT
AND NEARLY PULLED OUT
S 79°10'46" E, 0.63'



Distances are to 60d spike in side of tree.
Bearings are to center of trees

(I) I, ANTHONY R. JONES, REGISTERED LAND SURVEYOR NO. S-2508 HEREBY CERTIFY THAT THE CORNER LOCATION ON THIS RECORD WAS DETERMINED BY ME OR UNDER MY DIRECTION AND CONTROL AND THAT THIS U.S. PUBLIC LAND SURVEY MONUMENT RECORD IS CORRECT AND COMPLETE TO THE BEST OF MY KNOWLEDGE AND BELIEF.

SIGNATURE _____ DATE _____
REGISTER OF DEEDS OFFICE
ONEIDA COUNTY, WIS.



At _____ O'Clock _____ M
THOMAS H. LEIGHTON
REGISTER OF DEEDS



3710342000

INDEX NO. X 17