

U.S. PUBLIC LAND SURVEY MONUMENT RECORD

Instructions: This record shall show the location of the corner and shall include all of the following nine elements (a through i).

(a) Identify the corner by reference to the U.S. public land survey system.

○ = Corner monument restored.

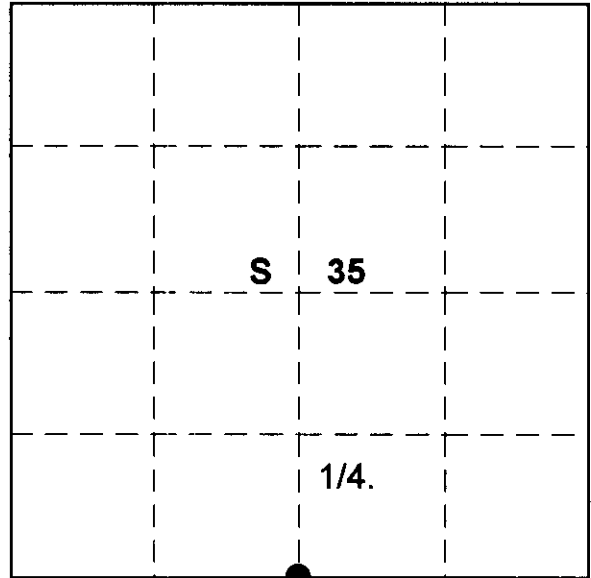
South 1/4 Corner

Sec. 35, T 37 N, R 10 E

Type of Monument:

1" X 18" Iron Pipe

2 1/4" Alum. Pipe W/ 3/4" Alloy Cap.



ONEIDA COUNTY

(b) Describe any record evidence, monument evidence, occupational evidence, testimonial evidence or any other material evidence you considered, and whether the monument was found or placed.

Original Survey established in 1860 by Hiram Fellows, Gov't Deputy Surveyor from which Birch 12" bears S15E lks. And Birch 9" bears N38W 28 lks.

In 1899 D.H Vaughan Country Surveyor found original evidence and marked White Pine stump N63W 7lks.

In 1950 H.C. Lawrence R.L.S. recovered Vaughans pine stump and set a witness post South 14 lks. As corner fell in town road.

Recovered Lawrences post and set a 1"X18" iron pipe North 14 lks. 8" below road surface. Also set a 2 1/4" Alum. Pipe W/ 3/4" Alloy cap for reference corner 15.0" South

(c) In the plan view drawing below, provide reference ties to at least 4 witness monuments, or, if the location is within a municipality, to at least 2 witness monuments. (Witness monuments shall be made of concrete, natural stone, iron or other equally durable material).

Describe witness monuments:

(d) Show a plan view drawing depicting the relevant monuments and reference ties which is sufficient in detail to enable accurate relocation of the corner monument if the corner monument is disturbed. Indicate north.

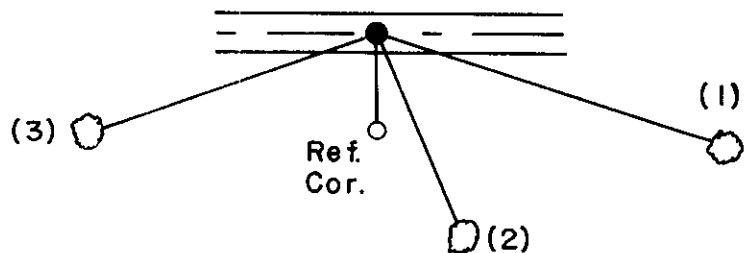
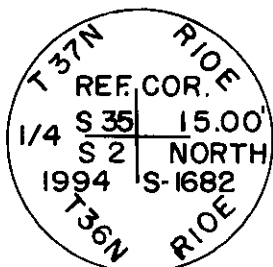
- O-Reference corner South, 15.00'
- (1) 7" Jack Pine, S 72°E, 57.75'
- (2) 6" Jack Pine, S 23°E, 35.65'
- (3) 5" Jack Pine, S 71°W, 48.38'



Monument Set

1"X 18" I.P

2 1/4" Alum. Pipe W/ 3/4" Alloy cap

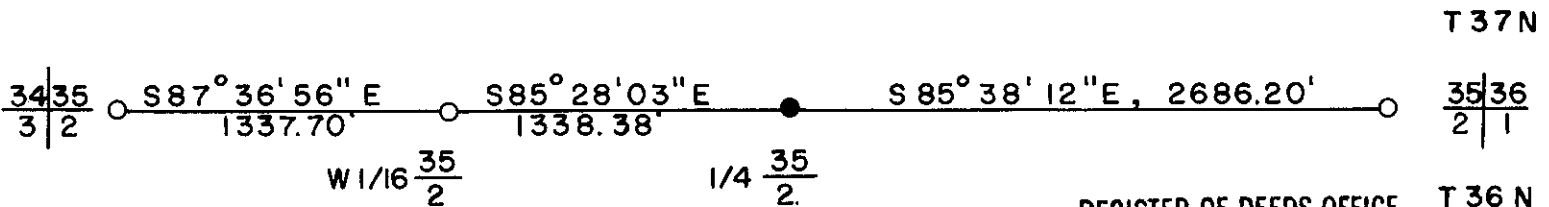


(e) Describe any material discrepancy between the location of the corner as restored or reestablished and the location of that corner as previously restored or reestablished by distance and direction. Show the discrepancy on the plan view drawing under (d), above. Show the distances between the corner as previously restored or reestablished and (1) the corner as restored or reestablished, and (2) to at least 2 of the witness monuments shown on the drawing in (d), above.

(f) Was the corner restored through acceptance of (1) an obliterated evidence location, or, (2) a found perpetuated location?

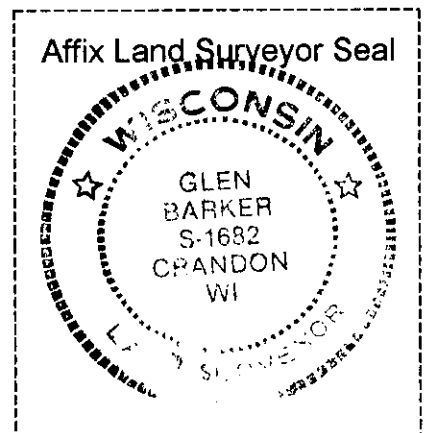
Perpetuated location.

(g&h) Was the corner reestablished through lost corners proportionate methods? If so, show the method, including the directions and distances to other public land survey corners used as evidence or used for proportioning in determining the corner location?



REGISTER OF DEEDS OFFICE
ONEIDA COUNTY, WIS
FILED
MAY 5 1995
At _____ O'Clock _____ M
THOMAS H. LEIGHTON
REGISTER OF DEEDS

(i) I, Glen Barker
(type or print name) certify that the corner location shown on this record was determined by me or under my direction and control and that this U.S. Public Land Survey Monument is correct and complete to the best of my knowledge and belief.



Glen Barker
Signature

3/6/95
Date

35 37 10 E
SEC TWN RNG