

CERTIFIED LAND CORNER RESTORATION

Index No. A-23

State of Wisconsin }
County of Oneida } ss.

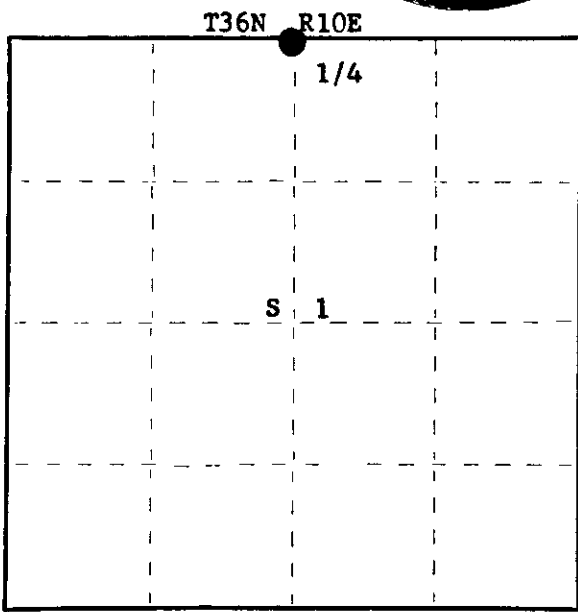
I, Philip T. Hansen, do hereby certify that on the 23rd day of February, 1978, I found evidence of the Quarter corner of Sections 1 & 36 Township 36 & 37, North, Range 10 East, Fourth Principal Meridian, as described hereon; and that from this evidence I established a new monument and accessories as described hereon to perpetuate the original location of this corner.

Resident witnesses:

Glen Barker

Jim Claflin

Herb Wagoner



○ = Corner monument restored.

History of original corner establishment: **Original corner established by Hiram C. Fellows, Government Deputy Surveyor, in 1859, from which Fir 10" bears N59°E, 36 links; Fir 10" bears S65°W, 23 links.**

Corner re-established by D.H. Vaughan, County Surveyor, in 1906, from which pine bears S72°E, 24½ links.

Corner recovered by H.C. Lawrence, Registered Land Surveyor, in 1949. Found portion of old post and old BT's - White Pine stump 30" which bears S83°W, 43 links, scribed 1/4 BT; Pine stump S72°E, 24½ links. Set new cedar post in old post hole.

Description of corner evidence found:

Recovered H.C. Lawrence's 6" cedar post, squared and scribed S1 T36N - 1/4S - S36 T37N - 1/4S R10E, standing in poor condition.

Recovered OBT stump - White Pine stump 30" S83°W, 43 links, now rotted.

Description of monument and accessories I established to perpetuate the original location of this corner.

Replaced H.C. Lawrence's post with a 2½" Berntsen A-1 Federal Monument with alloy cap, stamped:

Monument projects 8" above ground.

- NBT's - White Spruce 12" N42°E, 37.4 links**
- White Spruce 8" S86°E, 27.5 links**
- White Spruce 6" N46°W, 55.7 links**
- White Birch 9" S81°W, 27.9 links**
- Scribed 1/4 BT**

S498
T37N R10E
1/4 S | 36
S | 1
T36N R10E
1978

Dated at Rhineland Wis., this 2nd day of March, 1978

Signature: Philip T. Hansen Title **Registered Land Surveyor** Registration No. **S-498**
(County Surveyor, Registered Land Surveyor, or other duly authorized official)

Office of Register of Deeds, County of Oneida, I hereby certify that the within instrument was filed in this office for record on the 13th day of March, 1978 at 2:30 o'clock P. M.

Louis Verage Kuchel
(Register of Deeds)

By.....Deputy

FORM 985 M. C. MILLER CO. MILWAUKEE

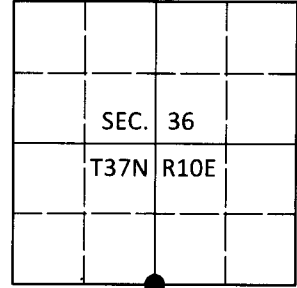
37 2810360020

U.S. PUBLIC LAND SURVEY MONUMENT RECORD

Note: This form is intended and designed to fulfill all requirements of Wisconsin Administrative Code, Chapter A-E 7.08 U.S. Public Land Survey Monument Record (3)(a-i).

(a) CORNER LOCATION
 1/4 Cor. of Secs. 1 & 36
 Township 36 & 37 North
 Range 10 East of the 4th P.M.
 Town of Monico & Stella
 County of Oneida

WISCRS - Oneida County
 N: 165,573.41 USft
 E: 320,447.81 USft
 Datum: NAD 83(2011)
 GNSS Method: RTN - Direct
 GNSS Control: WISCRS VRS



(b) HISTORY OF ORIGINAL CORNER ESTABLISHMENT

Original Surveyor:

Original Accessories:

Date of Survey Commenced:
 Completed:

See previous USPLS Monument Record

(b)(f)(g)(h) Description of monument found at this corner and if it was accepted, state all evidence (material, testimonial, occupational, plats, records, other monuments) used as a basis for accepting. If not accepted or if nothing was found, state evidence used as basis for establishing location. If re-established through lost corner proportionate methods, indicate all monuments, distances and directions used to establish. Indicate type of monument and sign post found or set.

This is a perpetuation of a previous USPLS Monument Record by Philip T. Hansen, RLS dated Mar. 2, 1978 and filed in the office of the Oneida County Register of Deeds. A complete history of the corner can be found on the previous monument record. I accept the previous location as a true and faithful perpetuation or reestablishment of the original corner location and further perpetuate it as follows.

Sep. 13, 2018: I found and accepted the record monument, a 2-1/2" diam. aluminum pipe with a 3-1/4" diam. Oneida Co. aluminum cap projecting 12" above the ground surface. All of the record bearing trees are gone. I found or established accessories as shown below. I set a white vinyl sign post bearing Southwest, 1.0 ft.

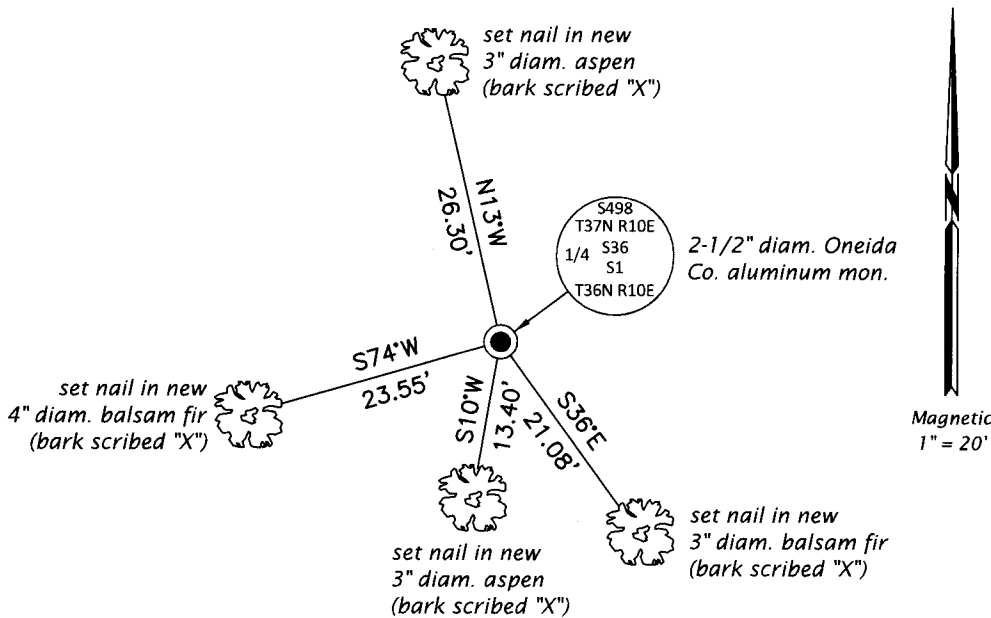
The coordinate value shown has been verified by at least one of the following methods: 1) comparison to a previously GPS determined published value; 2) the value is the average of two or more GPS observations at a markedly different time; 3) one or more distances were measured back to the GPS observed corner from temporary GPS observed offset locations.

REGISTER OF DEEDS OFFICE
 ONEIDA COUNTY
 FILED

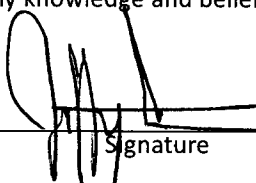
DEC 31 2018

KYLE J. FRANSON
 REGISTER OF DEEDS

(c)(d)(e) Plan view of corner with ties to at least 4 witness monuments. If in disagreement with previously established corner, show the distances between the two corners and also indicate the ties to the disputed.



(i) I, Jeffrey W. Austin, Professional Land Surveyor No. S-1885, hereby certify that the corner location on this record was determined by me or under my direction and control and that this U.S. Public Land Survey Monument Record is correct and complete to the best of my knowledge and belief.


 Signature

13 DEC 2018
 Date