

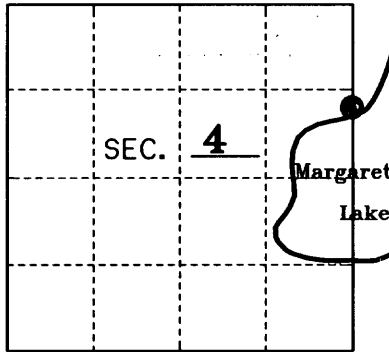
U.S. PUBLIC LAND SURVEY MONUMENT RECORD

Note: This form is intended and designed to fulfill all requirements of Wisconsin Administrative Code, Chapter A-E 7.08 U.S. Public Land Monument Record (3)(a)(b)(c)(d)(e)(f)(g)(h)(i). An additional sheet may be added if necessary to conform with said requirements. Deeds Square

(a) CORNER LOCATION: East Line
North Meander Corner of Section 4
 Township 37 North, Range 11 East
 Township/City Piehl
 County of Oneida

(b) HISTORY OF ORIGINAL ESTABLISHMENT
 Original Surveyor: William E. Daugherty
 Date of Survey: August 1859
 Original B.T.'s: Original not set here

Established by J.A. Melendy in 1910
 5" Spruce N 17°W 48-1/4 lks.



County or State Plane Coordinates
 Northing _____
 Easting _____
 Datum Base _____

REGISTER OF DEEDS OFFICE
 ONEIDA COUNTY, WIS.

FILED
 JAN 10 2011

At _____ O'Clock _____ M
THOMAS H. LEIGHTON
 REGISTER OF DEEDS

(b)(f)(g)(h) Description of monument found at this corner and if it was accepted, state all evidence (material, testimonial, occupational, plats, records, other monuments) used as a basis for accepting. If not accepted or if nothing was found, state evidence used as basis for establishing location. If reestablished through lost corner proportionate methods, indicate all monuments, distances and directions used to establish. Indicate type of monument and sign post found or set.

August 8 September 1910: J.A. Melendy performs a survey for Mineapolis Cedar and Lumber Co. and set a Balsam Post as the meander corner on the North Shore of Margaret Lake on line between the Section corner to the North and 1/4 corner to the South. He lists one BT: 5" Spruce N 17°W 48-1/4 lks. See Oneida County Survey file A361 & L533.

No Date: Consolidated notes for Section 3 state "See Melendy's Notes and Blueprint". See Oneida County Consolidated notes 365.pdf.

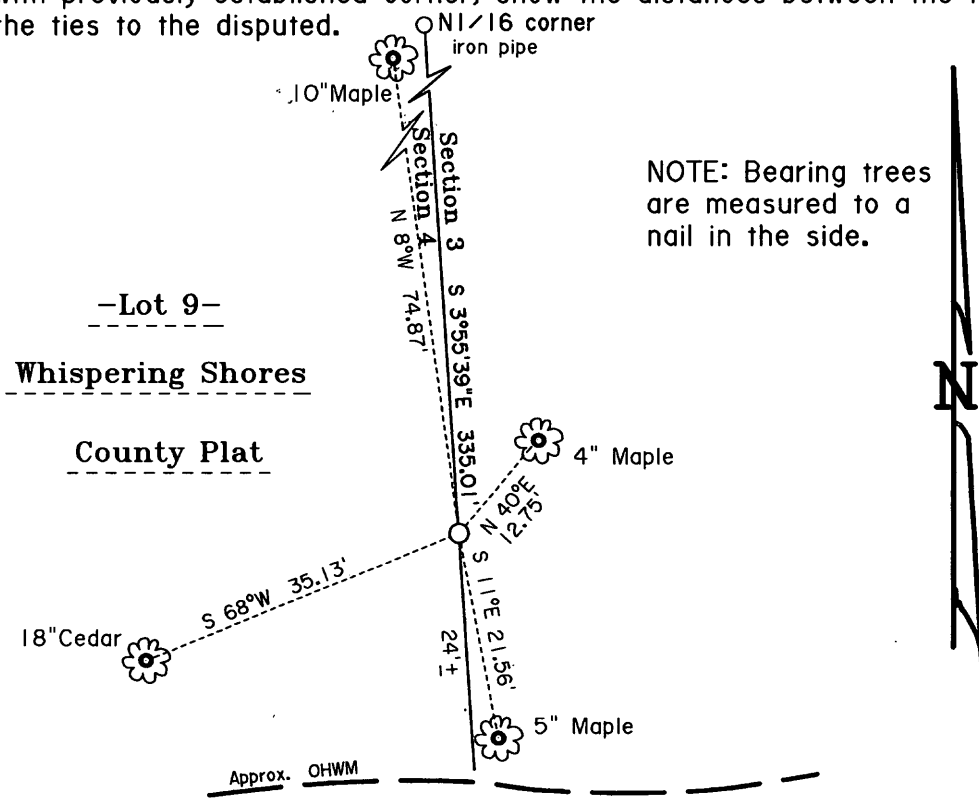
2/15/2004: Michael E. Weber of Eagle Landmark Surveying while working in the SE-NE of Section 3 found a Consolidated brass capped iron pipe and also found Melendy's post at the N1/16 corner North of this MC. See Oneida County Surveyor file No. B5840.

4/17/06: Kip Soder of Soder Surveying also finds and accepts the corners found by Weber in 2004. See Oneida County Surveyor file No. B6455.

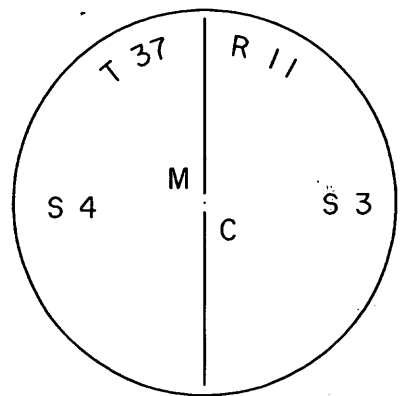
12/1/2005: Michael E. Weber records the Plat of Whispering Shores accepting the Consolidated corner as the MC.

May 11, 2009: I, Thomas A. Boettcher, found the above described Consolidated 1-1/2" iron pipe with a brass cap stamed as shown below 24 feet North of the OHWM of Margaret Lake. I could not find any existing BT's so I made four new BT's as shown below with lower blazes only since on private land. I set a plastic guard post 6" South of the corner.

(c)(d)(e) Plan view of the corner with ties to at least 4 witness monuments. If in disagreement with previously established corner, show the distances between the two corners and also indicate the ties to the disputed.



NOTE: Bearing trees are measured to a nail in the side.



(i) I, Thomas A. Boettcher Margaret Lake R.L.S. No. 1763

hereby certify that the corner location on this record was determined by me or under my direction and control and that this U.S. Public Land Survey Monument Record is correct and complete to the best of my knowledge and belief.

Signature [Handwritten Signature] Date December 16, 2010

WISCONSIN
 THOMAS A. BOETTCHER
 S-1763
 EAGLE RIVER WIS.
 LAND SURVEYOR

Index No. 3711042700