

CERTIFIED LAND CORNER RESTORATION

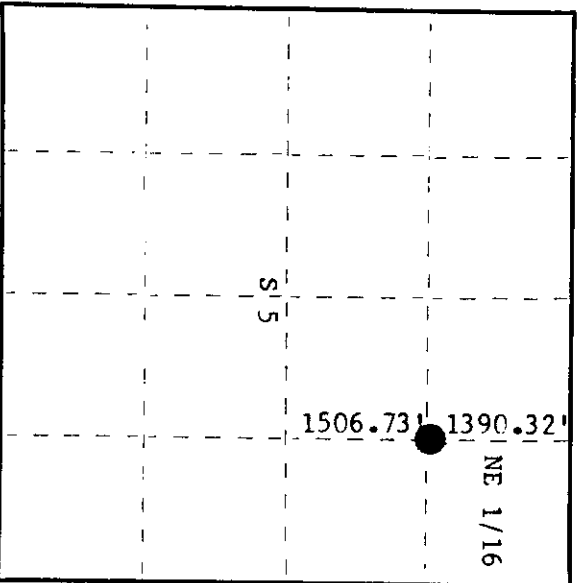
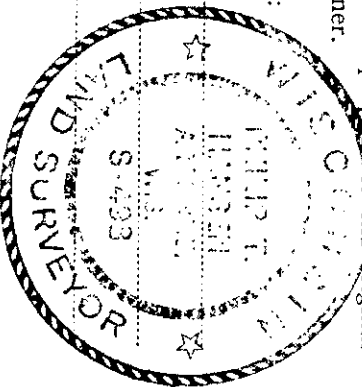
Index No. B-8

State of Wisconsin

County of Oneida } ss.

I, Phillip T. Hansen, do hereby certify that on the 29th day of January, 1980, I ~~found~~ re-established the NE 1/16 corner of Section 5 Township 37 North, Range 11 East, Fourth Principal Meridian, as described hereon; and that from this evidence I established a new monument and accessories as described hereon to perpetuate the original location of this corner.

Resident witnesses:
Glen Barker
Jim Clafflin
Herb Wagoner



○ = Corner monument restored.

History of original corner establishment:

No records of any previous survey.

Description of corner evidence found:

No evidence of any corner recovered.

Corner established by traverse and computation. Computed distance from E 1/16 between section 5 and 32 to EC 1/16 corner is 2899.05 feet at bearing S 6° 02' 52" E.

Computed location of NE 1/16 corner is 1390.32' S 6° 02' 52" E of E 1/16 and 1506.73' N 6° 02' 52" W of EC 1/16.

Description of monument and accessories I established to perpetuate the original location of this corner.

Set a 1-1/2" iron pipe with 2" brass cap, projecting 13", stamped:

Marked NBT's -
B. Spruce 4" N53°E 98.45 feet.
Tamarack 4" S89°W 109.16 feet.
both scribed 1/16 BT.

S498
T37N R11E
NE 1/16 S+5
CPI-1980

Dated at Rhineland, Wis., this 25th day of February, 1980

Signature: Phillip T. Hansen Title: Registered Land Surveyor Registration No. S-498
(County Surveyor, Registered Land Surveyor, or other duly authorized official)

Office of Register of Deeds, County of Oneida I hereby certify that the within instrument was filed in this office for record on the 10th day of March, 1980 at 9:10 o'clock A.M.

By: Louis George Fuchs Deputy
(Register of Deeds)