

CERTIFIED LAND CORNER RESTORATION

Index No. **E-2**

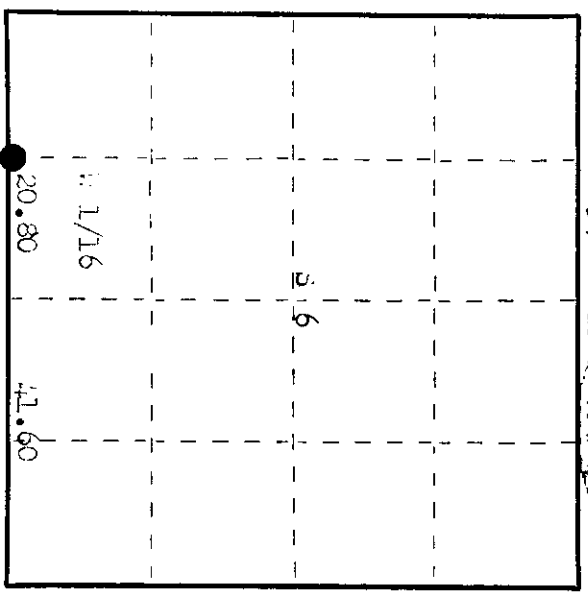
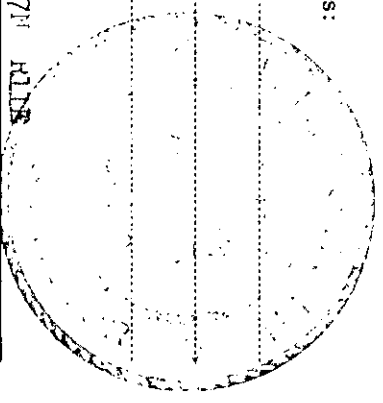
State of Wisconsin }
 County of Oneida } ss.

I, Philip P. Rhineland, do hereby certify that on the 10th day of September, 1976, I found evidence of the 1/16 corner of Section 6 and 7 Township 27, North, Range 11, as described hereon; and that from this evidence I established a new monument and accessories as described hereon to perpetuate the original location of this corner.

Resident witnesses:

John P. Rhineland

John P. Rhineland



○ = Corner monument restored.

History of original corner establishment:

Corner established by P.O. Lawrence, registered land surveyor, in 1900, with a random line of 87° from section corner 5, 6, 7 and 8, 93.00 chains closing and 3.30 chains north of 5, corner, corrected bearing of 89° 24' 11\". A set cedar post at 0.45 links south of 0.40 chains, east of 5, corner. No record of this set.

Description of corner evidence found:
 Restored 4\" cedar post, squared and scribed 1/16 06, 1/16 07, in fair condition. No evidence of any other set.

Description of monument and accessories I established to perpetuate the original location of this corner.
 Replaced 4\" cedar post with 1\" OD iron pipe with brass cap stamped.
 Monument projects 24\" above ground.
 Nails - 6x10 7\" x 590 = 23.1 links, scribed 1/16 BT.
 Nail 6\" x 34 = 39 links, scribed 1/16 BT.
 Monument and Nails painted blue.
 3498
 T37N R11E
 1/16 216
 517
 QP1-1976

Dated at Rhineland, Wis., this 21st day of September, 1976.

Signature Philip P. Rhineland Title Registered Land Surveyor Registration No. 2-498
 County Surveyor, Registered Land Surveyor, or other duly authorized official

Office of Register of Deeds, County of Oneida
 at 10:30 o'clock A. M. 9th day of November, 1976.
 I hereby certify that the within instrument was filed in this office for record on the 9th day of November, 1976.

Debra Virginia Keehn
 (Register of Deeds)

By: _____ Deputy

3711060030