

CERTIFIED LAND CORNER RESTORATION

Index No. J-5

State of Wisconsin }
County of Oneida } ss.

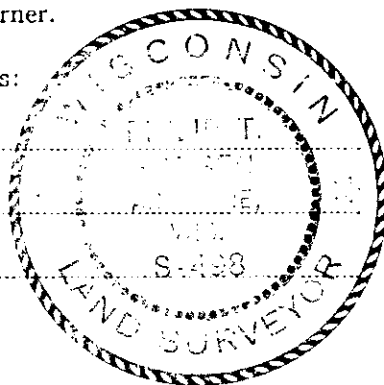
I, Philip T. Hansen, do hereby certify that on the 16th day of February, 1978, I found evidence of the Section corner of Sections 7 - 8 - 17 - 18 Township 37, North, Range 11 East, Fourth Principal Meridian, as described hereon; and that from this evidence I established a new monument and accessories as described hereon to perpetuate the original location of this corner.

Resident witnesses:

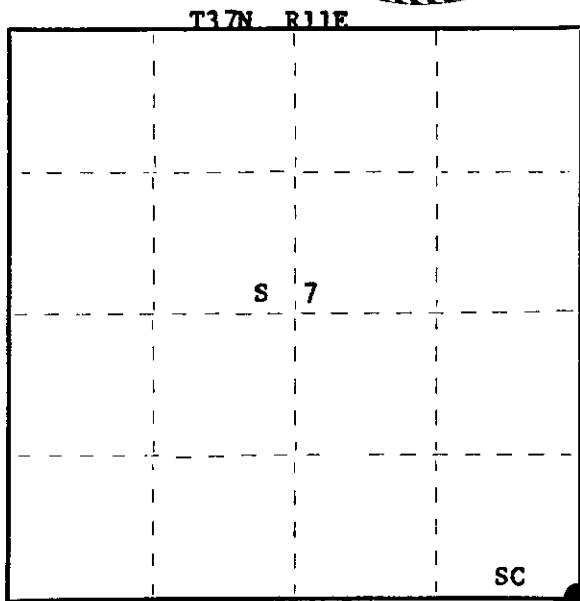
Glen Barker

Jim Claflin

Herb Wagoner



FORM 985 M. C. MILLER CO., MILWAUKEE



○ = Corner monument restored.

History of original corner establishment:

Original corner established by Wm. E. Dougherty, Government Deputy Surveyor, in 1859, from which tamarack 7" bears S 9° E, 12 links; tamarack 6" N 2° W, 30 links.

Corner recovered by V.A. Maine, County Surveyor, in 1935. Recovered points of three old posts and stump of original BT, tamarack 7" S 9° E, 12 links, scribe marks plain.

Set iron pipe, stamped cap and marked NBT's - spruce 3" S 15° E, 64 links; spruce 3" S 61° W, 68 1/2 links.

Corner recovered by H.C. Lawrence, Registered Land Surveyor, in 1947. Set new tamarack post.

Description of corner evidence found:

Recovered Lawrence's 3" tamarack post squared and scribed S 7 - S 8 - S 17 - S 19, standing in very poor condition. Also an old post point beside post. Could not find Maine's iron pipe.

Evidence of only one BT remains, tamarack 5" S 53° W, 52.5 links, now a stump scribed S 18 BT.

Description of monument and accessories I established to perpetuate the original location of this corner.

Replaced Lawrence's post with a 2 1/2" Berntsen A-1 Federal Monument - cap stamped: Monument projects 12" above ground.

NBT's - tamarack 4" N 52° W, 126 links
tamarack 5" N 83° E, 121 links
tamarack 4" N 25° E, 130.7 links
tamarack 3" S 67° E, 77.9 links
scribed BT

S498
T37N
Sec. 7/18
1817
R11E
1978

Dated at Rhineland Wis., this 6th day of March, 1978.

Signature Philip T. Hansen Title Registered Land Surveyor Registration No. S-498
(County Surveyor, Registered Land Surveyor, or other duly authorized official)

Office of Register of Deeds, County of Oneida, I hereby certify that the within instrument was filed in this office for record on the 13th day of March, 1978 at 2:30 o'clock P. M.

Doris Terage Kuehn
(Register of Deeds)

By.....Deputy

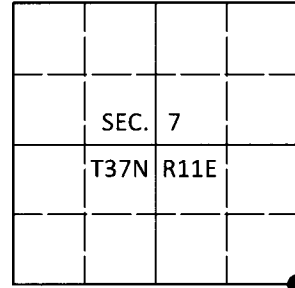
3711070600

U.S. PUBLIC LAND SURVEY MONUMENT RECORD

Note: This form is intended and designed to fulfill all requirements of Wisconsin Administrative Code, Chapter A-E 7.08 U.S. Public Land Survey Monument Record (3)(a-i).

(a) CORNER LOCATION
 Cor. of Secs. 7, 8, 17 & 18
 Township 37 North
 Range 11 East of the 4th P.M.
 Town of Piehl
 County of Oneida

WISCRS - Oneida County
 N: 186,027.42 USft
 E: 330,434.27 USft
 Datum: NAD 83(2011)
 GNSS Method: RTN - Direct
 GNSS Control: WISCORS VRS



(b) HISTORY OF ORIGINAL CORNER ESTABLISHMENT

Original Surveyor: _____ Original Accessories: _____
 Date of Survey Commenced: _____ See previous monument record(s)
 Completed: _____

(b)(f)(g)(h) Description of monument found at this corner and if it was accepted, state all evidence (material, testimonial, occupational, plats, records, other monuments) used as a basis for accepting. If not accepted or if nothing was found, state evidence used as basis for establishing location. If re-established through lost corner proportionate methods, indicate all monuments, distances and directions used to establish. Indicate type of monument and sign post found or set.

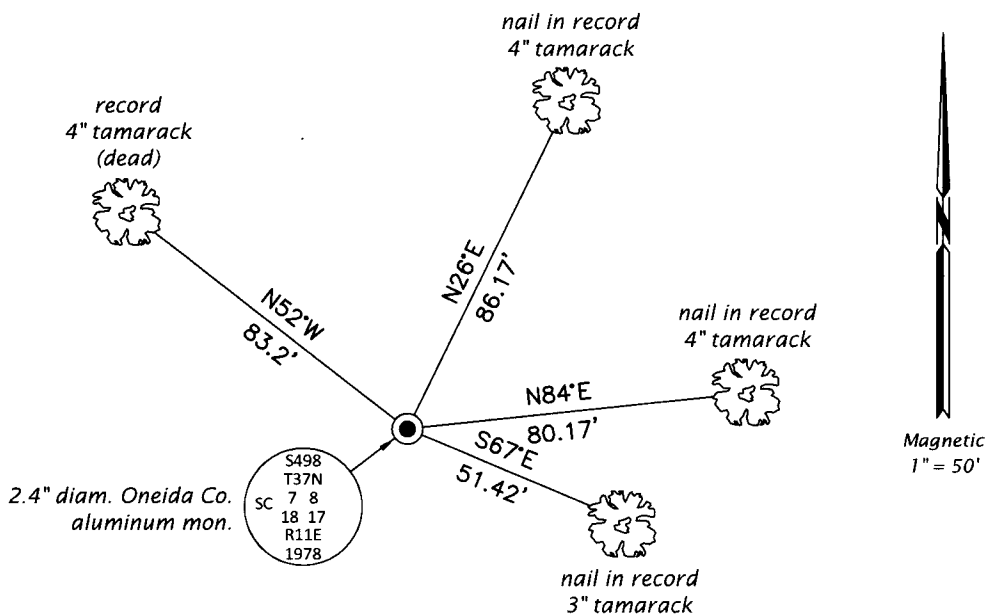
This is a perpetuation of the following monument record(s) that comprise a complete history of the corner:

Mar. 6, 1978: Certified Land Corner Restoration No. 3711070000 by Philip T. Hansen, RLS

Sep. 7, 2019: I found and accepted the record monument, a 2.4" diam. aluminum pipe with a 3.3" diam. Oneida Co. aluminum cap projecting 8" above the bog surface. I found or established accessories as shown below. I set a white vinyl sign post bearing North, 1.1 ft.

The coordinate value shown has been verified by at least one of the following methods: 1) comparison to a previously GPS determined published value; 2) the value is the average of two or more GPS observations at a markedly different time; 3) one or more distances were measured back to the GPS observed corner from temporary GPS observed offset locations.

(c)(d)(e) Plan view of corner with ties to at least 4 witness monuments. If in disagreement with previously established corner, show the distances between the two corners and also indicate the ties to the disputed.

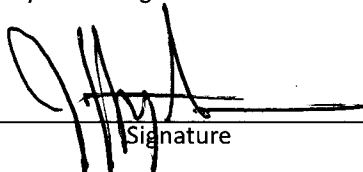


REGISTER OF DEEDS OFFICE
 ONEIDA COUNTY
 FILED

JAN 03 2020

KYLE J. FRANSON
 REGISTER OF DEEDS

(i) I, Jeffrey W. Austin, Professional Land Surveyor No. S-1885, hereby certify that the corner location on this record was determined by me or under my direction and control and that this U.S. Public Land Survey Monument Record is correct and complete to the best of my knowledge and belief.


 Signature

DEC 23, 2019
 Date