

CERTIFIED LAND CORNER RESTORATION

Index No. J-3

State of Wisconsin }
County of Oneida } ss.

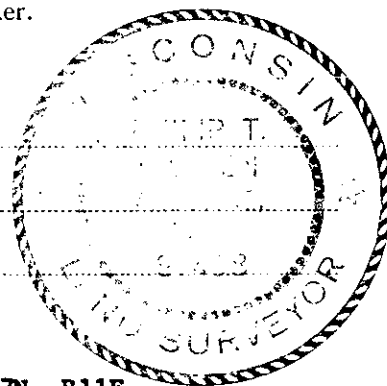
I, Philip T. Hansen, do hereby certify that on the 17th day of February, 19 78, I found evidence of the Quarter corner of Sections 7 & 18 Township 37, North, Range 11 East, Fourth Principal Meridian, as described hereon; and that from this evidence I established a new monument and accessories as described hereon to perpetuate the original location of this corner.

Resident witnesses:

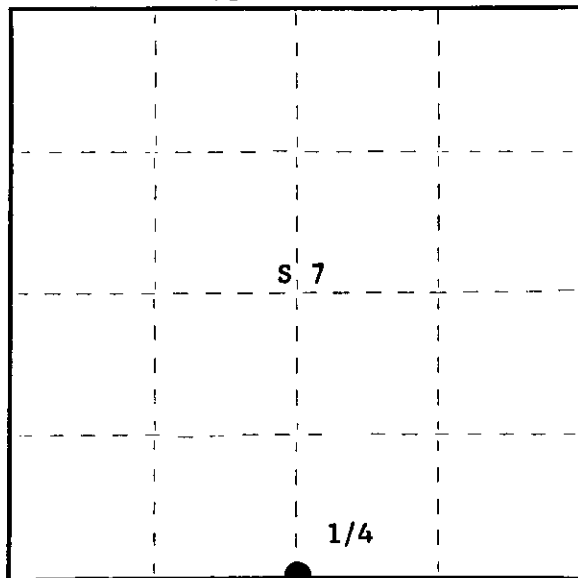
Glen Barker

Jim Claflin

Herb Wagoner



T37N R11E



○ = Corner monument restored.

History of original corner establishment:

Corner established by Wm. E. Dougherty, Deputy Surveyor, in 1859, from which tamarack 7" bears N4°E, 9 links; spruce 10" bears N15°E, 7 links.

Corner re-established by H.C. Lawrence, Registered Land Surveyor, in 1947. Set cedar post, NBT's - Cedar 7" S15°W, 44 links
Cedar 10" N31°W, 58½ links

Description of corner evidence found:

Recovered Lawrence's 6" cedar post, squared and scribed 1/4S - S7 - 1/4S - S18, standing in poor condition.

Recovered OBT's - Cedar 7" (10") S15°W, 44 links, scribing grown over Cedar 10" (12") N31°W, 58.5 links, scribed 1/4 S7 BT.

Description of monument and accessories I established to perpetuate the original location of this corner.

Replaced post with a 2½" Berntsen A-1 Federal Monument, cap stamped: Monument projects 8" above ground.
NBT's - Cedar 10" N36°E, 37.8 links
Cedar 10" S80°E, 45.6 links
scribed 1/4 BT

S498
T37N
S 7
S 18
R11E
1978

Dated at Rhineland, Wis., this 6th day of March, 19 78

Signature Philip T. Hansen Title Registered Land Surveyor Registration No. S-498
(County Surveyor, Registered Land Surveyor, or other duly authorized official)

Office of Register of Deeds, County of Oneida, I hereby certify that the within instrument was filed in this office for record on the 13th day of March, 19 78 at 2:30 o'clock P. M.

Doris Verage Kuehn
(Register of Deeds)

By.....Deputy

FORM 965 H. C. W. LER. CO., MILWAUKEE

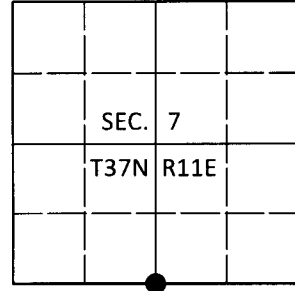
3711070020

U.S. PUBLIC LAND SURVEY MONUMENT RECORD

Note: This form is intended and designed to fulfill all requirements of Wisconsin Administrative Code, Chapter A-E 7.08 U.S. Public Land Survey Monument Record (3)(a-i).

(a) CORNER LOCATION
 1/4 Cor. of Secs. 7 & 18
 Township 37 North
 Range 11 East of the 4th P.M.
 Town of Piehl
 County of Oneida

WISCRS - Oneida County
 N: 186,064.33 USft
 E: 327,741.27 USft
 Datum: NAD 83(2011)
 GNSS Method: RTN - Direct
 GNSS Control: WISCORS VRS



(b) HISTORY OF ORIGINAL CORNER ESTABLISHMENT

Original Surveyor:

Original Accessories:

Date of Survey Commenced:
 Completed:

See previous monument record(s)

(b)(f)(g)(h) Description of monument found at this corner and if it was accepted, state all evidence (material, testimonial, occupational, plats, records, other monuments) used as a basis for accepting. If not accepted or if nothing was found, state evidence used as basis for establishing location. If re-established through lost corner proportionate methods, indicate all monuments, distances and directions used to establish. Indicate type of monument and sign post found or set.

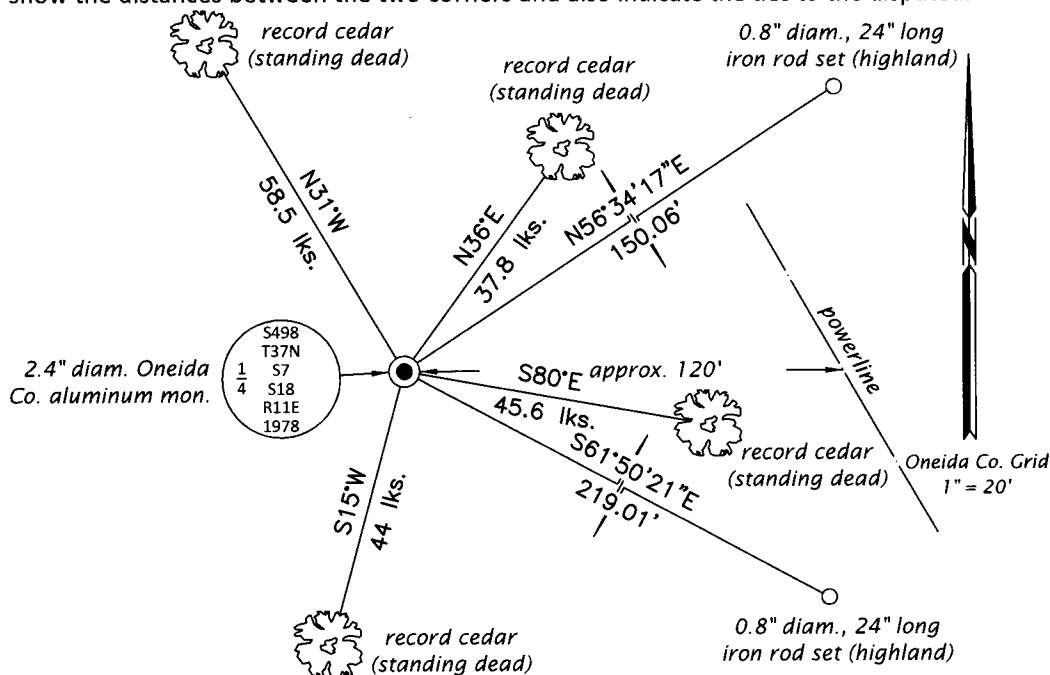
This is a perpetuation of the following monument record(s) that comprise a complete history of the corner:

Mar. 6, 1978: Certified Land Corner Restoration No. 3711070020 by Philip T. Hansen, RLS

Sep. 7, 2019: I found and accepted the record monument, a 2.4" diam. aluminum pipe with a 3.3" diam. Oneida Co. aluminum cap projecting 6" above the marsh surface (very wet). I found or established accessories as shown below. I set a white vinyl sign post bearing South, 0.7 ft.

The coordinate value shown has been verified by at least one of the following methods: 1) comparison to a previously GPS determined published value; 2) the value is the average of two or more GPS observations at a markedly different time; 3) one or more distances were measured back to the GPS observed corner from temporary GPS observed offset locations.

(c)(d)(e) Plan view of corner with ties to at least 4 witness monuments. If in disagreement with previously established corner, show the distances between the two corners and also indicate the ties to the disputed.



REGISTER OF DEEDS OFFICE
 ONEIDA COUNTY
 FILED

JAN 03 2020

KYLE J. FRANSON
 REGISTER OF DEEDS

(i) I, Jeffrey W. Austin, Professional Land Surveyor No. S-1885, hereby certify that the corner location on this record was determined by me or under my direction and control and that this U.S. Public Land Survey Monument Record is correct and complete to the best of my knowledge and belief.

[Handwritten Signature]
 Signature

DEC 23, 2019
 Date