

CERTIFIED LAND CORNER RESTORATION

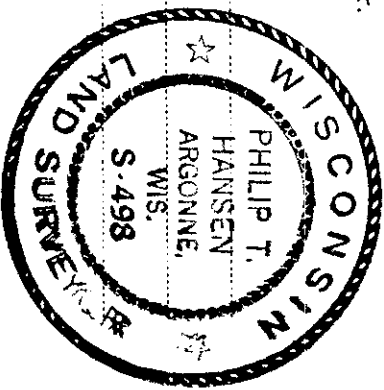
Index No. 5-9

State of Wisconsin } ss.

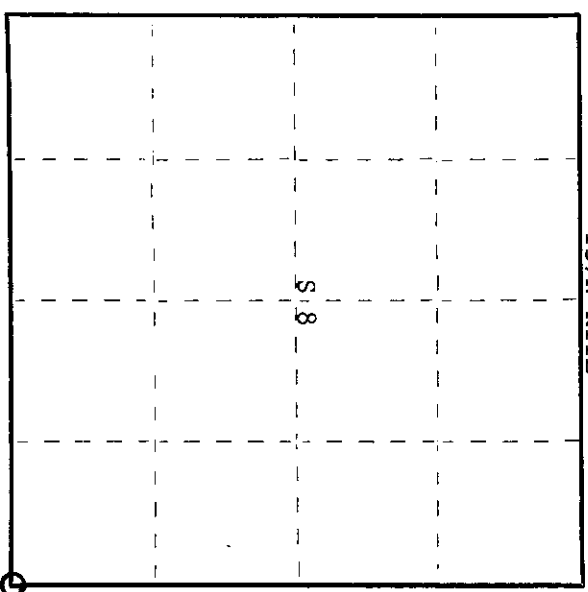
County of Oneida

I Philip T. Hansen do hereby certify that on the 17th day of April, 1975, I found evidence of the Section Corner corner of 8-9-16-17 Township 37 North, Range 11 East, Fourth Principal Meridian, as described hereon; and that from this evidence I established a new monument and accessories as described hereon to perpetuate the original location of this corner.

Resident witnesses:



T37N R11E



O = Corner monument restored.

History of original corner establishment:

Original corner established by Wm. E. Dougherty, Government Deputy Surveyor, in 1859, from which tamarack 10" bears S55E, 33 links, and white spruce 6" bears N45W, 20 links. (These bearing trees are the same as the originals for Section Corner one mile south.) Corner reestablished by V.M. Maine, County Surveyor, who claims to have found an original tamarack BT 12", S20E, 18 links. He set an iron pipe for this corner and established BT's, viz, white birch 8", N51W, 19 links and tamarack 4", N30E, 22 links. Corner recovered by H.C. Lawrence, Registered Land Surveyor, in 1947.

Description of corner evidence found:

Recovered 2-1/2" iron pipe with brass cap scribed T37 R11, S8, S9, S16, S17. Also an old picket beside iron pipe. No trace of wooden post.
Recovered old BT's (Maine's 1935) - white birch 10", N45W, 20 links, dead, but scribing S8 BT visible. Also tamarack 5", N30E, 22 links.

Description of monument and accessories I established to perpetuate the original location of this corner.

Set new BT's - Tamarack 7" S89W 38.2 links scribed SC BT
Tamarack 6" N45E 47.8 links scribed SC BT

Dated at Rhineland, Wis., this 7th day of May, 1975

Signature *Philip T. Hansen* Title Registered Land Surveyor Registration No. S-498
(County Surveyor, Registered Land Surveyor, or other duly authorized official) Oneida

Office of Register of Deeds, County of Oneida
Instrument was filed in this office for record on the 1st day of October, 1975
at 3:00 o'clock P.M.

Donna Terape Kuehn
(Register of Deeds)

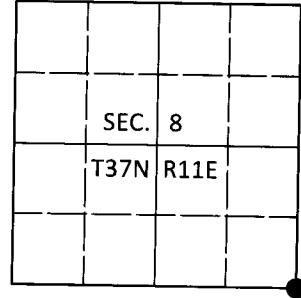
By Deputy

U.S. PUBLIC LAND SURVEY MONUMENT RECORD

Note: This form is intended and designed to fulfill all requirements of Wisconsin Administrative Code, Chapter A-E 7.08 U.S. Public Land Survey Monument Record (3)(a-i).

(a) CORNER LOCATION
 Cor. of Secs. 8, 9, 16 & 17
 Township 37 North
 Range 11 East of the 4th P.M.
 Town of Piehl
 County of Oneida

WISCRS - Oneida County
 N: 185,962.76 USft
 E: 335,834.88 USft
 Datum: NAD83(2011)
 GNSS Method: RTN - Direct
 GNSS Control: WISCORS VRS



(b) HISTORY OF ORIGINAL CORNER ESTABLISHMENT

Original Surveyor: _____ Original Accessories: _____
 Date of Survey Commenced: _____ see previous monument record
 Completed: _____

(b)(f)(g)(h) Description of monument found at this corner and if it was accepted, state all evidence (material, testimonial, occupational, plats, records, other monuments) used as a basis for accepting. If not accepted or if nothing was found, state evidence used as basis for establishing location. If re-established through lost corner proportionate methods, indicate all monuments, distances and directions used to establish. Indicate type of monument and sign post found or set.

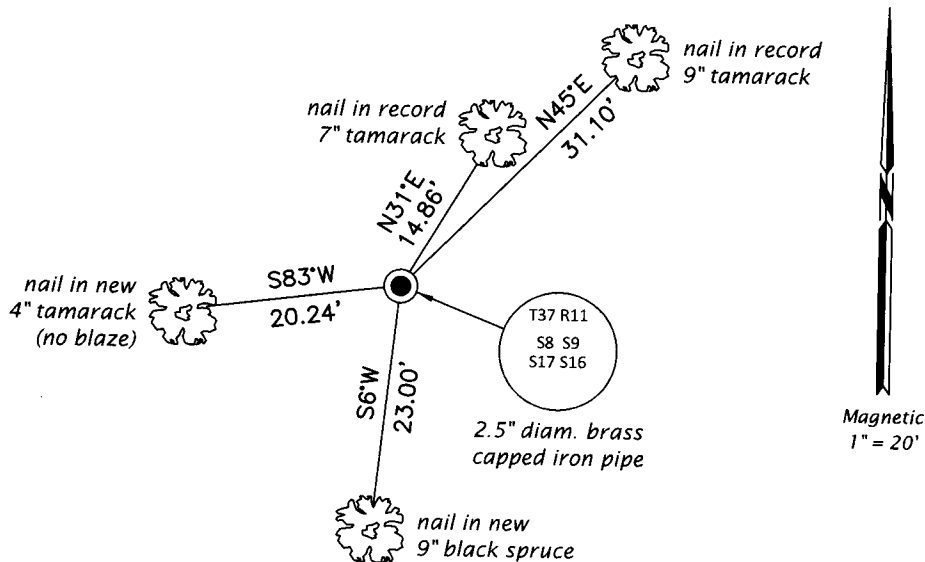
This is a perpetuation of the following monument record(s) that comprise a complete history of the corner:

May 7, 1975: Certified Land Corner Restoration No. 3711080000 by Philip T. Hansen, RLS

May 28, 2019: I found and accepted the record monument, a 2.5" diam. iron pipe with a 3.0" diam. thread-on brass cap projecting 18" above the bog surface. The record bearing tree at S89°W is now gone. Maine's white birch bearing tree is still standing dead after 44 years. I found or established accessories as shown below. I set a white vinyl sign post bearing South 1.1 ft.

The coordinate value shown has been verified by at least one of the following methods: 1) comparison to a previously GPS determined published value; 2) the value is the average of two or more GPS observations at a markedly different time; 3) one or more distances were measured back to the GPS observed corner from temporary GPS observed offset locations.

(c)(d)(e) Plan view of corner with ties to at least 4 witness monuments. If in disagreement with previously established corner, show the distances between the two corners and also indicate the ties to the disputed.

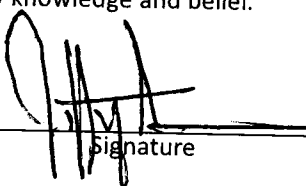


REGISTER OF DEEDS OFFICE
 ONEIDA COUNTY
 FILED

JUN 18 2019

KYLE J. FRANSON
 REGISTER OF DEEDS

(i) I, Jeffrey W. Austin, Professional Land Surveyor No. S-1885, hereby certify that the corner location on this record was determined by me or under my direction and control and that this U.S. Public Land Survey Monument Record is correct and complete to the best of my knowledge and belief.


 Signature

1 JUN 18 2019
 Date