

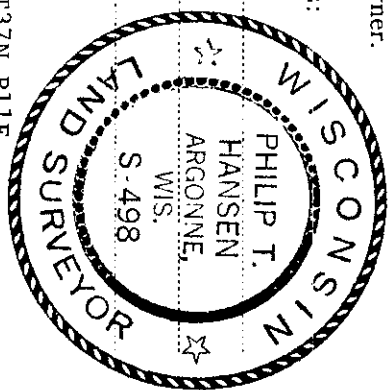
CERTIFIED LAND CORNER RESTORATION

Index No. **G 21**

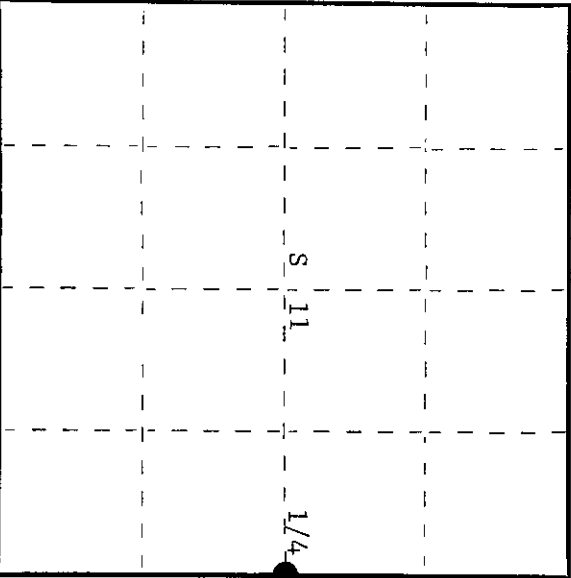
State of Wisconsin

County of Oneida } ss.

I Phillip T. Hansen, do hereby certify that on the 13th day of October, 1975, I found evidence of the Quarter corner of Sections 11 and 12 Township 37 North, Range 11 East, Fourth Principal Meridian, as described hereon; and that from this evidence I established a new monument and accessories as described hereon to perpetuate the original location of this corner.



Resident witnesses:  
Glen Barker  
Jim Claflin



○ = Corner monument restored.

History of original corner establishment:

Original corner established by Wm. E. Dougherty, Government Deputy Surveyor, in 1859 from which tamarack 9" bears N61°E, 14 links and tamarack 8" bears S29°W, 18 links. Corner reset by V.M. Maine, County Surveyor, in 1935. However, when H.C. Lawrence made his retracement survey in 1960, he found Maine's corner in error. He recovered the original stake lying down and recovered the post hole. Set new cedar post and made NBT's:  
Maple 5" N5°E 8-1/2 links,  
Aspen 8" S50°W 34 links.

Description of corner evidence found:

Recovered Lawrence's 5" cedar post, squared and scribed 1/4-S S11, 1/4-S S12 in poor condition. Also recovered V.M. Maine's 5" cedar post which bears N38°E, 26 links from Lawrence's corner.  
Recovered OBT's: Aspen 8" S50°W 34 links - now a decayed stump,  
R. maple 5" (6") N5°E 8.5 links - scribing partly grown over.

Description of monument and accessories I established to perpetuate the original location of this corner.

Replaced Lawrence's 5" cedar post with 2-1/2" iron pipe w/brass cap stamped - S498  
Removed Maine's 5" cedar post. T37N R11E  
NBT: B. spruce 6" N68°W 59.8 links - scribed 1/4 BT.  
Corner post projects 18" above ground.  
Post and BT's painted blue. 1/4 S 11 | S 12  
CPT-1975

Dated at Rhineland, Wis., this 20th day of October, 1975.

Signature *Phillip T. Hansen* Title Registered Land Surveyor Registration No. S-498  
(County Surveyor, Registered Land Surveyor, or other duly authorized official)

Office of Register of Deeds, County of Oneida  
at 10:08 o'clock A.M. on the 28th day of October, 1975  
I hereby certify that the within

Signature *Doris Burger Kuehn*  
(Register of Deeds)

By Deputy

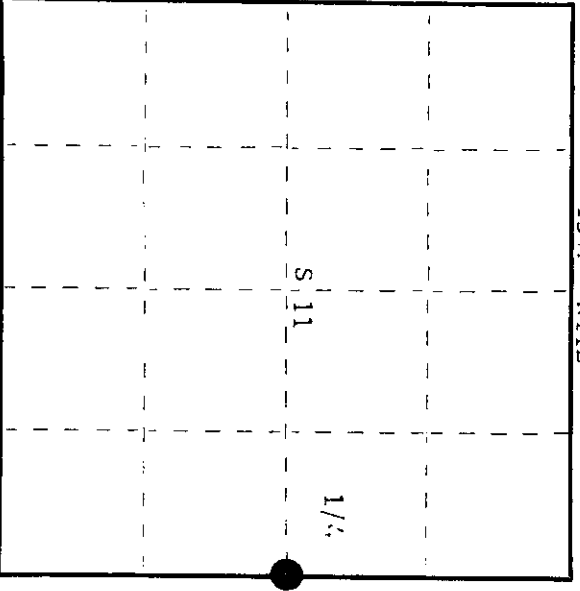
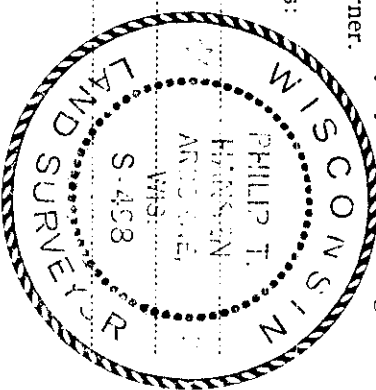
CERTIFIED LAND CORNER RESTORATION

Index No. G-21

State of Wisconsin } ss.  
 County of Oneida

I, Phillip T. Hansen, do hereby certify that on the 13th day of October, 1975, I found evidence of the quarter corner of Sections 11 and 12 Township 37 North, Range 11 East, Fourth Principal Meridian, as described hereon; and that from this evidence I established a new monument and accessories as described hereon to perpetuate the original location of this corner.

Resident witnesses:  
Glen Parker  
Jim Claflin



○ = Corner monument restored.

History of original corner establishment:

Original corner established by Wm. E. Dougherty, Deputy Surveyor, in 1859 from which Tamarack 9" bears N61°E 14 links; Tamarack 8" bears S20°W 18 links.  
 H.C. Lawrence, Registered Land Surveyor, ran the line in 1964. Recovered a very old stake lying down with point in old post hole. Set new post and marked NBT's - Maple 5" N5°E 8-1/2 links and Aspen 8" S50°W 34 links. Recovered Vaine's 1/4 post which he considered doubtful.

Description of corner evidence found:

Recovered 5" cedar post, squared and scribed 1/4S S11, 1/4S S12 in poor condition.  
 Also recovered Vaine's 5" cedar post bearing N38°E 26 links. Removed Vaine's wood post.  
 Recovered OBT's -  
 Aspen 8" S50°W 34 links, now a decayed stump.  
 Red Maple 5" (6") N5°E 8.5 links, scribing partly visible.

Description of monument and accessories I established to perpetuate the original location of this corner.  
 Replaced Lawrence's wood rest with 2-1/2" Bernitsen A-1 Federal Monument, stamped:  
 Marked NBT - Black Spruce 6" N68°W 50.8 links, scribed 1/4 BT.  
 Monument projects 18".

T37N R11E  
 1/4 S11 S12  
 S498 - 1975

Dated at Rhineclander, Wis., this 5th day of November, 1979

Signature: Phillip T. Hansen Title: Registered Land Surveyor Registration No. S-498  
 County Surveyor, Registered Land Surveyor, or other duly authorized official)

Office of Register of Deeds, County of Oneida  
 at 115 o'clock P. M. 3rd day of December, 1979  
 I hereby certify that the within

By: Terma Leverage Tuchen  
 (Register of Deeds)

By: \_\_\_\_\_ Deputy

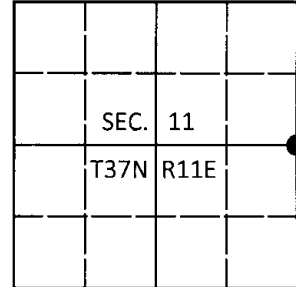
3711112000

**U.S. PUBLIC LAND SURVEY MONUMENT RECORD**

Note: This form is intended and designed to fulfill all requirements of Wisconsin Administrative Code, Chapter A-E 7.08 U.S. Public Land Survey Monument Record (3)(a-l).

(a) CORNER LOCATION  
 1/4 Cor. of Secs. 11 & 12  
 Township 37 North  
 Range 11 East of the 4th P.M.  
 Town of Piehl  
 County of Oneida

WISCORS - Oneida County  
 N: 188,387.12 USft  
 E: 351,659.35 USft  
 Datum: NAD 83(2011)  
 GNSS Method: Real-Time Network  
 GNSS Control: WISCORS VRS



(b) HISTORY OF ORIGINAL CORNER ESTABLISHMENT

Original Surveyor: \_\_\_\_\_ Original Accessories: \_\_\_\_\_  
 Date of Survey \_\_\_\_\_ Commenced: \_\_\_\_\_  
 Completed: \_\_\_\_\_

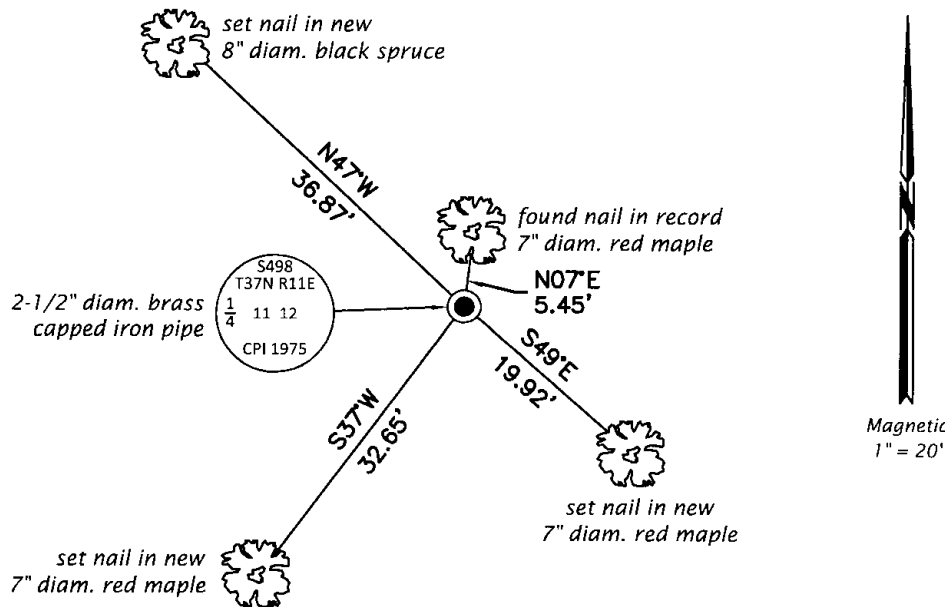
(b)(f)(g)(h) Description of monument found at this corner and if it was accepted, state all evidence (material, testimonial, occupational, plats, records, other monuments) used as a basis for accepting. If not accepted or if nothing was found, state evidence used as basis for establishing location. If re-established through lost corner proportionate methods, indicate all monuments, distances and directions used to establish. Indicate type of monument and sign post found or set.

*This is a perpetuation of a previous USPLS Monument Record by Philip T. Hansen, RLS dated October 20, 1975 and filed in the office of the Oneida County Register of Deeds. A complete history of the corner can be found on the previous monument record. I accept the previous location as a true and faithful perpetuation or reestablishment of the original corner location and further perpetuate it as follows.*

*August 28, 2016: I found and accepted the record monument, a 2-1/2" diam. iron pipe with a 2-1/2" diam. brass cap projecting 18" above the ground surface. I found or established accessories as shown below and set a white vinyl sign post bearing Northwest, 0.7 ft. dist.*

*The coordinate value shown has been verified by at least one of the following methods: 1) comparison to a previously GPS determined published value; 2) the value is the average of two or more GPS observations at a markedly different time; 3) one or more distances were measured back to the GPS observed corner from temporary GPS observed offset locations.*

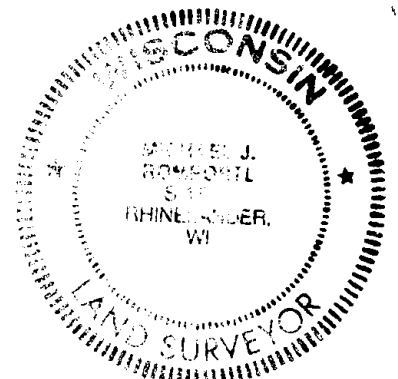
(c)(d)(e) Plan view of corner with ties to at least 4 witness monuments. If in disagreement with previously established corner, show the distances between the two corners and also indicate the ties to the disputed.



REGISTER OF DEEDS OFFICE  
 ONEIDA COUNTY  
 FILED

DEC 28 2016

AT \_\_\_\_\_ O'CLOCK \_\_\_\_\_ M  
 KYLE J. FRANSON  
 REGISTER OF DEEDS



(i) I, Michael J. Romportl, Professional Land Surveyor No. S-1624, hereby certify that the corner location on this record was determined by me or under my direction and control and that this U.S. Public Land Survey Monument Record is correct and complete to the best of my knowledge and belief.

Michael J Romportl 12/23/2016  
 Signature Date