

CERTIFIED LAND CORNER RESTORATION

Index No. N-5

State of Wisconsin }
County of Oneida } ss.

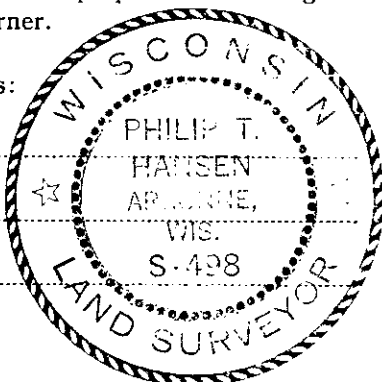
I, Philip T. Hansen, do hereby certify that on the 15th day of June, 1977, I found evidence of the Section Corner corner of Sec. 17, 18, 19 & 20 Township T37N, North, Range R11E, Fourth Principal Meridian, as described hereon; and that from this evidence I established a new monument and accessories as described hereon to perpetuate the original location of this corner.

Resident witnesses:

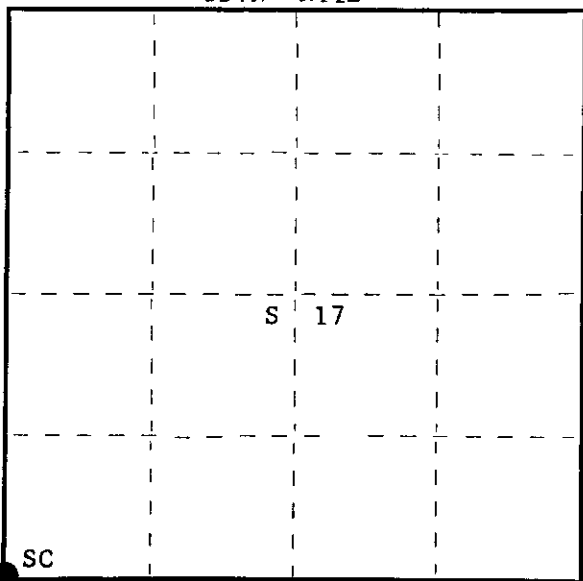
Glen Barker

Jim Claflin

Herb Wagoner



T37N R11E



○ = Corner monument restored.

History of original corner establishment:

Original Corner established by Wm. E. Dougherty, Deputy Surveyor, in 1859, from which Tam. 8" bears N41°W, 21 links; Tamarack 6" bears S63°E, 27 links. Corner restored by D.H. Vaughan, County Surveyor, in 1909. He states the government notes call for two tamaracks for BTs, but none ever grew here, it is high ground. Corner recovered by V.M. Maine, County Surveyor, in 1936. Set 2 1/2" iron pipe. Marked new BT - White Pine stump 30" N28°E, 67 links. Corner restored by H.C. Lawrence, Registered Land Surveyor, in 1948. Recovered 2 1/2" iron pipe with brass cap. No evidence remains of old original BTs.

Description of corner evidence found:

Recovered 2 1/2" iron pipe with screw-on brass cap, stamped: Searched for, but could not find any visible evidence of old BTs. Monument recovered in very good condition. Monument projects 24" above ground.

S18 | S17
S19 | S20

Description of monument and accessories I established to perpetuate the original location of this corner.

As monument was recovered in good condition and firmly in ground, it was left in place. Marked NBTs - White Birch 7" N76°W, 27.9 links, scribed SC BT. White Spruce 10" N7°W, 42.6 links, scribed SC BT. Maple 6" S86°E, 31.6 links, scribed SC BT.

Dated at Rhineland, Wis., this 21st day of June, 1977.

Signature Philip T. Hansen Title Registered Land Surveyor Registration No. S-498
(County Surveyor, Registered Land Surveyor, or other duly authorized official)

Office of Register of Deeds, County of Oneida, I hereby certify that the within instrument was filed in this office for record on the 23rd day of June, 1977 at 12:40 o'clock P M.

Loris Verage Kuehn
(Register of Deeds)

By.....Deputy

FORM 985

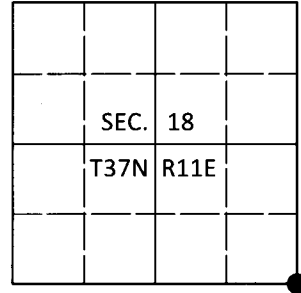
37118000

U.S. PUBLIC LAND SURVEY MONUMENT RECORD

Note: This form is intended and designed to fulfill all requirements of Wisconsin Administrative Code, Chapter A-E 7.08 U.S. Public Land Survey Monument Record (3)(a-i).

(a) CORNER LOCATION
 Cor. of Secs. 17, 18, 19 & 20
 Township 37 North
 Range 11 East of the 4th P.M.
 Town of Piehl
 County of Oneida

WISCRS - Oneida County
 N: 180,693.27 USft
 E: 330,161.01 USft
 Datum: NAD 83(2011)
 GNSS Method: RTN - Direct
 GNSS Control: WISCORS VRS



(b) HISTORY OF ORIGINAL CORNER ESTABLISHMENT

Original Surveyor:

Original Accessories:

Date of Survey Commenced:
 Completed:

See previous monument record(s)

(b)(f)(g)(h) Description of monument found at this corner and if it was accepted, state all evidence (material, testimonial, occupational, plats, records, other monuments) used as a basis for accepting. If not accepted or if nothing was found, state evidence used as basis for establishing location. If re-established through lost corner proportionate methods, indicate all monuments, distances and directions used to establish. Indicate type of monument and sign post found or set.

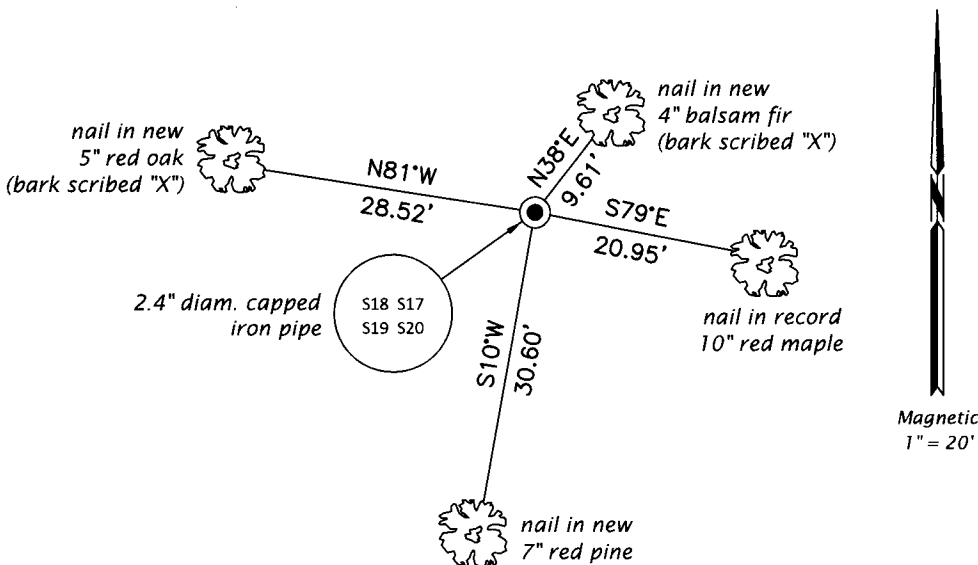
This is a perpetuation of the following monument record(s) that comprise a complete history of the corner:

June 21, 1977: Certified Land Corner Restoration No. 3711180000 by Philip T. Hansen, RLS

Sep. 4, 2019: I found and accepted the record monument, a 2.4" diam. iron pipe with a 3.0" diam. plumbing cap projecting 24" above the ground surface. The record bearing trees at N76°W and N7°W are gone. I found or established accessories as shown below. I set a white vinyl sign post bearing Northeast, 1.1 ft.

The coordinate value shown has been verified by at least one of the following methods: 1) comparison to a previously GPS determined published value; 2) the value is the average of two or more GPS observations at a markedly different time; 3) one or more distances were measured back to the GPS observed corner from temporary GPS observed offset locations.

(c)(d)(e) Plan view of corner with ties to at least 4 witness monuments. If in disagreement with previously established corner, show the distances between the two corners and also indicate the ties to the disputed.



REGISTER OF DEEDS OFFICE
 ONEIDA COUNTY
 FILED

JAN 03 2020

KYLE J. FRANSON
 REGISTER OF DEEDS

(i) I, Jeffrey W. Austin, Professional Land Surveyor No. S-1885, hereby certify that the corner location on this record was determined by me or under my direction and control and that this U.S. Public Land Survey Monument Record is correct and complete to the best of my knowledge and belief.

[Handwritten Signature]
 Signature

DEC 23, 2019
 Date

3711180000 (INDEX NO. N-5)