

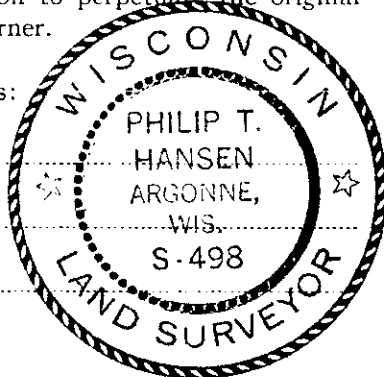
CERTIFIED LAND CORNER RESTORATION

13 Index No. N-3

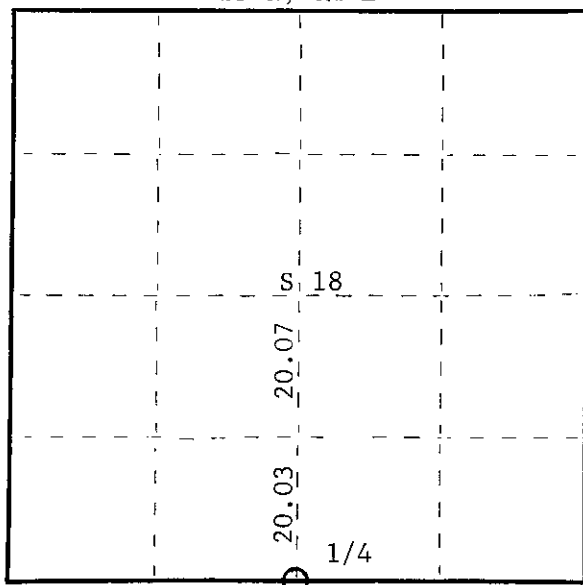
State of Wisconsin }
County of Oneida } ss.

I Philip T. Hansen, do hereby certify that on the 18th day of June, 1975, I found evidence of the Quarter corner of between Sections 18 and 19 Township 37 North, Range 11 East, Fourth Principal Meridian, as described hereon; and that from this evidence I established a new monument and accessories as described hereon to perpetuate the original location of this corner.

Resident witnesses:



T37N, R11E



○ = Corner monument restored.

History of original corner establishment:
Original corner established by Wm. E. Dougherty, Government Deputy Surveyor, in 1859 from which cedar 6" bears S2°E, 8 links and tamarack 12" bears N16°E, 8 links.
Corner re-established by D.H. Vaughan, County Surveyor, from which white pine 14" bears N48°W, 8 links.

Corner recovered by H.C. Lawrence, Registered Land Surveyor, in 1947. From C-1/4 corner he ran random line South at 20.07 chains; recovered Vaughan's SC-1/16 corner. Continued S2°22'W, 20.03 chains and recovered Vaughan's S-1/4 corner. Recovered OBT white pine stump 14", N48°N, 8 links. Set new post from which NBT aspen 6" bears N15°W, 32 links and aspen 8" bears S60°E, 14 links.

Description of corner evidence found:

Recovered Lawrence's 3" oak post, squared and scribed 1/4S S18, 1/4S S19, rotted off and lying beside Maine's 2½" iron pipe with brass cap stamped - Searched for and found point of rotted off stake right adjacent to Maine's iron pipe.

| | | | | |
|--|-------|----------|-------------------|------------|
| Recovered OBT's - White pine stump 14" | N48°W | 8 links | now decayed | T37N, R11E |
| Aspen 6" | N15°W | 32 links | now cut-off stump | S18 |
| Aspen 8" | S60°W | 14 links | now broken off; | 1 + 4 |
| | | | 8' high stub; | S19 |
| | | | scribed 1/4 BT | m. |

The ties to iron pipe agree with recorded notes.

Description of monument and accessories I established to perpetuate the original location of this corner.
Left Maine's 2½" iron pipe in place.

| | | | |
|---------------------|-------|------------|----------------|
| NBT's - Red pine 7" | S70°W | 50.8 links | scribed 1/4 BT |
| Red pine 6" | S10°W | 64.4 links | scribed 1/4 BT |

Dated at Rhinelander, Wis., this 11th day of July, 1975.

Signature *Philip T. Hansen* Title Registered Land Surveyor Registration No. S-498
(County Surveyor, Registered Land Surveyor, or other duly authorized official)

Office of Register of Deeds, County of Oneida, I hereby certify that the within instrument was filed in this office for record on the 1st day of October, 1975 at 3:00 o'clock P.M.

Doris Verage Kuehn
(Register of Deeds)

By Deputy

FORM 985 H. C. MILLER CO., MILWAUKEE

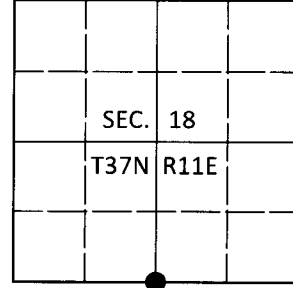
0200811123

U.S. PUBLIC LAND SURVEY MONUMENT RECORD

Note: This form is intended and designed to fulfill all requirements of Wisconsin Administrative Code, Chapter A-E 7.08 U.S. Public Land Survey Monument Record (3)(a-i).

(a) CORNER LOCATION
 1/4 Cor. of Secs. 18 & 19
 Township 37 North
 Range 11 East of the 4th P.M.
 Town of Piehl
 County of Oneida

WISCRS - Oneida County
 N: 180,828.52 USft
 E: 327,433.50 USft
 Datum: NAD 83(2011)
 GNSS Method: Static - Direct
 GNSS Control: WISCORS VRS



(b) HISTORY OF ORIGINAL CORNER ESTABLISHMENT

Original Surveyor:

Original Accessories:

Date of Survey Commenced:
 Completed:

See previous monument record(s)

(b)(f)(g)(h) Description of monument found at this corner and if it was accepted, state all evidence (material, testimonial, occupational, plats, records, other monuments) used as a basis for accepting. If not accepted or if nothing was found, state evidence used as basis for establishing location. If re-established through lost corner proportionate methods, indicate all monuments, distances and directions used to establish. Indicate type of monument and sign post found or set.

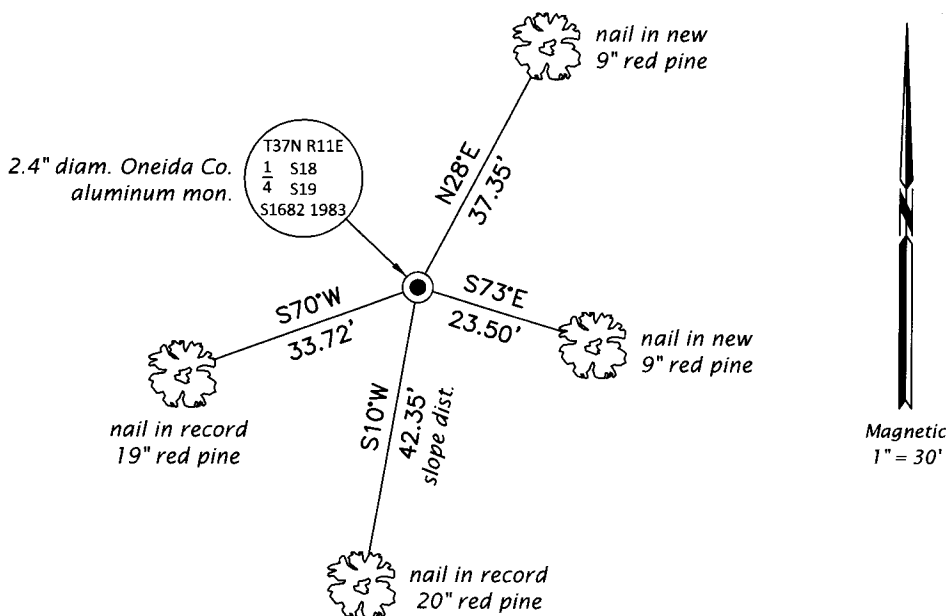
This is a perpetuation of the following monument record(s) that comprise a complete history of the corner:

July 11, 1975: Certified Land Corner Restoration No. 3711180020 by Philip T. Hansen, RLS

Sep. 7, 2019: I found and accepted a perpetuation of the record monument, a 2.4" diam. aluminum pipe with a 3.3" diam. Oneida Co. aluminum cap projecting 12" above the ground surface. I found the record monument bent, lying flat next to the existing monument. I found or established accessories as shown below. I set a white vinyl sign post bearing Northeast, 1.0 ft.

The coordinate value shown has been verified by at least one of the following methods: 1) comparison to a previously GPS determined published value; 2) the value is the average of two or more GPS observations at a markedly different time; 3) one or more distances were measured back to the GPS observed corner from temporary GPS observed offset locations.

(c)(d)(e) Plan view of corner with ties to at least 4 witness monuments. If in disagreement with previously established corner, show the distances between the two corners and also indicate the ties to the disputed.



REGISTER OF DEEDS OFFICE
 ONEIDA COUNTY
 FILED

JAN 03 2020

KYLE J. FRANSON
 REGISTER OF DEEDS

(i) I, Jeffrey W. Austin, Professional Land Surveyor No. S-1885, hereby certify that the corner location on this record was determined by me or under my direction and control and that this U.S. Public Land Survey Monument Record is correct and complete to the best of my knowledge and belief.

[Handwritten Signature]
 Signature

DEC 23, 2019
 Date