

CERTIFIED LAND CORNER RESTORATION

Index No. L-5

State of Wisconsin }
County of Oneida } ss.

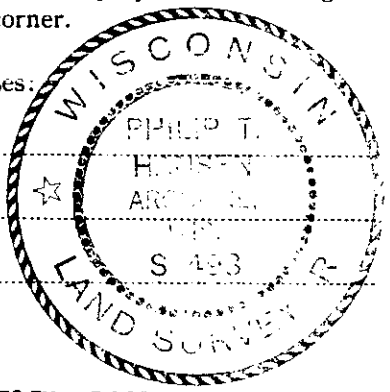
I Philip T. Hansen, do hereby certify that on the 15th day of June, 19 77, I found evidence of the Quarter corner of Sec. 17 and 18 Township 37 North, North, Range 11 East, Fourth Principal Meridian, as described hereon; and that from this evidence I established a new monument and accessories as described hereon to perpetuate the original location of this corner.

Resident witnesses:

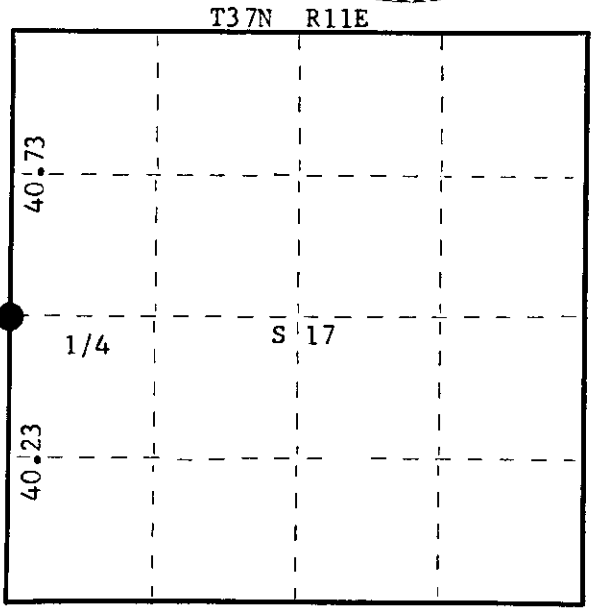
Glen Barker

Jim Claflin

Herb Wagoner



FORM 985



○ = Corner monument restored.

History of original corner establishment:

Original Corner established by Wm. E. Dougherty, Deputy Surveyor, in 1859, from which Sugar 9" bears S80°E, 12 links; Elm 9" bears S48°W, 10 links. Corner restored by H.C. Lawrence, Registered Land Surveyor, in 1948. Recovered original Sugar, which was down, chopped away overgrowth, uncovered original scribe marks. No evidence of the original Elm BT. Set new post and marked new BTs - Sugar 20" S48°W, 52 links; Sugar 12" N67°E, 64 links.

Description of corner evidence found:

Recovered 6" cedar post, squared and scribed 1/4S, S17, 1/4S, S18, in poor condition. Recovered OBTs- Sugar 9" (original) S80°E, 15 links. Recovered parts of decayed stump. Sugar 20" (24") S48°W (S52°W), 52 links (50.3 links), scribed 1/4S S18 BT. Sugar 12" (18") N67°E (N71°E), 65 links, scribing grown over.

Description of monument and accessories I established to perpetuate the original location of this corner.

Replaced 6" cedar post with 2 1/2" Berntsen A-1 Federal Monument, aluminum with magnet in cap and base. Cap stamped:

Monument projects 18" above ground.
New BT - Sugar 8" S8°W, 44 links, scribed 1/4 BT.

T37N R11E
1/4 S18 | S17
S498-1977

Dated at Rhineland, Wis., this 21st day of June, 19 77.

Signature Philip T. Hansen Title Registered Land Surveyor Registration No. S-498
(County Surveyor, Registered Land Surveyor, or other duly authorized official)

Office of Register of Deeds, County of Oneida, I hereby certify that the within instrument was filed in this office for record on the 23rd day of June, 19 77 at 12:40 o'clock P M.

Doris Verage Kueln
(Register of Deeds)

By.....Deputy

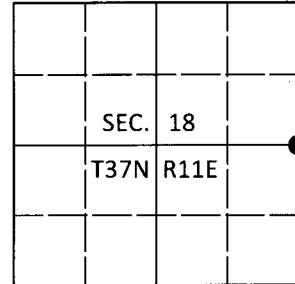
000028111E

U.S. PUBLIC LAND SURVEY MONUMENT RECORD

Note: This form is intended and designed to fulfill all requirements of Wisconsin Administrative Code, Chapter A-E 7.08 U.S. Public Land Survey Monument Record (3)(a-i).

(a) CORNER LOCATION
 1/4 Cor. of Secs. 17 & 18
 Township 37 North
 Range 11 East of the 4th P.M.
 Town of Piehl
 County of Oneida

WISCRS - Oneida County
 N: 183,359.75 USft
 E: 330,154.83 USft
 Datum: NAD 83(2011)
 GNSS Method: Static - Direct
 GNSS Control: WISCORS VRS



(b) HISTORY OF ORIGINAL CORNER ESTABLISHMENT

Original Surveyor:

Original Accessories:

Date of Survey

Commenced:
 Completed:

See previous monument record(s)

(b)(f)(g)(h) Description of monument found at this corner and if it was accepted, state all evidence (material, testimonial, occupational, plats, records, other monuments) used as a basis for accepting. If not accepted or if nothing was found, state evidence used as basis for establishing location. If re-established through lost corner proportionate methods, indicate all monuments, distances and directions used to establish. Indicate type of monument and sign post found or set.

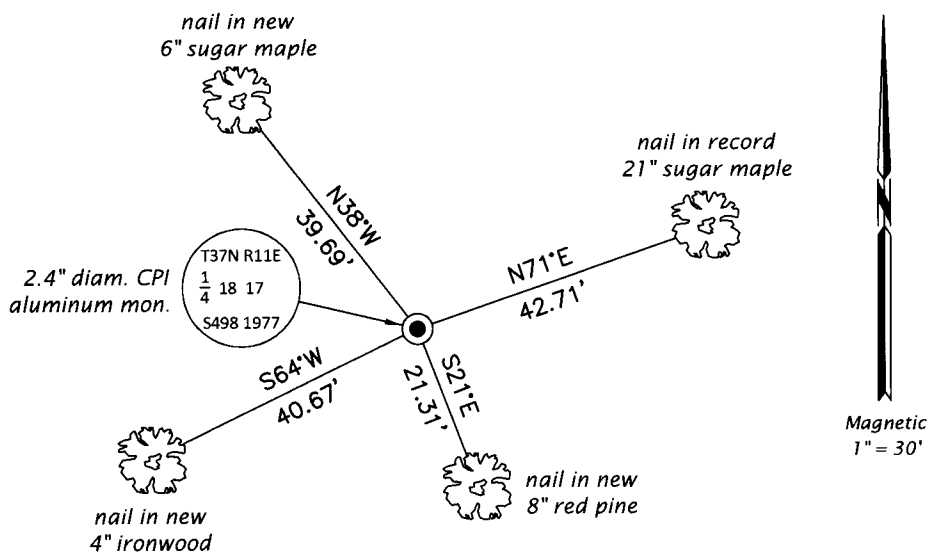
This is a perpetuation of the following monument record(s) that comprise a complete history of the corner:

June 21, 1977: Certified Land Corner Restoration No. 3711182000 by Philip T. Hansen, RLS

Sep. 7, 2019: I found and accepted the record monument, a 2.4" diam. aluminum pipe with a 3.3" diam. CPI aluminum cap projecting 18" above the ground surface. The record bearing trees at S8°W and S48°W are now stumps. I found or established accessories as shown below. I set a white vinyl sign post bearing Southwest, 1.0 ft.

The coordinate value shown has been verified by at least one of the following methods: 1) comparison to a previously GPS determined published value; 2) the value is the average of two or more GPS observations at a markedly different time; 3) one or more distances were measured back to the GPS observed corner from temporary GPS observed offset locations.

(c)(d)(e) Plan view of corner with ties to at least 4 witness monuments. If in disagreement with previously established corner, show the distances between the two corners and also indicate the ties to the disputed.

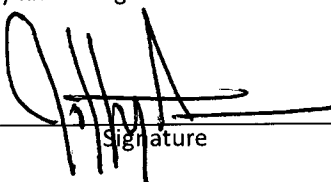


REGISTER OF DEEDS OFFICE
 ONEIDA COUNTY
 FILED

JAN 03 2020

KYLE J. FRANSON
 REGISTER OF DEEDS

(i) I, Jeffrey W. Austin, Professional Land Surveyor No. S-1885, hereby certify that the corner location on this record was determined by me or under my direction and control and that this U.S. Public Land Survey Monument Record is correct and complete to the best of my knowledge and belief.


 Signature

DEC 23, 2019
 Date

3711182000 (INDEX NO. L-5)