

CERTIFIED LAND CORNER RESTORATION

Index No. R-3

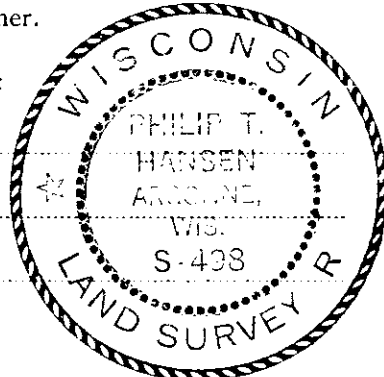
State of Wisconsin }
County of Cneida } ss.

I, Philip T. Hansen, do hereby certify that on the 8th day of August, 1977, I found evidence of the Quarter corner of Section 19 & 30 Township 37, North, Range 11 East, Fourth Principal Meridian, as described hereon; and that from this evidence I established a new monument and accessories as described hereon to perpetuate the original location of this corner.

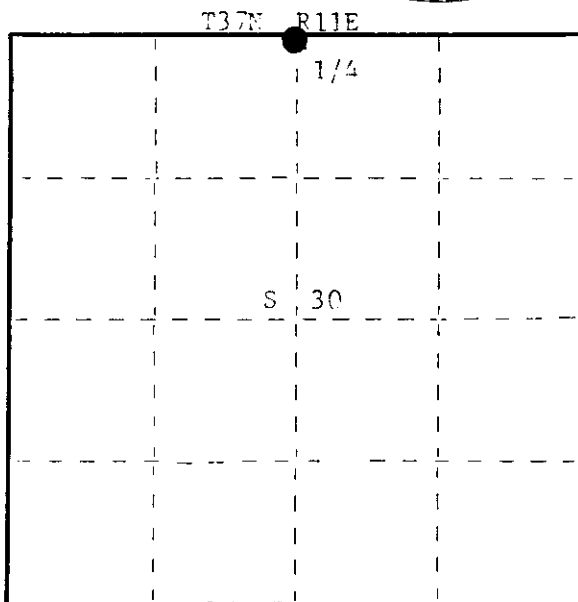
Resident witnesses:

Jim Clafflin

Herb Wagoner



FORM 985 H. C. MILLER CO. MILWAUKEE



○ = Corner monument restored.

History of original corner establishment: Original Corner established by Wm. E. Dougherty, Deputy Surveyor, in 1859, from which Spruce 8" bears N37°E, 12 links and Spruce 8" bears S36°E, 14 lks. H.C. Lawrence, Registered Land Surveyor, established the length of his line between 19 and 30 by an average basis, one-half the distance between line at 18 & 19 and 30 & 31 for an average distance of 89.49 chains.

Set the 1/4 at a proportionate distance to original calls. Set 1/4 corner at 42.68 chains west of Section Corner 19, 20, 29, 30 and 1.28 chains offset north.

Marked BTs - White Birch 7" N8°W, 27 links
vent on roof house S34°E, 62.5 links.

Description of corner evidence found:

Recovered 5" square cedar post, scribed 1/4 S10, 1/4 S30.

Post had a rock cairn around base and an old wash tub around that.

Recovered CRTs - White Birch 7" N8°W, 27 links, now a rotten stump.

Vent on roof house S24°E, 62.5 links - remains only hole in ground.

Description of monument and accessories I established to perpetuate the original location of this corner.

Replaced 5" cedar post with 2 1/2" Berntsen A-1 Federal monument, aluminum with magnet in cap and base, projecting 2 1/2" above ground. Cap stamped:

Marked NBTs - Maple 6" S54°E, 15.0 links, scribed 1/4 BT.

Maple 7" N24°W, 25.8 links, scribed 1/4 BT.

Sugar 8" S57°W, 34.2 links, scribed 1/4 BT.

T37N R11E

1/4 S 10
S 30

S498 - 1977

Dated at Rhineland, Wis., this 11th day of August, 1977.

Signature Philip T. Hansen Title Registered Land Surveyor Registration No. S-438
(County Surveyor, Registered Land Surveyor, or other duly authorized official)

Office of Register of Deeds, County of Cneida, I hereby certify that the within instrument was filed in this office for record on the 32nd day of August, 1977 at 11:5 o'clock P. M.

Joni Verage Kuehn
(Register of Deeds)

By.....Deputy

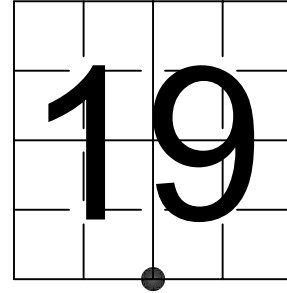
3711190030

U. S. PUBLIC LAND SURVEY MONUMENT RECORD

NOTE: This form is intended and designed to fulfill all requirements of Wisconsin Administrative Code, Chapter A-E 7.08 U.S. Public Land Survey Monument Record (3) (a-i)

A-E 7.08(3)(a) Identity of corner:
SOUTH 1/4 CORNER SECTION 19,
TOWNSHIP 37 NORTH,
RANGE 11 EAST OF THE 4TH PM,
TOWN OF PIEHL,
COUNTY OF ONEIDA

WISCRS - ONEIDA COUNTY
N: 175,639.514 USft (XXX,XXX.XXX)
E: 327,088.465 USft (XXX,XXX.XXX)
Datum: NAD83 (2011)
GNSS Method RTK
GNSS Control WISCORS VRS



The coordinate value shown has been verified by the average of two or more GPS observations at a markedly different time. Coordinates shown in parenthesis are previously published values.

A-E 7.08(3)(b)

Original Surveyor: William E. Daugherty - August 10, 1859 - August 14, 1859

Original Accessories:

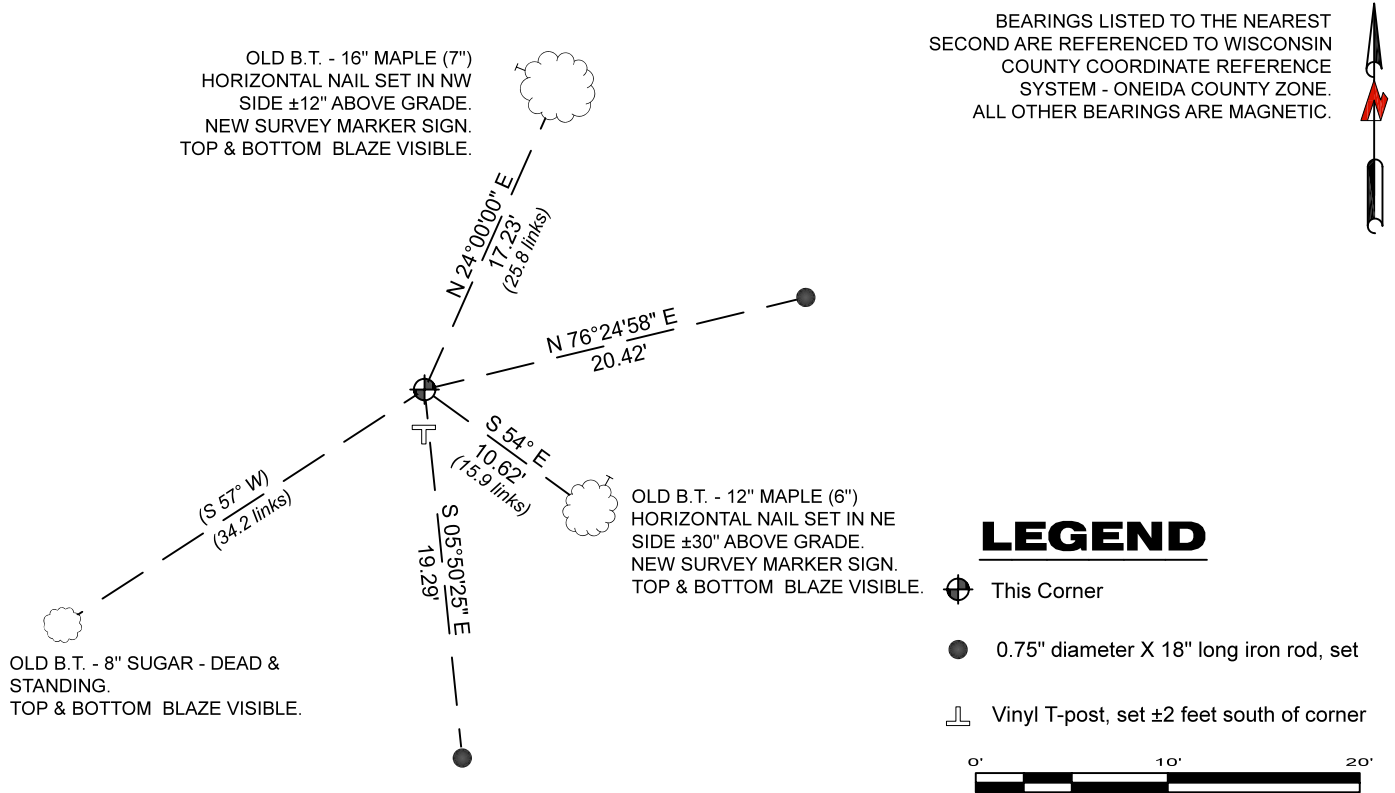
Spruce	8	N 37° E	12 Links
Spruce	8	S 36° E	14 Links

See previous Certified Land Corner Restoration - R-3 - August 11, 1977 - Surveyor 498 - Philip T. Hansen - THENCE:

April 19, 1996 - Surveyor 1682 - Glen Barker - indicates this position as "2 1/4" alum pipe W/3 1/4" alloy cap found" on Oneida County Map #B3334.

November 9, 2023 - I found a 2.4" diameter aluminum pipe with a 3.25" diameter aluminum CPI cap stamped to identify the corner location. The monument extends ±24" above grade and has an old galvanized metal washtub placed over the top. I also found 2 of Hansen's bearing trees alive and in good condition, and one dead but standing. I established 2 new witnesses as shown below.

A-E 7.08(3)(c)(d) Plan view of corner with references to at least 4 witness monuments.

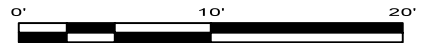


BEARINGS LISTED TO THE NEAREST SECOND ARE REFERENCED TO WISCONSIN COUNTY COORDINATE REFERENCE SYSTEM - ONEIDA COUNTY ZONE. ALL OTHER BEARINGS ARE MAGNETIC.



LEGEND

- This Corner
- 0.75" diameter X 18" long iron rod, set
- Vinyl T-post, set ±2 feet south of corner




A-E 7.08(3)(e) 1977 Surveyor set a Berntsen A-1 Federal monument with a stamped aluminum cap. Subsequent surveyors found the same, as did I in 2023.

A-E 7.08(3)(f) I accept this monument as a FOUND PERPETUATED LOCATION of the corner.
A-E 7.08(3)(g)(h) This corner was not determined through lost-corner-proportionate methods.

A-E 7.08(3)(i) I, Jeffrey L. DeMuth, Professional Land Surveyor No. S-2656, hereby certify that the corner location on this record was determined by me or under my direction and control, and that this U.S. Public Land Survey Monument Record is correct and complete to the best of my knowledge, and belief.




SIGNATURE

November 21, 2023
DATE