

CERTIFIED LAND CORNER RESTORATION

Index No. R-1-2

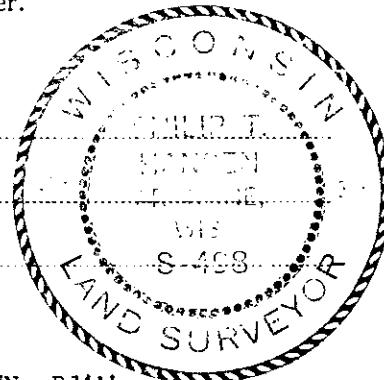
State of Wisconsin }
County of Oneida } ss.

I, Philip T. Hansen, do hereby certify that on the 3rd day of August, 1977, I found evidence of the Meander Corner corner of E-W Section line 19 & 30 Township 37, North, Range 11 East, Fourth Principal Meridian, as described hereon; and that from this evidence I established a new monument and accessories as described hereon to perpetuate the original location of this corner.

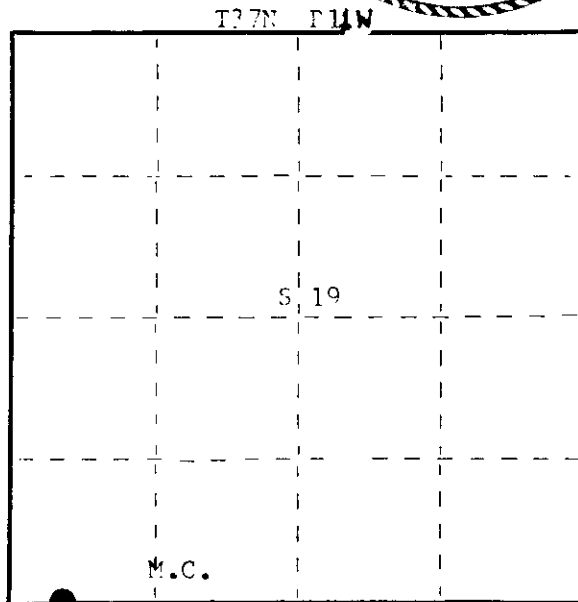
Resident witnesses:

Jim Claflin

Herb Wagoner



FORM 985 M. C. MILLER CO., MILWAUKEE



○ = Corner monument restored.

History of original corner establishment: Original corner established by Wm. E. Dougherty, Deputy Surveyor, in 1850 from which Y. Pine 12" bears N37°E, 24 links and Spruce 10" bears S5°E 17 lks M.C. was established by J.J. Melendy, Surveyor, in 1916, mistakenly took the pine BT for M.C. on range line.

V.M. Maine also ran this line, but at 41.75 he angled south 5° for some unknown reason which made his corners out of position.

No one had ever recovered the 1/4 corner or meander corner on east side of lake.

Corner set by H.C. Lawrence, Registered Land Surveyor. Ran random line west from section corner to close out 2.35 chains south of original M.C. Set M.C. on east shore at 71.46 chains. Marked norway pine 10" S25°E, 27 links. Set tamarack stake for M.C.

Description of corner evidence found:

Unable to locate Lawrence's tamarack BT.

Recovered Lawrence's norway pine 10" S25°E, 27 links.

Description of monument and accessories I established to perpetuate the original location of this corner.

Drove an iron pipe in ground on southeast shore of Ginty Lake N25°W, 27.0 links from Lawrence's red pine BT.

Set a 1 1/2" iron pipe with 2" brass cap for witness corner south 40.0 links.

Monument projects 32" above ground. Cap stamped:

Norway Pine (Lawrence's) 12" S25°E, 27.0 links, scribed M.C. S30 BT.

NPT - White Birch 6" S71°E, 26.1 links, scribed M.C. BT.

N 40 lks to
M.C.
M.C. S 19
S 30 M.C.
S498
CFI-1977

Dated at Rhineland, Wis., this 10th day of August, 1977

Signature Philip T. Hansen Title Registered Land Surveyor Registration No. S-498
(County Surveyor, Registered Land Surveyor, or other duly authorized official)

Office of Register of Deeds, County of Oneida, I hereby certify that the within instrument was filed in this office for record on the 22nd day of August, 1977 at 11:52 o'clock P. M.

Joris Terage Kuehn
(Register of Deeds)

By _____ Deputy

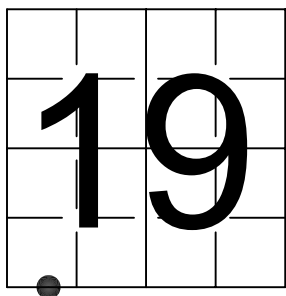
371190032

U. S. PUBLIC LAND SURVEY MONUMENT RECORD

NOTE: This form is intended and designed to fulfill all requirements of Wisconsin Administrative Code, Chapter A-E 7.08 U.S. Public Land Survey Monument Record (3) (a-i)

A-E 7.08(3)(a) Identity of corner:
MEANDER CORNER SOUTH LINE OF
SECTION 19, TOWNSHIP 37 NORTH,
RANGE 11 EAST OF THE 4TH PM,
TOWN OF PIEHL,
COUNTY OF ONEIDA

WISCRS - ONEIDA COUNTY
N: 175,814.237 USft (XXX,XXX.XXX)
E: 325,186.744 USft (XXX,XXX.XXX)
Datum: NAD83 (2011)
GNSS Method RTK
GNSS Control WISCORS VRS



The coordinate value shown has been verified by the average of two or more GPS observations at a markedly different time. Coordinates shown in parenthesis are previously published values.

A-E 7.08(3)(b)

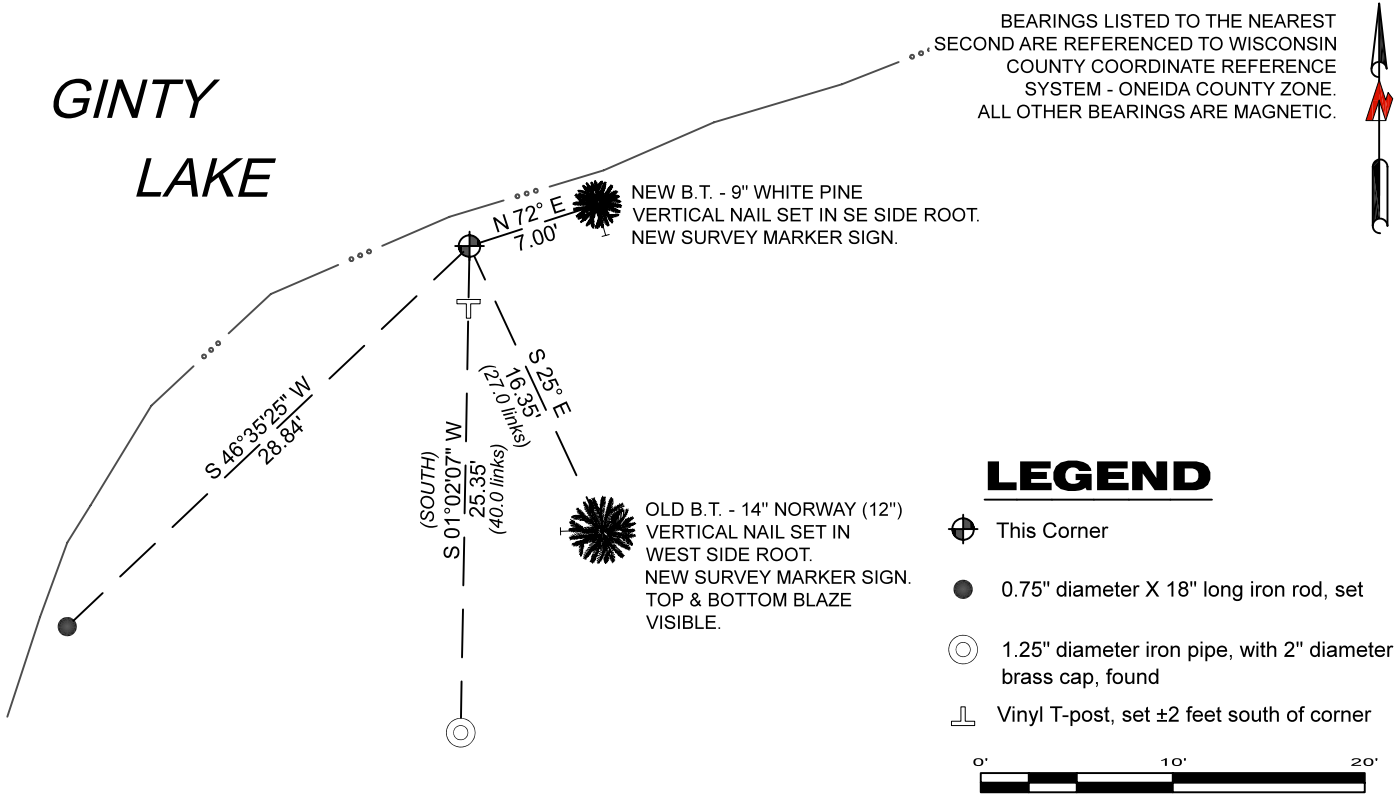
Original Surveyor: William E. Daugherty - August 10, 1859 - August 14, 1859

Original Accessories:			
Yellow Pine	12	N 37° E	24 Links
Spruce	10	S 5° E	17 Links

See previous Certified Land Corner Restoration - R- 1-2 - August 10, 1977 - Surveyor 498 - Philip T. Hansen - THENCE:

November 9, 2023 - I found a 1.25" diameter iron pipe (no cap) ± 1.5 feet from the shore of Ginty Lake. I also found 1 of Hansen's bearing trees alive and in good condition, and a 1.25" diameter iron pipe with a 2" diameter brass capped witness (NOTE: Hansen calls this a 1.5" iron pipe). I established 2 new witnesses as shown below.

A-E 7.08(3)(c)(d) Plan view of corner with references to at least 4 witness monuments.



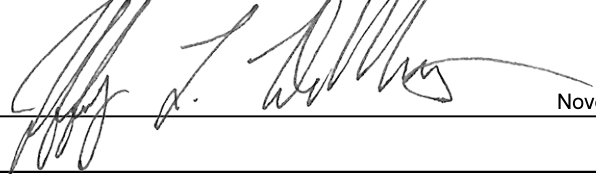
A-E 7.08(3)(e) 1977 Surveyor set an iron pipe monument for the corner, and a brass capped witness monument. I found both in 2023.

A-E 7.08(3)(f) I accept this monument as a FOUND PERPETUATED LOCATION of the corner.

A-E 7.08(3)(g)(h) This corner was not determined through lost-corner-proportionate methods.

A-E 7.08(3)(i) I, Jeffrey L. DeMuth, Professional Land Surveyor No. S-2656, hereby certify that the corner location on this record was determined by me or under my direction and control, and that this U.S. Public Land Survey Monument Record is correct and complete to the best of my knowledge, and belief.



SIGNATURE  DATE November 21, 2023