

065
192783

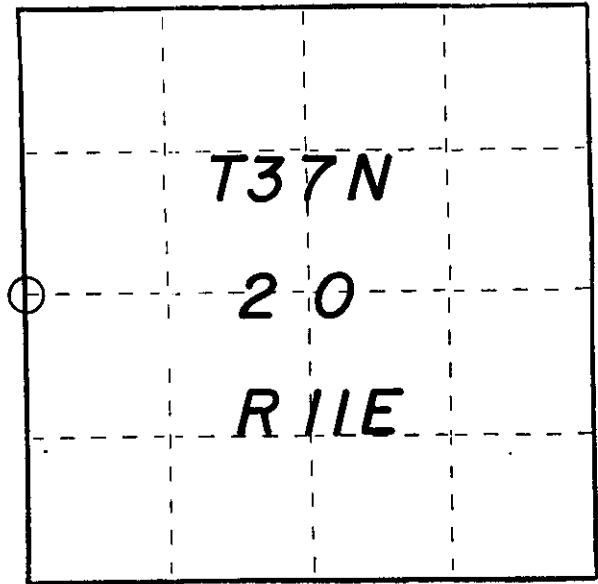
U. S. PUBLIC LAND SURVEY MONUMENT RECORD

INSTRUCTIONS: This record shall show the location of the corner and shall include all of the following nine elements (a through i).

- (a) Identify the corner by reference to the U.S. public land survey system.
- = Corner monument restored.

Compared with all record data and accepted as correct.

Robert H. Hines 18 JUL 84
Oneida County Surveyor date



- (b) Describe any record evidence, monument evidence, occupational evidence, testimonial evidence or any other material evidence you considered, and whether the monument was found or placed.

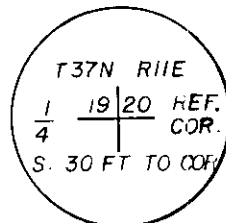
Established line between section corner 17-18-19-20 and section corner 19-20-29-30 for a distance of 5339.28'. At a proportional distance of 2669.64' and on line set 1/4 corner. Corner falls in the center line of Ginty Lake Road. From the control of established 1/4 corner, the C1/4 of Section 20 falls in the intersection of Ginty Lake Road west and Gagen Road north and south. Also, East and West quarter line is in alignment with old fence running east.

In 1937, V.A. Maine, County Surveyor, had set 1/4 corner 2667.85' of either section corner.

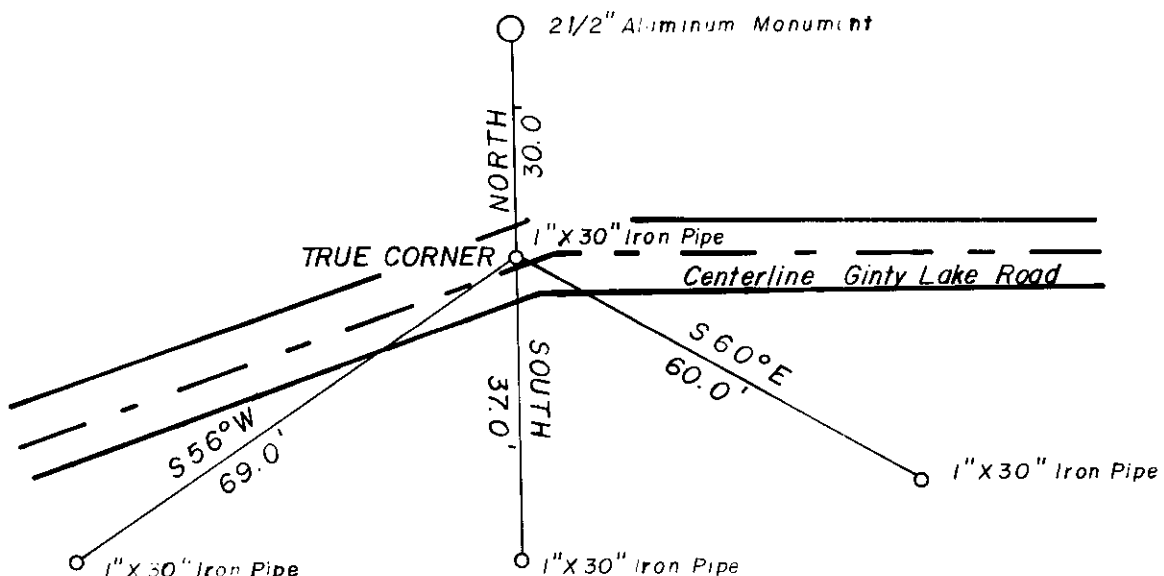
On the above evidence of occupational evidence and prior survey that is within several feet of our distance, set 1/4 corner on proportional measurement.

- (c) In the plan view drawing below, provide reference ties to at least 4 witness monuments, or, if the location is within a municipality, to at least 2 witness monuments. (Witness monuments shall be made of concrete, natural stone, iron or other equally durable material.) Describe witness monuments.

Alloy Cap Stamped:



- (d) Show a plan view drawing depicting the relevant monuments and reference ties which is sufficient in detail to enable accurate relocation of the corner monument if the corner monument is disturbed. Indicate north.



P-5

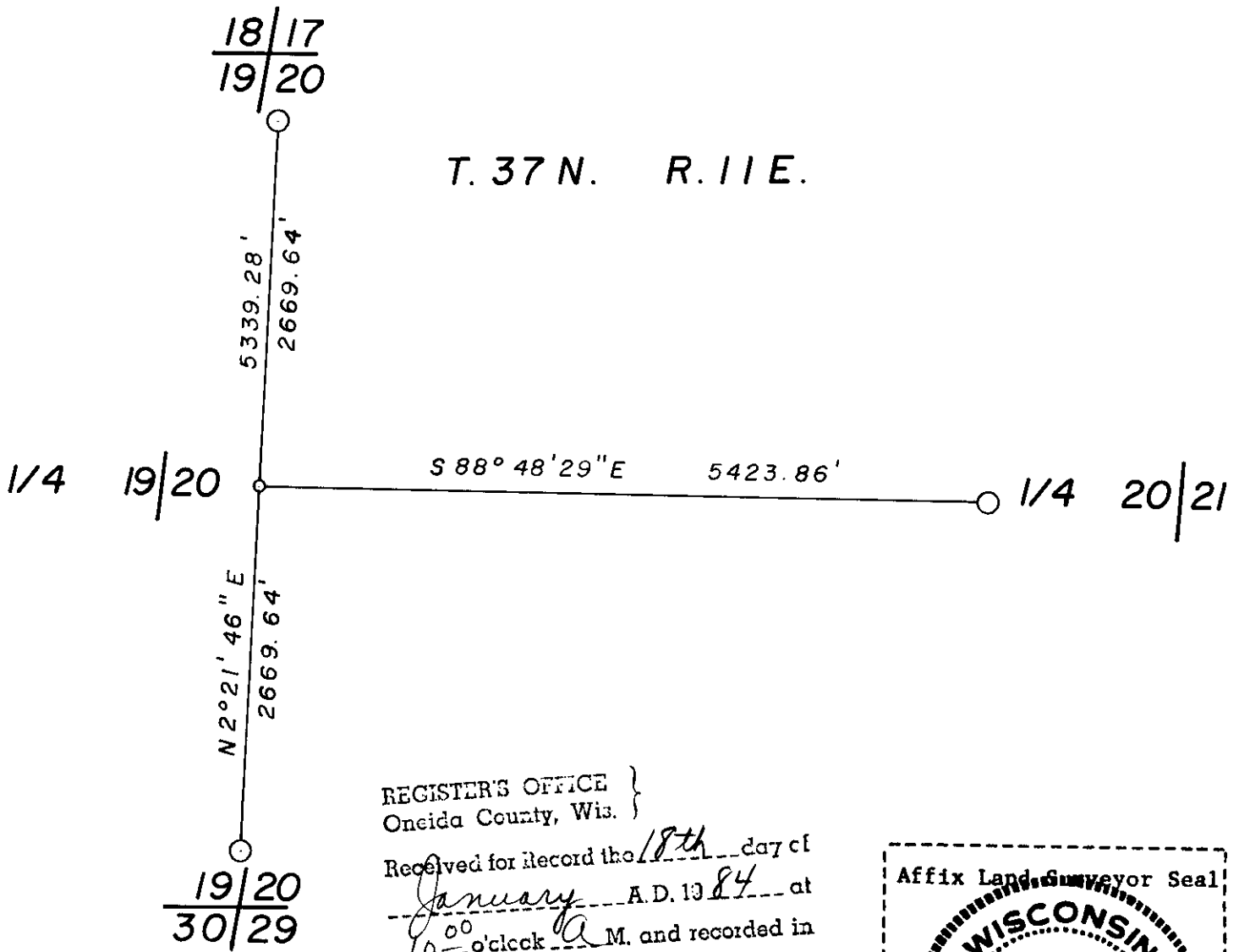
(e) Describe any material discrepancy between the location of the corner as restored or reestablished and the location of that corner as previously restored or reestablished by distance and direction. Show the discrepancy on the plan view drawing under (d), above. Show the distances between the corner as previously restored or reestablished and (1) the corner as restored or reestablished, and (2) to at least 2 of the witness monuments shown on the drawing in (d), above.

See drawing below.

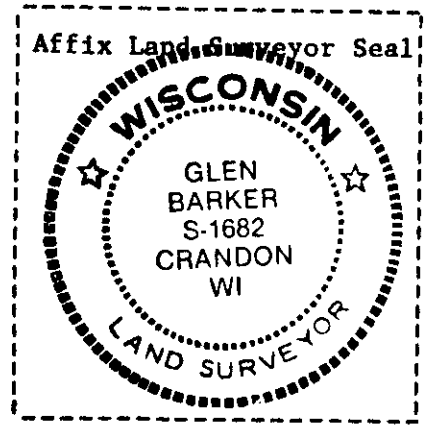
(f) Was the corner restored through acceptance of (1) an obliterated evidence location, or, (2) a found perpetuated location?

(g&h) Was the corner reestablished through lost corner proportionate methods? If so, show the method, including the directions and distances to other public land survey corners used as evidence or used for proportioning in determining the corner location?

proportionate method



REGISTER'S OFFICE }
 Oneida County, Wis. }
 Received for record the 18th day of
January A.D. 1984 at
10 o'clock A M. and recorded in
 Vol. _____ on page _____
Doris Versage Kuehn
 Register



(i) I, Glen Barker
 (type or print name) certify that the corner location shown
 on this record was determined by me or under my direction and
 control and that this U.S. Public Land Survey Monument Record is
 correct and complete to the best of my knowledge and belief.

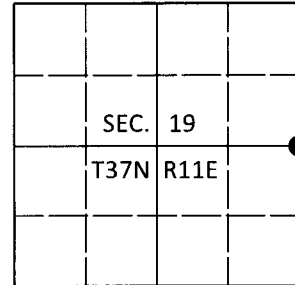
Glen Barker Signature 10/19/83 Date

U.S. PUBLIC LAND SURVEY MONUMENT RECORD

Note: This form is intended and designed to fulfill all requirements of Wisconsin Administrative Code, Chapter A-E 7.08 U.S. Public Land Survey Monument Record (3)(a-i).

(a) CORNER LOCATION
 1/4 Cor. of Secs. 19 & 20
 Township 37 North
 Range 11 East of the 4th P.M.
 Town of Piehl
 County of Oneida

WISCORS - Oneida County
 N: 178,027.27 USft
 E: 330,030.92 USft
 Datum: NAD 83(2011)
 GNSS Method: RTN - Direct
 GNSS Control: WISCORS VRS



(b) HISTORY OF ORIGINAL CORNER ESTABLISHMENT

Original Surveyor:

Original Accessories:

Date of Survey Commenced:
 Completed:

See previous monument record(s)

(b)(f)(g)(h) Description of monument found at this corner and if it was accepted, state all evidence (material, testimonial, occupational, plats, records, other monuments) used as a basis for accepting. If not accepted or if nothing was found, state evidence used as basis for establishing location. If re-established through lost corner proportionate methods, indicate all monuments, distances and directions used to establish. Indicate type of monument and sign post found or set.

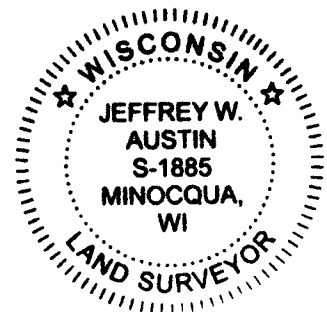
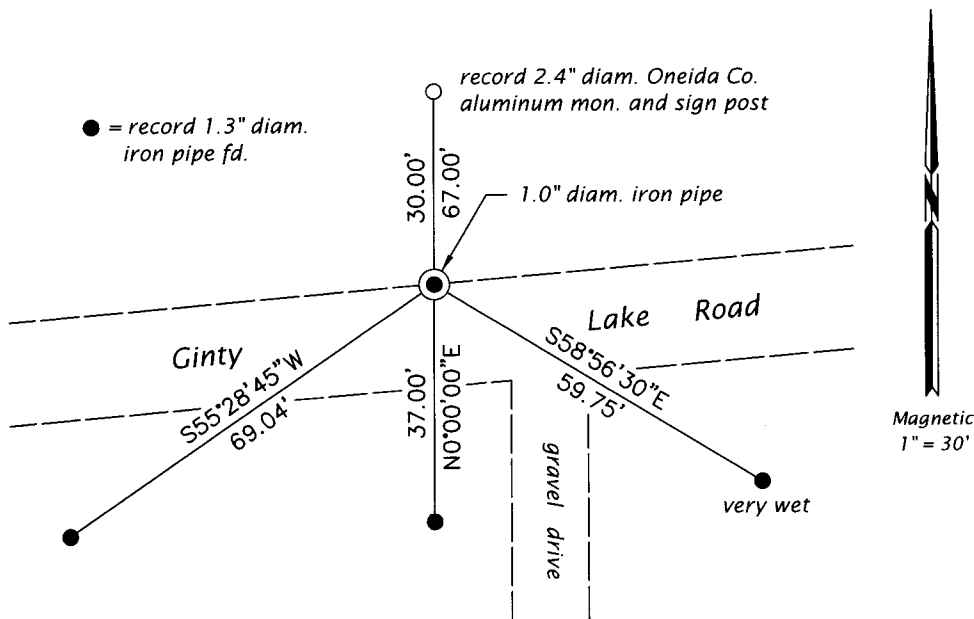
This is a perpetuation of the following monument record(s) that comprise a complete history of the corner:

Oct. 19, 1983: USPLS Monument Record No. 3711192000 by Glen Barker, PLS

Aug. 2, 2019: I was unable to recover the record monument. From the record reference monuments, I set a 1.0" diam., 24" long iron pipe 8" beneath the road edge as shown below. I found or established accessories as shown below.

The coordinate value shown has been verified by at least one of the following methods: 1) comparison to a previously GPS determined published value; 2) the value is the average of two or more GPS observations at a markedly different time; 3) one or more distances were measured back to the GPS observed corner from temporary GPS observed offset locations.

(c)(d)(e) Plan view of corner with ties to at least 4 witness monuments. If in disagreement with previously established corner, show the distances between the two corners and also indicate the ties to the disputed.



REGISTER OF DEEDS OFFICE
 ONEIDA COUNTY
 FILED

JAN 03 2020

KYLE J. FRANSON
 REGISTER OF DEEDS

(i) I, Jeffrey W. Austin, Professional Land Surveyor No. S-1885, hereby certify that the corner location on this record was determined by me or under my direction and control and that this U.S. Public Land Survey Monument Record is correct and complete to the best of my knowledge and belief.

[Handwritten Signature]
 Signature

DEC 23, 2019
 Date