

CERTIFIED LAND CORNER RESTORATION

R 9 Index No. R-9

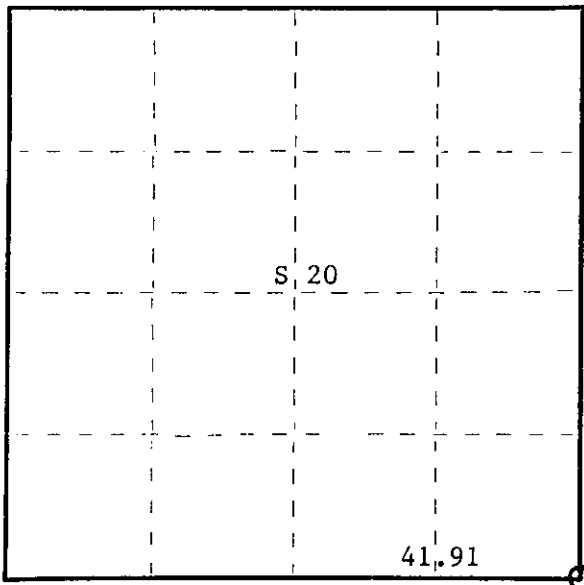
State of Wisconsin }
County of Oneida } ss.

I Philip T. Hansen, do hereby certify that on the 1st day of April, 1975, I found evidence of the Section corner of S20-21-29-28 Township 37 North, Range 11 East, Fourth Principal Meridian, as described hereon; and that from this evidence I established a new monument and accessories as described hereon to perpetuate the original location of this corner.

Resident witnesses:



T37N R11E



○ = Corner monument restored.

History of original corner establishment:

Corner established by Wm. E. Dougherty, Gov. Deputy Surveyor, in 1859. Corner renewed by B.F. Dorr, County Surveyor, in 1885. Corner renewed by D.H. Vaughan in 1906. No original BTs. Corner renewed by V.M. Maine in 1937. No BTs recovered. Set new BTs - spruce 5", N40°E, 20 links; white pine 7", S86°W, 63 links; white pine 4", N24°W, 30½ links. Set iron pipe w/brass cap.

Corner restored by H.C. Lawrence, Registered Land Surveyor, in 1949. He recovered the iron pipe with brass cap. He also recovered an old point of wooden stake, at arms length below the surface. Set a new 3" tamarack in place of the old point.

Description of corner evidence found:

Recovered H.C. Lawrence's wood post, squared, and scribed S20, S21, S28, S29 in good condition. No trace of iron pipe w/brass cap. Lawrence's post was 8' long with about 4' below the surface.

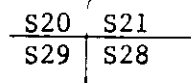
While digging hole to set metal post, recovered an old tip of wood stake well preserved.

Maine's old BTs intact but bearings didn't check.

Description of monument and accessories I established to perpetuate the original location of this corner.

Replaced wooden stake with 2½" galvanized iron pipe w/brass cap, stamped -

- OBT - white pine 12" S86°W 60 links S498
- white pine 10" N14°W 31 links T37N R11E
- NBT - white pine 6" N52°E 61 links, scribed SC BT



CPI-1975

Dated at Rhinelander, Wis., this 16 day of April, 1975.

Signature Philip T. Hansen Title Registered Land Surveyor Registration No. S-498
(County Surveyor, Registered Land Surveyor, or other duly authorized official)

Office of Register of Deeds, County of Oneida I hereby certify that the within instrument was filed in this office for record on the 1st day of October, 1975 at 3:00 o'clock P. M.

Loris Verase Kuhn
(Register of Deeds)

By Deputy

FORM 985 R. C. MILLER CO., MILWAUKEE

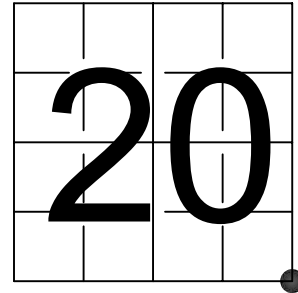
3711200000

U. S. PUBLIC LAND SURVEY MONUMENT RECORD

NOTE: This form is intended and designed to fulfill all requirements of Wisconsin Administrative Code, Chapter A-E 7.08 U.S. Public Land Survey Monument Record (3) (a-i)

A-E 7.08(3)(a) Identity of corner:
SOUTHEAST CORNER SECTION 20,
TOWNSHIP 37 NORTH,
RANGE 11 EAST OF THE 4TH PM,
TOWN OF PIEHL,
COUNTY OF ONEIDA

WISCORS - ONEIDA COUNTY
N: 175,208.812 USft (XXX,XXX.XXX)
E: 335,426.081 USft (XXX,XXX.XXX)
Datum: NAD83 (2011)
GNSS Method RTK
GNSS Control WISCORS VRS



The coordinate value shown has been verified by the average of two or more GPS observations at a markedly different time. Coordinates shown in parenthesis are previously published values.

A-E 7.08(3)(b)

Original Surveyor: William E. Daugherty - August 10, 1859 - August 14, 1859

Original Accessories:

Spruce	6	N 4° E	20 Links
Spruce	5	S 35° W	25 Links

See previous Certified Land Corner Restoration - R-9 - April 16, 1975 - Surveyor 498 - Philip T. Hansen - THENCE:

February 2, 1981, - Surveyor 1537 - Daniel K. Pleoger - indicates this position as "found 2" iron pipe with brass cap" on Oneida County Map #A305.

September 20, 1983 - Surveyor 1682 - Glen Barker - indicates this position as "2 1/2" iron pipe W/brass cap RECOVERY" on Oneida County Map #B489 and #B504.

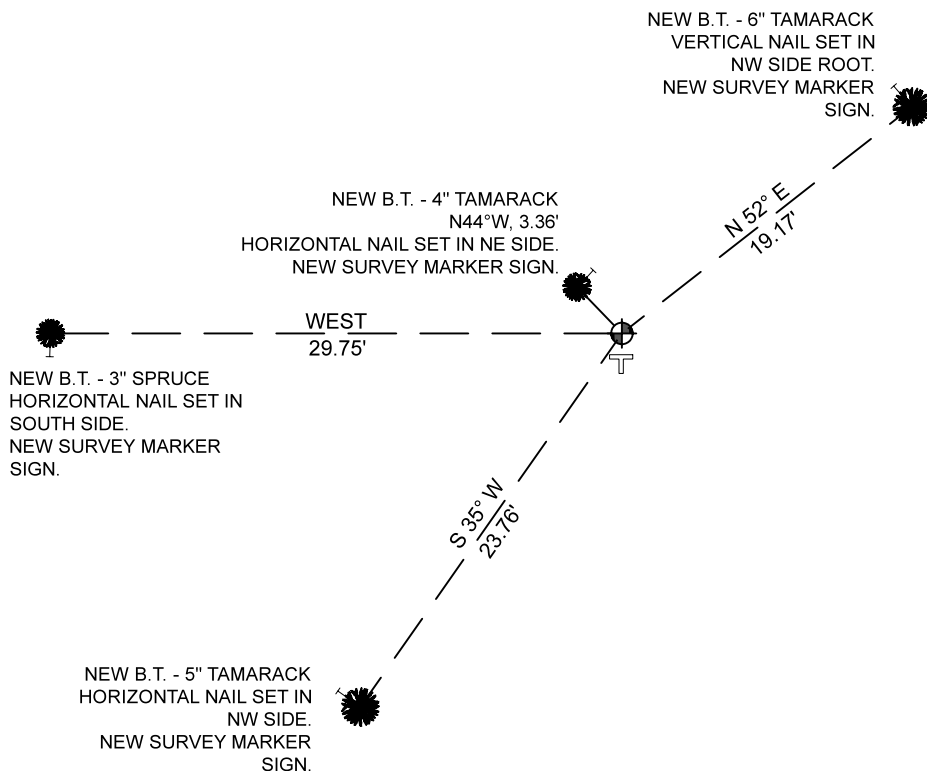
April 16, 1990 - Surveyor 1682 - Glen Barker - indicates this position as "2 1/2" iron pipe W/brass cap found" on Oneida County Map #B3045 and #B4713.

June 11, 2002 - Surveyor 1731 - Kip W. Soder - indicates this position as "2" dia. CPI iron pipe - brass cap monument" on Oneida County Map #B5045.

November 9, 2023 - I found a 2.5" diameter galvanized iron pipe with a 2.5" diameter brass cap stamped to identify the corner location. The monument extends ±24" above grade. I did not find any of Hansen's witnesses, and established 4 new witnesses as shown below.

A-E 7.08(3)(c)(d) Plan view of corner with references to at least 4 witness monuments.

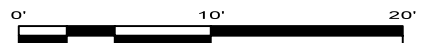
BEARINGS LISTED TO THE NEAREST SECOND ARE REFERENCED TO WISCONSIN COUNTY COORDINATE REFERENCE SYSTEM - ONEIDA COUNTY ZONE. ALL OTHER BEARINGS ARE MAGNETIC.



LEGEND

This Corner

Vinyl T-post, set ±1 foot south of corner



A-E 7.08(3)(e) 1975 Surveyor set a 2 1/2" galvanized iron pipe with a stamped brass cap. Subsequent surveyors found the same, as did I in 2023.

A-E 7.08(3)(f) I accept this monument as a FOUND PERPETUATED LOCATION of the corner.

A-E 7.08(3)(g)(h) This corner was not determined through lost-corner-proportionate methods.

A-E 7.08(3)(i) I, Jeffrey L. DeMuth, Professional Land Surveyor No. S-2656, hereby certify that the corner location on this record was determined by me or under my direction and control, and that this U.S. Public Land Survey Monument Record is correct and complete to the best of my knowledge, and belief.



SIGNATURE

November 21, 2023

DATE

4371120000