

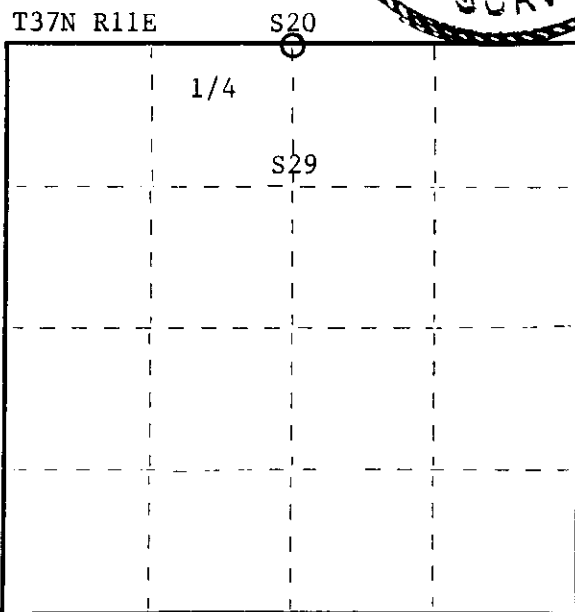
CERTIFIED LAND CORNER RESTORATION

R 7 Index No. R-7

State of Wisconsin } ss.
County of Oneida

I Philip T. Hansen, do hereby certify that on the 16th day of April, 1975, I found evidence of the Quarter corner of Section 20-29 Township 37, North, Range R11E, Fourth Principal Meridian, as described hereon; and that from this evidence I established a new monument and accessories as described hereon to perpetuate the original location of this corner.

Resident witnesses:



○ = Corner monument restored.

History of original corner establishment:

Original corner set by Wm. E. Dougherty, Government Deputy Surveyor, in 1859. BT's fir 6", N82°E, 5 links, fir 6", S39°W, 7 links. Corner recovered by D.H. Vaughan, County Surveyor, in 1906. Later, County Surveyor Maine recovered and set a 2-1/2" iron pipe which agrees with Vaughan's survey, evidenced by Vaughan's hemlock 11", N82½°W, 13 links. Maine's BT's - white pine 34", N6°E, 350 links, white pine 24", S72°E, 162 links, visited later by H.C. Lawrence, Registered Land Surveyor. Found Vaughan's hemlock BT down but scribing okay. Maine's white pine 34" BT standing green. White pine 24" stump, scribing okay.

Description of corner evidence found:

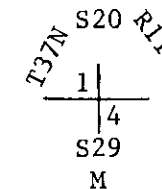
Recovered Maine's 2-1/2" iron pipe with brass cap scribed T37N R11E 1/4 S20 S29 (m)

OBT's - white pine 34" (36") N6° E 350 links scribed S BT
white pine stump 24" S72°E 162 links scribed S BT

Description of monument and accessories I established to perpetuate the original location of this corner.

Maine's iron pipe and the scribing on the brass cap was in good condition, painted blue and left in ground.

NBT's - white spruce 15" S75°E 65.3 links



Dated at Rhinelander, Wis., this 16th day of April, 1975

Signature Philip T. Hansen Title Registered Land Surveyor Registration No. S-498
(County Surveyor, Registered Land Surveyor, or other duly authorized official)

Office of Register of Deeds, County of Oneida I hereby certify that the within instrument was filed in this office for record on the 1st day of October, 1975 at 3:00 o'clock P. M.

Doris Verage Kuehn
(Register of Deeds)

By Deputy

FORM 983 H. C. MILLER CO., MILWAUKEE

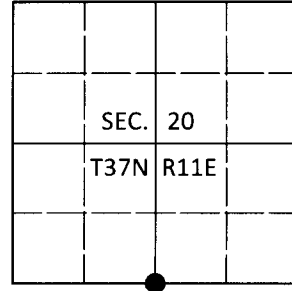
3711200020

U.S. PUBLIC LAND SURVEY MONUMENT RECORD

Note: This form is intended and designed to fulfill all requirements of Wisconsin Administrative Code, Chapter A-E 7.08 U.S. Public Land Survey Monument Record (3)(a-i).

(a) CORNER LOCATION
 1/4 Cor. of Secs. 20 & 29
 Township 37 North
 Range 11 East of the 4th P.M.
 Town of Piehl
 County of Oneida

WISCRS - Oneida County
 N: 175,293.55 USft
 E: 332,664.28 USft
 Datum: NAD 83(2011)
 GNSS Method: RTN - Offset
 GNSS Control: WISCORS VRS



(b) HISTORY OF ORIGINAL CORNER ESTABLISHMENT

Original Surveyor:

Original Accessories:

Date of Survey Commenced:
 Completed:

See previous monument record(s)

(b)(f)(g)(h) Description of monument found at this corner and if it was accepted, state all evidence (material, testimonial, occupational, plats, records, other monuments) used as a basis for accepting. If not accepted or if nothing was found, state evidence used as basis for establishing location. If re-established through lost corner proportionate methods, indicate all monuments, distances and directions used to establish. Indicate type of monument and sign post found or set.

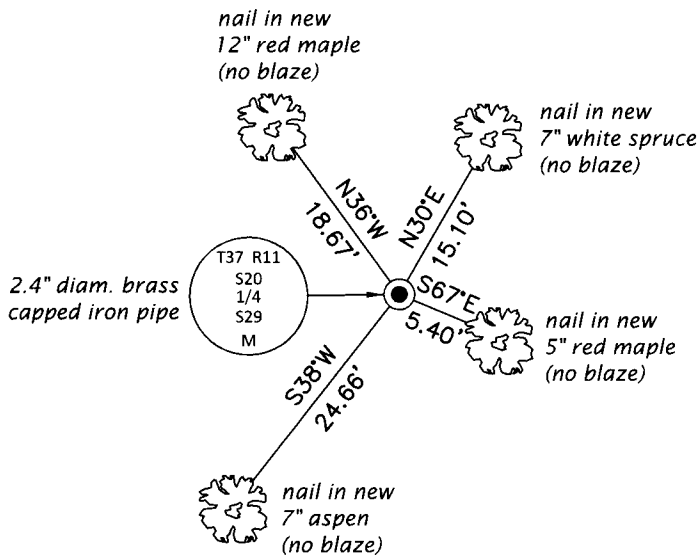
This is a perpetuation of the following monument record(s) that comprise a complete history of the corner:

Apr. 16, 1975: Certified Land Corner Restoration No. 3711200020 by Philip T. Hansen, PLS

Aug. 2, 2019: I found and accepted the record monument, a 2.4" diam. iron pipe with a 2.4" diam. brass cap projecting 30" above the ground surface. The record spruce bearing tree is standing dead. I found or established accessories as shown below. I set a white vinyl sign post bearing Northeast, 0.8 ft.

The coordinate value shown has been verified by at least one of the following methods: 1) comparison to a previously GPS determined published value; 2) the value is the average of two or more GPS observations at a markedly different time; 3) one or more distances were measured back to the GPS observed corner from temporary GPS observed offset locations.

(c)(d)(e) Plan view of corner with ties to at least 4 witness monuments. If in disagreement with previously established corner, show the distances between the two corners and also indicate the ties to the disputed.



REGISTER OF DEEDS OFFICE
 ONEIDA COUNTY
 FILED

JAN 03 2020

KYLE J. FRANSON
 REGISTER OF DEEDS

(i) I, Jeffrey W. Austin, Professional Land Surveyor No. S-1885, hereby certify that the corner location on this record was determined by me or under my direction and control and that this U.S. Public Land Survey Monument Record is correct and complete to the best of my knowledge and belief.

[Handwritten Signature]
 Signature

DEC. 23, 2019
 Date

3711200020 (INDEX NO. R-7)