

Lois Verage Kuehn

REGISTER OF DEEDS

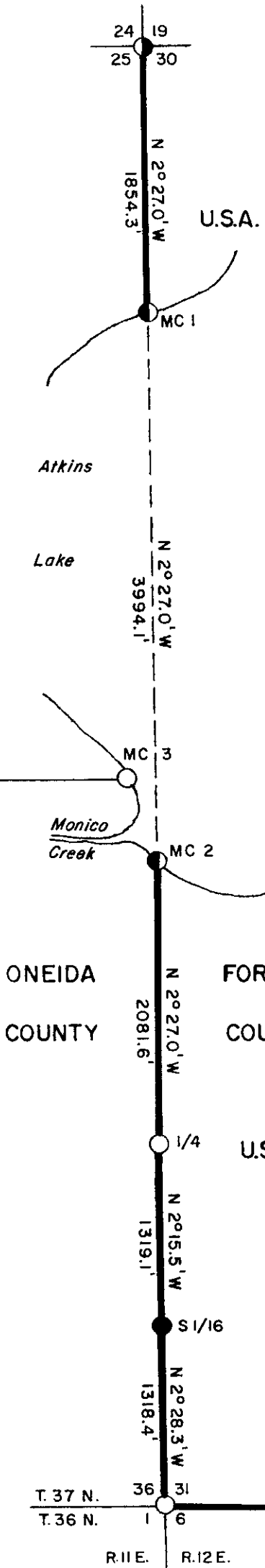
This document has been accepted with advisory review of Robert Kuntz, County Surveyor. The Range and Section Lines are as shown.

CERTIFIED LAND CORNER RESTORATION AND BOUNDARY ESTABLISHMENT

Being the Corners on the Range Line to Sections 19-30-24-25, 31-6-36-1 and 5-6, 31-32 and Quarter Corners to Sections 36-31 and 6-31, and Meander Corners 1, 2 and 3 Townships 36-37 North, Ranges 11-12 East Fourth Principal Meridian FOREST-ONEIDA COUNTIES, WISCONSIN



- 3711 24 00 00
- 3711 25 28 00
- 3711 25 00 02
- 3711 36 37 00
- 3711 36 20 00
- 3711 36 10 00
- 3711 36 00 00



LEGEND

- Forest County Monument, Aluminum Cap
- Oneida County Monument With 2" Brass Cap on Iron Pipe
- 2"x30" Berntsen Aluminum Monument
- 2"x120" Berntsen Aluminum Monument
- 2"x60" Forest Service Monument 3" Brass Cap on Iron Pipe
- Marked Boundary Line of U.S. Government Land

Conversion Factors:
Feet to Meters-0.304801
Meters to Feet-3.280833

3711360000

R-25

Stock No. 26273

Sheet 2 of 4

SURVEY NOTES

This survey was made by the U. S. Department of Agriculture, Forest Service, for the purpose of restoring and establishing corners on the perimeter of Sections 30 and 31, for establishing subdivisional corners, and for locating and marking the boundaries of U. S. Government lands on their perimeter for Sections 30 and 31, Township 36-37 North, Range 11-12 East, Fourth Principal Meridian, Forest County, Wisconsin.

The U. S. Government lands in these sections were acquired in 1932, 1939, and 1978.

The original Government survey of this township was made in 1858 and 1859.

The corner positions recovered, restored, and established by this survey are marked by the monument described in the map legend.

The corner positions established were located to an accuracy of one part in 3000.

The bearings between corner positions are true bearings as determined by solar observations.

The field notes of this survey and a copy of this plat are on file in the Forest Supervisor's Office at Rhinelander, Wisconsin.

CORNERS RECOVERED OR RESTORED1. Township Corner to T.36-37N., R.11-12E.

Corner position found marked by Oneida County brass cap stamped to identify corner set by Vernon Maine in 1935.

Corner References:

Hemlock	18"	N.50°E.	33.65 feet
Sugar Maple	8"	S.69°E.	13.84 feet
Yellow Birch	10"	S.81°W.	17.19 feet
Sugar Maple	7"	N.20°W.	51.40 feet
Steel Sign Post		East	3.40 feet

2. Section Corner to Sections 31, 32, 5, and 6, T.36-37N., R.12E.

Corner position found marked by a Forest County Monument stamped by R.L.S. 498, Phillip Hansen.

Corner References:

Sugar Maple	5"	N.28°E.	29.56 feet
Sugar Maple	12"	S.51°E.	10.96 feet
Sugar Maple	14"	S.48°W.	14.67 feet
Sugar Maple	5"	N.34°W.	5.71 feet
Steel Sign Post		West	1.70 feet

3. Section Corner to Sections 19, 24, 25, and 30, T.37N., R.11-12E.

Corner position found marked by Forest Service brass cap stamped to identify corner. Certificate on file, dated February 13, 1968.

Corner References:

Spruce	3"	N.56°E.	37.21 feet
Tamarack	2"	S.49°E.	75.60 feet
Spruce	4"	S.82°W.	87.64 feet
(NEW) Black Spruce	3"	S.31°E.	26.73 feet
Wood Post with Monument Sign		East	1.35 feet

Stock No. 26273

Sheet 3 of 4

4. Quarter Corner to Sections 31 and 6, T.36-37N., R.12E.
 Corner position found marked by a Forest County Monument stamped to identify corner set by Phillip Hansen, R.L.S. 498.
 Corner References:

Hemlock	12"	N.29°E.	39.81 feet
Yellow Birch	11"	S.40°E.	16.57 feet
Sugar Maple	12"	N.15°W.	18.02 feet
Steel Sign Post	7'	East	2.00 feet

5. Quarter Corner to Sections 36 and 31, T.37N., R.11-12E.
 Corner position found marked by 2" diameter iron pipe with brass cap stamped to identify corner set by H. C. Lawrence, a surveyor for Consolidated Paper Company.
 Corner References:

Cedar	11"	N.35°W.	18.15 feet
Cedar	9"	S.58°E.	20.98 feet
Hemlock	20"	S.20°W.	121.27 feet
Steel Sign Post	7'	North	2.04 feet

6. Meander Corner to Sections 25 and 30, T.37N., R.11-12E., on North Side of Atkins Lake.
 Corner position was restored by single proportionate measure.
 Corner References:

Tamarack	5"	S.48°E.	41.34 feet
Tamarack	5"	S.54°W.	78.89 feet
Tamarack	6"	N.1°W.	48.03 feet
Steel Sign Post		South	2.05 feet

7. Meander Corner to Sections 31 and 36, T.37N., R.11-12E., on South Side of Atkins Lake.
 Corner position was restored by single proportionate measure.
 Corner References:

Tamarack	4"	S.29°E.	97.25 feet
Black Spruce	4"	S.31°W.	66.34 feet
Black Spruce	3"	N.85°W.	27.60 feet
Steel Sign Post		North	1.55 feet

8. Meander Corner to Sections 25 and 36, T.37N., R.11E., on West Side of Atkins Lake.
 Corner position found marked by a brass cap on a 2" pipe set by Vernon Maine in 1938, with a rotted, scribed Cedar post and original BT remains.

CORNER ESTABLISHED

1. South One-Sixteenth to Sections 31 and 36, T.37N., R.11-12E.
 Corner position found marked by a scribed 6" x 6" Cedar post set by H. C. Lawrence in 1958.
 Corner References:

Sugar Maple	15"	N.31°E.	12.40 feet
Basswood	10"	S.50°E.	36.43 feet
Hemlock	14"	N.77°W.	34.36 feet
Steel Sign post		North	1.90 feet

Stock No. 26273

Sheet 4 of 4

SURVEYOR'S AFFIDAVIT

State of Wisconsin
Counties of Forest and Oneida] SS

I, Milo E. Stefan, Cadastral Surveyor, U. S. Forest Service and a registered surveyor in the State of Wisconsin, hereby certify that I have surveyed Sections 30 and 31, Township 36-37 North, Range 11-12 East, Fourth Principal Meridian, State of Wisconsin.

The plat map and the notes herewith are a correct representation of the land surveyed. I have surveyed said sections in accordance with the rules for survey of the public lands and with the statutes of the State of Wisconsin.



Milo E. Stefan
Cadastral Surveyor, U. S. Forest Service
R.L.S., State of Wisconsin
Certificate S-1558

Plat Ready For Filing: Dale D. Stoege

Date of Survey: 1985

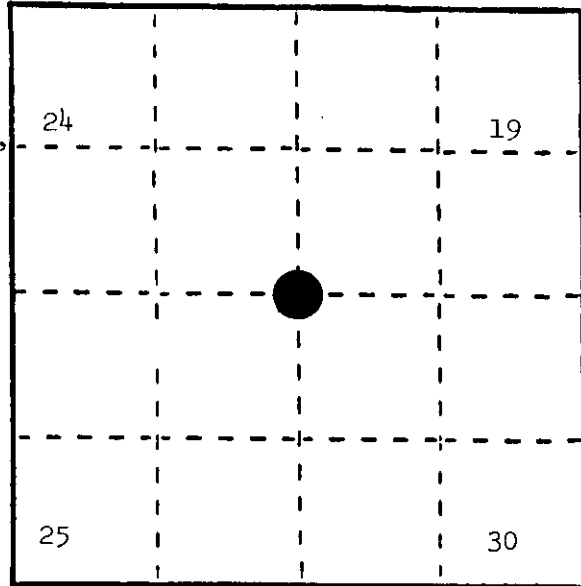
U. S. PUBLIC LAND SURVEY MONUMENT RECORD

INSTRUCTIONS: This record shall show the location of the corner and shall include all of the following nine elements (a through i).

(a) Identify the corner by reference to the U.S. public land survey system.

○ = Corner monument restored.

Section corner to Sections 19, 24, 25, and 30, T.37N., R.11-12E., Forest County and Oneida County, Wisconsin.



(b) Describe any record evidence, monument evidence, occupational evidence, testimonial evidence or any other material evidence you considered, and whether the monument was found or placed.

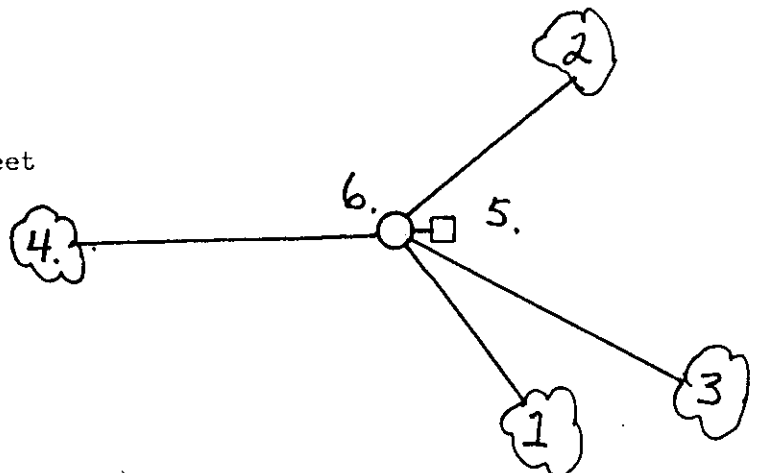
See corner certificate on file dated February 13, 1968.

In 1984, Milo Stefan found corner as called for on filed certificate, made new references.

(c) In the plan view drawing below, provide reference ties to at least 4 witness monuments, or, if the location is within a municipality, to at least 2 witness monuments. (Witness monuments shall be made of concrete, natural stone, iron or other equally durable material.) Describe witness monuments.

(d) Show a plan view drawing depicting the relevant monuments and reference ties which is sufficient in detail to enable accurate relocation of the corner monument if the corner monument is disturbed. Indicate north.

1. Black Spruce, 3", S.31°E., 26.73 feet
2. Spruce, 3", N.56°E., 37.21 feet
3. Tamarack, 2", S.49°E., 75.60 feet
4. Spruce, 4", S.82°W., 87.64 feet
5. Wood post with monument sign, East, 1.35 feet
6. 2" inside diameter iron pipe with a brass cap stamped to identify the corner.



(e) Describe any material discrepancy between the location of the corner as restored or reestablished and the location of that corner as previously restored or reestablished by distance and direction. Show the discrepancy on the plan view drawing under (d), above. Show the distances between the corner as previously restored or reestablished and (1) the corner as restored or reestablished, and (2) to at least 2 of the witness monuments shown on the drawing in (d), above.

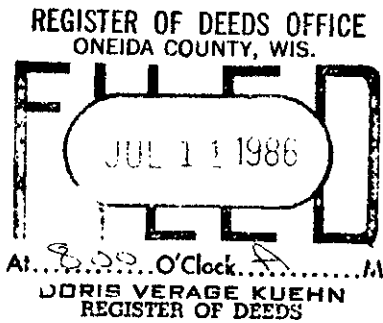
See certificate on file.

(f) Was the corner restored through acceptance of (1) an obliterated evidence location, or, (2) a found perpetuated location?

See certificate on file.

(g&h) Was the corner reestablished through lost corner proportionate methods? If so, show the method, including the directions and distances to other public land survey corners used as evidence or used for proportioning in determining the corner location?

See certificate on file.



Doc # 129824
3/14/86

(1) I, Milo E. Stefan
(type or print name) certify that the corner location shown on this record was determined by me or under my direction and control and that this U.S. Public Land Survey Monument Record is correct and complete to the best of my knowledge and belief.

Milo E. Stefan
Signature

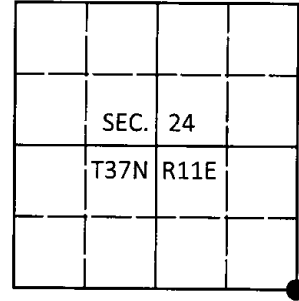
5/28/85
Date

U.S. PUBLIC LAND SURVEY MONUMENT RECORD

Note: This form is intended and designed to fulfill all requirements of Wisconsin Administrative Code, Chapter A-E 7.08 U.S. Public Land Survey Monument Record (3)(a-i).

(a) CORNER LOCATION
Cor. of Secs. 19, 24, 25 & 30
Township 37 North
Range 11 & 12 East of the 4th P.M.
Town of Piehl
County of Oneida

WISCRS - Oneida County
N: 175,463.93 USft
E: 357,218.38 USft
Datum: NAD 83(2011)
GNSS Method: Real-Time Network
GNSS Control: WISCORS VRS



(b) HISTORY OF ORIGINAL CORNER ESTABLISHMENT

Original Surveyor: Original Accessories:

Date of Survey Commenced:
Completed:

(b)(f)(g)(h) Description of monument found at this corner and if it was accepted, state all evidence (material, testimonial, occupational, plats, records, other monuments) used as a basis for accepting. If not accepted or if nothing was found, state evidence used as basis for establishing location. If re-established through lost corner proportionate methods, indicate all monuments, distances and directions used to establish. Indicate type of monument and sign post found or set.

This is a perpetuation of a previous USPLS Monument Record by Milo E. Stefan, RLS dated May 28, 1985 and filed in the office of the Oneida County Register of Deeds. A complete history of the corner can be found on the previous monument record. I accept the previous location as a true and faithful perpetuation or reestablishment of the original corner location and further perpetuate it as follows.

August 28, 2016: I found and accepted the record monument, a 2-1/2" diam. iron pipe with a 3" diam. brass cap projecting 12" above the ground surface. The existing accessories were found in substantial agreement with the record and were not remeasured as the sole purpose of this work is to report the coordinates of the corner point.

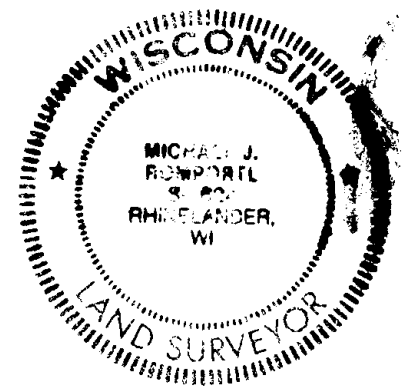
The coordinate value shown has been verified by at least one of the following methods: 1) comparison to a previously GPS determined published value; 2) the value is the average of two or more GPS observations at a markedly different time; 3) one or more distances were measured back to the GPS observed corner from temporary GPS observed offset locations.

(c)(d)(e) Plan view of corner with ties to at least 4 witness monuments. If in disagreement with previously established corner, show the distances between the two corners and also indicate the ties to the disputed.

REGISTER OF DEEDS OFFICE
ONEIDA COUNTY
FILED

DEC 28 2016

AT _____ O'CLOCK _____ M
KYLE J. FRANSON
REGISTER OF DEEDS



(i) I, Michael J. Romportl, Professional Land Surveyor No. S-1624, hereby certify that the corner location on this record was determined by me or under my direction and control and that this U.S. Public Land Survey Monument Record is correct and complete to the best of my knowledge and belief.

Michael J Romportl 12/23/2016
Signature Date