

CERTIFIED LAND CORNER RESTORATION

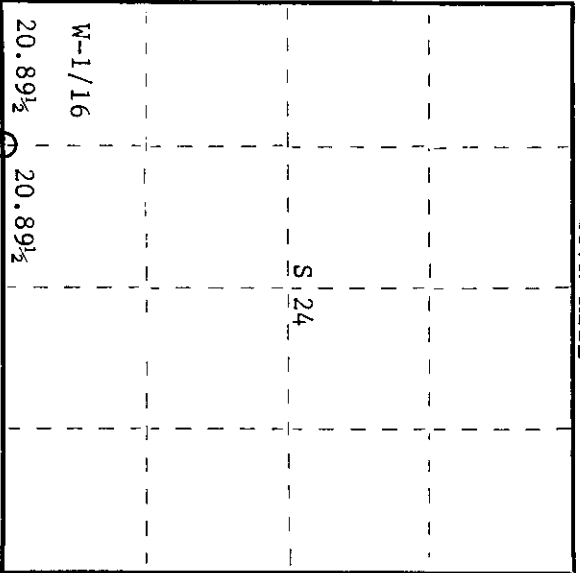
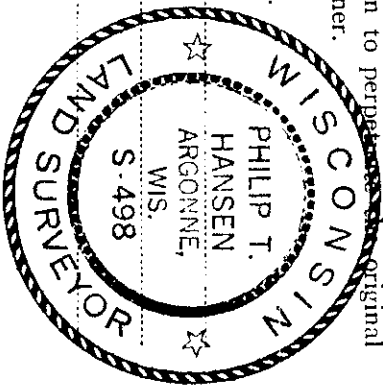
R 22 Index No. R-22

State of Wisconsin

County of Oneida } ss.

I Philip T. Hansen, do hereby certify that on the 22nd day of July, 1975, I found evidence of the W-1/16 corner of Sections 24 and 25 Township 37 North, Range 11 East, Fourth Principal Meridian, as described hereon; and that from this evidence I established a new monument and accessories as described hereon to perpetuate the original location of this corner.

Resident witnesses.



○ = Corner monument restored.

CERTIFIED LAND CORNER RESTORATION

History of original corner establishment:

Corner established by J.J. Melendy, Gagen Lbr. Co. Surveyor, in 1916. He ran line east from NW Cor. Section 25, 41.79 chains to intersect N-S 1/4-line 10 links south of N-1/4 corner.

Set W-1/16 corner. 5" cedar stake at 20.89-1/2 chains, from which pine 14" bears S11-1/4E 141 links. Also, hacked an "X" on top of south rail of spur track, North 41-1/2 links. Corner recovered by H.C. Lawrence, Registered Land Surveyor in 1948. Recovered old post and pine tree, now down, S11-1/4E 141 links. Set new cedar post. No record of NBT's.

Description of corner evidence found:

Recovered Lawrence's 4" cedar post, squared and scribed W-1/16 S24, W-1/16 S25 in poor condition. Also, a squared cedar post wired to Lawrence's stake scribed S-1/8.

No evidence of down pine S11015'E.

While digging the new hole for stake, found points of old stakes in the muck.

Description of monument and accessories I established to perpetuate the original location of this corner.

Replaced 4" cedar post with 1-1/2" O.D. iron pipe with brass cap stamped -

NBT - Tamarack 3" S41°W 47.6 links - scribed 1/16 BT. S498
Tamarack 3" N38°E 79.3 links - scribed 1/16 BT. T37N R11E

This is a marsh area and no other suitable trees for BT's.

W-1/16 S 24
S 25
CPI-1975

Dated at Rhinelander, Wis., this 31st day of July, 1975.

Signature: *Philip T. Hansen* Title: Registered Land Surveyor Registration No S-498
(County Surveyor, Registered Land Surveyor, or other duly authorized official)

Office of Register of Deeds, County of Oneida
Instrument was filed in this office for record on the 1st day of October, 1975
at 3:00 o'clock P.M.

Donna Savage Kuehn
(Register of Deeds)

By: Deputy

3711240030