

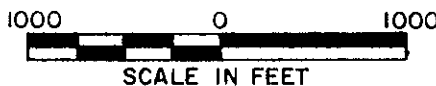
Lois Verage Kudva

This document has been accepted with advisory review of Robert ... County ...

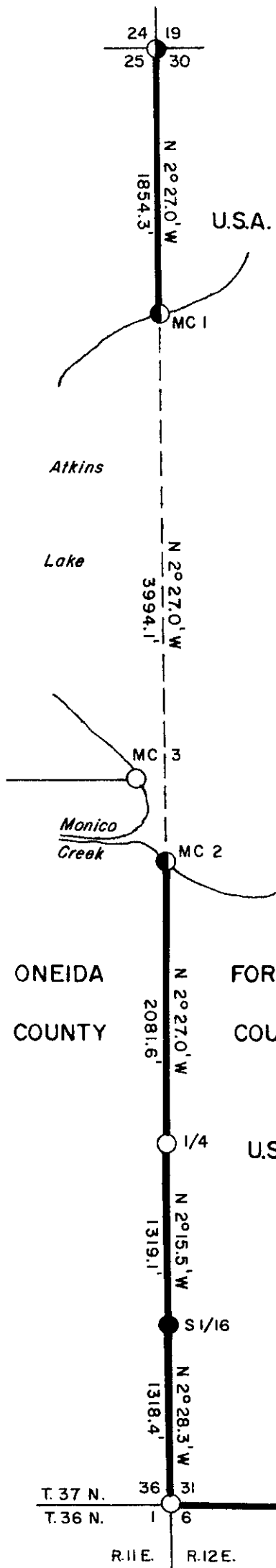
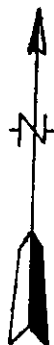
REGISTER OF DEEDS

CERTIFIED LAND CORNER RESTORATION AND BOUNDARY ESTABLISHMENT

Being the Corners on the Range Line to Sections 19-30-24-25, 31-6-36-1 and 5-6, 31-32 and Quarter Corners to Sections 36-31 and 6-31, and Meander Corners 1, 2 and 3 Townships 36-37 North, Ranges 11-12 East Fourth Principal Meridian FOREST- ONEIDA COUNTIES , WISCONSIN



- 3711 24 0000
- 3711 25 2800
- 3711 25 0002
- 3711 36 3700
- 3711 36 2000
- 3711 36 1000
- 3711 36 0000



LEGEND

- Forest County Monument, Aluminum Cap
- Oneida County Monument With 2" Brass Cap on Iron Pipe
- 2" x 30" Berntsen Aluminum Monument
- 2" x 120" Berntsen Aluminum Monument
- 2" x 60" Forest Service Monument 3" Brass Cap on Iron Pipe
- Marked Boundary Line of U.S. Government Land

Conversion Factors:
Feet to Meters-0.304801
Meters to Feet-3.280833

371136 0000

R-25

Stock No. 26273

Sheet 2 of 4

SURVEY NOTES

This survey was made by the U. S. Department of Agriculture, Forest Service, for the purpose of restoring and establishing corners on the perimeter of Sections 30 and 31, for establishing subdivisional corners, and for locating and marking the boundaries of U. S. Government lands on their perimeter for Sections 30 and 31, Township 36-37 North, Range 11-12 East, Fourth Principal Meridian, Forest County, Wisconsin.

The U. S. Government lands in these sections were acquired in 1932, 1939, and 1978.

The original Government survey of this township was made in 1858 and 1859.

The corner positions recovered, restored, and established by this survey are marked by the monument described in the map legend.

The corner positions established were located to an accuracy of one part in 3000.

The bearings between corner positions are true bearings as determined by solar observations.

The field notes of this survey and a copy of this plat are on file in the Forest Supervisor's Office at Rhinelander, Wisconsin.

CORNERS RECOVERED OR RESTORED1. Township Corner to T.36-37N., R.11-12E.

Corner position found marked by Oneida County brass cap stamped to identify corner set by Vernon Maine in 1935.

Corner References:

Hemlock	18"	N.50°E.	33.65 feet
Sugar Maple	8"	S.69°E.	13.84 feet
Yellow Birch	10"	S.81°W.	17.19 feet
Sugar Maple	7"	N.20°W.	51.40 feet
Steel Sign Post		East	3.40 feet

2. Section Corner to Sections 31, 32, 5, and 6, T.36-37N., R.12E.

Corner position found marked by a Forest County Monument stamped by R.L.S. 498, Phillip Hansen.

Corner References:

Sugar Maple	5"	N.28°E.	29.56 feet
Sugar Maple	12"	S.51°E.	10.96 feet
Sugar Maple	14"	S.48°W.	14.67 feet
Sugar Maple	5"	N.34°W.	5.71 feet
Steel Sign Post		West	1.70 feet

3. Section Corner to Sections 19, 24, 25, and 30, T.37N., R.11-12E.

Corner position found marked by Forest Service brass cap stamped to identify corner. Certificate on file, dated February 13, 1968.

Corner References:

Spruce	3"	N.56°E.	37.21 feet
Tamarack	2"	S.49°E.	75.60 feet
Spruce	4"	S.82°W.	87.64 feet
(NEW) Black Spruce	3"	S.31°E.	26.73 feet
Wood Post with Monument Sign		East	1.35 feet

Stock No. 26273

Sheet 3 of 4

4. Quarter Corner to Sections 31 and 6, T.36-37N., R.12E.
 Corner position found marked by a Forest County Monument stamped to identify corner set by Phillip Hansen, R.L.S. 498.
 Corner References:

Hemlock	12"	N.29°E.	39.81 feet
Yellow Birch	11"	S.40°E.	16.57 feet
Sugar Maple	12"	N.15°W.	18.02 feet
Steel Sign Post	7'	East	2.00 feet

5. Quarter Corner to Sections 36 and 31, T.37N., R.11-12E.
 Corner position found marked by 2" diameter iron pipe with brass cap stamped to identify corner set by H. C. Lawrence, a surveyor for Consolidated Paper Company.
 Corner References:

Cedar	11"	N.35°W.	18.15 feet
Cedar	9"	S.58°E.	20.98 feet
Hemlock	20"	S.20°W.	121.27 feet
Steel Sign Post	7'	North	2.04 feet

6. Meander Corner to Sections 25 and 30, T.37N., R.11-12E., on North Side of Atkins Lake.
 Corner position was restored by single proportionate measure.
 Corner References:

Tamarack	5"	S.48°E.	41.34 feet
Tamarack	5"	S.54°W.	78.89 feet
Tamarack	6"	N.1°W.	48.03 feet
Steel Sign Post		South	2.05 feet

7. Meander Corner to Sections 31 and 36, T.37N., R.11-12E., on South Side of Atkins Lake.
 Corner position was restored by single proportionate measure.
 Corner References:

Tamarack	4"	S.29°E.	97.25 feet
Black Spruce	4"	S.31°W.	66.34 feet
Black Spruce	3"	N.85°W.	27.60 feet
Steel Sign Post		North	1.55 feet

8. Meander Corner to Sections 25 and 36, T.37N., R.11E., on West Side of Atkins Lake.
 Corner position found marked by a brass cap on a 2" pipe set by Vernon Maine in 1938, with a rotted, scribed Cedar post and original BT remains.

CORNER ESTABLISHED

1. South One-Sixteenth to Sections 31 and 36, T.37N., R.11-12E.
 Corner position found marked by a scribed 6" x 6" Cedar post set by H. C. Lawrence in 1958.
 Corner References:

Sugar Maple	15"	N.31°E.	12.40 feet
Basswood	10"	S.50°E.	36.43 feet
Hemlock	14"	N.77°W.	34.36 feet
Steel Sign post		North	1.90 feet

Stock No. 26273

Sheet 4 of 4

SURVEYOR'S AFFIDAVIT

State of Wisconsin
Counties of Forest and Oneida] SS

I, Milo E. Stefan, Cadastral Surveyor, U. S. Forest Service and a registered surveyor in the State of Wisconsin, hereby certify that I have surveyed Sections 30 and 31, Township 36-37 North, Range 11-12 East, Fourth Principal Meridian, State of Wisconsin.

The plat map and the notes herewith are a correct representation of the land surveyed. I have surveyed said sections in accordance with the rules for survey of the public lands and with the statutes of the State of Wisconsin.



Milo E. Stefan
Cadastral Surveyor, U. S. Forest Service
R.L.S., State of Wisconsin
Certificate S-1558

Plat Ready For Filing: Dale D. Stoege

Date of Survey: 1985

U.S. PUBLIC LAND SURVEY MONUMENT RECORD

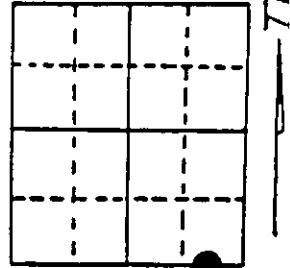
Note: This form is intended and designed to fulfill all requirements of Wisconsin Administrative Code, Chapter A-E 7.08 U.S. Public Land Survey Monument Record (3) (a) (b) (c) (d) (e) (f) (g) (h) (i). An additional sheet may be added if necessary to conform with said requirements.

(a) Corner location: Township 37 North

Range 11 East/West

Town/City/Village Piehl

County Oneida



Section 25

(b) (f) (g) (h) Description of monument found at this corner and if it was accepted, state all evidence (material, testimonial, occupational, plats, records, other monuments) used as a basis for accepting. If not accepted or if nothing was found, state evidence used as basis for establishing location. If reestablished through lost corner proportionate methods, indicate all monuments, distances and directions used to establish. Indicate type of monument found or set and sign post.

1863 - Wm. Daugherty established this Meander Corner on West Shore of a lake and set a wood post with two BTs:

- Tamarack, S17°W, 15 Lks (9.9')
- Tamarack, N89°W, 21 Lks (13.86')

1890's - Melendy's found both original BTs standing, but dead. Made two new BTs:

- 10" Tamarack, S17½°E, 81¼ Lks (53.625')
- 10" Tamarack, S41°W, 42 Lks (27.72')

1937 - Maine found corner and set a 2" iron pipe/brass cap.

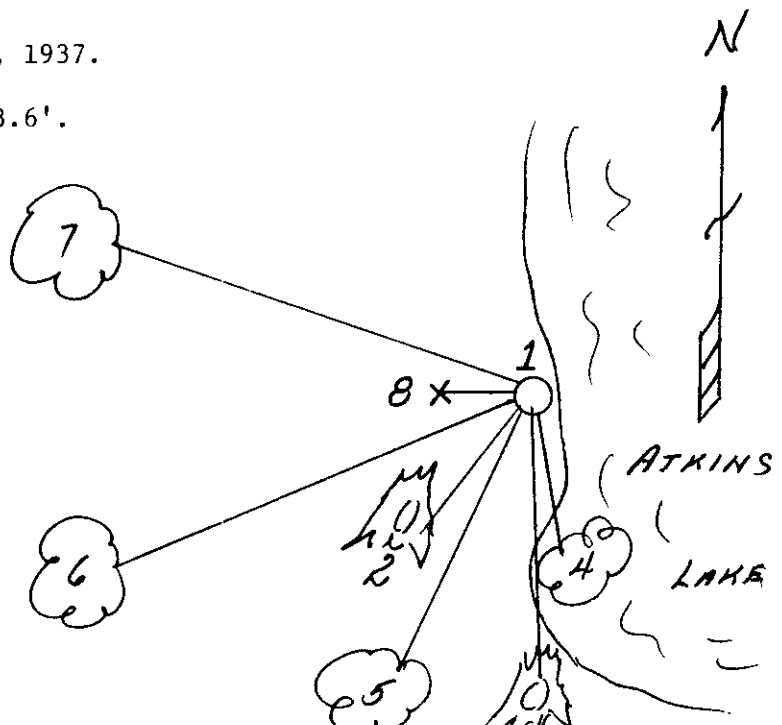
1985 & 11/19/92 - Milo E. Stefan found Maine's monument in good condition; original BT stump, S17°W, 9.9'; Melendy's BT stump S17½°E, 53.6'.

We made four new BTs and set steel sign post.

(c) (d) (e) Plan view of corner with ties to at least 4 witness monuments. If in disagreement with previously established corner, show the distances between the two corners and also indicate the ties to the disputed corner.

- 1) 2" x 60" iron pipe/brass cap by Maine, 1937.
- 2) Tamarack Stump (orig.), S17°W, 9.9'.
- 3) Tamarack Stump (Melendy's), S17½°E, 53.6'.
- 4) 3" Tamarack, S29°E, 15.15'.
- 5) 6" Tamarack, S11°W, 61.90'.
- 6) 6" Tamarack, S68°W, 94.70'.
- 7) 6" Tamarack, N70°W, 95.29'.
- 8) Steel sign post, West, 2.0'.

Stump blaze scribed "BT".
Distances to nail in side of BTs.



(i) I, Milo E. Stefan
(type or print name) certify that the corner location on this record was determined by me or under my direction and control and that this U.S. Public Land Survey Monument Record is correct and complete to the best of my knowledge and belief.

Milo E. Stefan
Signature

December 7, 1992
Date



Stamp
3711250002

Index No. V=24. 25