

Doris Herge Kuehn

This document has been accepted with advisory review of Robert Sturtevant, County Surveyor, Oneida County, Wisconsin.

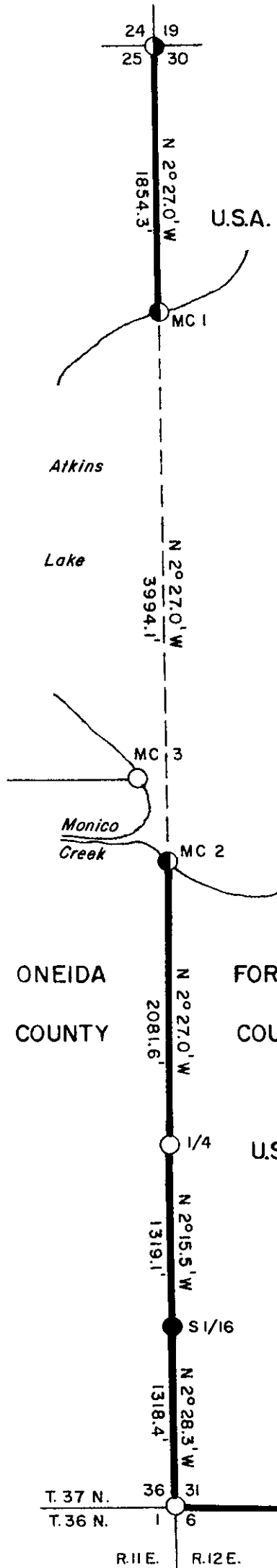
REGISTER OF DEEDS

CERTIFIED LAND CORNER RESTORATION AND BOUNDARY ESTABLISHMENT

Being the Corners on the Range Line to Sections 19-30-24-25, 31-6-36-1 and 5-6, 31-32 and Quarter Corners to Sections 36-31 and 6-31, and Meander Corners 1, 2 and 3 Townships 36-37 North, Ranges 11-12 East Fourth Principal Meridian FOREST- ONEIDA COUNTIES , WISCONSIN



- 3711 24 00 00
- 3711 25 28 00
- 3711 25 00 02
- 3711 36 37 00
- 3711 36 20 00
- 3711 36 10 00
- 3711 36 00 00



LEGEND

- Forest County Monument, Aluminum Cap
- Oneida County Monument With 2" Brass Cap on Iron Pipe
- 2"x30" Berntsen Aluminum Monument
- 2"x120" Berntsen Aluminum Monument
- 2"x60" Forest Service Monument 3" Brass Cap on Iron Pipe
- Marked Boundary Line of U.S. Government Land

Conversion Factors:
Feet to Meters-0.304801
Meters to Feet-3.280833

371136 0000

R-25

Stock No. 26273

Sheet 2 of 4

SURVEY NOTES

This survey was made by the U. S. Department of Agriculture, Forest Service, for the purpose of restoring and establishing corners on the perimeter of Sections 30 and 31, for establishing subdivisional corners, and for locating and marking the boundaries of U. S. Government lands on their perimeter for Sections 30 and 31, Township 36-37 North, Range 11-12 East, Fourth Principal Meridian, Forest County, Wisconsin.

The U. S. Government lands in these sections were acquired in 1932, 1939, and 1978.

The original Government survey of this township was made in 1858 and 1859.

The corner positions recovered, restored, and established by this survey are marked by the monument described in the map legend.

The corner positions established were located to an accuracy of one part in 3000.

The bearings between corner positions are true bearings as determined by solar observations.

The field notes of this survey and a copy of this plat are on file in the Forest Supervisor's Office at Rhinelander, Wisconsin.

CORNERS RECOVERED OR RESTORED1. Township Corner to T.36-37N., R.11-12E.

Corner position found marked by Oneida County brass cap stamped to identify corner set by Vernon Maine in 1935.

Corner References:

Hemlock	18"	N.50°E.	33.65 feet
Sugar Maple	8"	S.69°E.	13.84 feet
Yellow Birch	10"	S.81°W.	17.19 feet
Sugar Maple	7"	N.20°W.	51.40 feet
Steel Sign Post		East	3.40 feet

2. Section Corner to Sections 31, 32, 5, and 6, T.36-37N., R.12E.

Corner position found marked by a Forest County Monument stamped by R.L.S. 498, Phillip Hansen.

Corner References:

Sugar Maple	5"	N.28°E.	29.56 feet
Sugar Maple	12"	S.51°E.	10.96 feet
Sugar Maple	14"	S.48°W.	14.67 feet
Sugar Maple	5"	N.34°W.	5.71 feet
Steel Sign Post		West	1.70 feet

3. Section Corner to Sections 19, 24, 25, and 30, T.37N., R.11-12E.

Corner position found marked by Forest Service brass cap stamped to identify corner. Certificate on file, dated February 13, 1968.

Corner References:

Spruce	3"	N.56°E.	37.21 feet
Tamarack	2"	S.49°E.	75.60 feet
Spruce	4"	S.82°W.	87.64 feet
(NEW) Black Spruce	3"	S.31°E.	26.73 feet
Wood Post with Monument Sign		East	1.35 feet

Stock No. 26273

Sheet 3 of 4

4. Quarter Corner to Sections 31 and 6, T.36-37N., R.12E.
 Corner position found marked by a Forest County Monument stamped to identify corner set by Phillip Hansen, R.L.S. 498.
 Corner References:

Hemlock	12"	N.29°E.	39.81 feet
Yellow Birch	11"	S.40°E.	16.57 feet
Sugar Maple	12"	N.15°W.	18.02 feet
Steel Sign Post	7'	East	2.00 feet

5. Quarter Corner to Sections 36 and 31, T.37N., R.11-12E.
 Corner position found marked by 2" diameter iron pipe with brass cap stamped to identify corner set by H. C. Lawrence, a surveyor for Consolidated Paper Company.
 Corner References:

Cedar	11"	N.35°W.	18.15 feet
Cedar	9"	S.58°E.	20.98 feet
Hemlock	20"	S.20°W.	121.27 feet
Steel Sign Post	7'	North	2.04 feet

6. Meander Corner to Sections 25 and 30, T.37N., R.11-12E., on North Side of Atkins Lake.
 Corner position was restored by single proportionate measure.
 Corner References:

Tamarack	5"	S.48°E.	41.34 feet
Tamarack	5"	S.54°W.	78.89 feet
Tamarack	6"	N.1°W.	48.03 feet
Steel Sign Post		South	2.05 feet

7. Meander Corner to Sections 31 and 36, T.37N., R.11-12E., on South Side of Atkins Lake.
 Corner position was restored by single proportionate measure.
 Corner References:

Tamarack	4"	S.29°E.	97.25 feet
Black Spruce	4"	S.31°W.	66.34 feet
Black Spruce	3"	N.85°W.	27.60 feet
Steel Sign Post		North	1.55 feet

8. Meander Corner to Sections 25 and 36, T.37N., R.11E., on West Side of Atkins Lake.
 Corner position found marked by a brass cap on a 2" pipe set by Vernon Maine in 1938, with a rotted, scribed Cedar post and original BT remains.

CORNER ESTABLISHED

1. South One-Sixteenth to Sections 31 and 36, T.37N., R.11-12E.
 Corner position found marked by a scribed 6" x 6" Cedar post set by H. C. Lawrence in 1958.
 Corner References:

Sugar Maple	15"	N.31°E.	12.40 feet
Basswood	10"	S.50°E.	36.43 feet
Hemlock	14"	N.77°W.	34.36 feet
Steel Sign post		North	1.90 feet

Stock No. 26273

Sheet 4 of 4

SURVEYOR'S AFFIDAVIT

State of Wisconsin
 Counties of Forest and Oneida] SS

I, Milo E. Stefan, Cadastral Surveyor, U. S. Forest Service and a registered surveyor in the State of Wisconsin, hereby certify that I have surveyed Sections 30 and 31, Township 36-37 North, Range 11-12 East, Fourth Principal Meridian, State of Wisconsin.

The plat map and the notes herewith are a correct representation of the land surveyed. I have surveyed said sections in accordance with the rules for survey of the public lands and with the statutes of the State of Wisconsin.



Milo E. Stefan
 Cadastral Surveyor, U. S. Forest Service
 R.L.S., State of Wisconsin
 Certificate S-1558

Plat Ready For Filing: Dale D. Stoege

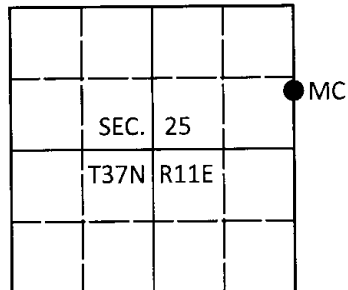
Date of Survey: 1985

U.S. PUBLIC LAND SURVEY MONUMENT RECORD

Note: This form is intended and designed to fulfill all requirements of Wisconsin Administrative Code, Chapter A-E 7.08 U.S. Public Land Survey Monument Record (3)(a-1).

(a) CORNER LOCATION
 Meander Cor. of Secs. 25 & 30
 Township 37 North
 Range 11 & 12 East of the 4th P.M.
 Town of Piehl
 County of Oneida

WISCRS - Oneida County
 N: 173,609.49 USft
 E: 357,228.10 USft
 Datum: NAD 83(2011)
 GNSS Method: RTN Direct
 GNSS Control: WISCORS VRS



(b) HISTORY OF ORIGINAL CORNER ESTABLISHMENT

Original Surveyor: _____ Original Accessories: _____

Date of Survey _____ Commenced: _____
 Completed: _____

(b)(f)(g)(h) Description of monument found at this corner and if it was accepted, state all evidence (material, testimonial, occupational, plats, records, other monuments) used as a basis for accepting. If not accepted or if nothing was found, state evidence used as basis for establishing location. If re-established through lost corner proportionate methods, indicate all monuments, distances and directions used to establish. Indicate type of monument and sign post found or set.

This is a perpetuation of a Certified Land Corner Restoration by Milo E. Stefan, RLS dated 1985 and filed in the office of the Oneida County Register of Deeds. A complete history of the corner can be found on the previous monument record. I accept the previous location as a true and faithful perpetuation or reestablishment of the original corner location and further perpetuate it as follows.

September 11, 2016: I found and accepted the record monument, a 2-1/2" diam. aluminum pipe with a 3-1/4" diam. aluminum cap projecting 4" above the bog surface. The existing accessories were found in substantial agreement with the record and were not remeasured as the sole purpose of this work is to report the coordinates of the corner point.

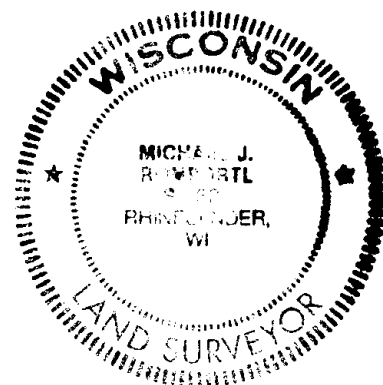
The coordinate value shown has been verified by at least one of the following methods: 1) comparison to a previously GPS determined published value; 2) the value is the average of two or more GPS observations at a markedly different time; 3) one or more distances were measured back to the GPS observed corner from temporary GPS observed offset locations.

(c)(d)(e) Plan view of corner with ties to at least 4 witness monuments. If in disagreement with previously established corner, show the distances between the two corners and also indicate the ties to the disputed.

REGISTER OF DEEDS OFFICE
 ONEIDA COUNTY
 FILED

DEC 28 2016

AT _____ O'CLOCK _____ M
 KYLE J. FRANSON
 REGISTER OF DEEDS



(i) I, Michael J. Romportl, Professional Land Surveyor No. S-1624, hereby certify that the corner location on this record was determined by me or under my direction and control and that this U.S. Public Land Survey Monument Record is correct and complete to the best of my knowledge and belief.

Michael J Romportl 12/23/2016
 Signature Date