

CERTIFIED LAND CORNER RESTORATION

Index No. **V-21**
V 21

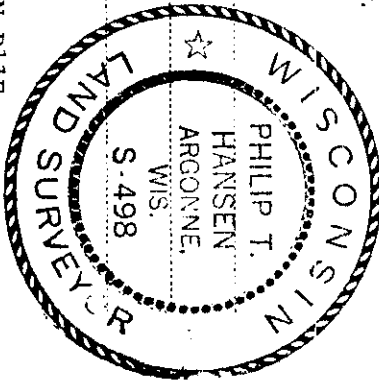
State of Wisconsin

County of Oneida } ss.

I Phillip T. Hansen, do hereby certify that on the 28th day of May, 1975, I found evidence of the Section corner of 25-26-35-36 Township 37, North, Range 11 East, Fourth Principal Meridian,

as described hereon; and that from this evidence I established a new monument and accessories as described hereon to perpetuate the original location of this corner.

Resident witnesses:



T37N R11E

History of original corner establishment:
Original corner established by Wm. E. Dougherty, Government Deputy Surveyor, in 1859, from which Sugar 14" bears W66°E 23 links, Sugar 10" S83°W 54 links. Corner recovered by J.A. Melendy in 1916. Although he does not mention identifying the original corner, he states he set a 4" x 4" hemlock post in the old hole. Set BT - hemlock N49°E 58 links. Corner recovered by V.M. Maine, set a 2½" iron pipe with brass cap stamped - T37N R11E Corner recovered by H.C. Lawrence, Registered Land Surveyor, in 1948, during his retracement survey. Recovered Melendy's hemlock post and Maine's iron pipe. Set new 4" cedar post in place of Melendy's wooden post.

S25 | S26
S35 | S36

Description of corner evidence found:
Recovered H.C. Lawrence's 4" cedar post, squared and scribed S25 S26, S35 S36 in poor condition. Also recovered a 4" x 4" x 18" post lying beside it. Also recovered Maine's 2½" iron pipe setting beside the wooden posts.
Recovered OBT - sugar 17" S19°E 37 links, scribed S36 BT.
Sugar 12" N18°W 54.3 links; tree cut to 5' stump, scribed S26 BT.

Description of monument and accessories I established to perpetuate the original location of this corner.
Replaced 4" cedar post with 2½" iron pipe with brass cap stamped -

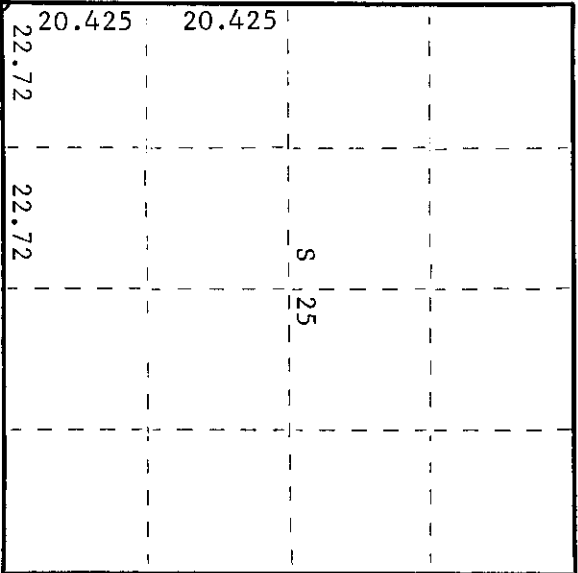
NBT - Sugar 18" S28°W 17 links, scribed SC BT.

S498
T37N R11E

Maine's 2½" iron pipe with brass cap removed because of error in stamping on brass cap. Post not set very solid.

S26 | S25
S35 | S36

CPT-1975



○ = Corner monument restored.

Dated at Rhineland, Wis., this 12th day of June, 1975

Signature Phillip T. Hansen Title Registered Land Surveyor Registration No. S-498
County Surveyor, Registered Land Surveyor, or other duly authorized official

Office of Register of Deeds, County of Oneida I hereby certify that the within instrument was filed in this office for record on the 1st day of October, 1975 at 3:00 o'clock P. M.

Doris Vernege Tuelke
(Register of Deeds)

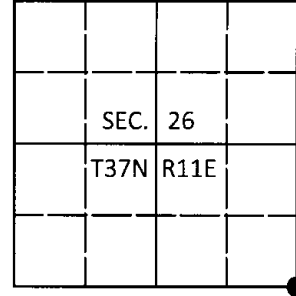
By Doris Vernege Tuelke Deputy

U.S. PUBLIC LAND SURVEY MONUMENT RECORD

Note: This form is intended and designed to fulfill all requirements of Wisconsin Administrative Code, Chapter A-E 7.08 U.S. Public Land Survey Monument Record (3)(a-i).

(a) CORNER LOCATION
 Cor. of Secs. 25, 26, 35 & 36
 Township 37 North
 Range 11 East of the 4th P.M.
 Town of Piehl
 County of Oneida

WISCRS - Oneida County
 N: 169,636.55 USft
 E: 351,514.35 USft
 Datum: NAD 83(2011)
 GNSS Method: Real-Time Network - Offset
 GNSS Control: WISCORS VRS



(b) HISTORY OF ORIGINAL CORNER ESTABLISHMENT

Original Surveyor: _____ Original Accessories: _____
 Date of Survey Commenced: _____ Completed: _____

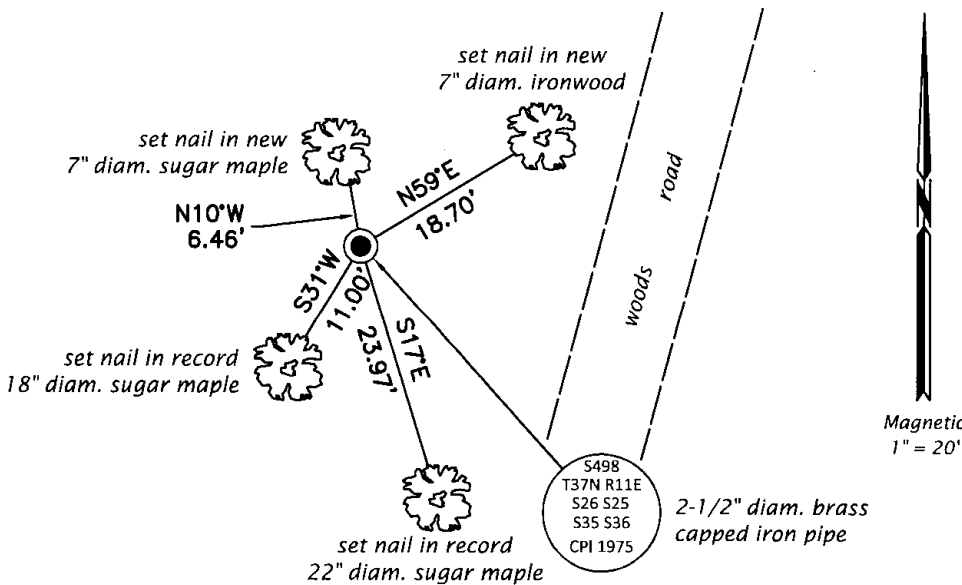
(b)(f)(g)(h) Description of monument found at this corner and if it was accepted, state all evidence (material, testimonial, occupational, plats, records, other monuments) used as a basis for accepting. If not accepted or if nothing was found, state evidence used as basis for establishing location. If re-established through lost corner proportionate methods, indicate all monuments, distances and directions used to establish. Indicate type of monument and sign post found or set.

This is a perpetuation of a previous USPLS Monument Record by Philip T. Hansen, RLS dated June 12, 1975 and filed in the office of the Oneida County Register of Deeds. A complete history of the corner can be found on the previous monument record. I accept the previous location as a true and faithful perpetuation or reestablishment of the original corner location and further perpetuate it as follows.

September 4, 2016: I found and accepted the record monument, a 2-1/2" diam. iron pipe with a 2-1/2" diam. brass cap projecting 18" above the ground surface. I found or established accessories as shown below and set a white vinyl sign post bearing West, 0.7 ft. dist.

The coordinate value shown has been verified by at least one of the following methods: 1) comparison to a previously GPS determined published value; 2) the value is the average of two or more GPS observations at a markedly different time; 3) one or more distances were measured back to the GPS observed corner from temporary GPS observed offset locations.

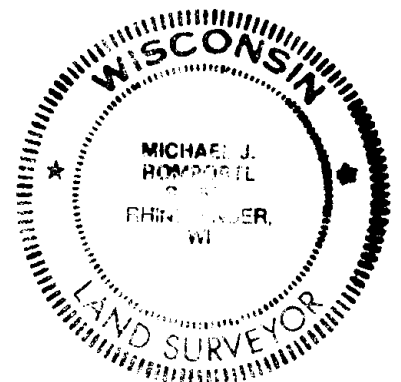
(c)(d)(e) Plan view of corner with ties to at least 4 witness monuments. If in disagreement with previously established corner, show the distances between the two corners and also indicate the ties to the disputed.



REGISTER OF DEEDS OFFICE
 ONEIDA COUNTY
 FILED

DEC 28 2016

AT _____ O'CLOCK _____ M
 KYLE J. FRANSON
 REGISTER OF DEEDS



(i) I, Michael J. Romportl, Professional Land Surveyor No. S-1624, hereby certify that the corner location on this record was determined by me or under my direction and control and that this U.S. Public Land Survey Monument Record is correct and complete to the best of my knowledge and belief.

Michael J Romportl 12/23/2016
 Signature Date